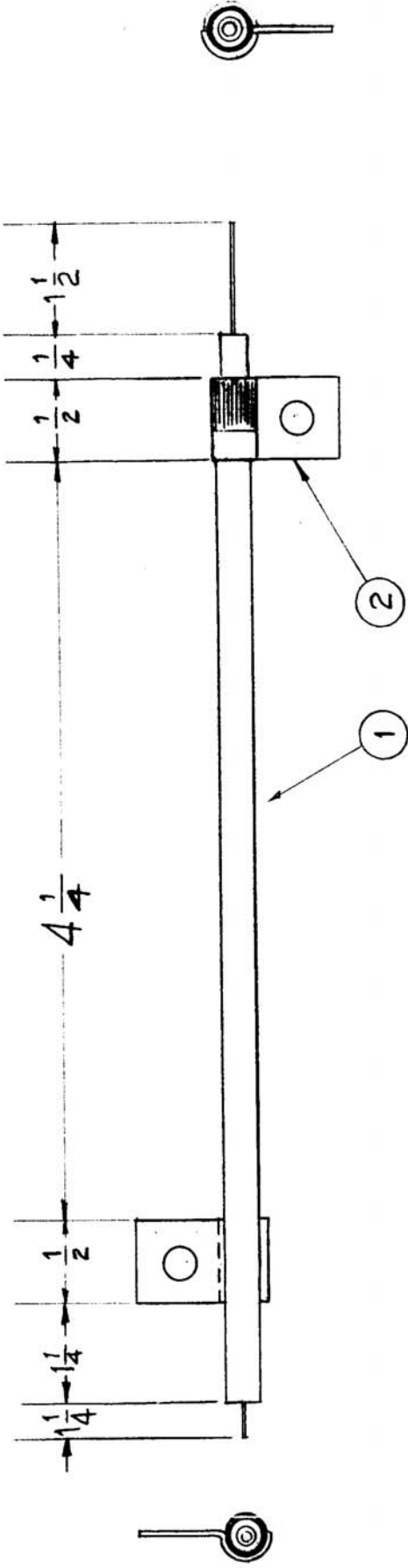


CA-352 C

REQ. UNIT	MODEL	USED ON ASSY. NO.	DATE
1	GPR-90RX		8-29-57
1	GPR-90RXD		8-20-63



INSTRUCTIONS FOR CABLE ASSEMBLY

1. Comb braid out, lay cable clamp over braid, fold braid over clamp & solder to clamp.
2. Remove excess braid.
3. Strip inner insulation, being extremely careful so as not to cut or pull out center conductor.

REQ. ITEM	PART NO.	DESCRIPTION	SYMBOL
X 3	BS-100	SOLDER, SOFT	
2	CU-104-2	CLAMP, CABLE	
1	RG-114-A/U	CABLE, COAX	

THE TECHNICAL MATERIEL CORP. MAMARONECK, NEW YORK	
CABLE, OSC. INPUT	
DATE	8-29-57
DRAWN	[Signature]
CHECKED	[Signature]
ELEC. DES. APP. MECH. DES. APP.	
FINISH & SPEC. NO.	
FINAL APPROVAL	
CA-352 C	

ISSUE ITEM	CHANGED FROM	DATE	CH. NO.	DRAFTS	CHECKER	ENG. APP.
C	IT 1 WAS 1	10-18-66	17039	WNO	[Signature]	[Signature]
B 1	PICTORIAL MOD, MODEL # GPR-90RX D ADDED	8-19-63	9814	AK	[Signature]	[Signature]
A 1	3/4 WAS 1/2; 1 1/4 WAS 1/4	11-19-59	1561	DM	[Signature]	[Signature]
SCALE:		TOLERANCES				
MAXIMUM ALLOWABLE TOLERANCES HAVE BEEN DETERMINED AND ANY DEVIATIONS WILL BE CAUSE FOR REJECTION. REMOVE ALL BURRS AND SHARP EDGES						
DEC. DIM. ±						
FRAC. DIM. ±						
ANGULAR DIM. ±						