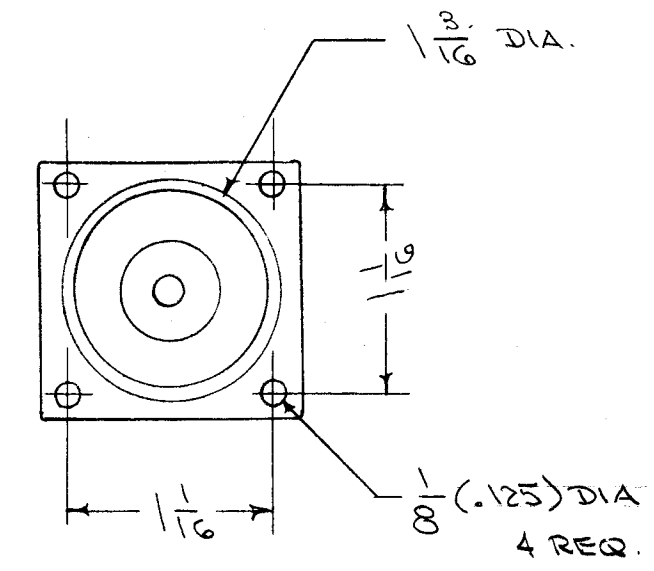
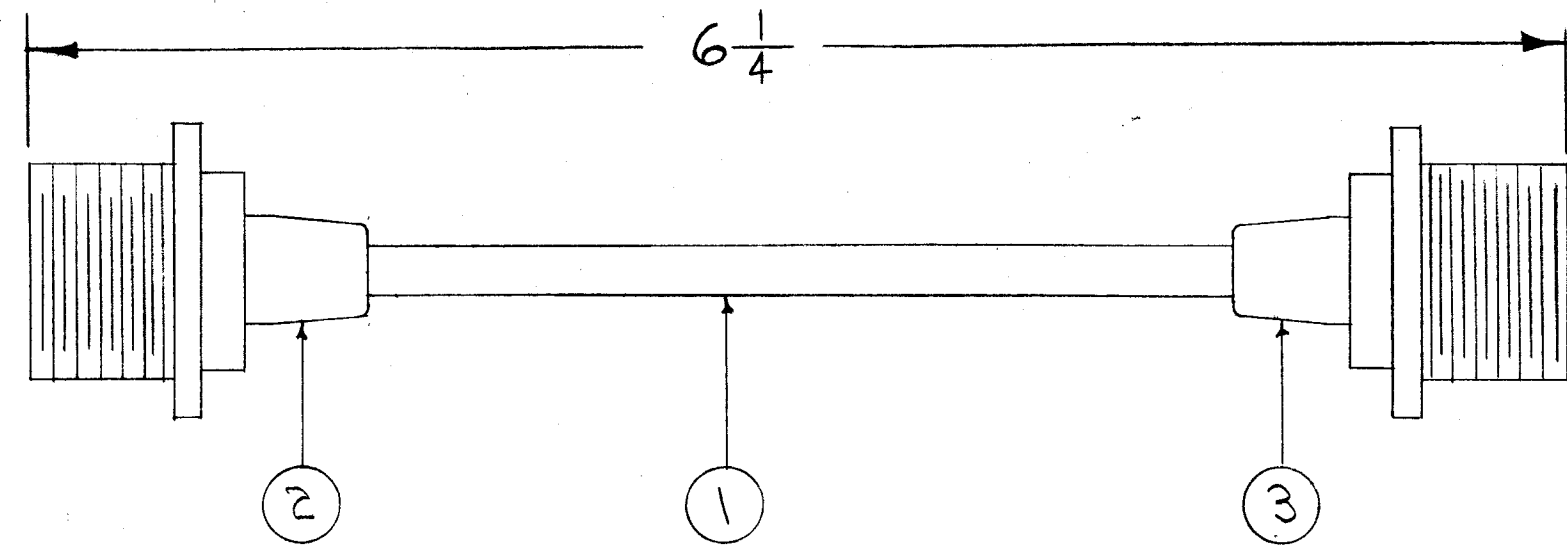
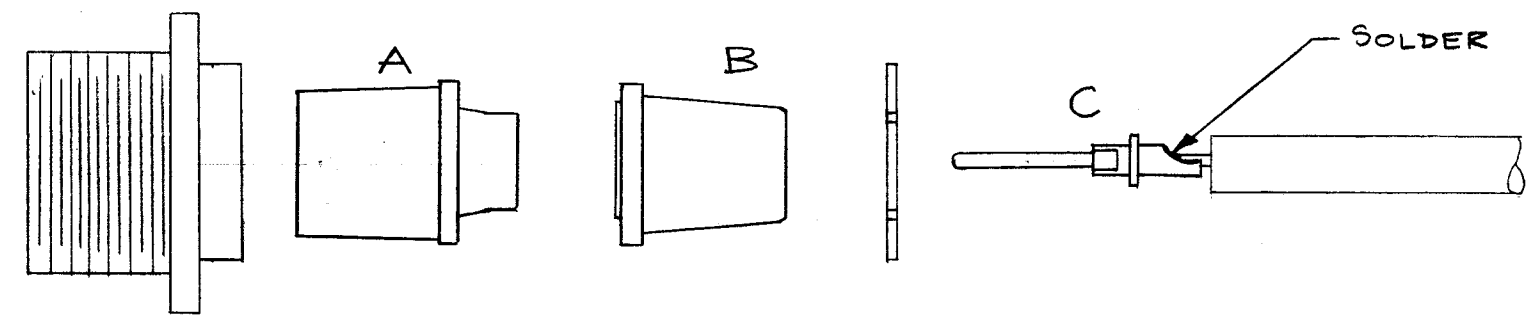


CA-295 D



DRILLING PLAN



WIRING DETAIL

NOTE THAT AFTER PIN C HAS BEEN INSERTED IN SECTIONS A & B IT MUST BE TURNED TO LOCK IT INTO SECTION A.

NOTICE TO PERSONS RECEIVING THIS DRAWING

THE TECHNICAL MATERIEL CORPORATION claims proprietary right in the material disclosed hereon. This drawing is issued in confidence for engineering information only and may not be reproduced or used to manufacture anything shown hereon without permission from THE TECHNICAL MATERIEL CORPORATION to the user. This drawing is loaned for mutual assistance and is subject to recall at any time.

Property of:
THE TECHNICAL MATERIEL CORPORATION
MAMARONECK, NEW YORK

D	2	O/A DIM 6/4 ADDED	2-7-61	4101	M.I.F.	JCH	SM
	1	DIM 4 1/2 DELETED					
C	1	ITEMS 2 & 3 WERE "AN" Designations	12/12/58	3	KG		
B	1	PICTORIAL CORRECTED	1/27/56	2	KG		
A	1	ITEM 1 WAS WI-126-1	9/27/56	1	EGD		
ISSUE	ITEM	CHANGED FROM	DATE	CH. NO.	DRAFTS	CHECKER	ENG. APP.

TOLERANCES		SCALE:	1	CAB-7	W509	12-12-58
DEC. DIM. ±	FRAC. DIM. ±	MAXIMUM ALLOWABLE TOLERANCES HAVE BEEN DETERMINED AND ANY DEVIATIONS WILL BE CAUSE FOR REJECTION.	1	CAB/FRAME		4-17-56
ANGULAR DIM. ±		REMOVE ALL BURRS AND SHARP EDGES	REQ. PER UNIT	MODEL	PROJECT NO.	DATE

REQ. PER UNIT	MODEL	PROJECT NO.	CABLE SYMBOL NUMBER	DATE
USED ON				

X	4	BS-100	SOLDER, SOFT	
1	3	MS-3102A-18-16S	CONNECTOR	J504
1	2	MS-3102A-18-16P	"	J503
5"	1	WI-131	WIRE	
REQ. ITEM	PART NO.		DESCRIPTION	SYMBOL
THE TECHNICAL MATERIEL CORP. MAMARONECK, NEW YORK				
STOCK SIZE				
CABLE ASSY., HIGH				
MATERIAL				
VOLTAGE BY PASS. GPT-150				
TYPE & TEMPER		HEAT TREAT. SPEC.	DRAWN	CHECKED
FINISH & SPEC. NO.		ELEC. DES. APP.	MECH. DES. APP.	
				CA-295 D