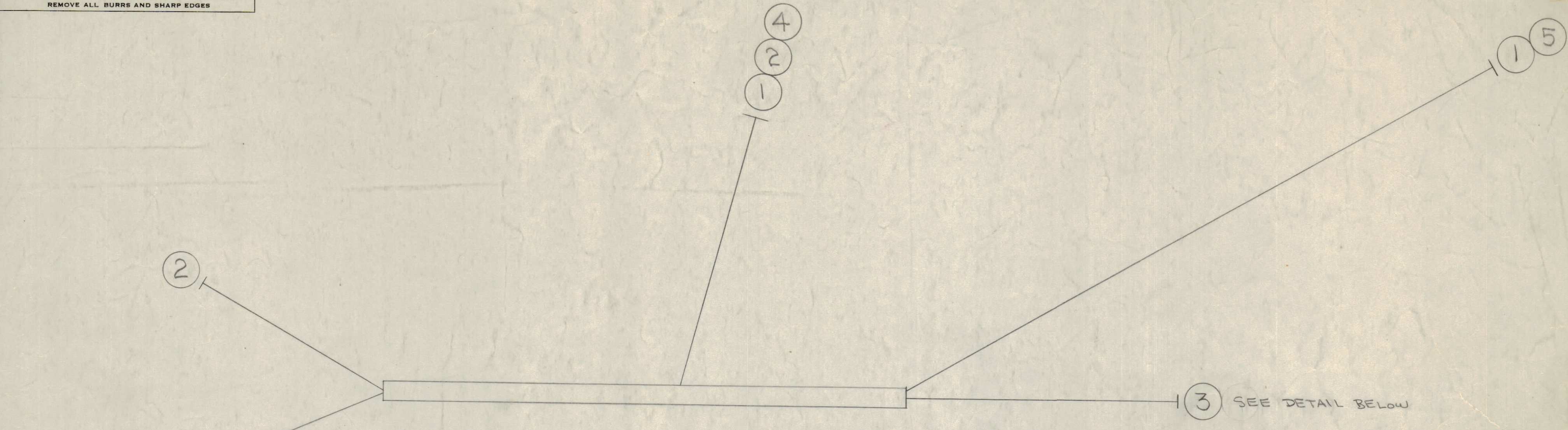


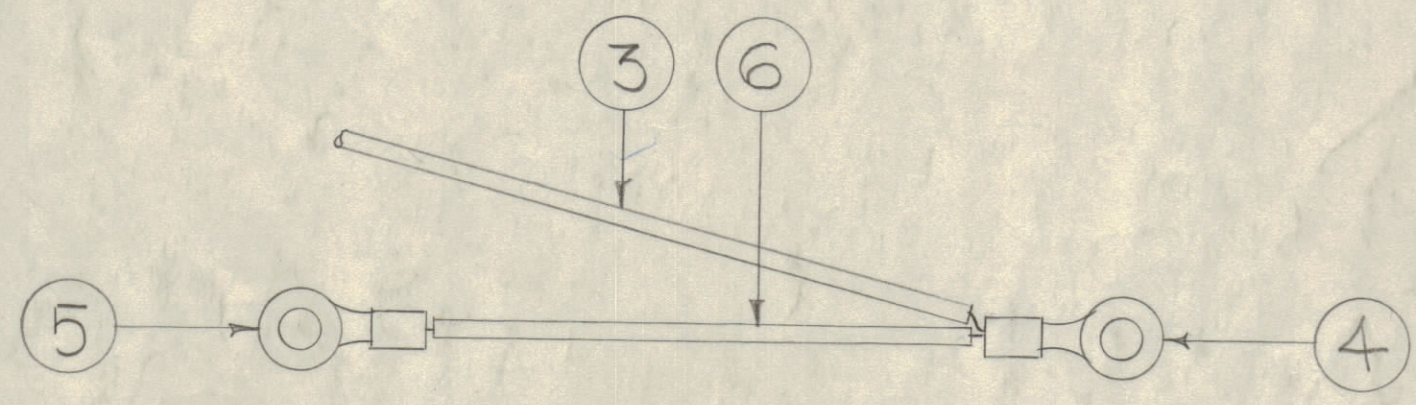
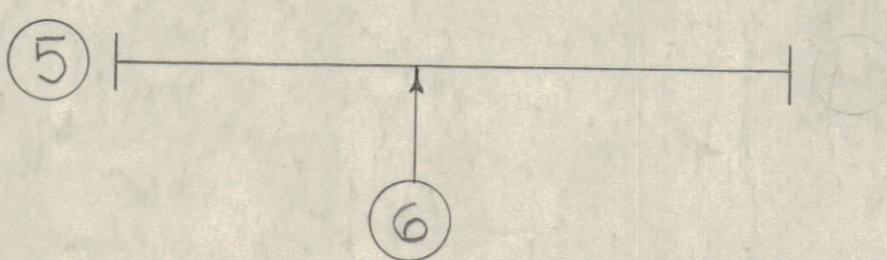
IF IT IS FOUND DESIRABLE TO CHANGE ANY TOLERANCE OR OTHER DETAIL SPECIFIED ON THIS DRAWING NOTIFY THE PURCHASER PROMPTLY.

MAXIMUM ALLOWABLE TOLERANCES HAVE BEEN DETERMINED AND DEVIATIONS WILL BE CAUSE FOR REJECTION. REMOVE ALL BURRS AND SHARP EDGES



CA-284 C

WIRE LENGTHS SHOWN ARE TOTAL LENGTHS AND ALLOW 3/4" EACH END FOR STRIPPING.



WIRING DETAIL WIRES 3 & 6

NOTICE TO PERSONS RECEIVING THIS DRAWING

THE TECHNICAL MATERIEL CORPORATION claims proprietary right in the material disclosed hereon. This drawing is issued in confidence for engineering information only and may not be reproduced or used to manufacture anything shown hereon without permission from THE TECHNICAL MATERIEL CORPORATION to the user. This drawing is loaned for mutual assistance and is subject to recall at any time.

Property of:
THE TECHNICAL MATERIEL CORPORATION
MAMARONECK, NEW YORK

REQ. ITEM	PART NO.	DESCRIPTION	SYMBOL
X 8	BS-100	SOLDER, SOFT	
X 7	CD-101-3-MW	LACING CORD	
A 6	MWC14(19)J90	CABLE, INSULATED wH/BLK.	
2 5	TE-159-34161	LUG	
2 4	TE-155-34170	"	
1 3	MWC14(19)J90	CABLE, INSULATED wH/BLK.	
1 2 1/2	MWC14(19)J9	" " WHITE	
1 1 1/2	MWC14(19)J9	" " "	

THE TECHNICAL MATERIEL CORP.			
MAMARONECK, NEW YORK			
CABLE ASSY., FILAMENT			
STOCK SIZE		RTM.	
MATERIAL	WEIGHT PER PC.	CDD 3/16/56	
TYPE & TEMPER		DRAWN	MECH. DES. APP.
HEAT TREAT. SPEC.		ELEC. DES. APP.	FINAL APPROVAL
FINISH & SPEC. NO.		CA-284 C	

ISSUE	ITEM	CHANGED FROM	DATE	CN. NO.	DRAFTS	CHECKER	ENG. APP.
C		IT 1,2,3 & 6 SUFFIX WAS 'C'	11/9/66	CC	RME		
B	4	#1, 2, 3, 4, 5, 6 CHANGED AS PER SPEC NO. S-363	10-21-58	Z	JC B.	JCB	
A	1	WIRE LENGTHS CHANGED	4/18/66	1	eds	JCB	edp

TOLERANCES		SCALE:	
ALL OTHERS	DEC. DIM. ± FRAC. DIM. ± ANGULAR DIM. ±	DRILL, PUNCH, COMMERCIAL STOCK SIZES AND MANUFACTURERS TOLERANCES ARE NOT INCLUDED.	

1	RTM-Z			10-16-58
1	RTM			3-16-56
REQ. PER UNIT	MODEL	PROJECT NO.	ASSY. NO.	DATE
USED ON				