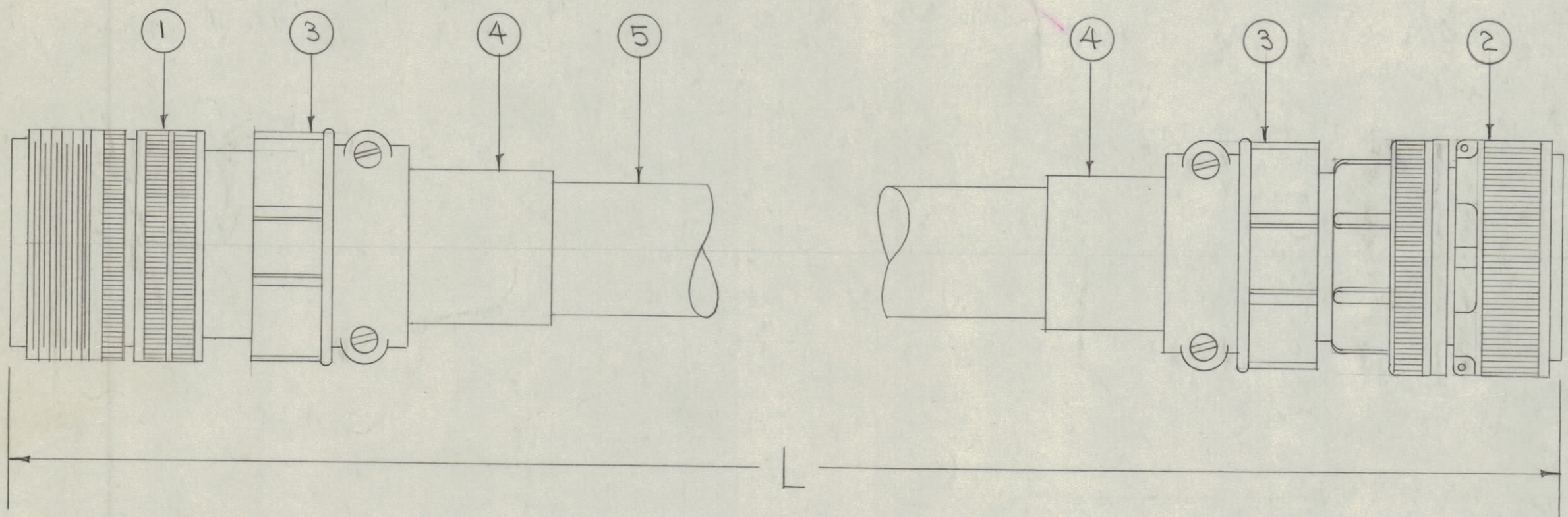
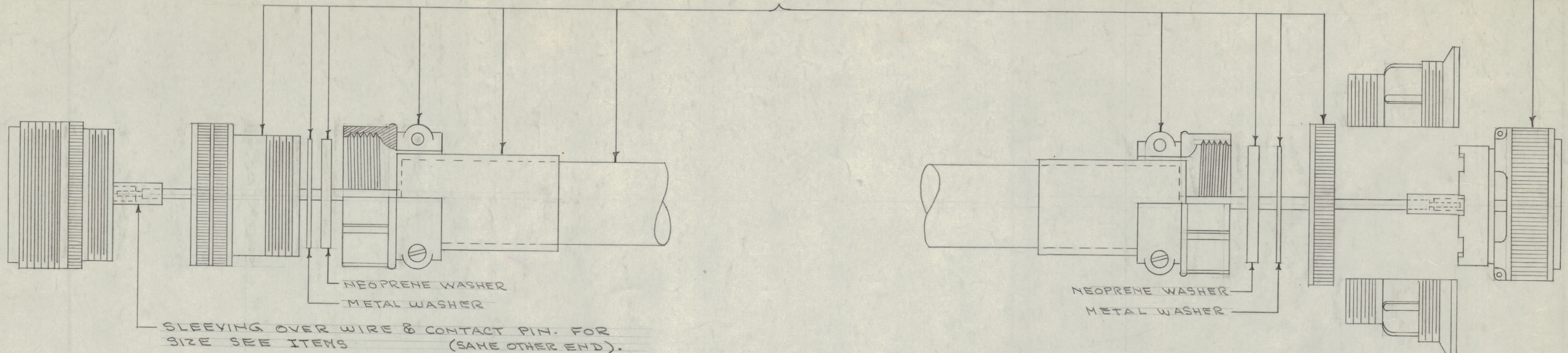


IF IT IS FOUND DESIRABLE TO CHANGE ANY TOLERANCE OR OTHER DETAIL SPECIFIED ON THIS DRAWING NOTIFY THE PURCHASER PROMPTLY.

MAXIMUM ALLOWABLE TOLERANCES HAVE BEEN DETERMINED AND DEVIATIONS WILL BE CAUSE FOR REJECTION. REMOVE ALL BURRS AND SHARP EDGES

NOTE THAT THESE PARTS MUST BE SLIPPED ONTO CABLE BEFORE CONNECTIONS ARE MADE TO CONTACT PINS

THIS RING MUST BE IN PLACE AS SHOWN BEFORE CONNECTIONS ARE MADE

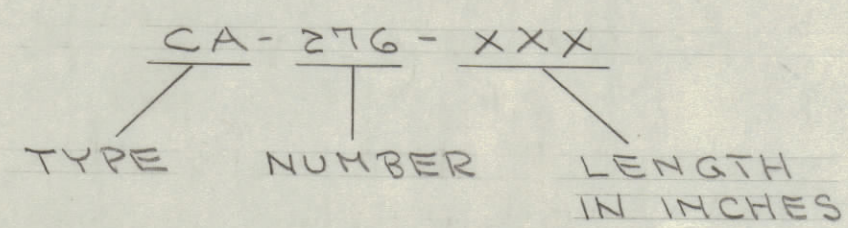


X	30	BS-100	SOLDER, SOFT	
X	29	PX-100-1-.148	INSULATION, SLEEVING	
X	28	PX-100-1-.106	INSULATION, SLEEVING	
X	X	27	SRIR 2 1/2 (9) 16088	CABLE, INSULATED GRAY
W	W	26	77	VIOLET
Y	Y	25	33	ORANGE
U	U	24	SRIR 3/5 (1) 220 95	WH/GRN
T	T	23	SRIR 2 1/2 (9) 16099	WHITE
S	S	22	22	RED

CA-276

R	R	21	SRIR 3/5 (1) 220 93	WH/OR.
P	P	20	SRIR 2 1/2 (9) 16044	YELLOW
N	N	19	SRIR 3/5 (1) 220 96	WH/BLU
M	M	18	SRIR 2 1/2 (9) 16000	BLACK
L	L	17	SRIR 6 (15) 12000	WIRE, TYPE WL BLACK
K	K	16	SRIR 2 1/2 (9) 16055	CABLE, INSULATED GREEN
J	J	15	11	BROWN
I	I	14	SRIR 3/5 (1) 220 44	YELLOW
H	H	13	77	VIOLET
G	G	12	SRIR 1 1/2 (1) 180 44	YELLOW
F	F	11	SRIR 3/5 (1) 220 33	ORANGE
E	E	10	55	GREEN
D	D	9	66	BLUE
C	C	8	SRIR 1 1/2 (1) 180 PINK	PINK
B	B	7	SRIR 3/5 (1) 220 22	RED
A	A	6	92	WH/RED
		5	PX-100-1-.625	INSULATION, SLEEVING
		2	4 AN 3420-16A	SLEEVING
		2	3 AN 3057-16	CLAMP, CABLE
		1	2 AN 3106B-28-11P	CONNECTOR
		1	1 AN 3101A-28-11S	CONNECTOR

TYPE DESIGNATION TO BE IN FOLLOWING FORM



TO CUSTOMERS SPECIFICATION

NOTICE TO PERSONS RECEIVING THIS DRAWING
 THE TECHNICAL MATERIEL CORPORATION claims proprietary right in the material disclosed hereon. This drawing is issued in confidence for engineering information only and may not be reproduced or used to manufacture anything shown hereon without permission from THE TECHNICAL MATERIEL CORPORATION to the user. This drawing is loaned for mutual assistance and is subject to recall at any time.

Property of:
 THE TECHNICAL MATERIEL CORPORATION
 MAMARONECK, NEW YORK

ISSUE	ITEM	CHANGED FROM	DATE	CN. NO.	DRAFTS	CHECKER	ENG. APP.
TOLERANCES		SCALE:					
ALL OTHERS	DEC. DIM. ± FRAC. DIM. ± ANGULAR DIM. ±	DRILL, PUNCH, COMMERCIAL STOCK SIZES AND MANUFACTURERS TOLERANCES ARE NOT INCLUDED.					

MODEL	GPT-750	PROJECT NO.		ASS'Y. NO.		DATE	1-12-55
USED ON							

FROM	TO	REQ.	ITEM	PART NO.	DESCRIPTION	SYMBOL
PINS						
THE TECHNICAL MATERIEL CORP. MAMARONECK, NEW YORK						
STOCK SIZE						
CABLE, EXTENSION						
MATERIAL						
WEIGHT PER PC.						
GPT-750						
TYPE & TEMPER						
COD 1/12/55						
DRAWN						
ELEC. DES. APP.						
MECH. DES. APP.						
HEAT TREAT. SPEC.						
CHECKED						
FINAL APPROVAL						
CA-276						
FINISH & SPEC. NO.						