

IF IT IS FOUND DESIRABLE TO CHANGE ANY TOLERANCE OR OTHER DETAIL SPECIFIED ON THIS DRAWING NOTIFY THE PURCHASER PROMPTLY.

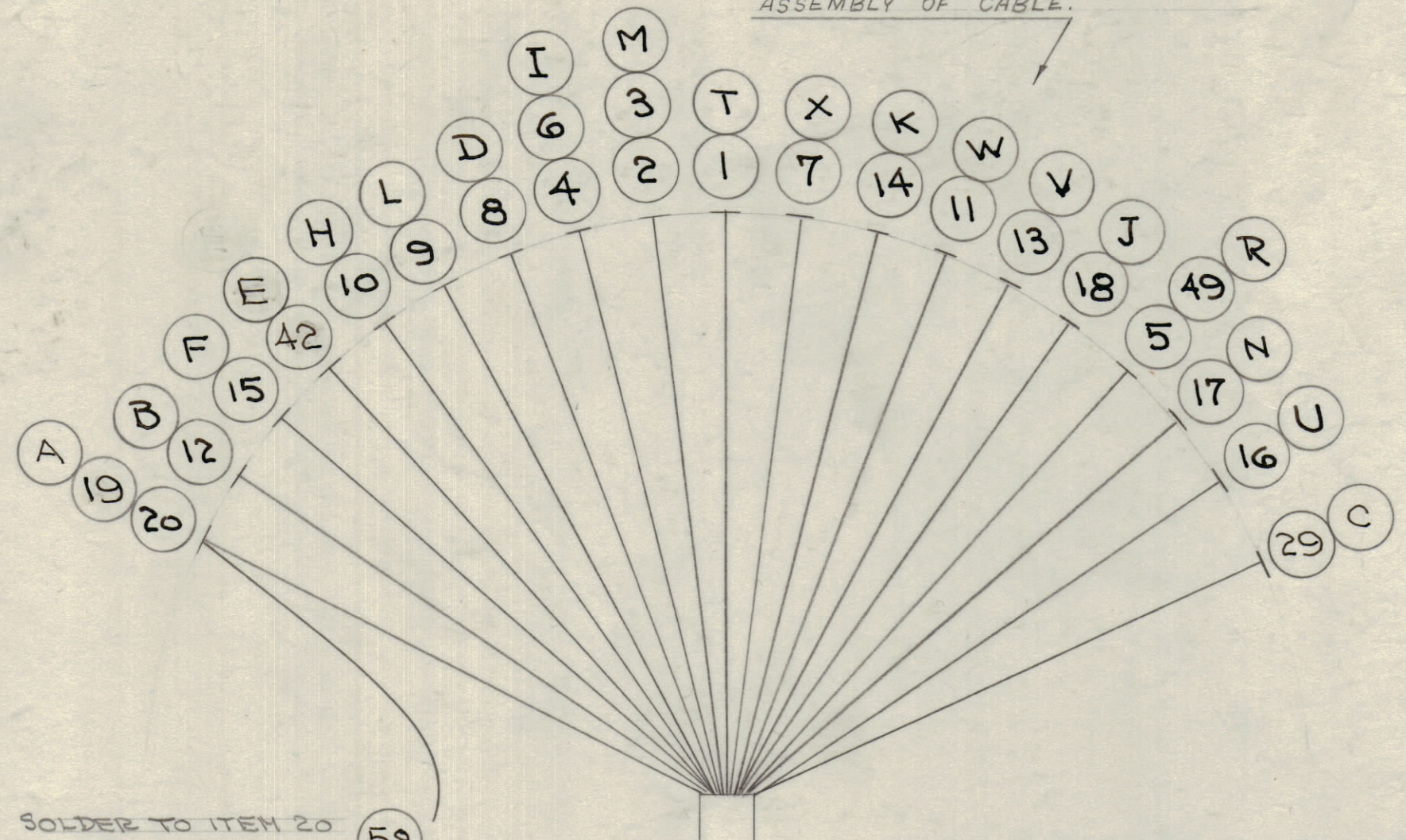
MAXIMUM ALLOWABLE TOLERANCES HAVE BEEN DETERMINED AND DEVIATIONS WILL BE CAUSE FOR REJECTION. REMOVE ALL BURRS AND SHARP EDGES.

NOTICE TO PERSONS RECEIVING THIS DRAWING

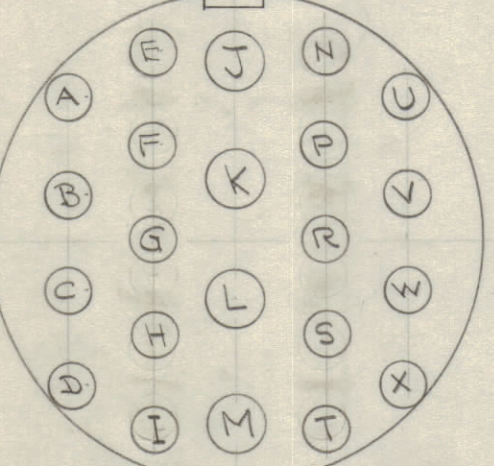
THE TECHNICAL MATERIEL CORPORATION claims proprietary right in the material disclosed herein. This drawing is issued in confidence of engineering information only and may not be reproduced or used to manufacture any item without permission from THE TECHNICAL MATERIEL CORPORATION to the user. This drawing is loaned for mutual assistance and is subject to recall at any time.

Property of:  
THE TECHNICAL MATERIEL CORPORATION  
MAMARONECK, NEW YORK

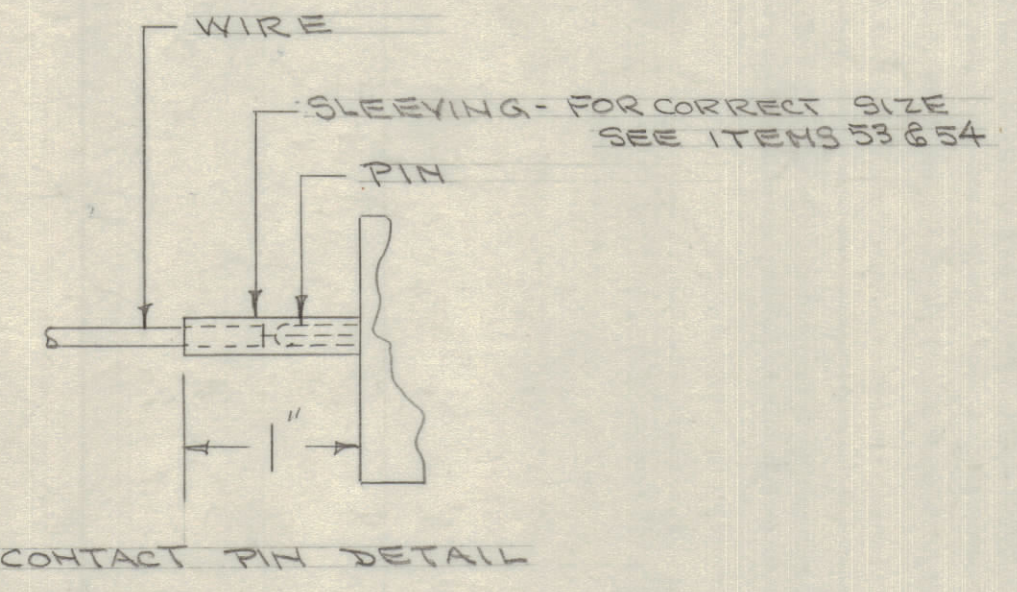
NOTE:  
ATTACH ITEM 56 TO LEADS SHOWN BELOW AFTER ASSEMBLY OF CABLE.



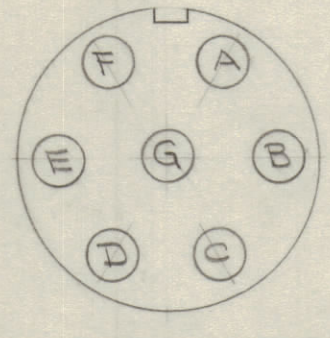
SOLDER TO ITEM 20 BEFORE CONNECTION TO PIN.



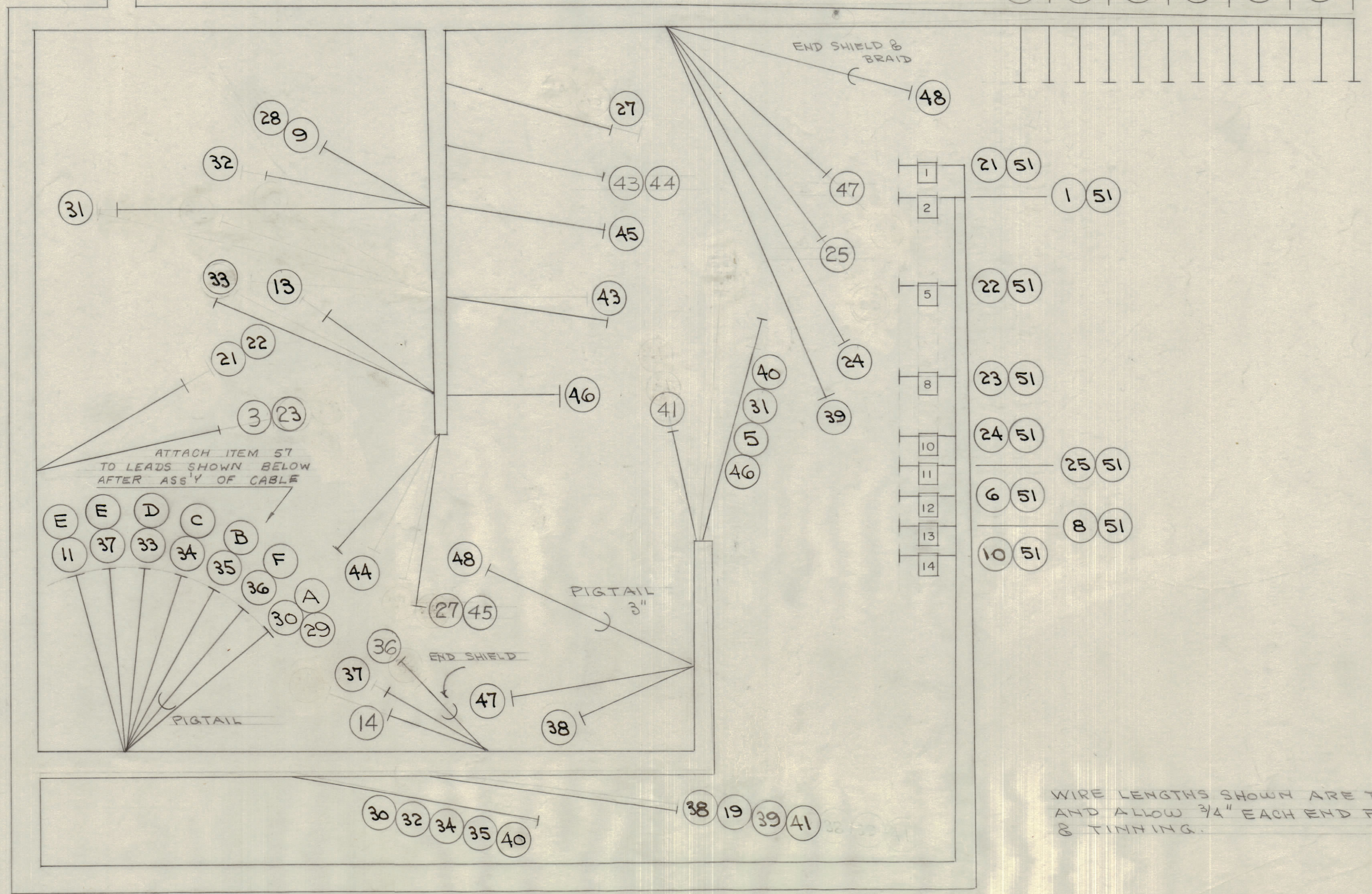
J405  
(ITEM 56)



CONTACT PIN DETAIL



J401  
(ITEM 57)



WIRE LENGTHS SHOWN ARE TOTAL LENGTHS AND ALLOW 3/4" EACH END FOR STRIPPING & TINNING.

BOTTOM OF CABLE

REQ.	ITEM	PART NO.	DESCRIPTION	SYMBOL
2 1/4	58	WL-100-Y	WIRE, BUSS BAR 22 GA.	
1	57	AN3102A-168-15	CONNECTOR	J401
1	56	AN3102A-28-1-P	CONNECTOR	J-405
X	55	BS-100	SOLDER, SOFT	
X	54	PX-100-1-1A8	INSULATION, SLEEVING	
X	53	PX-100-1-106	"	
9	52	LA-101	1, 2, 3, 8, 10, 11, 12, 13, 14	
21	51	TE-120-2	LUGS	
X	50	CD-101-34W	LACING CORD	
19 1/2	49	SRIR <sup>2</sup> (S <sup>1</sup> )22U95	CABLE, INSULATED	WHY GRN
34	48	WI-101-4	SHIELD FLEX.	
33 1/2	47	SRIR <sup>2</sup> (S <sup>1</sup> )22U77	INSULATED	VIO
35 3/4	46	95		WHY GRN
8 1/2	45	SRIR <sup>2</sup> (S <sup>1</sup> )22U90		WHY BLK
9 1/4	44	11		BRN
7 3/4	43	11		BRN
22	42	93		WHY OR
11 3/4	41	22		RED
15 3/4	40	60		BLUE
32 1/4	39	93		WHY OR
9 3/4	38	93		WHY OR
10	37	90		WHY BLK
9 1/2	36	WI-101-4	SHIELD FLEX.	WHITE
9	35	SRIR <sup>2</sup> (S <sup>1</sup> )22UPMK	INSULATED	PINK
9	34	22		RED
20 1/4	33	91		WHY BRN

20 1/2	32	SRIR <sup>2</sup> (S <sup>1</sup> )22U93	CABLE, INSULATED	WHY OR
35 1/2	31	92		WHY RED
14 1/4	30	60		BLUE
	29	60		BLUE
14	28	SRIR <sup>2</sup> (S <sup>1</sup> )18U00		BLK.
10 1/2	27	SRIR <sup>2</sup> (S <sup>1</sup> )22U90		WHY BLK
26			DELETED	
41 1/4	25	60	CABLE, INSULATED	BLUE
43	24	55		GRN.
28	23	SRIR <sup>2</sup> (S <sup>1</sup> )18U77		VIOLET
28 1/2	22	SRIR <sup>2</sup> (S <sup>1</sup> )22U92		WHY RED
30 3/4	21	95		WHY BRN
20 1/2	20	22		RED
24 1/2	19	22		RED
20 1/2	18	SRIR <sup>2</sup> (S <sup>1</sup> )18U11		BRN
19	17	SRIR <sup>2</sup> (S <sup>1</sup> )22U55		GRN.
18 3/4	16	77		VIO.
17 3/4	15	33		OR
24 1/4	14	11		BRN
16 1/2	13	91		WHY BRN
18 1/4	12	92		WHY RED
19 1/2	11	90		WHY BLK
34 3/4	10	96		WHY BLUE
13 3/4	9	SRIR <sup>2</sup> (S <sup>1</sup> )18U00		BLACK
34 1/2	8	SRIR <sup>2</sup> (S <sup>1</sup> )22U99		WHITE
21	7	SRIR <sup>2</sup> (S <sup>1</sup> )18U55		GRN
34 1/2	6	SRIR <sup>2</sup> (S <sup>1</sup> )22U44		YEL
29 1/2	5	95		WHY GRN
20 1/4	4	44		YEL
15 3/4	3	SRIR <sup>2</sup> (S <sup>1</sup> )18U77		VIO.
2 1/4	2	77		VIO.
39	1	22		RED.

REQ. ITEM	PART NO.	DESCRIPTION	SYMBOL
THE TECHNICAL MATERIEL CORP. MAMARONECK, NEW YORK			
STOCK SIZE			
CABLE ASSEMBLY			
MATERIAL	WEIGHT PER FC.	INTERCONNECT GPT-150	
TYPE & TEMPER			
DRAWN			
HEAT TREAT. SPEC.			
FINISH & SPEC. NO.			

C	2	ITEM 10 MOVED	1/16	3	END	ATT
	1	20 DELETED				
B	2	WIRE POSITIONS, COLORS AND LENGTHS CHANGED	3/16	2	END	ATT
	1	ITEM 55 ADDED				
	4	WIRE LENGTHS ADDED				
A	3	ITEMS 53, 54 WMS PX-104	3/4	1	B	ATT
	2	ITEM 48 WAS WI-101-2				
	1	ITEMS 29, 40 DELETED				

ISSUE	ITEM	CHANGED FROM	DATE	CN. NO.	DRAFTS	CHECKER	ENG. APP.
TOLERANCES							
SCALE:							
ALL DEC. DIM. ±				DRILL, PUNCH, COMMERCIAL STOCK			
OTHERS FRAC. DIM. ±				SIZES AND MANUFACTURERS			
ANGULAR DIM. ±				TOLERANCES ARE NOT INCLUDED.			

1	RTF			12-29-55
REQ PER UNIT	MODEL	PROJECT NO.	ASBY. NO.	DATE
USED ON				