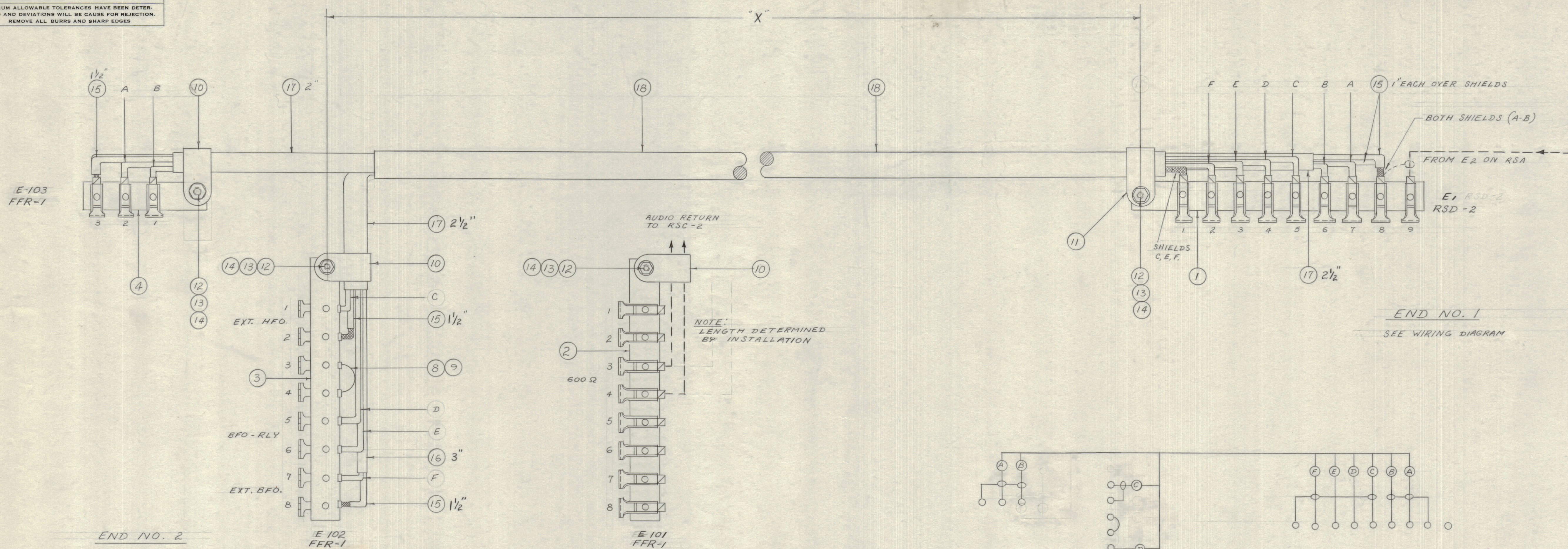


IF IT IS FOUND DESIRABLE TO CHANGE ANY TOLERANCE OR OTHER DETAIL SPECIFIED ON THIS DRAWING NOTIFY THE PURCHASER PROMPTLY.
 MAXIMUM ALLOWABLE TOLERANCES HAVE BEEN DETERMINED AND DEVIATIONS WILL BE CAUSE FOR REJECTION. REMOVE ALL BURRS AND SHARP EDGES

NOTICE TO PERSONS RECEIVING THIS DRAWING

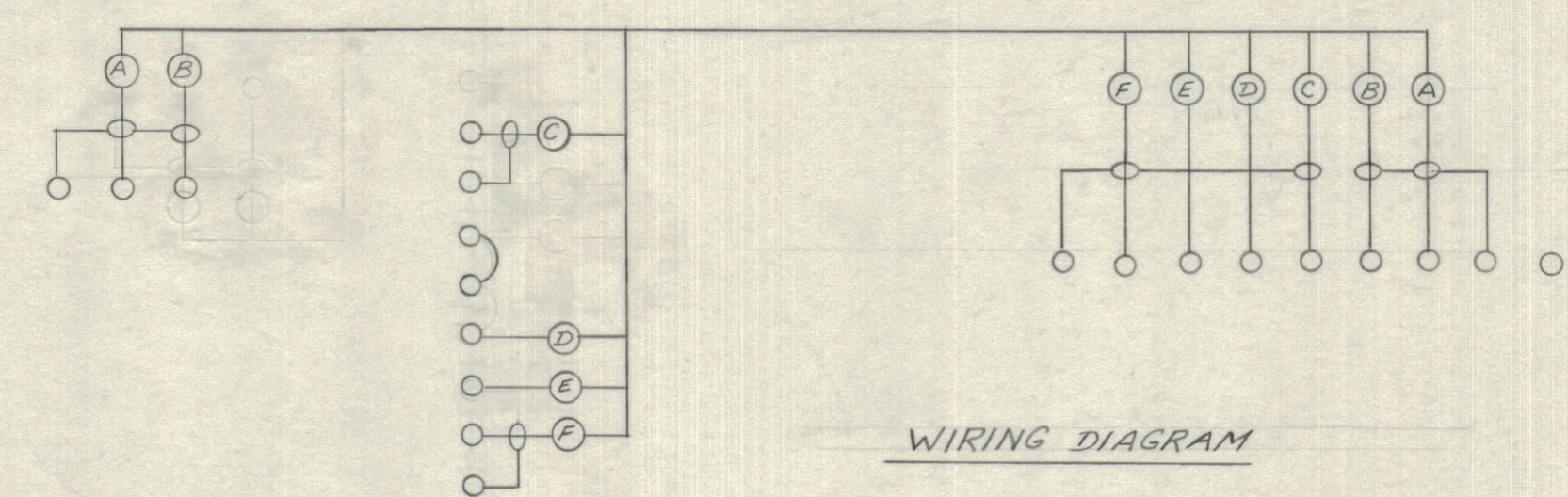
THE TECHNICAL MATERIEL CORPORATION claims proprietary right in the material disclosed hereon. This drawing is issued in confidence for engineering information only and may not be reproduced or used to manufacture anything shown hereon without permission from THE TECHNICAL MATERIEL CORPORATION to the user. This drawing is loaned for mutual assistance and is subject to recall at any time.

Property of:
 THE TECHNICAL MATERIEL CORPORATION
 MAMARONECK, NEW YORK



END NO. 1
 SEE WIRING DIAGRAM

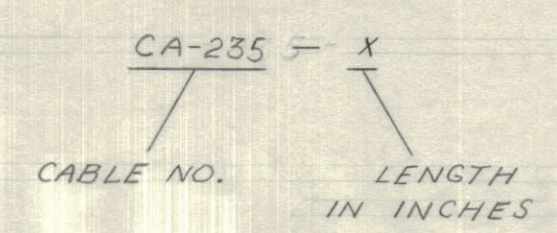
END NO. 2
 SEE WIRING DIAGRAM



WIRING DIAGRAM

PREPARATION OF WIRE ENDS			
WIRE ITEM	LENGTH	END NO. -1	END NO. -2
A	$X + 8\frac{1}{4}$	 BREAK OUT AS SHOWN. CUT $\frac{1}{2}$ " FROM CONDUCTOR. STRIP $\frac{1}{2}$ "	BREAK OUT 2" FROM END. CUT $\frac{1}{2}$ " FROM CONDUCTOR. STRIP $\frac{1}{2}$ "
B	$X + 7\frac{1}{2}$	BREAK OUT AS ABOVE. CUT 1" FROM CONDUCTOR. STRIP $\frac{1}{2}$ "	BREAK OUT 2" FROM END. CUT $\frac{3}{4}$ " FROM CONDUCTOR. STRIP $\frac{1}{2}$ "
C	$X + 6$	BREAK OUT $3\frac{1}{2}$ " FROM END. STRIP $\frac{1}{2}$ "	BREAK OUT 2" FROM END. STRIP $\frac{1}{2}$ "
F	$X + 7$	BREAK OUT $\frac{1}{2}$ " FROM END. STRIP $\frac{1}{2}$ "	BREAK OUT 1" FROM END. STRIP $\frac{1}{2}$ "
D	$X + 7$	STRIP $\frac{1}{2}$ "	STRIP $\frac{1}{2}$ "
E	$X + 6\frac{1}{2}$	STRIP $\frac{1}{2}$ "	STRIP $\frac{1}{2}$ "

CABLE DESIGNATION TO BE IN FOLLOWING FORM



NOTE:
 DIMENSION "X"
 DETERMINED BY
 INSTALLATION

REQ. ITEM	PART NO.	DESCRIPTION	SYMBOL
X 18	FX-100-1-.330	INSULATION SLEEVING	
7 1/2 17	" " " .208	" " "	
2 16	" " " .118	" " "	
5 15	FX-100-1 .330	INSULATION SLEEVING	
4 14	NTH06328CB	NUT, HEXAGON	
4 13	LWEO6MRC	WASHER, LOCK EXT.	
4 12	SCBS06328CT	SCREW MACHINE	
1 11	CU-102-4	CLAMP, "G" TYPE	
3 10	CU-102-3	CLAMP, "G" TYPE	
X 9	BS-100	SOLDER, SOFT	
X 8	WL-100-8	WIRE, BUSS BAR (24 GA.)	
X 7	SRIR3/3(7)2R22	CABLE INSULATED, (RED)	
X 6	SRIR3/3(7)2R29	CABLE INSULATED, (RED & WHITE)	
X 5	WI-101-4	CABLE SHIELDED	
1 4	TM-105-3AR	STRIP FANNING	
1 3	TM-105-BAR	STRIP FANNING	
1 2	TM-105-8AL	STRIP FANNING	
1 1	TM-105-9AL	STRIP FANNING	
REQ. ITEM	PART NO.	DESCRIPTION	SYMBOL
THE TECHNICAL MATERIEL CORP. MAMARONECK, NEW YORK			
CABLE, INTERCONNECT (RSD-FFR) RCR SYSTEM			
MATERIAL WEIGHT PER FC.			
TYPE & TEMPER			
DRAWN ELEC. DES. APP. MECH. DES. APP.			
HEAT TREAT. SPEC.			
CHECKED FINAL APPROVAL			
SUPERSEDES CA-197-2			
FINISH & SPEC. NO. CA-235			

ISSUE	ITEM	CHANGED FROM	DATE	CN. NO.	DRAFTS	CHECKER	ENG. APP.
TOLERANCES							
SCALE:							
DRILL, PUNCH, COMMERCIAL STOCK SIZES AND MANUFACTURERS TOLERANCES ARE NOT INCLUDED.							

REQ. PER UNIT	MODEL	PROJECT NO.	ASSY. NO.	DATE
USED ON				

CA-235