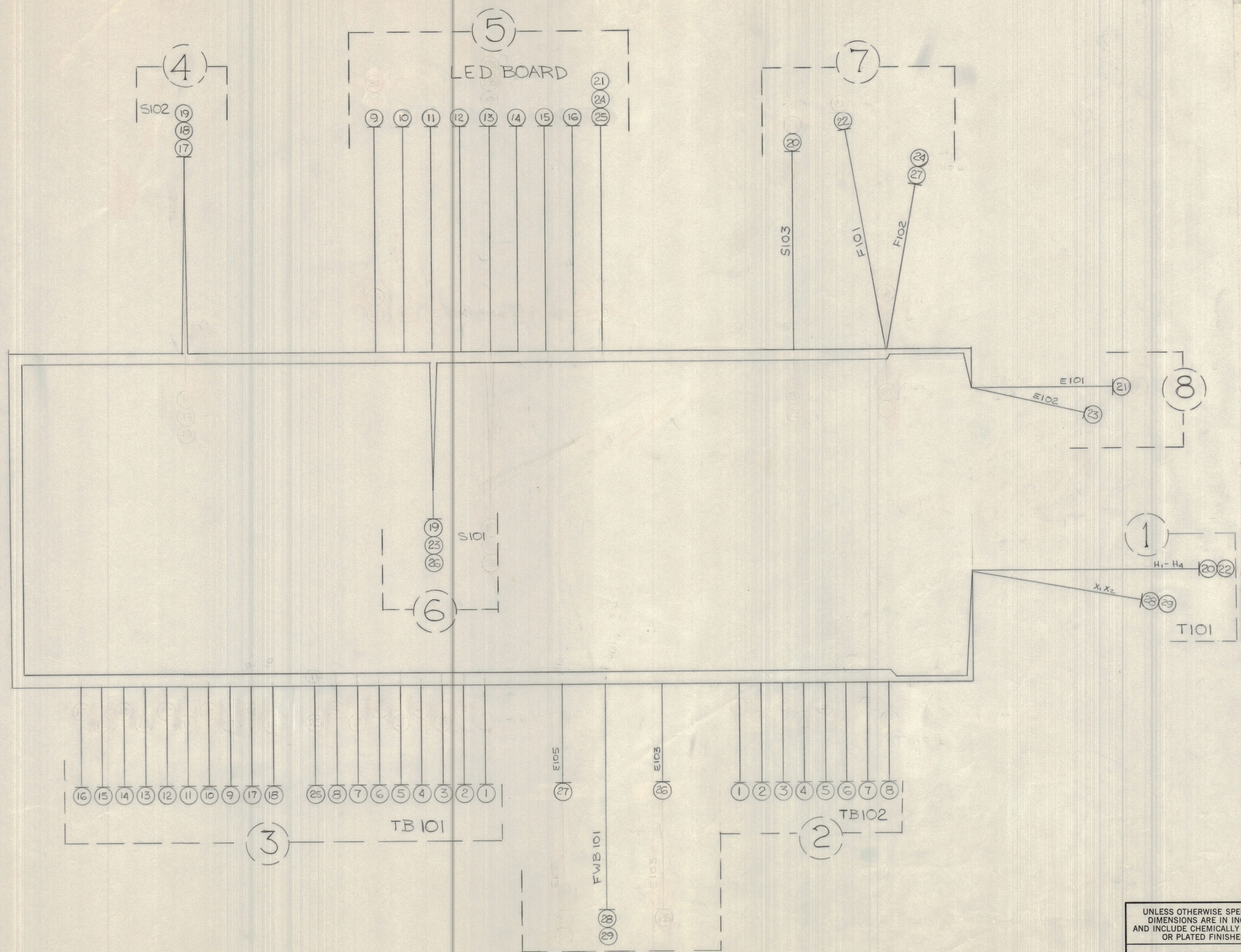


REVISIONS							
E.M.N.O	DRAFT	CHKD	ZONE	LTR	DESCRIPTION	DATE	APPROVED
	PH			X ₁	WIRES IN BREAKOUT #5 CHANGED	11-14-77	
	PH			X ₂	TERMINATION OF ITEMS 21, 24, 25 CHANGED	11-15-77	
	PH			φ	ORIGINAL RELEASE FOR PRODUCTION	1-17-78	



QTY. REQ.	ITEM	PART NO.	DESCRIPTION	SYMBOL
LIST OF MATERIAL				
THE TECHNICAL MATERIEL CORP. MAMARONECK, NEW YORK				
CABLE, INTERFACE				
FINAL APPROVAL		DATE		
MECH. DES.		DATE		
ELECT. DES.		DATE		
CHECKED		DATE		
DRAWN		DATE		
SIZE	CODE	IDENT NO.	DWG NO.	ISSUE
D	82679	CA1836		φ
SCALE			SHEET	OF

1	ATU1K-B	AX5226
QTY / UNIT	MODEL USED ON	ASS'Y NO.
APPLICATION		
CODE		
NOTICE TO PERSONS RECEIVING THIS DRAWING		
<small>THE TECHNICAL MATERIEL CORPORATION claims proprietary right in the material disclosed hereon. This drawing is issued in confidence for engineering information only and may not be reproduced or used to manufacture anything shown hereon without permission from THE TECHNICAL MATERIEL CORPORATION to the user. This drawing is loaned for mutual assistance and is subject to recall at any time.</small>		

UNLESS OTHERWISE SPECIFIED DIMENSIONS ARE IN INCHES AND INCLUDE CHEMICALLY APPLIED OR PLATED FINISHES	
TOLERANCES ON	
DECIMALS	FRACTIONS
.X ± .05	± 1/64
.XX ± .01	ANGLES
.XXX ± .005	± 0° - 30'
MATERIAL	
FINISH	

ITEM	PART NUMBER	BREAKOUT		DESTINATION OR DESCRIPTION	
		FROM	TO	FROM	TO
1	LWC(7)24 - 1	2	3	P1 TB102	P20 TB101
2	-3	2	3	P2 TB102	P19 TB101
3	-4	2	3	P3 TB102	P18 TB101
4	-5	2	3	P4 TB102	P17 TB101
5	-6	2	3	P5 TB102	P16 TB101
6	-7	2	3	P6 TB102	P15 TB101
7	-8	2	3	P7 TB102	P14 TB101
8	-9	2	3	P8 TB102	P13 TB101
9	-90	5	3	P9 LED BOARD	P8
10	-91	5	3	P8	P7
11	-92	5	3	P7	P6
12	-93	5	3	P6	P5
13	-94	5	3	P5	P4
14	-95	5	3	P4	P3
15	-96	5	3	P3	P2
16	-97	5	3	P2	P1
17	-96	4	3	"REMOTE" S102	P9
18	-97	4	3	COMMON S102	P10 TB101
19	-98	4	6	"LOCAL" S102	N.O. S101
20	-0	7	1	P10 S103	H1 & H3 T101
21	-2	5	8	E107 LED BOARD	E101
22	-1	7	1	CTR F101	H2 & H4 T101
23	-1	6	8	NC S101	E102
24	LWC(7)24 - 2	5	7	E107 LED BOARD	CASE F102

