

REVISIONS

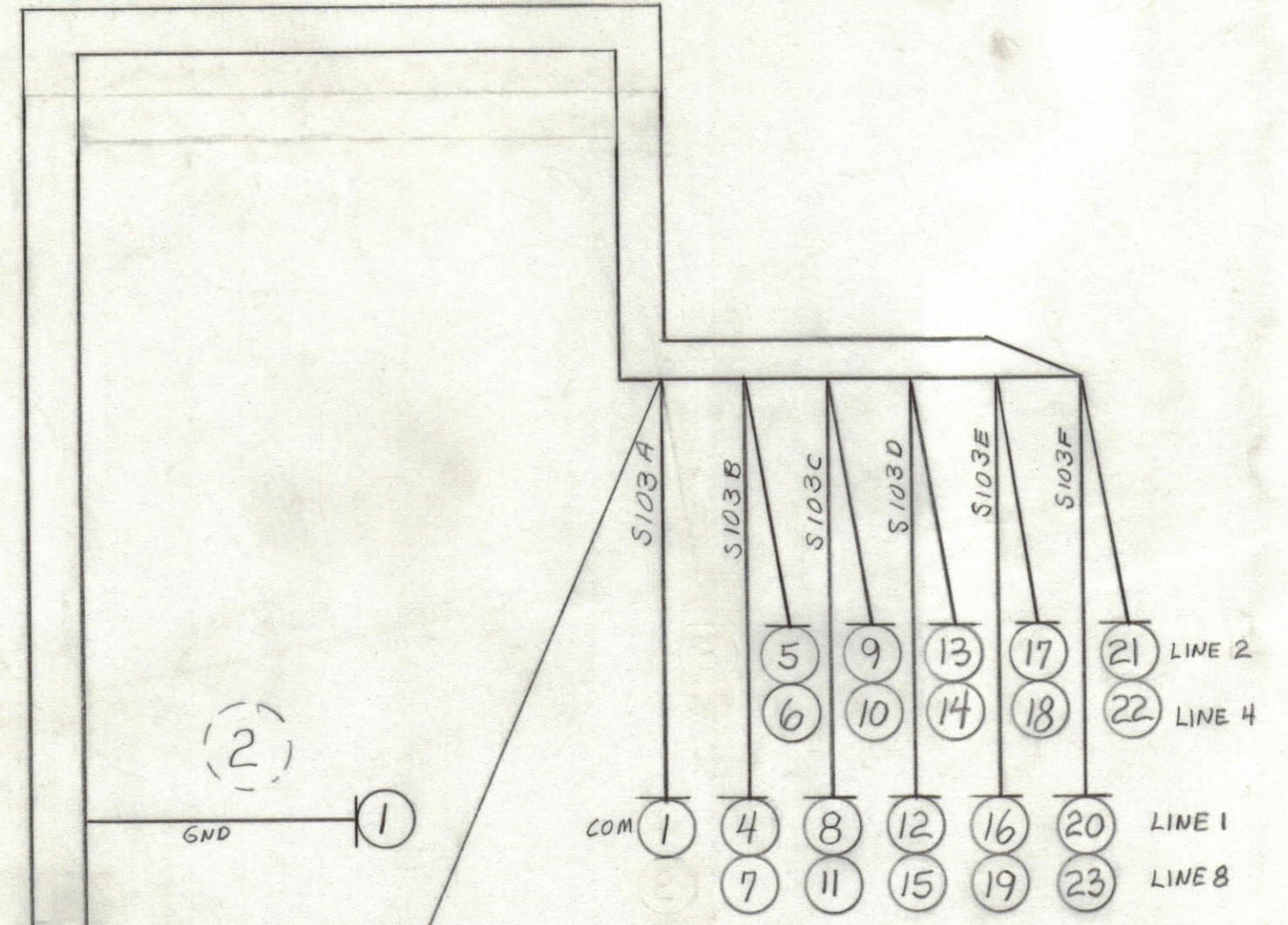
ZONE	LTR	DESCRIPTION	DATE	E.M.N.NO.	DRAFT	CHKD	APPD
		ORIGINAL RELEASE FOR PRODUCTION	1/2/73				

CA 1734-A

CABLE, SWITCH RSO-1

SHEET OF 3 of

REQ	ITEM	PART NUMBER	BREAKOUT		DESTINATION OR DESCRIPTION	
			FROM	TO	FROM	TO
	1	MWC26(7)U0	1	2	S103A COMMON	GND.
	2	↑ 1	1	3	Z110E1	Z104 E29
	3	2	1	3	Z110E2	Z104 E30
	4	1	1	3	S103B LINE 1	Z104 E31
	5	2	1	3	S103B LINE 2	Z104 E32
	6	3	1	3	S103B LINE 4	Z104 E33
	7	4	1	3	S103B LINE 8	Z104 E34
	8	1	1	4	S103C LINE 1	Z104 E 7
	9	2	1	4	S103C LINE 2	Z104 E 8
	10	3	1	4	S103C LINE 4	Z104 E 9
	11	4	1	4	S103C LINE 8	Z104 E 10
	12	1	1	4	S103D LINE 1	Z104 E 11
	13	2	1	4	S103D LINE 2	Z104 E 12
	14	3	1	4	S103D LINE 4	Z104 E 13
	15	4	1	4	S103D LINE 8	Z104 E 14
	16	1	1	4	S103E LINE 1	Z104 E 15
	17	2	1	4	S103E LINE 2	Z104 E 16
	18	3	1	4	S103E LINE 4	Z104 E 17
	19	4	1	4	S103E LINE 8	Z104 E 18
	20	1	1	4	S103F LINE 1	Z104 E 19
	21	2	1	4	S103F LINE 2	Z104 E 20
	22	3	1	4	S103F LINE 4	Z104 E 21
	23	MWC26(7)U4	1	4	S103F LINE 8	Z104 E 22
	24	BS100			SOLDER TIN ALLOY	
	25	CD101-1MW			CORD, NYLON LACING	



D

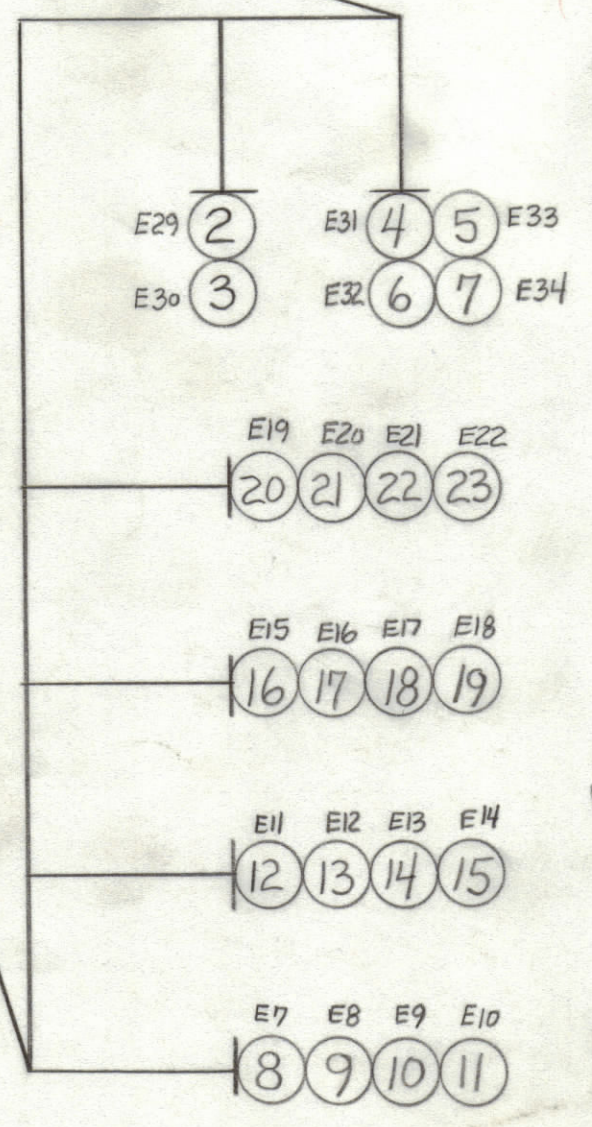
C

B

A

UNLESS OTHERWISE SPECIFIED
WIRES SHOULD BE PLACED IN CABLE IN NUMERICAL SEQUENCE
AS THEY APPEAR IN ITEM COLUMN
SPACE LACING APPROXIMATELY 3/4" APART.

THIS SYMBOL DENOTES END OF INSULATION
AND NAIL DRIVING POINT. WIRE MUST BE
STRIPPED 3/4" BEYOND THIS POINT AND
TINNED 1/2" UNLESS OTHERWISE SPECIFIED



(4)

QTY / UNIT	RSU-1	MODEL USED ON	ASS'Y NO.
APPLICATION			
CODE			

NOTICE TO PERSONS RECEIVING THIS DRAWING
THE TECHNICAL MATERIEL CORPORATION claims proprietary right in the material disclosed herein.
This drawing is issued in confidence for engineering information only and may not be reproduced or used
to manufacture anything shown hereon without permission from THE TECHNICAL MATERIEL CORPORATION
to the user. This drawing is loaned for mutual assistance and is subject to recall at any time.

UNLESS OTHERWISE SPECIFIED DIMENSIONS ARE IN INCHES AND INCLUDE CHEMICALLY APPLIED OR PLATED FINISHES	
TOLERANCES ON	
DECIMALS .X ± .05 .XX ± .01 .XXX ± .005	FRACTIONS ± 1/64 ANGLES ± 0° -30'

QTY. REQ.	ITEM	PART NO.	DESCRIPTION	SYMBOL
O. POSE LIST OF MATERIAL				
FINAL APPROVAL		DATE	THE TECHNICAL MATERIEL CORP. MAMARONECK, NEW YORK	
MECH. DES.		DATE		
ELECT. DES.		DATE		
CHECKED		DATE		
DRAWN		DATE	CABLE, SWITCH	
MATERIAL		SIZE	CODE IDENT. NO.	DWG NO.
FINISH		C	82679	CA-1734
		SCALE	SHEET	OF
			1	A

CA-1734 7 B