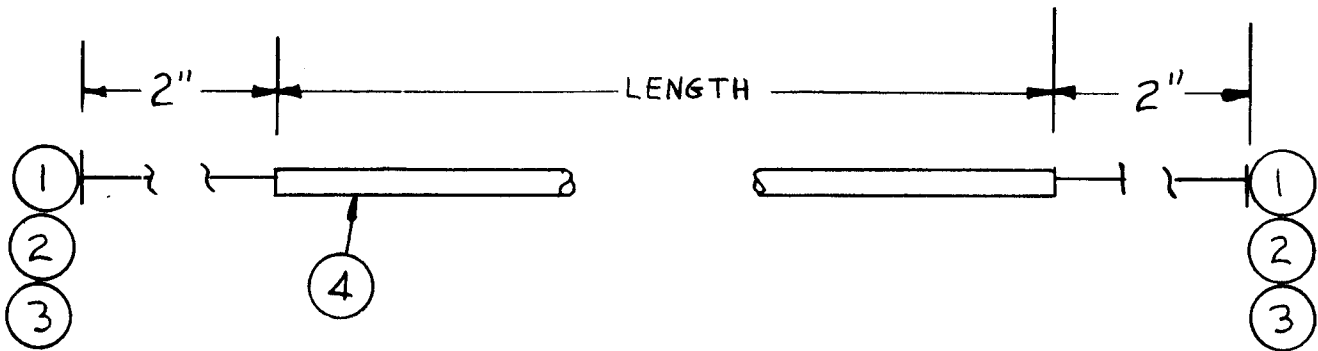


APPLICATION			REVISIONS						
QTY	MODEL USED ON	ASS'Y NO.	LTR	DESCRIPTION	DATE	E.M.N.NO	DRAFT	CHKD	APPD
3	SYM1203		Ø	ORIG RELEASE FOR PROD	11/1/71		CV		



CA1656-XX

← LENGTH IN INCHES.

6	CD101-1MW	CORD, NYLON, LACING
5	BS100	SOLDER, TIN ALLOY
4	PX100-1-375	INS, SLVG, BLK
3	MWC1A(19)U 5	WIRE, ELEC, INS
2	MWC1A(19)U 9	WIRE, ELEC, INS
1	MWC1A(19)U 0	WIRE, ELEC, INS

UNLESS OTHERWISE SPECIFIED
DIMENSIONS ARE IN INCHES
AND INCLUDE CHEMICALLY APPLIED
OR PLATED FINISHES

REQ'D	ITEM	PART NUMBER	DESCRIPTION	SYM.
-------	------	-------------	-------------	------

LIST OF MATERIAL

DECIMALS .X ± .05 .XX ± .01 .XXX ± .005	FRACTIONS 1/64 ANGLES 0°-30'	TOLS.	FINAL APPROVAL <i>[Signature]</i>	DATE 28 Oct 71
MATERIAL			MECH. DES.	DATE
FINISH			ELECT. DES. <i>[Signature]</i>	DATE 28 Oct 71
			CHECKED	DATE
			DRAWN <i>[Signature]</i>	DATE 28 Oct 71

THE TECHNICAL MATERIEL CORP.
MAMARONECK, NEW YORK

CABLE, PWR INPUT

NOTICE TO PERSONS RECEIVING THIS DRAWING
THE TECHNICAL MATERIEL CORPORATION claims proprietary right in the material disclosed hereon. This drawing is issued in confidence for engineering information only and may not be reproduced or used to manufacture anything shown hereon without permission from THE TECHNICAL MATERIEL CORPORATION to the user. This drawing is loaned for mutual assistance and is subject to recall at any time.

SIZE A	CODE IDENT. NO. 82679	DWG NO. CA1656	ISSUE Ø
SCALE		SHEET OF	