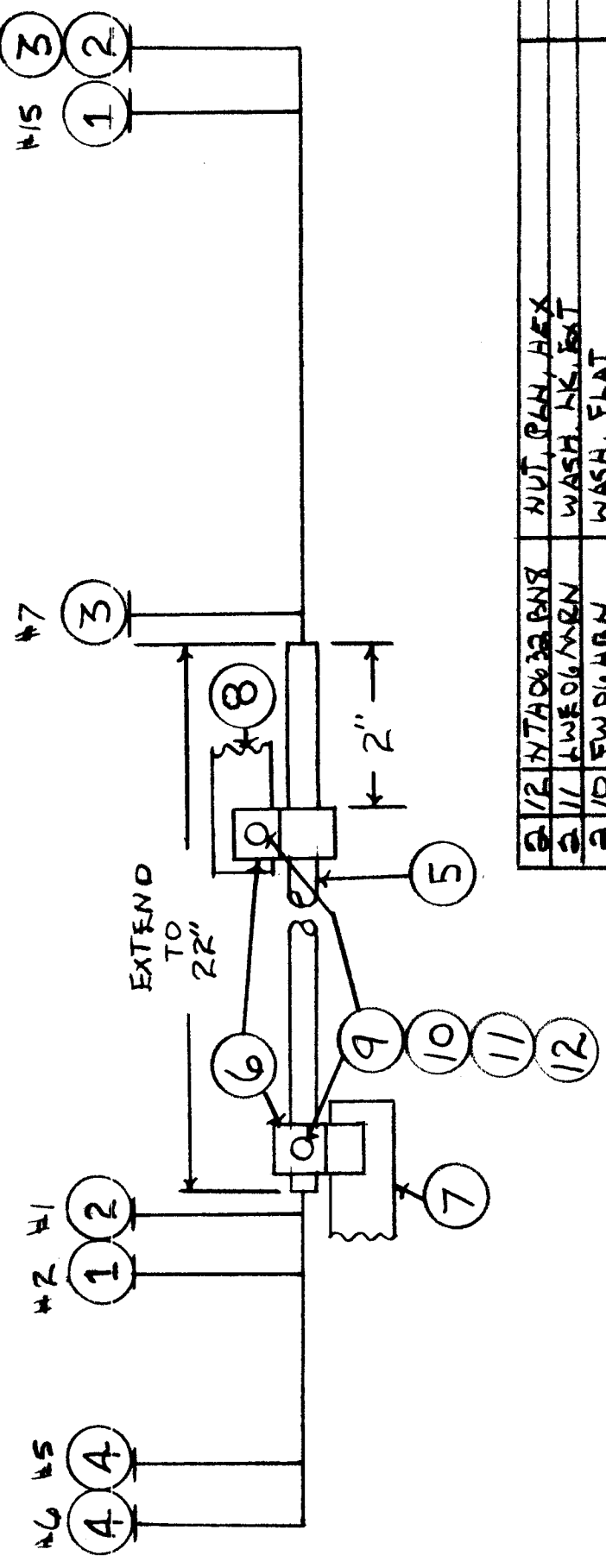


REQ. PER UNIT: 1
 MODEL: GPTM500YA
 USED ON: CA1601
 ASSY. NO.:
 DATE: 12-7-70



REQ. ITEM	PART NO.	DESCRIPTION	SYMBOL
2 12	NTA0632 BNS	NUT, PHN, HEX	
2 11	LWE06 MEN	WASH, HK, EXT	
2 10	FW06 HRN	WASH, FLAT	
2 9	SCAP 0632 BNS	SCREW, WASH	
1 8	TM 105-10A	TERM. BD. FNG	
1 7	TM 105-6A	TERM. BD. FNG	
2 6	CU 102-2	CLIP, BRN, NYLON	
5 5	PA100-15148	SLUG, INS, BK	
4 4	MWC29(7)U2	WIRE, INSULATED	
3 3	MWC24(7)U0	WIRE, INSULATED	
2 2	MWC24(7)U0	WIRE, INSULATED	
1 1	MWC24(7)U1	WIRE, INSULATED	

THE TECHNICAL MATERIEL CORP. MAMARONECK, NEW YORK	WIRING, HARNESS, BRANCHED
DATE: 12/7/70	SCALE: 1/2"=1'
ORIG REL FOR PROD	CV
EXP. RELEASE	12-7-70
UNLESS OTHERWISE SPECIFIED DIMENSIONS ARE IN INCHES AND INCLUDE CHEMICALLY APPLIED OR PLATED FINISHES	FRACCTIONS ± 1/64 ANGLES ± 0° 30'
TOLERANCES	DECIMALS .X ± .05 .XX ± .01 .XXX ± .005
TYPE & TEMPER	HEAT TREAT. SPEC
MATERIAL	FINISH & SPEC. NO.
DRAWN: [Signature]	CHECKED: [Signature]
FINAL APPROVAL: [Signature]	MECH. DES. APP. [Signature]
CA1601	1/7/70