

5

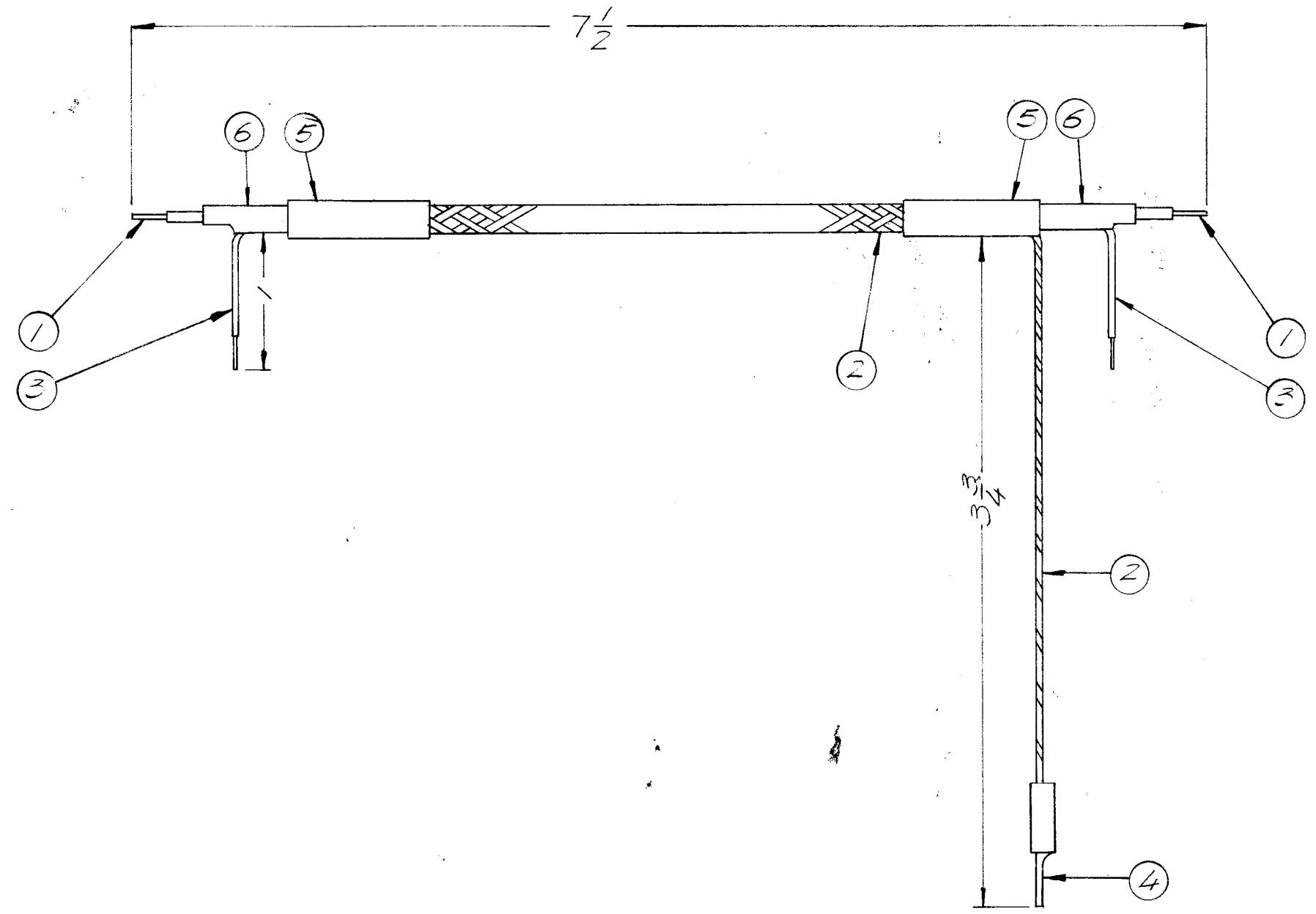
4

3

2

1

REVISIONS						
ZONE	LTR	DESCRIPTION	DATE	E.M.N.NO	DRAFT	CHKD APPD
	X	EXP RELEASE	6/2/70		GE	
	Ø	ORIG RELEASE FOR PROD	7/9/71		Ø	P.E.B.



REQ'D	ITEM	PART NUMBER	DESCRIPTION	SYM.
X	6	PX830	INS. SLEEVING ELEC. SHRINK	
X	5	PX830	INS. SLEEVING ELEC. SHRINK	
1	4	TE-159-34160	LUG SPACE	
X	3	MWC 24(100)	WIRE INS.	
X	2	WL103-	BRAID WIRE ELEC.	
X	1	RG 174/U	CABLE, RF	

O. POSE LIST OF MATERIAL			
<p>THE TECHNICAL MATERIEL CORP. MAMARONECK, NEW YORK</p> <p>CABLE ASS'Y RF COUNTER INPUT</p>			
SIZE	CODE IDENT. NO.	DWG NO.	ISSUE
B	82679	CA 1580	Ø
SCALE		SHEET OF	
		1	

1	HFR-4,5	
1	HFR-4	BMA 291
QTY / UNIT	MODEL USED ON	ASS'Y NO.
APPLICATION		
CODE		

UNLESS OTHERWISE SPECIFIED DIMENSIONS ARE IN INCHES AND INCLUDE CHEMICALLY APPLIED OR PLATED FINISHES	
DECIMALS .X ± .05 .XX ± .01 .XXX ± .005	FRACTIONS 1/64 ANGLES 0° -30'
MATERIAL	
FINISH	

FINAL APPROVAL	DATE
<i>[Signature]</i>	7/9/71
MECH. DES.	DATE
ELECT. DES.	DATE
CHECKED	DATE
DRAWN	DATE
GE	6/1/70

**NOTICE TO PERSONS RECEIVING THIS DRAWING**  
THE TECHNICAL MATERIEL CORPORATION claims proprietary right in the material disclosed hereon. This drawing is issued in confidence for engineering information only and may not be reproduced or used to manufacture anything shown hereon without permission from THE TECHNICAL MATERIEL CORPORATION to the user. This drawing is loaned for mutual assistance and is subject to recall at any time.