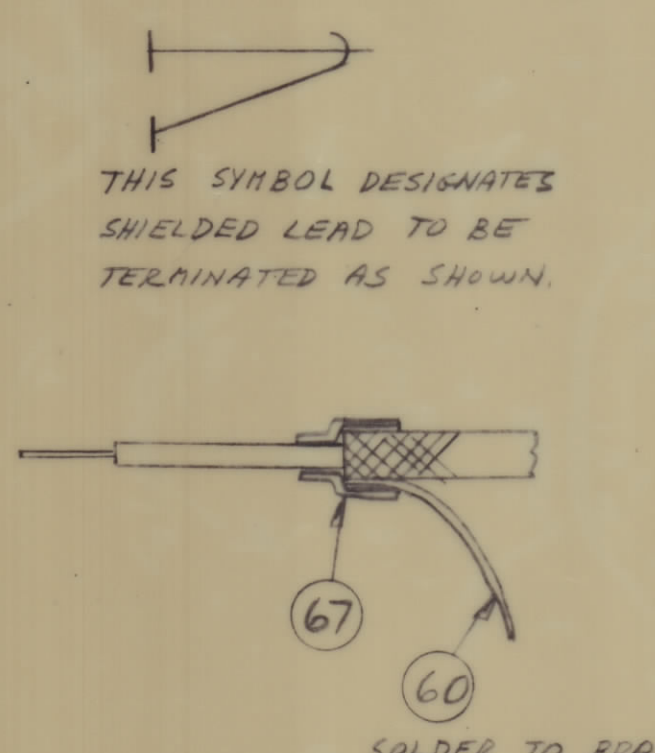
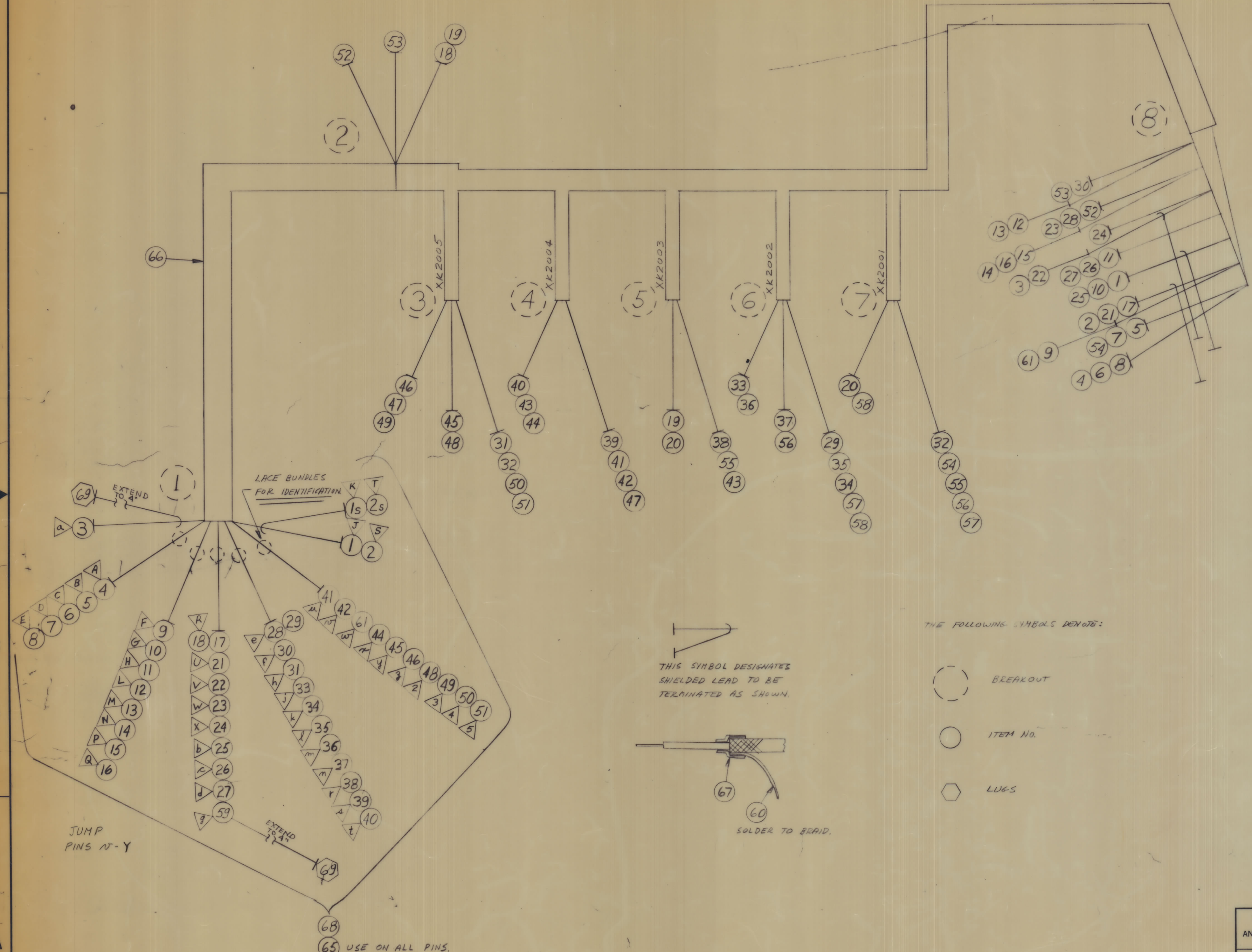
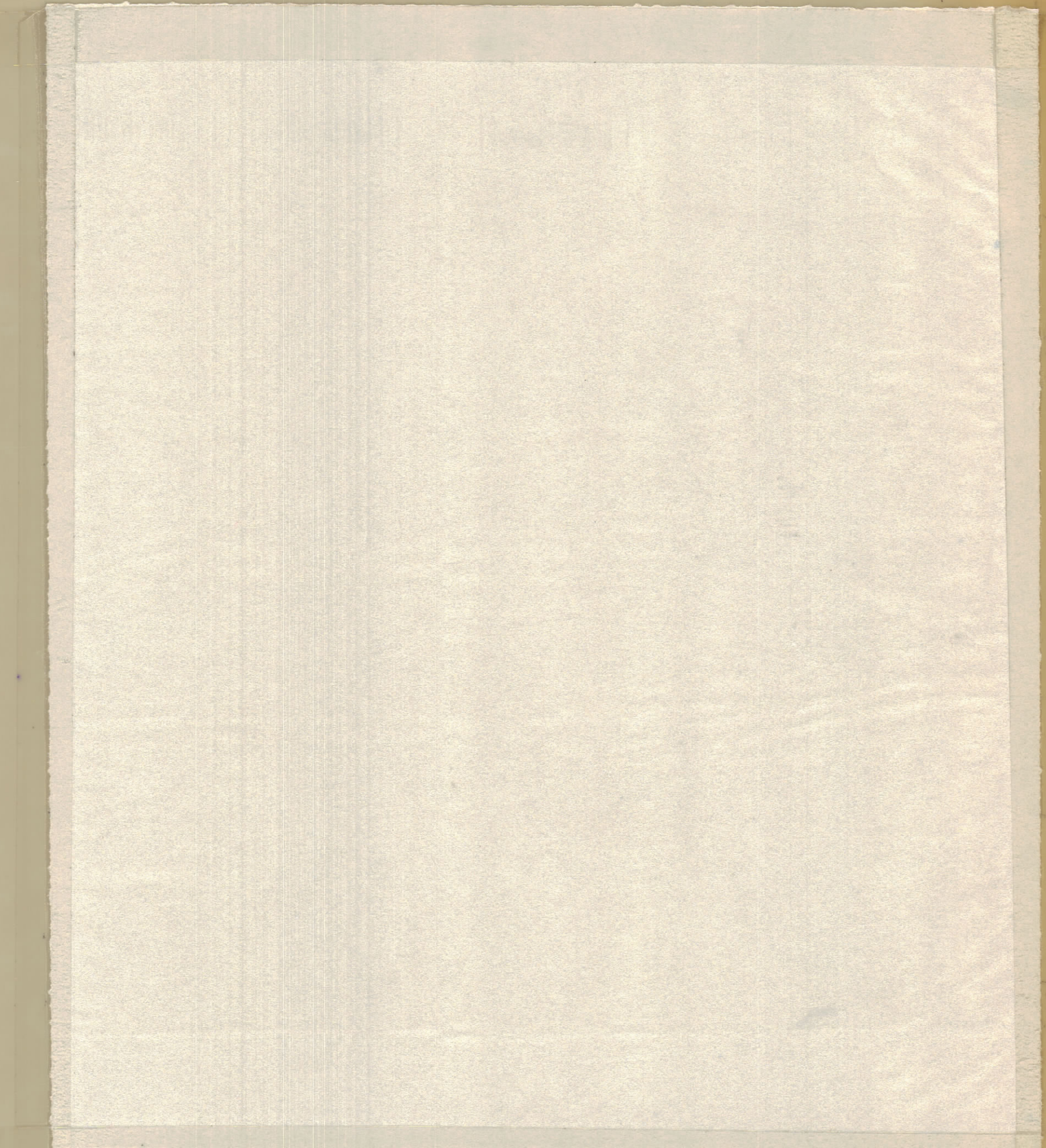


REVISIONS							
E.M.N.O.	DRAFT	CHKD	ZONE	LTR	DESCRIPTION	DATE	APPROVED
					REV. E PROGRAM	2/24/69	
					REV. F FROM REV. E	3/10/69	
					REV. G FROM REV. F	3/24/69	
					REV. H FROM REV. G	11/23/69	
					ORIGINAL RELEASE FOR PRODUCTION	4/27/70	



- THE FOLLOWING SYMBOLS DENOTE:
- BREAKOUT
  - ITEM NO.
  - LUGS



FOR SPARE PARTS ONLY  
DO NOT USE ON NEW UNITS

QTY. REQ.	ITEM	PART NO.	DESCRIPTION	SYMBOL
BUDETTI LIST OF MATERIAL				
FINAL APPROVAL		DATE	THE TECHNICAL MATERIEL CORP.	
MECH. DES.		DATE	MAMARONECK, NEW YORK	
ELECT. DES.		DATE	WIRING HARNESS BRNCHD	
CHECKED		DATE		
DRAWN		DATE		
MATERIAL			SIZE	CODE IDENT NO.
FINISH			SCALE	SHEET OF

1	PALA-10K	AX5094
QTY / UNIT	MODEL USED ON	ASS'Y NO.
APPLICATION		
CODE		

NOTICE TO PERSONS RECEIVING THIS DRAWING  
THE TECHNICAL MATERIEL CORPORATION claims proprietary right in the material disclosed herein. This drawing is issued in confidence for engineering information only and may not be reproduced or used to manufacture anything shown hereon without permission from THE TECHNICAL MATERIEL CORPORATION to the user. This drawing is loaned for mutual assistance and is subject to recall at any time.

CA1507 Sh1 of 3

REQ	ITEM	PART NUMBER	BREAKOUT		DESTINATION OR DESCRIPTION	
			FROM	TO	FROM	TO
	1	MWC24(7)SJ1	1	8	J2001 SHIELD	XA2001 PIN J
	2	MWC24(7)SJ2	1	8	SHIELD	E2007 H
	3	MWC24(7)SJ3	1	8	SHIELD	E2007 16 GRD
	4	LWC24(7)U1	1	8		XA2001
	5		1	8		A 4
	6		1	8		B B
	7		1	8		C 3
	8		1	8		D C
	9		1	8		E 2
	10		1	8		F 7
	11		1	8		G K
	12		1	8		H M
	13		1	8		L 21
	14		1	8		M 20
	15		1	8		N 19
	16	LWC24(7)U93	1	8		P 17
	17	LWC22(7)U94	1	8		Q 18
	18	LWC22(7)U94	1	2	J2001 Pin R	XA2001 Pin E
	19	LWC22(7)U94	2	5	E2003	E2003
	20	LWC22(7)U94	5	7	XK2003 Pin 7	XK2003 Pin 7
	21	LWC24(7)U95	1	8	J2001	XK2001 10
	22		1	8		XA2001 F
	23		1	8		V 15
	24		1	8		W W
	25	LWC24(7)U1	1	8	J2001 Pin b	XA2001 Pin L

CA1507 Sh 2 of 3

REQ	ITEM	PART NUMBER	BREAKOUT		DESTINATION OR DESCRIPTION	
			FROM	TO	FROM	TO
	26	LWC24(7)U 2	1	8	J2001	Pin C XA2001 Pin N
	27	3	1	8	J2001	d XA2001 P
	28	4	1	8	J2001	e XA2001 V
	29	4	1	6		e XK2002 2
	30	LWC24(7)U 5	1	8		f XA2001 X
	31	MWC22(7)U 1	1	3	J2001	h XK2005 3
	32	1	3	7	XK2005	3 XK2001 1
	33	2	1	6	J2001	j XK2002 8
	34	3	1	6		k
	35	5	1	6		l
	36	6	1	6		m
	37	MWC22(7)U 7	1	6		n XK2002 6
	38	LWC24(7)U 8	1	5		r XK2003 3
	39	LWC24(7)U 90	1	4		s XK2004 2
	40	LWC24(7)U 91	1	4		t
	41	MWC22(7)U 92	1	4		u
	42	LWC24(7)U 93	1	4	J2001	v
	43	LWC24(7)U 8	5	4	XK2003	3
	44	LWC24(7)U 95	1	4	J2001	x XK2004 8
	45	MWC22(7)U 96	1	3	J2001	y XK2005 11
	46	MWC22(7)U 97	1	3	J2001	z XK2005 9
	47	MWC22(7)U 97	3	4	XK2005	9 XK2004 1
	48	LWC24(7)U 98	1	3	J2001	z XK2005 6
	49	LWC24(7)U 2	1	3	J2001	3 XK2005 7
	50	MWC22(7)U 3	1	3	J2001	Pin 4 Pin 1

CA1507 Sh 3 of 3

REQ	ITEM	PART NUMBER	BREAKOUT		DESTINATION OR DESCRIPTION	
			FROM	TO	FROM	TO
	51	LWC24(7)U 4	1	3	J2001 Pin 5	XK2005 Pin 2
	52	96	8	2	XA2001 U	E2001
	53	95	8	2	XA2001 Y	E2002
	54	7	8	7	XA2001 D	XK2001 Pin 2
	55	LWC24(7)U 9	7	5	XK2001 1	XK2003 2
	56	MWC22(7)U 8	7	6	4	XK2002 11
	57	MWC22(7)U 90	7	6	5	XK2002 5
	58	MWC22(7)U 91	7	6	XK2001 8	XK2002 Pin 4
	59	LWC24(7)U 00	1	1	J2001 Pin 8	J2001 GRD
	60	LWC24(7)U 0			WIRE, ELEC, INS.	
	61	LWC24(7)U 91	1	8	J2001 Pin W	E2009 Pin 8
	62					
	63					
	64					
	65	PX100-1-106			INS, SLUG, BLK	
	66	PX100-1-625			INS, SLUG, BLK	
	67	PX830-12-1			INS, SLUG, SHRINK	
1	68	M53102A32-914P			CONN, RECP, HL 52/c	J2001
2	69	TE104-2			TERM, LUG, LKG.	
	70	BS100			SOLDER, TIN ALLOY	
	71	CD161-1MW			CORD, NYLON, LACING	
	72					
	73					
	74					
	75					