

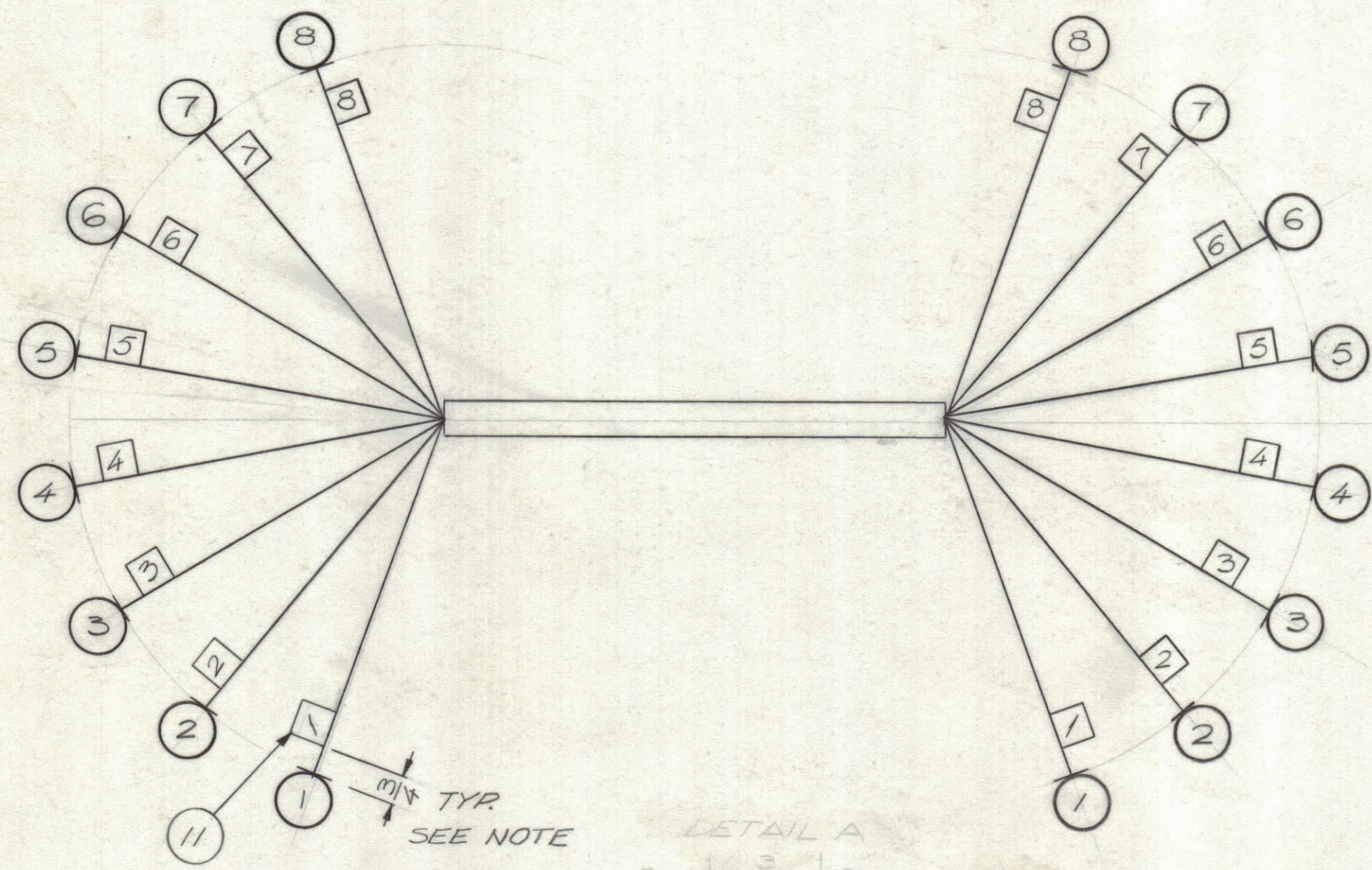
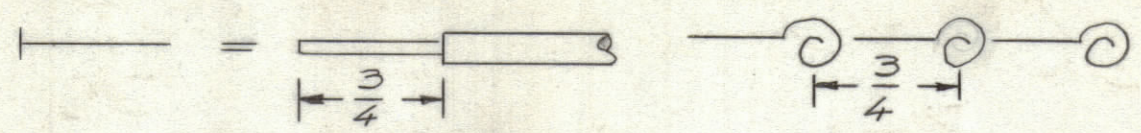
4

3

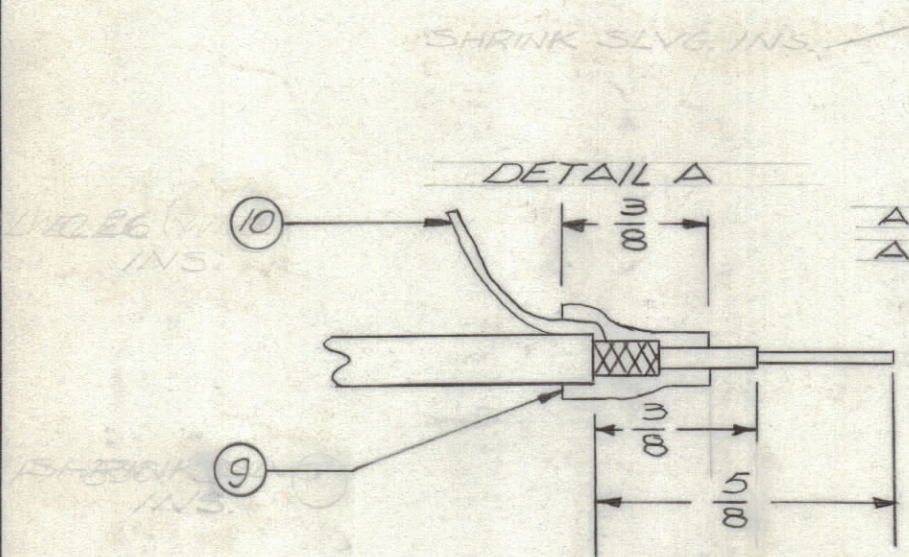
2

1

REVISIONS						
ZONE	LTR	DESCRIPTION	DATE	E.M.N.NO	DRAFT	CHKD APPD
	X	EXPERIMENTAL RELEASE	7/3/69	X	GE	JD
	Ø	ORIGINAL RELEASE FOR PRODUCTION	8/8/69		Ø	



DETAIL A
 LABEL NOTE ALL ENDS
 ATTACH LABELS (LA 101) TO BOTH ENDS
 OF EACH WIRE (3/4" FROM END TIP)



SYMBOL DENOTES

- ITEM NO'S
- ⬡ BREAKOUTS
- TAGS

QTY. REQ.	ITEM	PART NO.	DESCRIPTION	SYMBOL
	16	LA 101	BAND, MARKER, CABLE	
X	10	LWC 26(7) 410	WIRE ELECTRICAL	
X	9	PX 830-12-1	INSULATION SLEEVING, ELEC.	
X	8	RG/174/U	RF COAXIAL CABLE	
	7			
	6			
	5			
	4			
	3			
	2			
X	1	RG/174/U	RF COAXIAL CABLE	

POSE

FINAL APPROVAL: [Signature] DATE: 8/8/69

MECH. DES. DATE

ELECT. DES. [Signature] DATE: 8/2/69

CHECKED: [Signature] DATE: 7-3-69

DRAWN: GE DATE: 7-2-69

THE TECHNICAL MATERIEL CORP.
 MAMARONECK, NEW YORK

WIRING HARNESS
 BRANCHED

SIZE	CODE IDENT. NO.	DWG. NO.	ISSUE
C	82679	CA 1491	Ø

SCALE: FULL SHEET OF

MTR ()-150		
QTY / UNIT	MODEL USED ON	ASS'Y NO.
APPLICATION		
CODE		
NOTICE TO PERSONS RECEIVING THIS DRAWING THE TECHNICAL MATERIEL CORPORATION claims proprietary right in the material disclosed hereon. This drawing is issued in confidence for engineering information only and may not be reproduced or used to manufacture anything shown hereon without permission from THE TECHNICAL MATERIEL CORPORATION to the user. This drawing is loaned for mutual assistance and is subject to recall at any time.		

4

3

2

1

CA 1491

Ø

A