

SYMBOL DENOTES

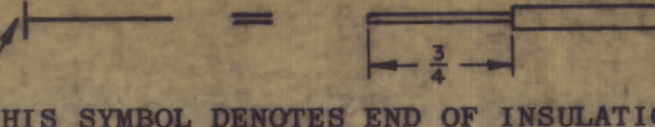
⬡ = DETAILED BREAKOUT LOCATIONS

○ } BREAKOUT STATIONS

○ } ITEM N°S

▽ } CONNECTOR PIN N°S

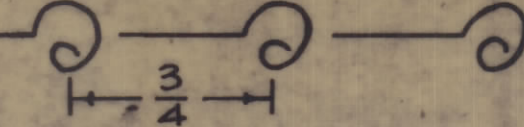
THIS SYMBOL DENOTES END OF INSULATION AND NAIL DRIVING POINT. WIRE MUST BE STRIPPED 3/4" BEYOND THIS POINT AND TINNED 1/2" UNLESS OTHERWISE SPECIFIED.



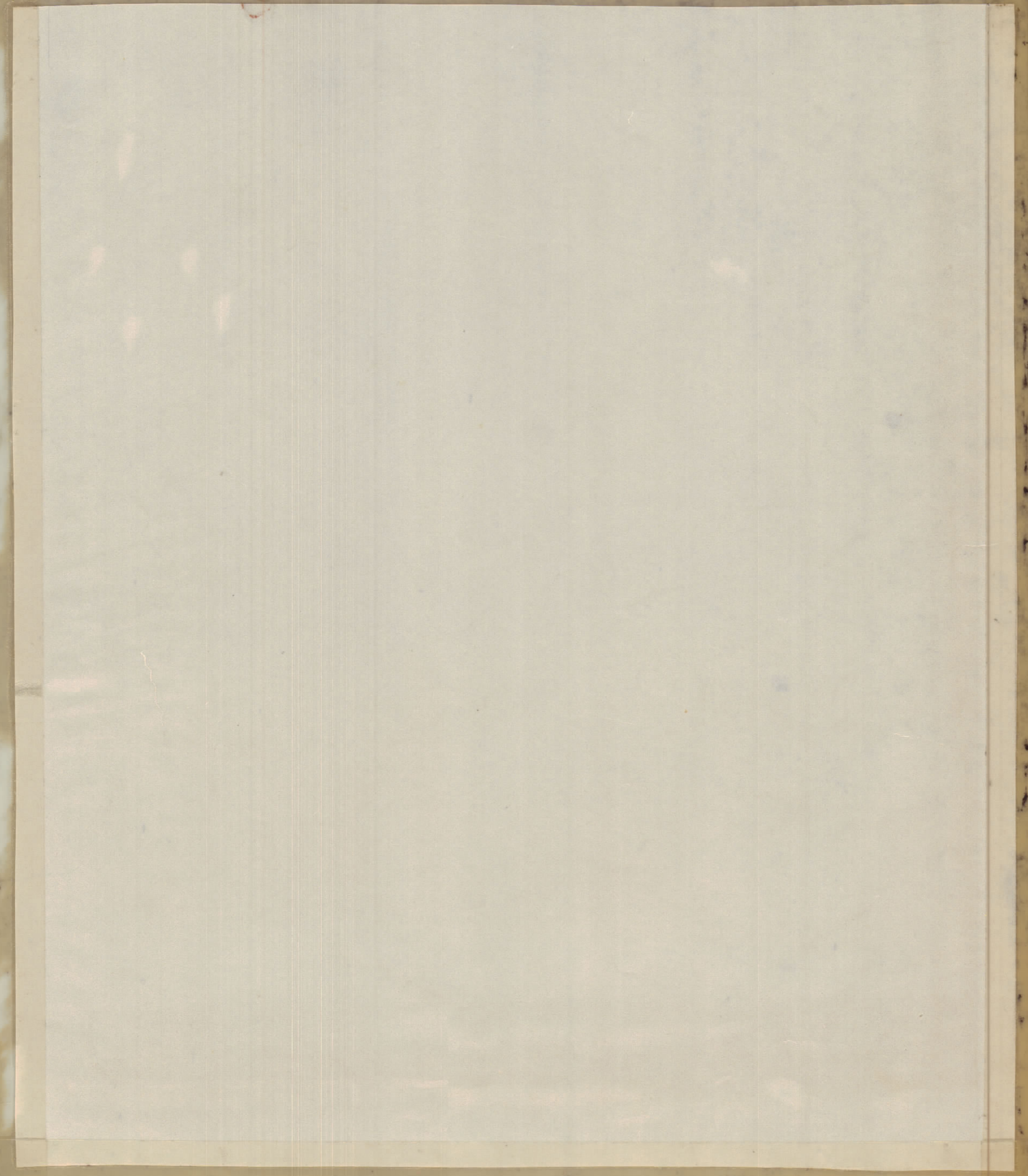
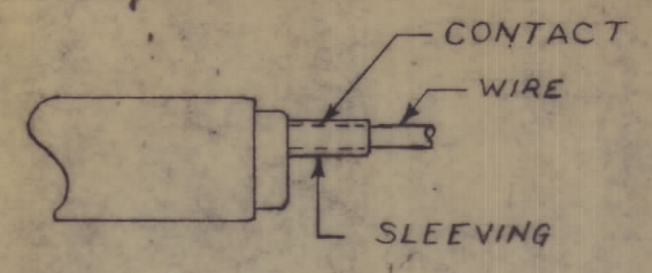
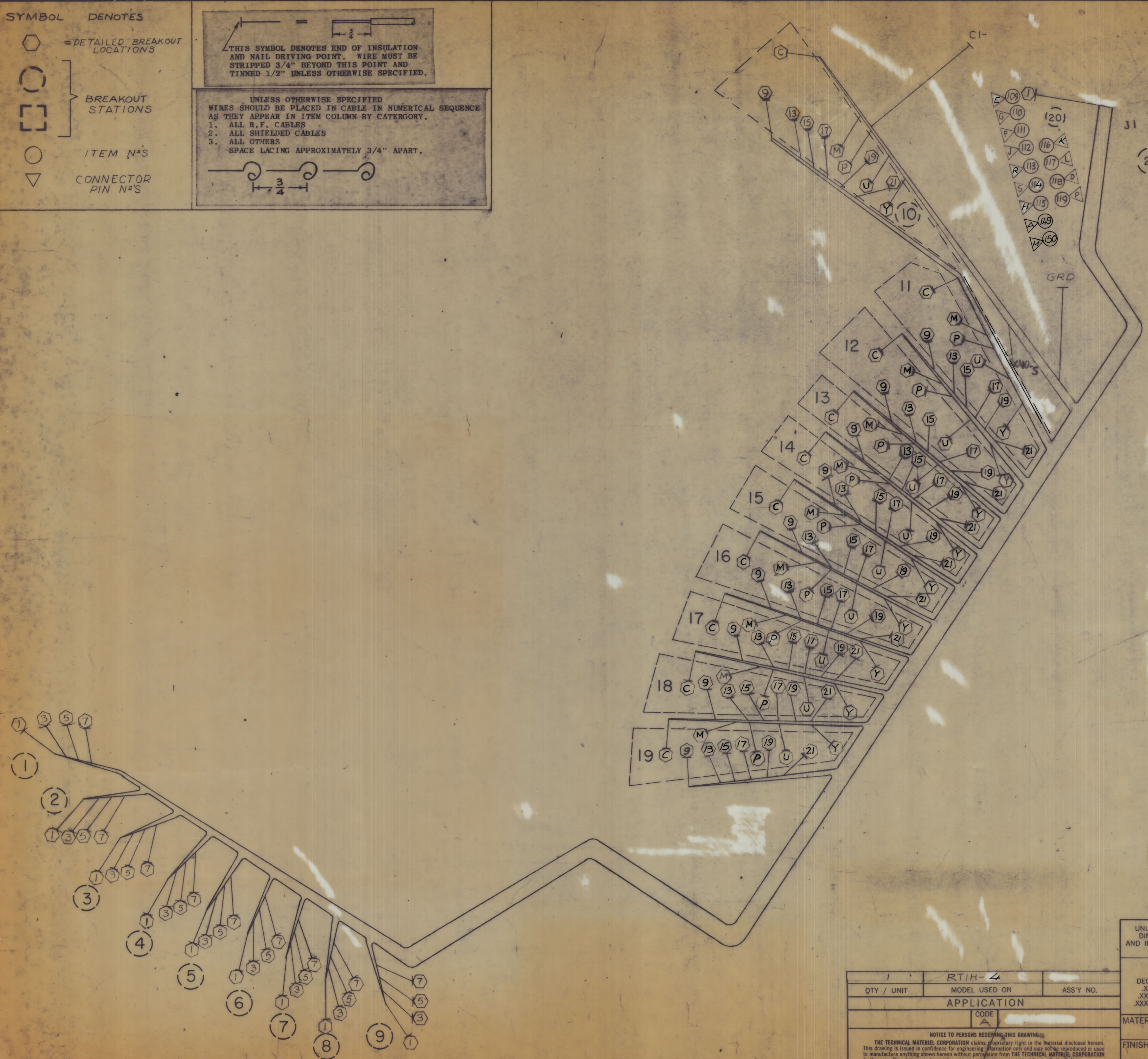
UNLESS OTHERWISE SPECIFIED WIRES SHOULD BE PLACED IN CABLE IN NUMERICAL SEQUENCE AS THEY APPEAR IN ITEM COLUMN BY CATEGORY.

1. ALL R.F. CABLES
2. ALL SHIELDED CABLES
3. ALL OTHERS

SPACE LACING APPROXIMATELY 3/4" APART.



REVISIONS						
ZONE	LTR	DESCRIPTION	DATE	E.M.N. NO.	DRAFT	CHKD APPD
	X	EXP. RELEASE	9/18/70			
		ORIGINAL RELEASE FOR PRODUCTION	9/18/70			



1	RTIH-4	
QTY / UNIT	MODEL USED ON	ASS'Y NO.
APPLICATION		
CODE	A	

NOTICE TO PERSONS RECEIVING THIS DRAWING
 THE TECHNICAL MATERIEL CORPORATION claims proprietary right in the material disclosed herein. This drawing is issued in confidence for engineering information only and may not be reproduced or used to manufacture anything shown hereon without permission from THE TECHNICAL MATERIEL CORPORATION to the user. This drawing is loaned for mutual assistance and is subject to recall at any time.

QTY. REQ.	ITEM	PART NO.	DESCRIPTION	SYMBOL
LIST OF MATERIAL				
UNLESS OTHERWISE SPECIFIED DIMENSIONS ARE IN INCHES AND INCLUDE CHEMICALLY APPLIED OR PLATED FINISHES		FINAL APPROVAL <i>S. Demare</i>	DATE 9-18-70	THE TECHNICAL MATERIEL CORP. MAMARONECK, NEW YORK WIRING, HARNESS, BRANCHED
TOLERANCES ON		MECH. DES. <i>Uzzo</i>	DATE 9-18-70	
DECIMALS X ± .05 XX ± .01 XXX ± .005	FRACTIONS ± 1/64 ANGLES ± 0°-30'	ELECT. DES.	DATE	
MATERIAL		CHECKED	DATE	
FINISH		DRAWN <i>Am</i>	DATE 9/26/69	SIZE CODE IDENT. NO. DWG. NO. ISSUE D 82679 CA 1487
SCALE 1:1			SHEET OF	

CA 1487