

REVISIONS						
ZONE	LTR	DESCRIPTION	DATE	E.M.N.NO	DRAFT	CHKD
	X	EXP. RELEASE	8-27-68		S.D.L.	
	Ø	ORIG. RELEASE FOR PROD.	8-2-68		R.G.	

THIS SYMBOL DENOTES END OF INSULATION AND NAIL DRIVING POINT. WIRE MUST BE STRIPPED 3/4" BEYOND THIS POINT AND TINNED 1/2" UNLESS OTHERWISE SPECIFIED.

UNLESS OTHERWISE SPECIFIED WIRES SHOULD BE PLACED IN CABLE IN NUMERICAL SEQUENCE AS THEY APPEAR IN ITEM COLUMN BY CATEGORY.

1. ALL R.F. CABLES
2. ALL SHIELDED CABLES
3. ALL OTHERS

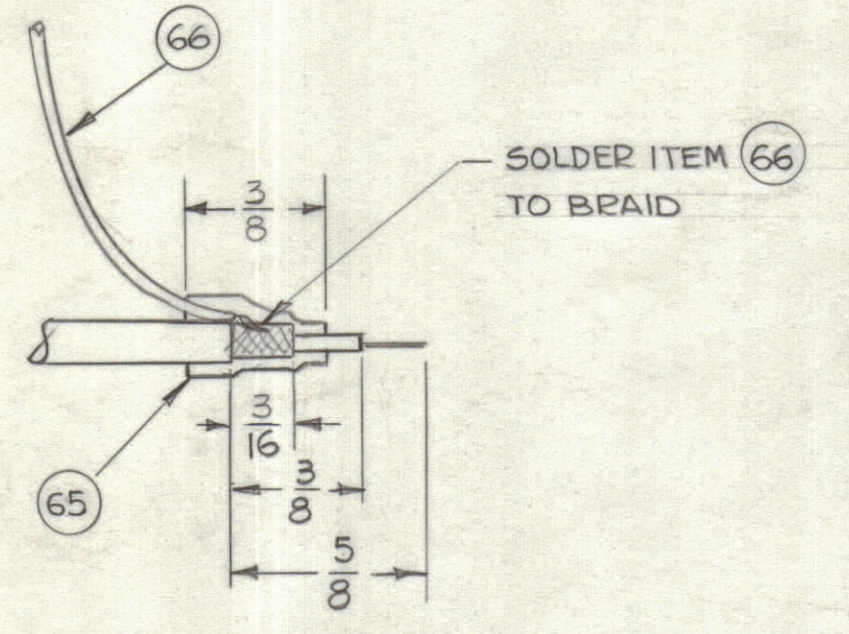
SPACE LACING APPROXIMATELY 3/4" APART.

SYMBOL DENOTES:

- = ITEM NOS
- = TAGS
- } = BREAK OUT

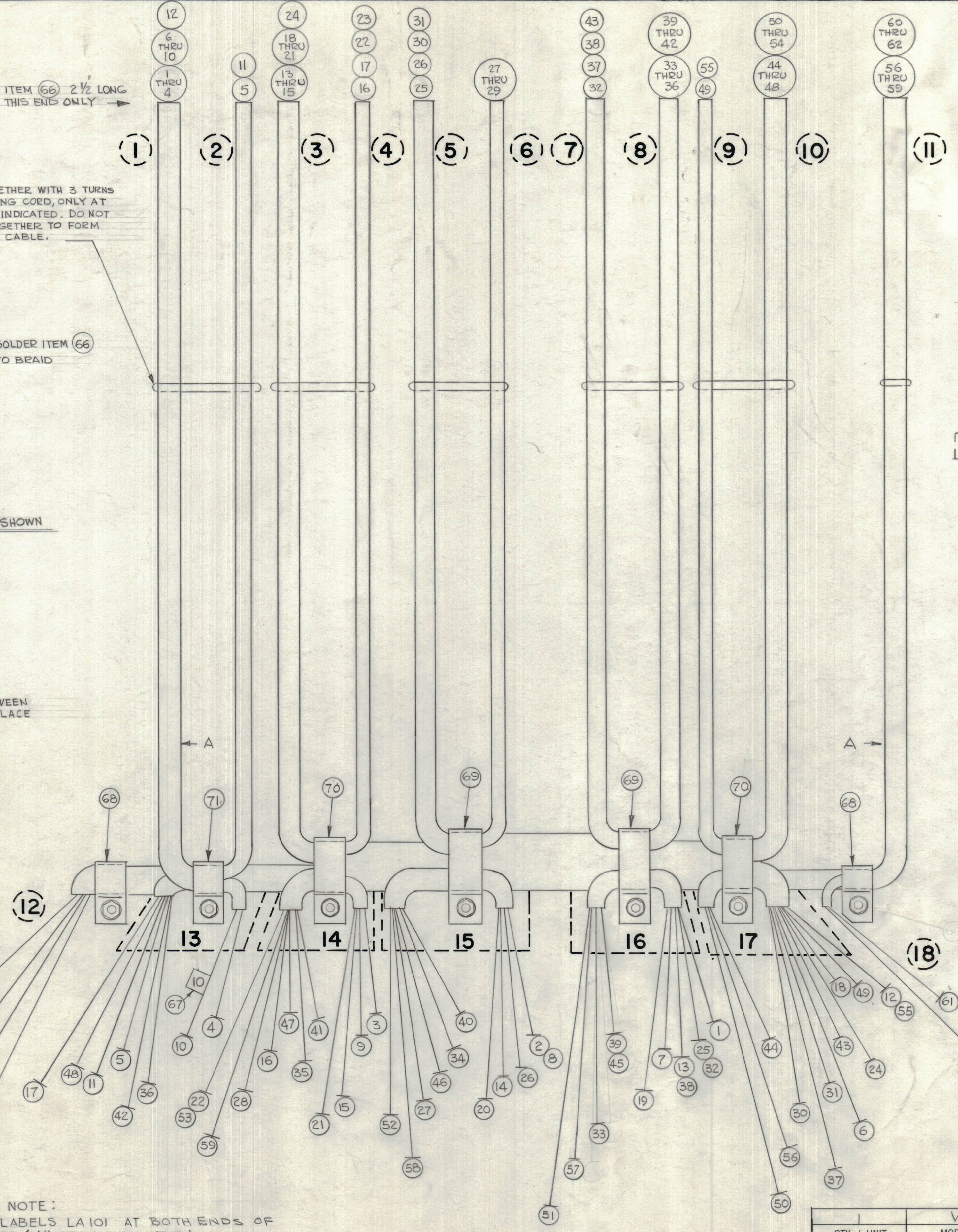
ITEM 66 2 1/2" LONG THIS END ONLY →

TIE TOGETHER WITH 3 TURNS OF LACING COED, ONLY AT POINTS INDICATED. DO NOT LACE TOGETHER TO FORM A RIGID CABLE.



FINISH ALL ENDS AS SHOWN

LACE TOGETHER BETWEEN POINT A-A - DO NOT LACE BREAK OUTS



ITEM 66 4" LONG THIS END ONLY →

NOTE: USE LABELS LA101 AT BOTH ENDS OF EACH WIRE (1 1/2" FROM ENDS TYP.)

QTY. REQ.	ITEM	PART NO.	DESCRIPTION	SYMBOL
O. POSE				
LIST OF MATERIAL				
THE TECHNICAL MATERIEL CORP. MAMARONECK, NEW YORK				
WIRING HARNESS, BRANCHED RF CABLE				
UNLESS OTHERWISE SPECIFIED DIMENSIONS ARE IN INCHES AND INCLUDE CHEMICALLY APPLIED OR PLATED FINISHES		FINAL APPROVAL <i>[Signature]</i> DATE MECH. DES. DATE		
TOLERANCES ON DECIMALS .X ± .05 .XX ± .01 .XXX ± .005		ELECT. DES. <i>[Signature]</i> DATE 10/4/68 CHECKED <i>[Signature]</i> DATE 10/3/68 DRAWN G.D.L. DATE 8-27-68		
MATERIAL		SIZE CODE IDENT. NO. DWG. NO. ISSUE		
FINISH		D 82679 CA 1437 Ø		
SCALE 1:1		SHEET OF		

VOX(-)-7		
QTY / UNIT	MODEL USED ON	ASS'Y NO.
APPLICATION		
CODE		
NOTICE TO PERSONS RECEIVING THIS DRAWING THE TECHNICAL MATERIEL CORPORATION claims proprietary right in the material disclosed hereon. This drawing is issued in confidence for engineering information only and may not be reproduced or used to manufacture anything shown hereon without permission from THE TECHNICAL MATERIEL CORPORATION to the user. This drawing is loaned for mutual assistance and is subject to recall at any time.		