

4

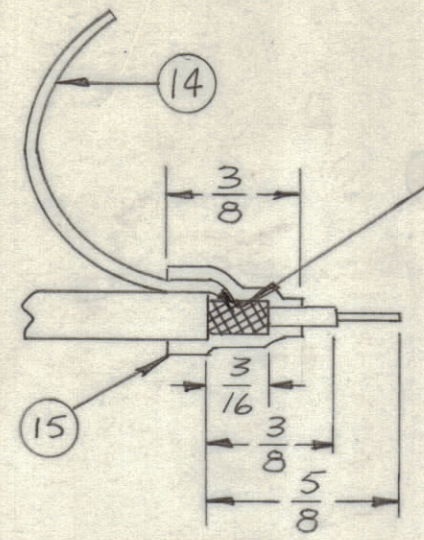
3

2

1

REVISIONS

ZONE	LTR	DESCRIPTION	DATE	E.M.N.NO	DRAFT	CHKD	APPD
	X	EXP. RELEASE	5.8.68	+	H.S.	J.P.	
	Ø	ORIG. RELEASE FOR PROD.	10-8-68	Ø	R.G.		

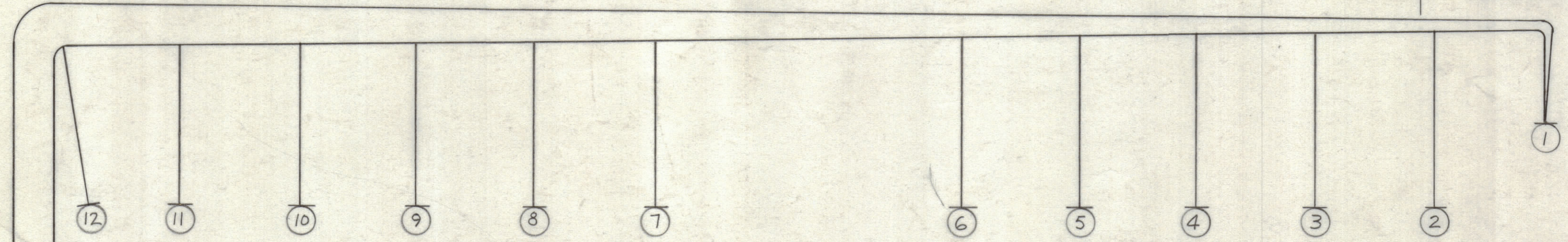


SOLDER ITEM 14 TO BRAID

FINISH ALL ENDS AS SHOWN

SYMBOL DENOTES  
 ○ = ITEM NO'S  
 □ = TAGS

A → (16) LACE TOGETHER BETWEEN POINTS "A-A"



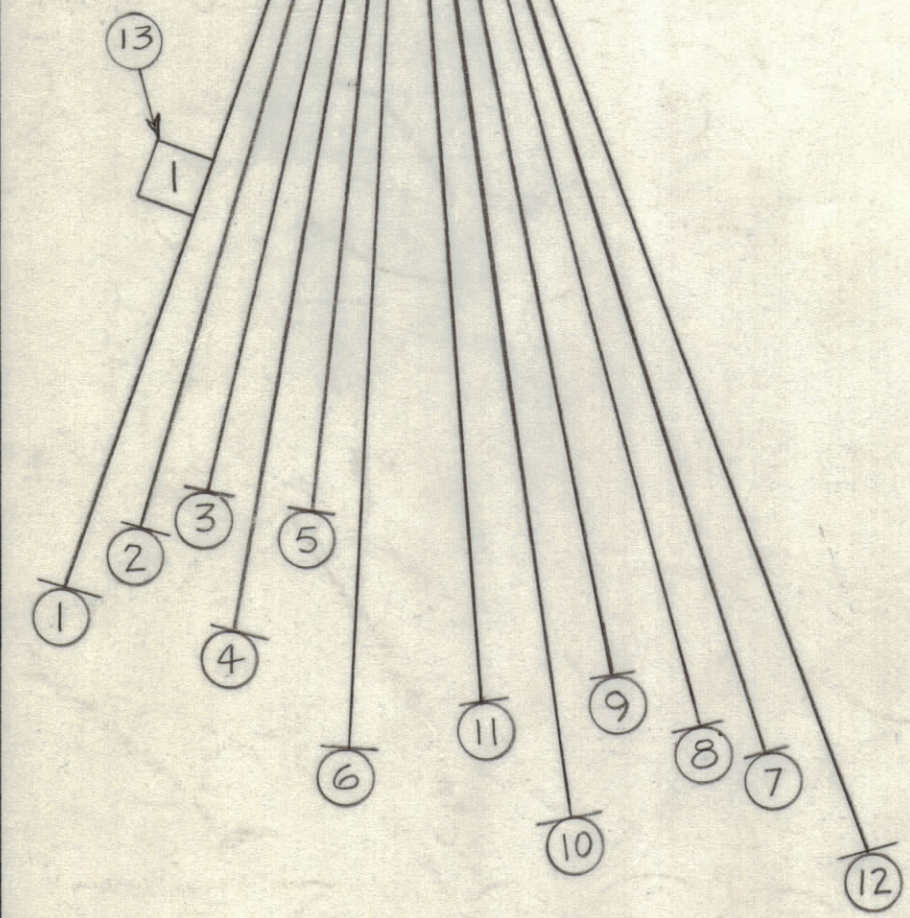
UNLESS OTHERWISE SPECIFIED WIRES SHOULD BE PLACED IN CABLE IN NUMERICAL SEQUENCE AS THEY APPEAR IN ITEM COLUMN BY CATEGORY.

- ALL R.F. CABLES
- ALL SHIELDED CABLES
- ALL OTHERS

SPACE LACING APPROXIMATELY 3/4" APART.

THIS SYMBOL DENOTES END OF INSULATION AND NAIL DRIVING POINT. WIRE MUST BE STRIPPED 3/4" BEYOND THIS POINT AND TINNED 1/2" UNLESS OTHERWISE SPECIFIED.

NOTE: USE ITEM 13 1-1/4" FROM ENDS (TYP)



QTY. REQ.	ITEM	PART NO.	FROM	DESCRIPTION	TO	SYMBOL
X	17	BS100		SOLDER, TIN ALLOY		
X	16	CD101-1MW		CORD, NYLON LACING		
24	15	PX830-12-1		INSULATION, SLEEVING ELECTRICAL SHRINK		
24	14	LWC26(7)U0		WIRE, ELEC, INS (3" EACH)		
12	13	LA101		BAND, MARKER, CBL #1 THRU #12		
I	12	RG174/U		CABLE, RF TB102 R129 & R130	J103 PINS S-15	
I	11				R131 - R136	J-8
I	10				R137 - R142	P-13
I	9				R143 - R148	F-6
I	8				R149 - R154	L-10
I	7			TB102 R155 - R160	J103	4-D
I	6			TB101 R161 & R162	J102	S-15
I	5				R163 - R168	J-8
I	4				R169 - R174	P-13
I	3				R175 - R180	F-6
I	2				R181 - R186	L-10
I	1	RG174/U		CABLE, RF TB101 R187 - R192	J102 PINS 4-D	

QTY. REQ.	ITEM	PART NO.	FROM	DESCRIPTION	TO	SYMBOL
O. POSE LIST OF MATERIAL						
FINAL APPROVAL			DATE			
MECH. DES.			DATE			
ELECT. DES.			DATE 10/4/68			
CHECKED			DATE 10/3/68			
DRAWN			DATE 5/8/68			
THE TECHNICAL MATERIEL CORP. MAMARONECK, NEW YORK						
WIRING HARNESS, BRANCHED (R.F.)						
SIZE	CODE IDENT. NO.	DWG. NO.	ISSUE			
C	82679	CA1436	Ø			
SCALE			SHEET OF			

QTY / UNIT	MODEL USED ON	ASS'Y NO.
1	VOX (7)-7	
APPLICATION		
CODE	S 401-451	
A		
NOTICE TO PERSONS RECEIVING THIS DRAWING		
THE TECHNICAL MATERIEL CORPORATION claims proprietary right in the material disclosed hereon. This drawing is issued in confidence for engineering information only and may not be reproduced or used to manufacture anything shown hereon without permission from THE TECHNICAL MATERIEL CORPORATION to the user. This drawing is loaned for mutual assistance and is subject to recall at any time.		

UNLESS OTHERWISE SPECIFIED DIMENSIONS ARE IN INCHES AND INCLUDE CHEMICALLY APPLIED OR PLATED FINISHES	
TOLERANCES ON	
DECIMALS	FRACTIONS
.X ± .05	± 1/64
.XX ± .01	ANGLES
.XXX ± .005	± 0° -30'
MATERIAL	
FINISH	