

SYMBOL DENOTES

○ = DETAILED BREAKOUT LOCATIONS

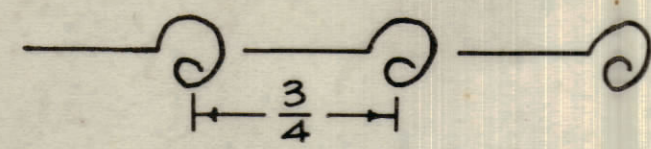
○ } BREAKOUT STATIONS

○ ITEM N°S

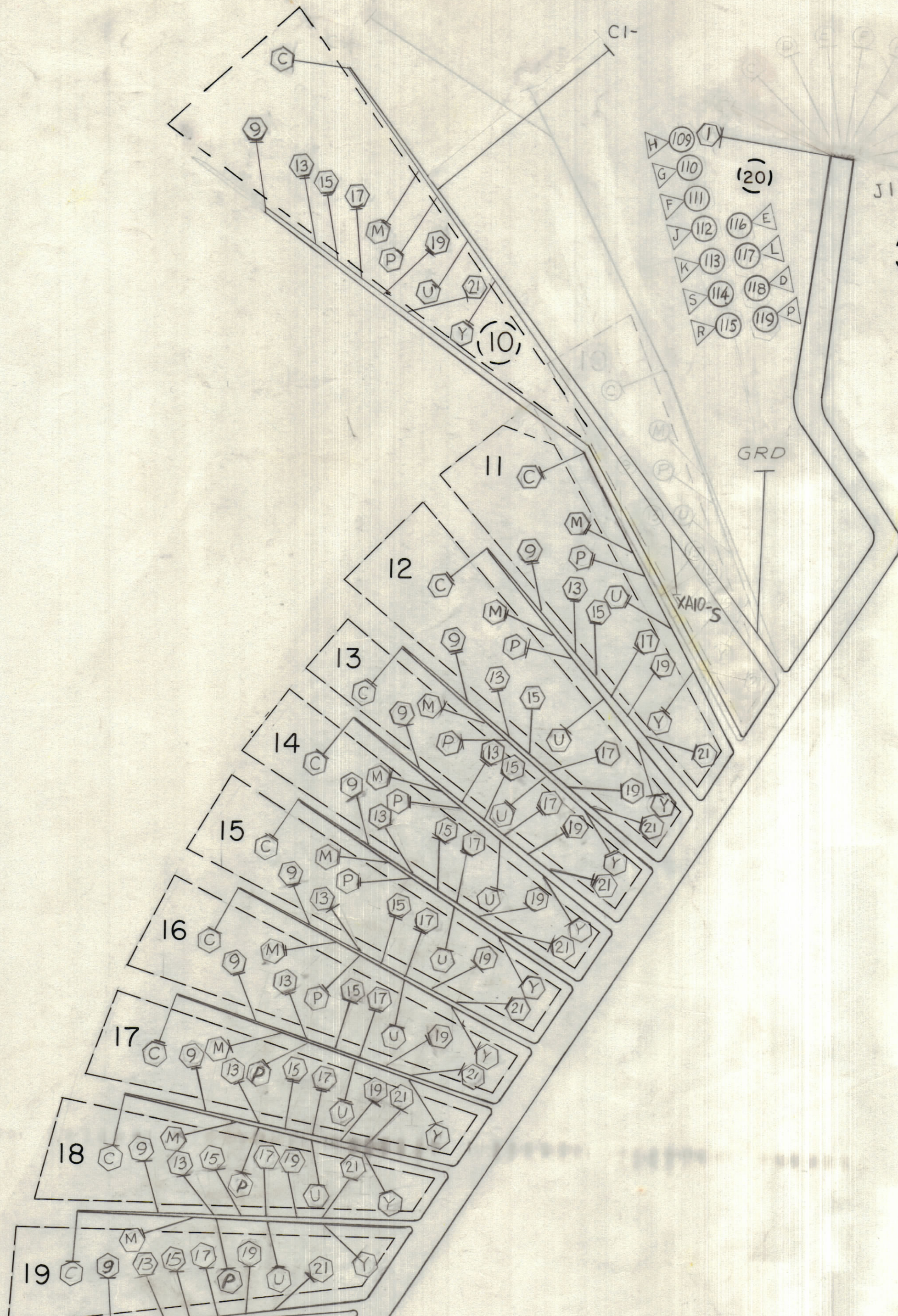
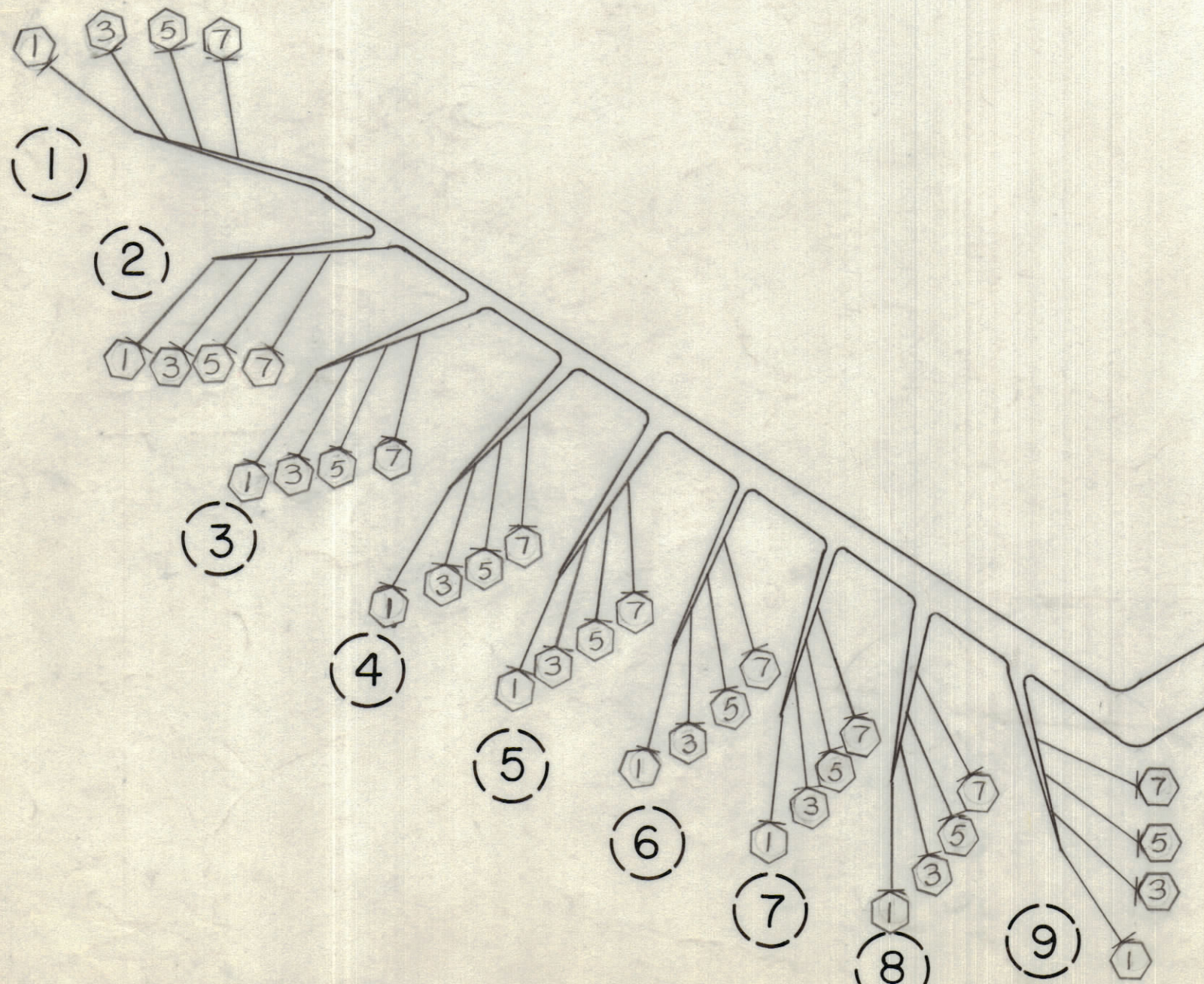
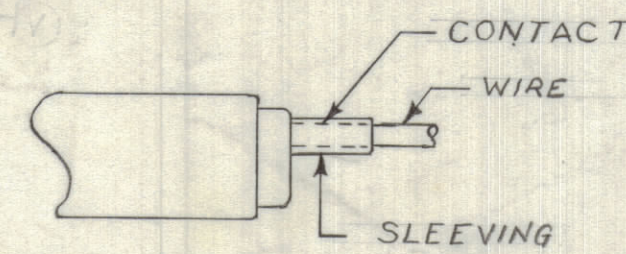
▽ CONNECTOR PIN N°S

THIS SYMBOL DENOTES END OF INSULATION AND NAIL DRIVING POINT. WIRE MUST BE STRIPPED 3/4" BEYOND THIS POINT AND TINNED 1/2" UNLESS OTHERWISE SPECIFIED.

UNLESS OTHERWISE SPECIFIED WIRES SHOULD BE PLACED IN CABLE IN NUMERICAL SEQUENCE AS THEY APPEAR IN ITEM COLUMN BY CATEGORY.
1. ALL R.F. CABLES
2. ALL SHIELDED CABLES
3. ALL OTHERS
SPACE LACING APPROXIMATELY 3/4" APART.



REVISIONS						
ZONE	LTR	DESCRIPTION	DATE	E.M.N.NO	DRAFT	CHKD APPD
	X	EXP. RELEASE	4/19/68		HS	SS
	Ø	ORIG. RELEASE	12/4/66		SS	HS
	A	LOC. CHG. FOR IT. 109 THRU 118 ADDED ITEM 151	12/4/69	19212	9E	HS



CA 1429 WIRING HARNESS, BRANCHED SHEET 1 of 3

REQ	ITEM	PART NUMBER	BREAKOUT		DESTINATION OR DESCRIPTION			
			FROM	TO	FROM	TO	TO	TO
1		LWC26 (7) U97	19-Y	1-1	XA19	PIN Y	XDS17	PIN A
2		U94	19-U	1-3		U	D	4
3		U5	19-P	1-3		P	H	1
4		U1	19-M	1-5		N	C	5
5		U4	19-C	1-7		C	2	2
6		U95	19-21	1-1		21	F	1
7		U96	19-19	1-1		19	B	1
8		U8	19-17	1-5		17	C	2
9		U93	19-15	1-3		15	F	1
10		U91	19-13	1-1		13	C	2
11		LWC26 (7) U6	19-13	1-5		13	E	1
12		LWC26 (7) U3	19-9	1-5	XA19	PIN 10	XDS17	PIN 6
13		LWC26 (7) U97	18-Y	2-1	XA18	PIN Y	XDS18	PIN 4
14		U94	18-U	2-3		U	D	4
15		U5	18-P	2-3		P	H	1
16		U1	18-M	2-5		M	C	5
17		U4	18-C	2-7		C	2	2
18		U95	18-21	2-1		21	B	1
19		U96	18-19	2-1		19	F	1
20		U8	18-17	2-5		17	C	2
21		U93	18-15	2-3		15	F	1
22		U91	18-13	2-1		13	C	2
23		LWC26 (7) U6	18-13	2-5		13	E	1
24		LWC26 (7) U3	18-9	2-5	XA18	PIN 10	XDS18	PIN 6
25		LWC26 (7) U97	17-Y	3-1	XA17	PIN Y	XDS19	PIN 4
26		U94	17-U	3-3		U	D	4
27		U5	17-P	3-3		P	H	1
28		U1	17-M	3-5		M	C	5
29		U4	17-C	3-7		C	2	2
30		U95	17-21	3-1		21	B	1
31		U96	17-19	3-1		19	F	1
32		U8	17-17	3-5		17	C	2
33		U93	17-15	3-3		15	F	1
34		U91	17-13	3-1		13	C	2
35		U6	17-13	3-5		13	E	1
36		LWC26 (7) U3	17-9	3-5	XA17	PIN 10	XDS19	PIN 6
37		LWC26 (7) U97	16-Y	4-1	XA16	PIN Y	XDS20	PIN 4
38		U94	16-U	4-3		U	D	4
39		U5	16-P	4-3		P	H	1
40		U1	16-M	4-5		M	C	5
41		U4	16-C	4-7		C	2	2
42		U95	16-21	4-1		21	B	1
43		U96	16-19	4-1		19	F	1
44		U8	16-17	4-5		17	C	2
45		U93	16-15	4-3		15	F	1
46		U91	16-13	4-1		13	C	2
47		LWC26 (7) U6	16-13	4-5	XA12	PIN 13	XDS24	PIN 13
48		LWC26 (7) U3	16-9	4-5	XA16	PIN 10	XDS16	PIN 6
49		LWC26 (7) U97	15-Y	5-1	XA15	PIN Y	XDS21	PIN A
50		LWC26 (7) U94	15-U	5-3	XA15	PIN U	XDS21	PIN D

1	RTIH-3	
QTY / UNIT	MODEL USED ON	ASS'Y NO.
APPLICATION		
CODE	5401-451	
NOTICE TO PERSONS RECEIVING THIS DRAWING		
THE TECHNICAL MATERIEL CORPORATION claims proprietary right in the material disclosed herein. This drawing is issued in confidence for engineering information only and may not be reproduced or used to manufacture anything shown hereon without permission from THE TECHNICAL MATERIEL CORPORATION to the user. This drawing is loaned for mutual assistance and is subject to recall at any time.		

UNLESS OTHERWISE SPECIFIED DIMENSIONS ARE IN INCHES AND INCLUDE CHEMICALLY APPLIED OR PLATED FINISHES		TOLERANCES ON	
DECIMALS	FRACTIONS	DECIMALS	FRACTIONS
.X ± .05	± 1/64	.XX ± .01	ANGLES ± 0° -30'
.XXX ± .005			

QTY. REQ.	ITEM	PART NO.	DESCRIPTION	SYMBOL
LIST OF MATERIAL				
THE TECHNICAL MATERIEL CORP. MAMARONECK, NEW YORK				
WIRING, HARNESS, BRANCHED				
SIZE		CODE IDENT. NO.	DWG NO.	ISSUE
D		82679	CA1429	A
SCALE 1:1				SHEET OF