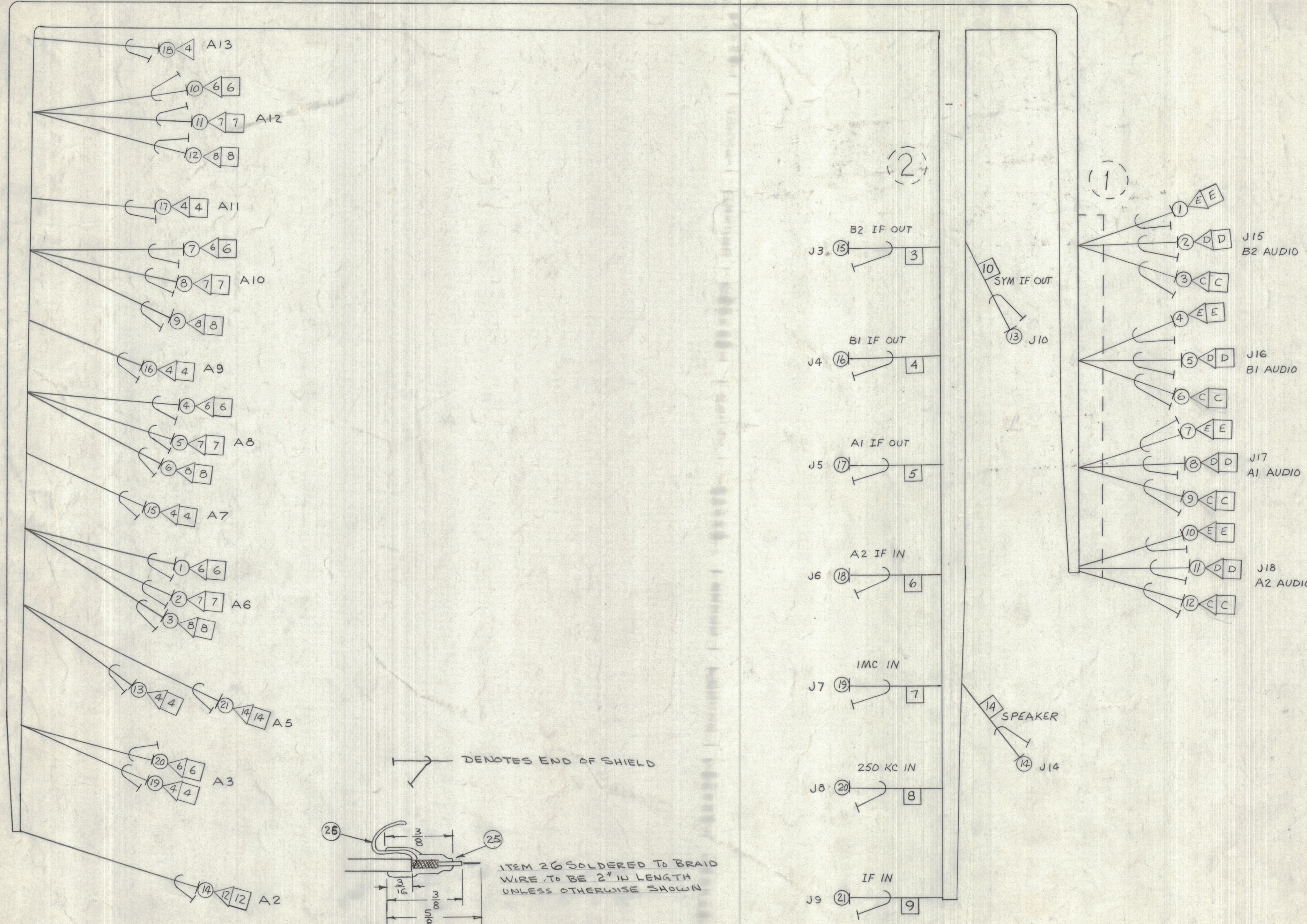


REVISIONS						
ZONE	LTR	DESCRIPTION	DATE	E.M.N.NO	DRAFT	CHKD APPD
X		EXP. RELEASE	2.1.68		WJ	TC.E
XI		REV & UPDATED	1.15.69	X1	RE	J.H. J.H.
		ORIGINAL RELEASE FOR PRODUCTION	1.22.69		RE	
A		LOC. TO IF1 THRU 21 ADD.	1/15/68, 19642		K.H. M.D.	OP.H.



QTY	ITEM	PART NO.	DESCRIPTION	FROM	TO	SYMBOL
	26	LWC26(7)U0	WIRE, ELEC, INSUL			
	25	PX B30-12-1	INSUL, SLVG, SHRINK			
42	24	LA101	MARKER, CABLE			
23	23	BS 100	SOLDER TIN ALLOY			
22	22	CD 101-1MW	CORD NYLON LACING			
21	21	RG 174/U	J9 GND	XA5-14	XA5-15	
20	20		J8	XA3-6	XA3-5	
19	19		J7	XA3-4	XA3-3	
18	18		J6	XA13-4	XA13-3	
17	17		J5	XA11-4	XA11-3	
16	16		J4	XA9-4	XA9-3	
15	15		J3	XA7-4	XA7-3	
14	14		J11	XA2-12	XA2-13	
13	13		J10	XA5-4	XA5-3	
12	12		J18 PIN C	XA12-8	XA12-3	
11	11		J18 D	XA12-7	XA12-3	
10	10		J18 E	XA12-6	XA12-3	
9	9		J17 C	XA10-8	XA10-3	
8	8		J17 D	XA10-7	XA10-3	
7	7		J17 E	XA10-6	XA10-3	
6	6		J16 C	XA8-8	XA8-3	
5	5		J16 D	XA8-7	XA8-3	
4	4		J16 E	XA8-6	XA8-3	
3	3		J15 C	XA6-8	XA6-3	
2	2		J15 D	XA6-7	XA6-3	
1	1	RG 174/U	J15 PIN E GND	XA6-6	XA6-3	

**SYMBOL DENOTES**

○ = ITEM NO'S

△ = PIN NO'S

□ = TAGS

UNLESS OTHERWISE SPECIFIED WIRES SHOULD BE PLACED IN CABLE IN NUMERICAL SEQUENCE AS THEY APPEAR IN ITEM COLUMN BY CATEGORY.

- ALL R.F. CABLES
- ALL SHIELDED CABLES
- ALL OTHERS

SPACE LACING APPROXIMATELY 3/4" APART.

THIS SYMBOL DENOTES END OF INSULATION AND NAIL DRIVING POINT. WIRE MUST BE STRIPPED 3/4" BEYOND THIS POINT AND TINNED 1/2" UNLESS OTHERWISE SPECIFIED.

1	MSAR-4	BNA 310
QTY / UNIT	MODEL USED ON	ASS'Y NO.
APPLICATION		
CODE	S401-451	

UNLESS OTHERWISE SPECIFIED DIMENSIONS ARE IN INCHES AND INCLUDE CHEMICALLY APPLIED OR PLATED FINISHES		FINAL APPROVAL		DATE
TOLERANCES ON		ELECT. DES.	DATE	
DECIMALS	FRACTIONS	CHECKED	DATE	
.X ± .05	± 1/64	DATE	2-1-68	
.XX ± .01	ANGLES	DRAWN	DATE	
.XXX ± .005	± 0° - 30'	DATE	2.1.68	

THE TECHNICAL MATERIEL CORP.			
MAMARONECK, NEW YORK			
WIRING HARNESS, BRANCHED			
(AUDIO OUT & I.F. OUT)			
SIZE	CODE IDENT. NO.	DWG NO.	ISSUE
D	82679	CA1416	A
SCALE	1:1	SHEET	OF