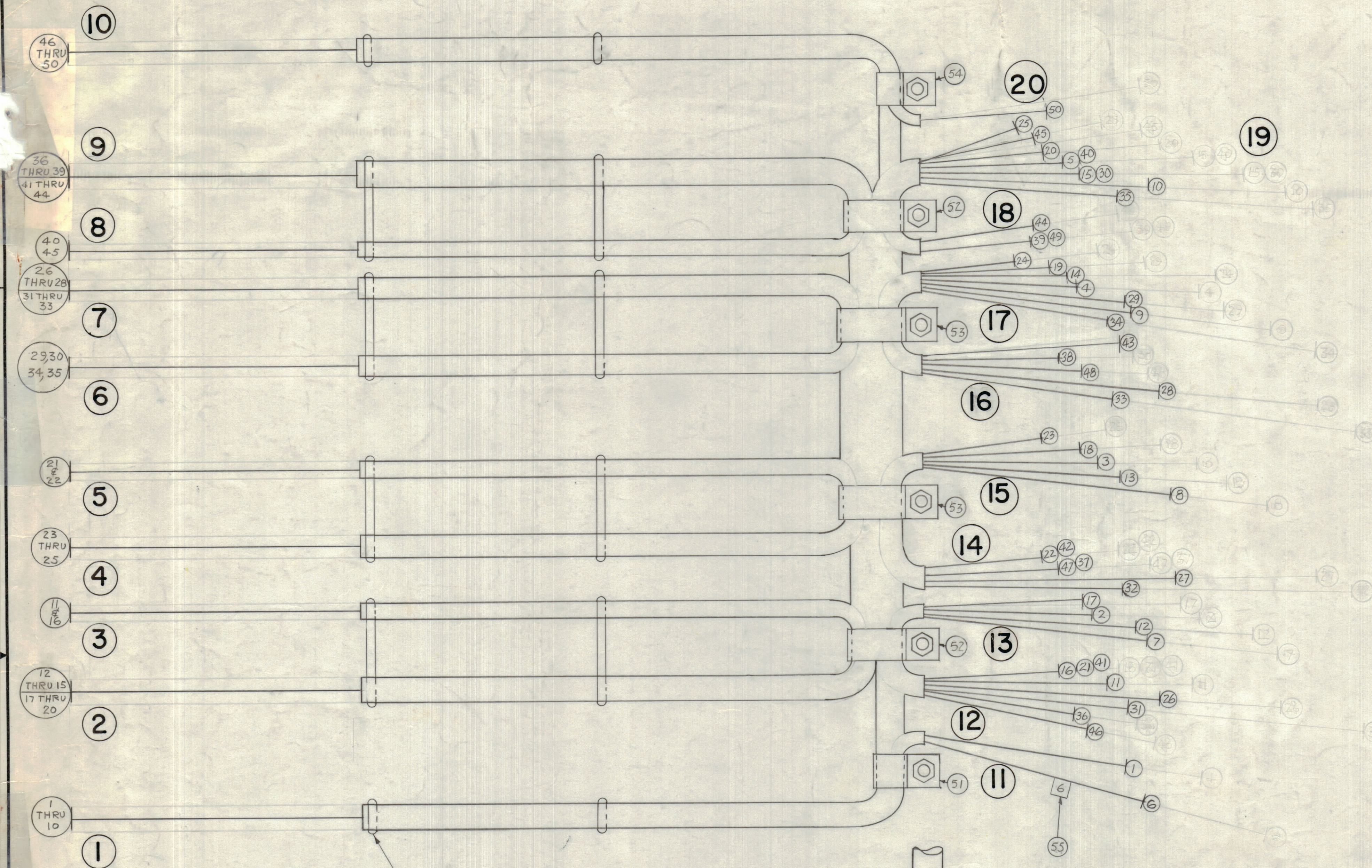


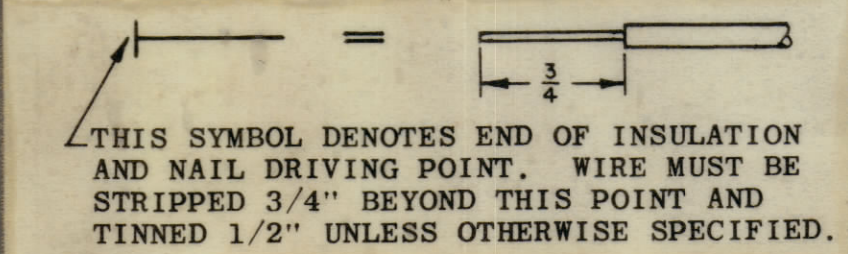
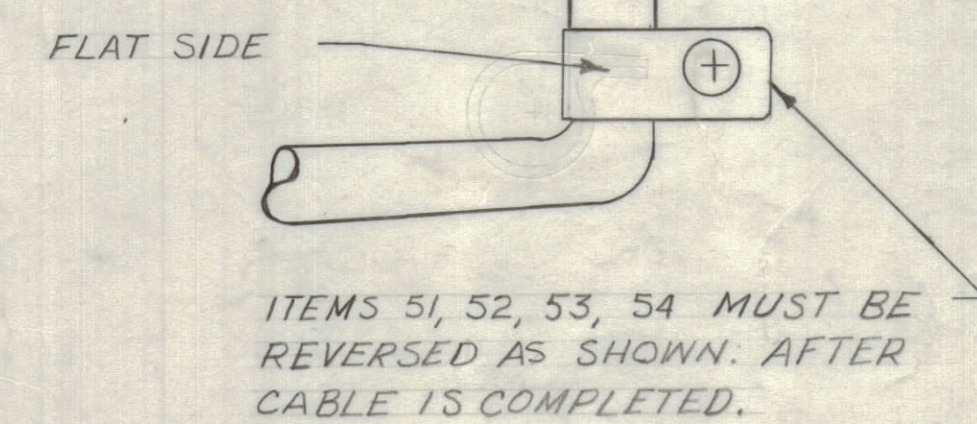
REVISIONS						
ZONE	LTR	DESCRIPTION	DATE	E.M.N.NO	DRAFT	CHKD APPD
X		EXP. RELEASE	9-22-67		HG	
X		ORIGINAL RELEASE FOR PROD.	12-11-67		RG	
A		REV. LEAD LENGTHS & BREAKOUTS	4/1/68	18552	HG	



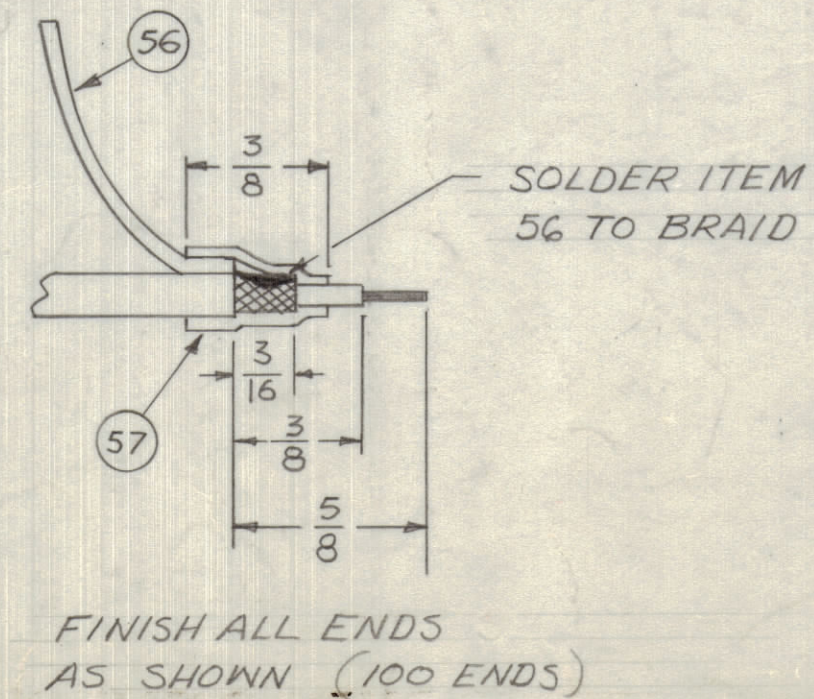
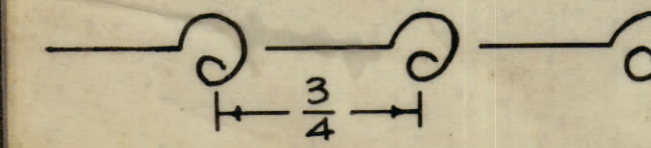
FROM BREAKOUT	QTY. REQ.	ITEM	PART NO.	FROM	DESCRIPTION	TO	SYMBOL
		X 59	BS100		SOLDER, TIN ALLOY		
		X 58	CD101-1MW		CORD, NYLON, LACING		
	104	57	PX830-12-1		INS. SLVS. SHRINK 3/8" LONG EA		
	104	56	LWC26(7)UO		WIRE ELECT. INS 4-1/2" LONG EA		
	2 EA	55	LA101		BAND MARKER CABLE NO'S 1 THRU 50		
	1	54	CU102-4		CLAMP, LOOP		
	2	53	CU102-12				
	2	52	CU102-10				
	1	51	CU102-5		CLAMP, LOOP		
			RG174/U				
10	20	50			TB102, R160		S105A PIN 1
10	18	49			R159		S104A 11
10	16	48			R158		S103A 11
10	14	47			R157		S102 11
10	12	46			R156		S101 11
8	19	45			R154		S105A 9
9	18	44			R153		S104A 9
9	16	43			R152		S103A 9
9	14	42			R151		S102 9
9	12	41			R150		S101 9
8	19	40			R148		S105A 7
9	18	39			R147		S104A 7
9	16	38			R146		S103A 7
9	14	37			R145		S102 7
9	12	36			R144		S101 7
6	19	35			R142		S105A 5
6	17	34			R141		S104A 5
7	16	33			R140		S103A 5
7	14	32			R139		S102 5
7	12	31			R138		S101 5
6	19	30			R138		S105A 3
6	17	29			R135		S104A 3
7	16	28			R134		S103A 3
7	14	27			R133		S102 3
7	12	26			R132		S101 3
4	19	25			TB101, R192		S105A 10
4	17	24			R191		S104A 10
4	15	23			R190		S103A 10
5	14	22			R189		S102 10
5	12	21			R188		S101 10
2	19	20			R186		S105A 8
2	17	19			R185		S104A 8
2	15	18			R184		S103A 8
3	12	17			R183		S102 8
3	12	16			R182		S101 8
2	19	15			R180		S105A 6
2	17	14			R179		S104A 6
2	15	13			R178		S103A 6
2	13	12			R177		S102 6
3	12	11			R176		S101 6
1	19	10			R174		S105A 4
1	17	9			R173		S104A 4
1	15	8			R172		S103A 4
1	13	7			R171		S102 4
1	11	6			R170		S101 4
1	19	5			R168		S105A 2
1	17	4			R167		S104A 2
1	15	3			R166		S103A 2
1	13	2			R165		S102 2
1	11	1			RG174/U, TB101, R164		S101 PIN 2

SYMBOL DENOTES
 ○ = ITEM NO'S
 □ = TAGS
 ○ = BREAKOUTS

TIE TOGETHER WITH 3 TURNS OF LACING CORD ITEM 58, ONLY AT POINTS INDICATED. DO NOT LACE TOGETHER TO FORM A RIGID CABLE.



UNLESS OTHERWISE SPECIFIED WIRES SHOULD BE PLACED IN CABLE IN NUMERICAL SEQUENCE AS THEY APPEAR IN ITEM COLUMN BY CATEGORY.
 1. ALL R.F. CABLES
 2. ALL SHIELDED CABLES
 3. ALL OTHERS
 SPACE LACING APPROXIMATELY 3/4" APART.



FINISH ALL ENDS AS SHOWN (100 ENDS)

QTY / UNIT	MODEL USED ON	ASS'Y NO.
1	LFE-1	

APPLICATION
 CODE A S401-451

UNLESS OTHERWISE SPECIFIED DIMENSIONS ARE IN INCHES AND INCLUDE CHEMICALLY APPLIED OR PLATED FINISHES	FINAL APPROVAL	DATE
	<i>The</i>	12/1/67
	<i>Junges</i>	12/11/67
	<i>HG</i>	9-22-67
	<i>M/L Allen</i>	12/11/67

LIST OF MATERIAL		THE TECHNICAL MATERIEL CORP.	
		MAMARONECK, NEW YORK	
WIRING HARNESS, BRANCHED (RF)			
SIZE	CODE IDENT. NO.	DWG NO.	ISSUE
D	82679	CA 1380	A
SCALE	1:1	SHEET	OF

NOTICE TO PERSONS RECEIVING THIS DRAWING
 THE TECHNICAL MATERIEL CORPORATION claims proprietary right in the material disclosed hereon. This drawing is issued in confidence for engineering information only and may not be reproduced or used to manufacture anything shown hereon without permission from THE TECHNICAL MATERIEL CORPORATION to the user. This drawing is loaned for mutual assistance and is subject to recall at any time.