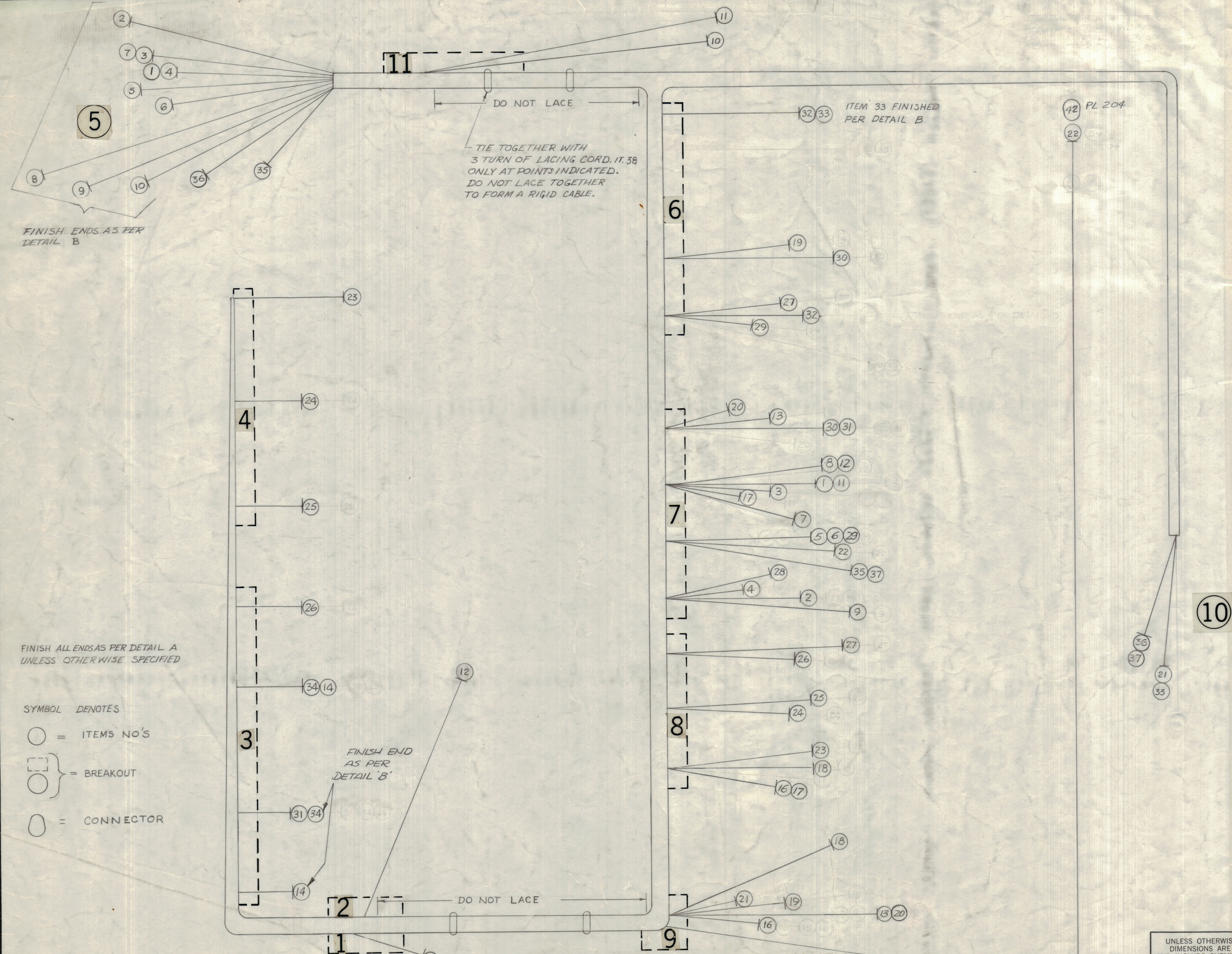


REVISIONS							
ZONE	LTR	DESCRIPTION	DATE	E.M.N.NO	DRAFT	CHKD	APPD
	X	EXPERIMENTAL RELEASE	9/18/67		Emf		
	X1	ITEM 16 WAS "TO J104 PIN 2 SHD PIN A"	11-6-67		S.D.L		
	X2	ITEM 17 WAS "FROM J104 PIN 2 SHD PIN A"	11-9-67		S.D.L		
	Q	ORIG. RELEASE FOR PROD.	11/16/67		Emf		
	A	REV. LEAD LENGTHS & BREAKOUTS	4/14/68	18852	Wes	HS	
	B	IT. 15 DELE. DELE NOTE FR IT. 32	3/21/72	20557	GE	EP	



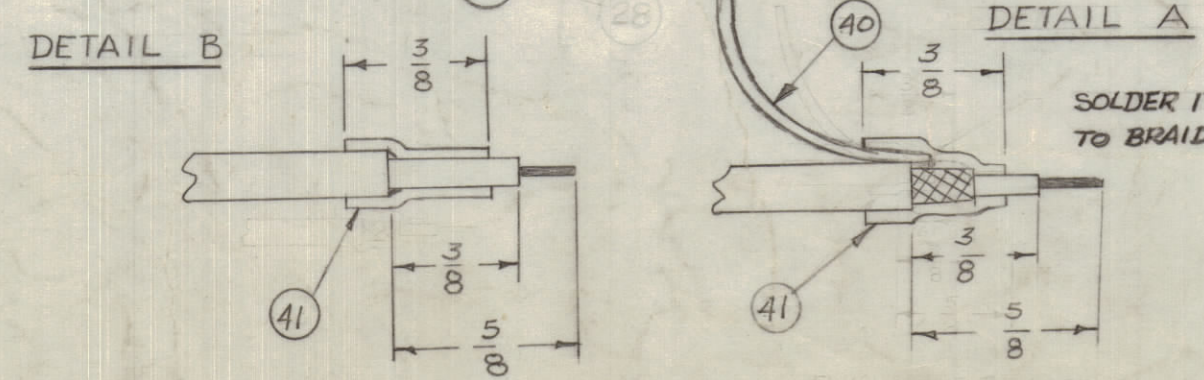
FINISH ALL ENDS AS PER DETAIL A UNLESS OTHERWISE SPECIFIED

- SYMBOL DENOTES
- = ITEMS NO'S
 - } = BREAKOUT
 - = CONNECTOR

UNLESS OTHERWISE SPECIFIED WIRES SHOULD BE PLACED IN CABLE IN NUMERICAL SEQUENCE AS THEY APPEAR IN ITEM COLUMN BY CATEGORY.

- ALL R.F. CABLES
- ALL SHIELDED CABLES
- ALL OTHERS

SPACE LACING APPROXIMATELY 3/4" APART.



THIS SYMBOL DENOTES END OF INSULATION AND NAIL DRIVING POINT. WIRE MUST BE STRIPPED 3/4" BEYOND THIS POINT AND TINNED 1/2" UNLESS OTHERWISE SPECIFIED.

QTY.	ITEM	PART NO.	DESCRIPTION	TO	SYMBOL
42	PL204		CONN. PL. RF, MIN		
X 41	PX830-12-1		INS SLVG ELEC, SHRINK		
X 40	LWC26(7)UO		WIRE ELEC, INS 4-1/2" LONG		
X 39	BS100		SOLDER, TIN ALLOY		
X 38	CD101-1MW		CORD, NYLON LACING		
7 10	37	RG174/U	J108 PIN 15 SHD PIN R	S110 PIN 1 SHD SEE CK1333	
5 10	36		S114C REAR CONT 7 SHD SEE CK1333	S110 PIN 2 SHD SEE CK1333	
5 7	35		S114C REAR CONT 8 SHD SEE CK1333	J108 PIN 13 SHD PIN R	
3 3	34		S106A FRONT CONT 1 SHD SEE CK1333	S107A FRONT CONT 2 GRD	
6 10	33		J115 PIN 8	J123 CENTER SHD GRD	
6 6	32		J112 10	J115 PIN 10 SHD PIN P	
7 3	31		J110 PIN N SHD PIN 15	S107A FRONT CONT 1 SHD GRD	
6 7	30		J110 R 15	J113 PIN R SHD PIN S	
6 7	29		J108 4 D	J112 PIN D SHD PIN E	
7 1	28		J107 E N	J118 SEE CK 1333	
6 8	27		J106 13 12	J112 PIN H SHD PIN K	
8 3	26		J106 H R	S105A FRONT CONT 1 SHD SEE CK1333	
8 4	25		J105 10 L	S104A 1 1	
8 4	24		J105 H E	S103A 1 1	
8 4	23		J104 PIN 10 SHD PIN L	S102A FRONT CONT 1 SHD SEE CK1333	
7 9	22		P305	J108 PIN 14 SHD PIN R	
9 10	21		J101 PIN A SHD PIN B	J120 CENTER SHD GROUND	
7 9	20		J101 13 12	J110 PIN 1 SHD PIN A	
8 9	19		J101 8 J	J113 K P	
8 9	18		J101 S 15	J104 K L	
7 8	17		J104 B A	J109 A B	
8 9	16		J101 3 B	J104 PIN B SHD PIN A	
	15	DELETED			
3 3	14	RG174/U	S106B FRONT CONT 1	S107A FRONT CONT 5	
7 9	13		J101 PIN 12 SHD PIN R	J110 PIN F SHD PIN H	
7 2	12		S115A REAR CONT 10	J109 8 13	
11 7	11		R102A SHD GROUND	J109 PIN N SHD PIN P	
5 11	10		S114C REAR CONT 6	R102A ARM GRD	
5 7	9		S114C 4	J107 PIN S SHD PIN R	
5 7	8		S114C 2	J109 14 P	
5 7	7		S114B 9	J109 J K	
5 7	6		S114B 8	J108 2 B	
5 7	5		S114A 10	J108 F K	
5 7	4			J107 A B	
5 7	3			J109 F E	
5 7	2			J107 K L	
5 7	1	RG174/U	S114A REAR CONT 1	J109 PIN 12 SHD PIN 13	

FROM	TO	QTY. REQ.	ITEM	PART NO.	DESCRIPTION	TO	SYMBOL
BREAKOUT							

O. POSE LIST OF MATERIAL

UNLESS OTHERWISE SPECIFIED DIMENSIONS ARE IN INCHES AND INCLUDE CHEMICALLY APPLIED OR PLATED FINISHES	FINAL APPROVAL <i>Emf</i> MECH. DES.	DATE 11/10/67
TOLERANCES ON DECIMALS .X ± .05 .XX ± .01 .XXX ± .005	ELECT. DES. <i>Kluger</i> CHECKED <i>JND</i> DRAWN <i>Emf</i>	DATE 11/7/67 DATE 11/10/67 DATE 9/19/67
MATERIAL	M.L. Allen 10/10/67	
FINISH		

THE TECHNICAL MATERIEL CORP. MAMARONECK, NEW YORK		
WIRING HARNESS, BRANCHED		
SIZE	CODE IDENT. NO.	DWG NO.
D	82679	CA 1367
SCALE	1:1	SHEET OF
		ISSUE B

1	MMX ()	ASS'Y NO.
QTY / UNIT	MODEL USED ON	
APPLICATION		
CODE	S401-451	
NOTICE TO PERSONS RECEIVING THIS DRAWING		
THE TECHNICAL MATERIEL CORPORATION claims proprietary right in the material disclosed herein. This drawing is issued in confidence for engineering information only and may not be reproduced or used to manufacture anything shown hereon without permission from THE TECHNICAL MATERIEL CORPORATION to the user. This drawing is loaned for mutual assistance and is subject to recall at any time.		

CA 1367

A