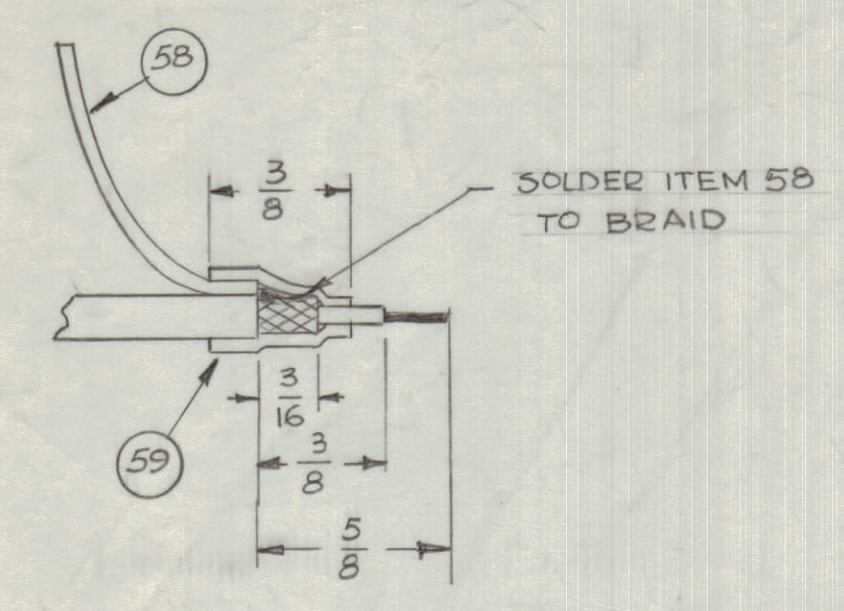


**NOTICE TO PERSONS RECEIVING THIS DRAWING**  
 THE TECHNICAL MATERIEL CORPORATION claims proprietary right in the material disclosed herein. This drawing is issued in confidence for engineering information only and may not be reproduced or used to manufacture anything shown herein without permission from THE TECHNICAL MATERIEL CORPORATION to the user. This drawing is loaned for mutual assistance and is subject to recall at any time.



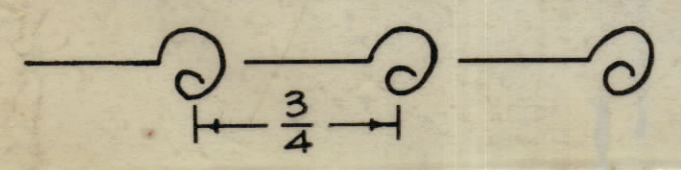
FINISH ALL ENDS AS SHOWN (104 ENDS)

TIE TOGETHER WITH 3 TURNS OF LACING CORD, ONLY AT POINTS INDICATED  
 DO NOT LACE TOGETHER TO FORM A RIGID CABLE

UNLESS OTHERWISE SPECIFIED WIRES SHOULD BE PLACED IN CABLE IN NUMERICAL SEQUENCE AS THEY APPEAR IN ITEM COLUMN BY CATEGORY.

1. ALL R.F. CABLES
2. ALL SHIELDED CABLES
3. ALL OTHERS

SPACE LACING APPROXIMATELY 3/4" APART.

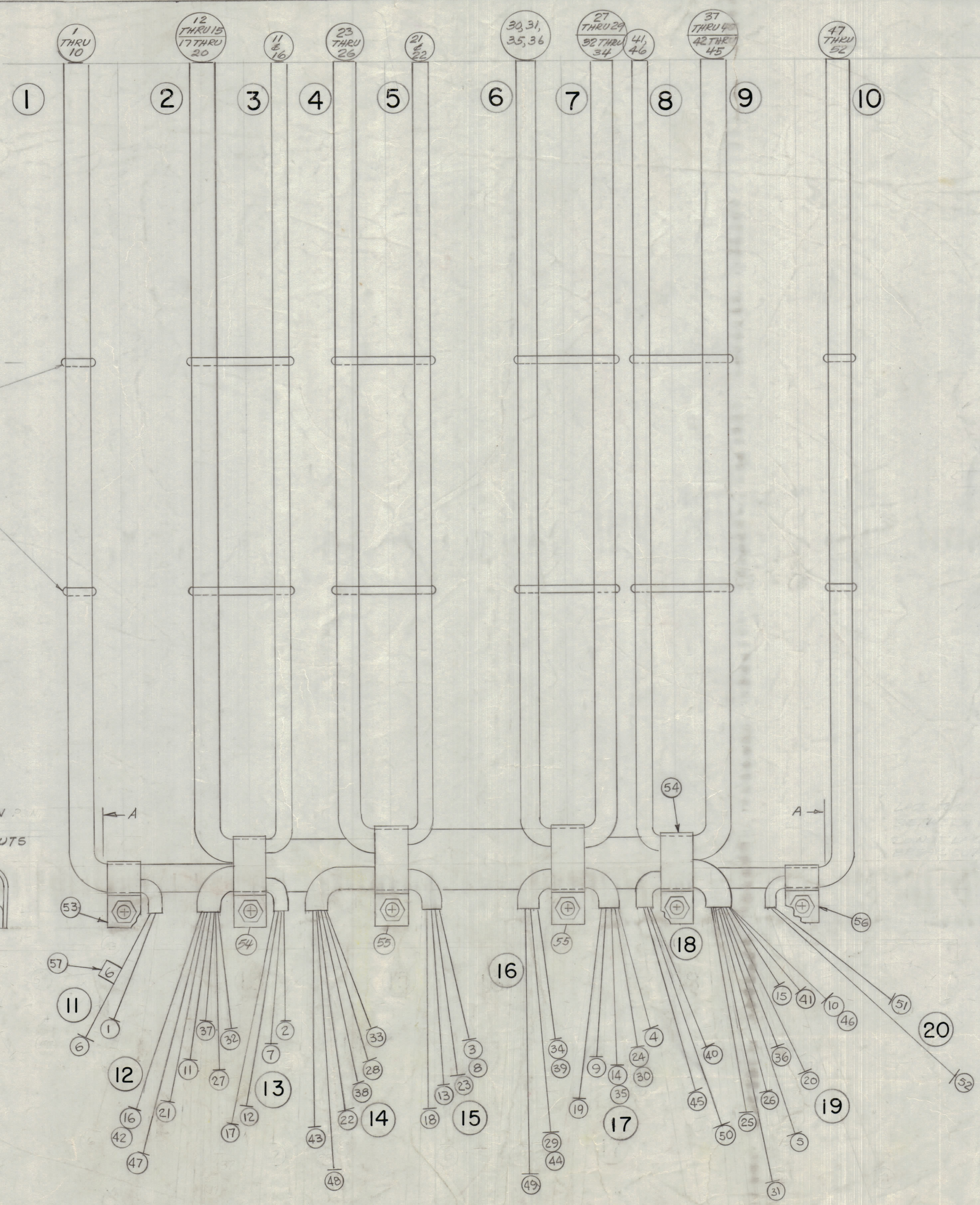


THIS SYMBOL DENOTES END OF INSULATION AND NAIL DRIVING POINT. WIRE MUST BE STRIPPED 3/4" BEYOND THIS POINT AND TINNED 1/2" UNLESS OTHERWISE SPECIFIED.

LACE TOGETHER BETWEEN POINTS A-A- DO NOT LACE BREAK OUTS

AT COMPLETION OF CABLE TURN CABLE CLAMPS AS SHOWN ON SIDE VIEW

NOTE: USE LABELS LA 101 AT TWO ENDS OF WIRE 1 1/2" FROM ENDS TYP



QTY.	REQ.	ITEM	PART NO.	FROM	DESCRIPTION	TO	SYMBOL
X	61	BS100			SOLDER, TIN ALLOY		
X	60	CD101-1MW			CORD, NYLON, LACING		
104	59	PX830-12-1			INS. SLVG SHRINK (3/8" LONG EACH)		
104	58	LWC26(7)UO			WIRE, ELECT INS. (4 1/2" LONG EACH)		
2 EA	57	LA101			BAND, MARKER CABLE(NO'S 1 THRU 52)		
1	56	CU102-4			CLAMP, LOOP		
2	55	CU102-12					
2	54	CU102-10					
1	53	CU102-5			CLAMP, LOOP		
10	20	52	RG174/U		TB102, R130		S106A PIN 4
10	20	51			R132		S106A 6
10	18	50			R133		S105A 3
10	16	49			R134		S104A 3
10	14	48			R135		S103A 3
10	12	47			R136		S102A 3
8	19	46			R138		S106A 8
9	18	45			R139		S105A 5
9	16	44			R140		S104A 5
9	14	43			R141		S103A 5
9	12	42			R142		S102A 5
8	19	41			R144		S106A 10
9	18	40			R145		S105A 7
9	16	39			R146		S104A 7
9	14	38			R147		S103A 7
9	12	37			R148		S102A 7
6	19	36			R150		S106B 2
6	17	35			R151		S105A 9
7	16	34			R152		S104A 9
7	14	33			R153		S103A 9
7	12	32			R154		S102A 9
6	19	31			R156		S106B 4
6	17	30			R157		S105A 11
7	16	29			R158		S104A 11
7	14	28			R159		S103A 11
7	12	27			TB102, R160		S102A 11
4	19	26			TB101, R162		S106A 3
4	19	25			R164		S106A 5
4	17	24			R165		S105A 2
4	15	23			R166		S104A 2
5	14	22			R167		S103A 2
5	12	21			R168		S102A 2
2	19	20			R170		S106A 7
2	17	19			R171		S105A 4
2	15	18			R172		S104A 4
2	13	17			R173		S103A 4
3	12	16			R174		S102A 4
2	19	15			R176		S106A 9
2	17	14			R177		S105A 6
2	15	13			R178		S104A 6
2	13	12			R179		S103A 6
3	12	11			R180		S102A 6
1	19	10			R182		S106A 11
1	17	9			R183		S105A 8
1	15	8			R184		S104A 8
1	13	7			R185		S103A 8
1	11	6			R186		S102A 8
1	19	5			R188		S106B 3
1	17	4			R189		S105A 10
1	15	3			R190		S104A 10
1	13	2			TB101, R191		S103A 10
1	11	1			TB101, R192		S102A PIN 10

FROM TO QTY. REQ. ITEM PART NO. FROM DESCRIPTION TO SYMBOL

BREAKOUT 1 RG174/U TB101, R192 S102A PIN 10

O. POSE LIST OF MATERIAL

FINAL APPROVAL DATE 8-20-67  
 MECH. DES. DATE  
 ELECT. DES. DATE 8/30/67  
 CHECKED DATE 8/30/67  
 DRAWN DATE 8-10-67  
 HL akler 8/31/67

THE TECHNICAL MATERIEL CORP.  
 MAMARONECK, NEW YORK

RF CABLE LAYOUT  
 MMX-( )

SIZE CODE IDENT. NO. DWG NO. ISSUE  
 82679 CA 1364 A

SCALE 1:1 SHEET

ZONE	LTR	DESCRIPTION	DATE	E.M.N.	DRAFT	CHKD	APPD
A		BUILDUP CLARIFIED ON BREAKOUTS NO 11 THRU 20 ALL LEAD LENGTHS MODIFIED	11-29-67	18626	GDL		
X		ORIGINAL RELEASE FOR PROD	8/30/67				
X		EXP. RELEASE	8-10-67				