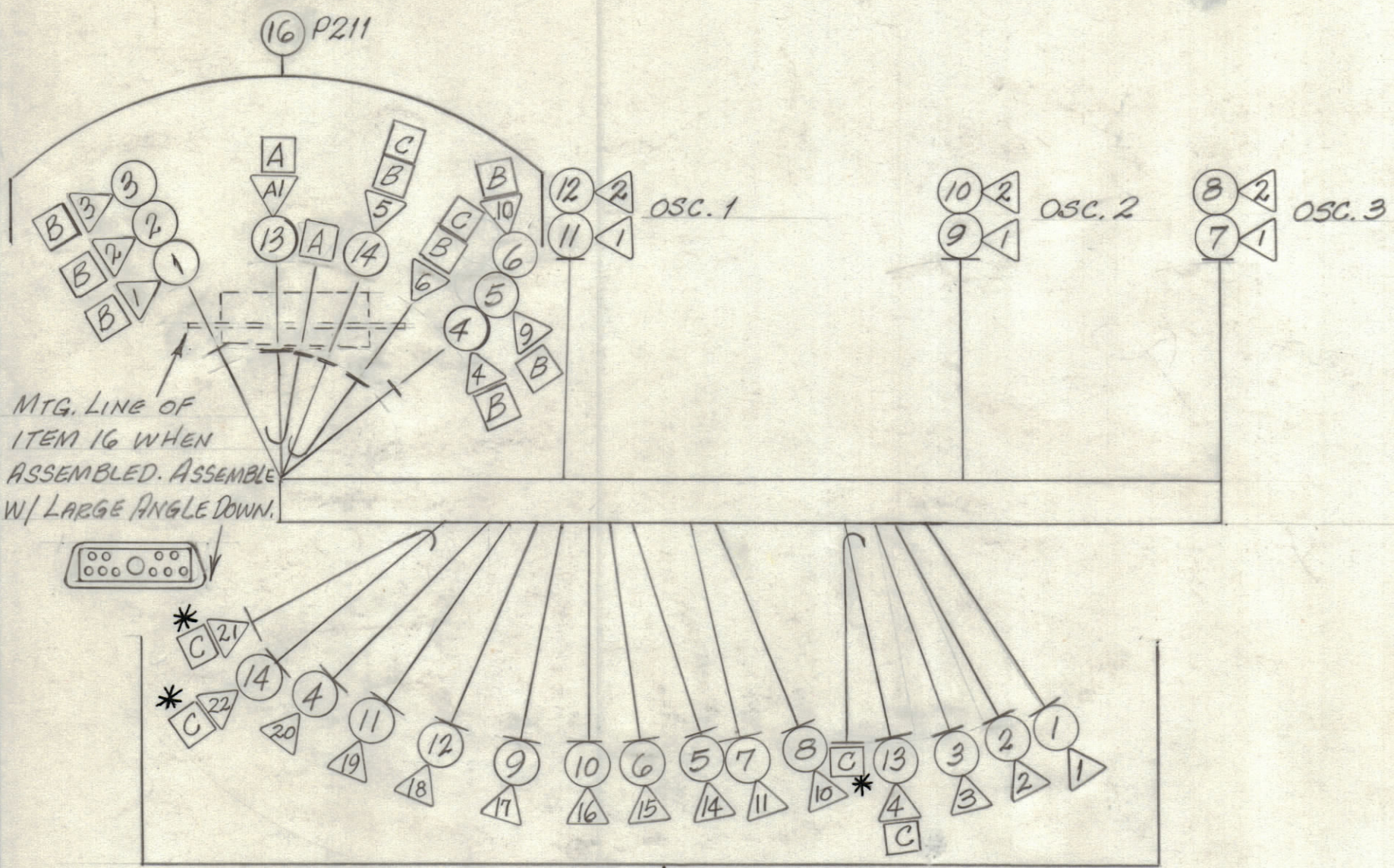
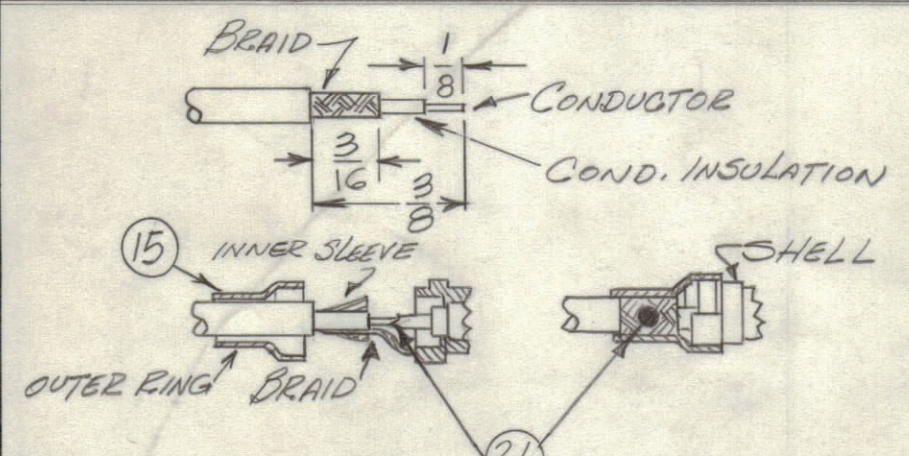


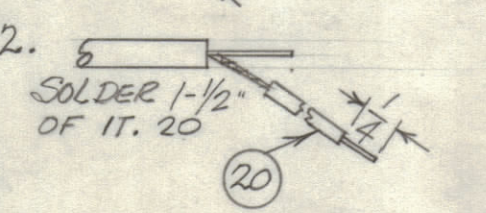
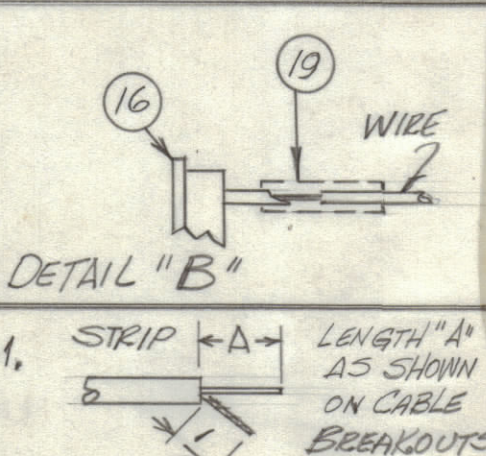
REVISIONS						
ZONE	LTR	DESCRIPTION	DATE	E.M.N.NO	DRAFT	CHKD APPD
X	2	REV. & REDRAWN (WAS "2" SIZE)	9-12-67	-	HLL	[Signature]
Ø		ORIGINAL RELEASE FOR PROD.	9-25-67	Ø	R.G.	[Signature]



\* NOTE: STRIP INSULATION AT BREAKOUT THEN PROCEED AS DETAIL "C"



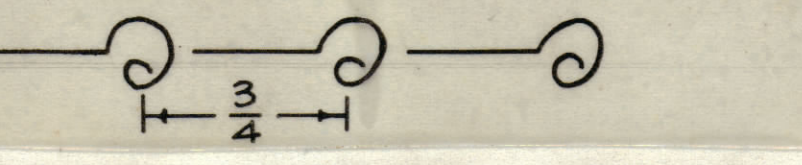
1. SLIDE OUTER RING OVER CABLE JACKET, TRIM CABLE AS SHOWN. INSERT CABLE DIELECTRIC AND CENTER CONDUCTOR INTO INSIDE DIAMETER OF INNER SLEEVE, SOLDER CENTER CONDUCTOR TO COAXIAL CENTER CONTACT.
2. SLIDE OUTER RING FORWARD UNTIL FLUSH WITH COAXIAL SHELL, CONFINING BRAID BETWEEN OUTER RING AND INNER SLEEVE. SOFT SOLDER OUTER RING TO ASSEMBLY THROUGH CROSS-DRILLED SOLDER HOLE.



UNLESS OTHERWISE SPECIFIED WIRES SHOULD BE PLACED IN CABLE IN NUMERICAL SEQUENCE AS THEY APPEAR IN ITEM COLUMN BY CATEGORY

1. ALL R.F. CABLES
2. ALL SHIELDED CABLES
3. ALL OTHERS

SPACE LACING APPROXIMATELY 3/4" APART.



THIS SYMBOL DENOTES END OF INSULATION AND NAIL DRIVING POINT. WIRE MUST BE STRIPPED 3/4" BEYOND THIS POINT AND TINNED 1/2" UNLESS OTHERWISE SPECIFIED.

- = ITEM NUMBERS
- △ = PIN NUMBERS
- = DETAILS
- = DENOTES

QTY. REQ.	ITEM	PART NO.	FROM	DESCRIPTION	TO	SYMBOL
X	21	BS100		SOLDER, TIN ALLOY		
X	20	MWC22(7)U0		WIRE, ELEC., INS.		
X	19	PX100-1-042		INSULATION SLEEVING, SIZE 18		
X	18	PX830-12-1		INSULATION SLEEVING, SHRINK		
X	17	CD101-1MW		CORD, NYLON LACING		
1	16	JJ321-11P		PLUG, MALE 11 PIN		
1	15	PN120-2 (P/O IT.16)		PIN, CONTACT, ELEC COAXIAL		
	14	SHIELD RG174/U	J206 PIN 21		P211 PIN 6	
			J206 PIN 22		PIN 5	
	13	SHIELD RG174/U	GRD LUG (CHASSIS)		AI GRD	
			J206 PIN 4		P211 PIN AI	
	12	LWC26(7)U26			OSC 1	
	11		24		1	
	10		92		2	
	9		94		2	
	8		96		3	
	7		97		OSC 3	
	6		51		P211	
	5		59		14	
	4		54		20	
	3		53		3	
	2		32		2	
	1	LWC26(7)U50		J206 PIN 1	P211 PIN 1	

MARTINENGO LIST OF MATERIAL

UNLESS OTHERWISE SPECIFIED DIMENSIONS ARE IN INCHES AND INCLUDE CHEMICALLY APPLIED OR PLATED FINISHES		
TOLERANCES ON		
DECIMALS	FRACTIONS	
.X ± .05	± 1/64	
.XX ± .01	ANGLES	
.XXX ± .005	± 0° -30'	
1	VLC-1	A4605
QTY / UNIT	MODEL USED ON	ASS'Y NO.
	APPLICATION	
	CODE	3401-451
	A	
NOTICE TO PERSONS RECEIVING THIS DRAWING		
THE TECHNICAL MATERIEL CORPORATION claims proprietary right in the material disclosed hereon. This drawing is issued in confidence for engineering information only and may not be reproduced or used to manufacture anything shown hereon without permission from THE TECHNICAL MATERIEL CORPORATION to the user. This drawing is loaned for mutual assistance and is subject to recall at any time.		

FINAL APPROVAL	DATE
[Signature]	9-25-67
MECH. DES.	DATE
[Signature]	9-22-67
ELECT. DES.	DATE
CHECKED	DATE
[Signature]	9-22-67
DRAWN	DATE
H. DUSTIN	9-12-67
M/L W.F.	9-25-67

THE TECHNICAL MATERIEL CORP. MAMARONECK, NEW YORK			
WIRING HARNESS, BRANCHED (OSC.)			
SIZE	CODE IDENT.NO.	DWG NO.	ISSUE
C	82679	CA1347	Ø
SCALE	1:1		SHEET OF