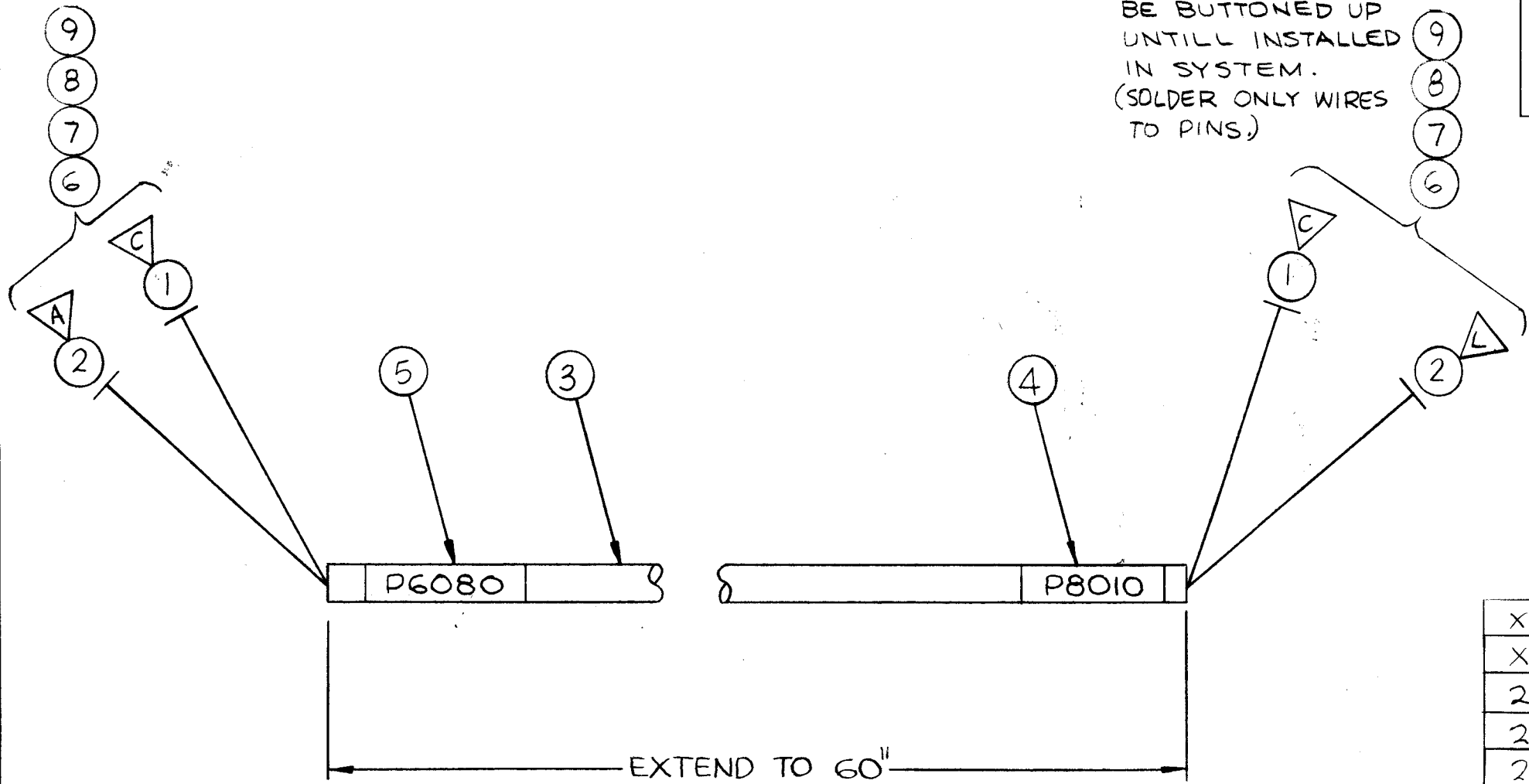


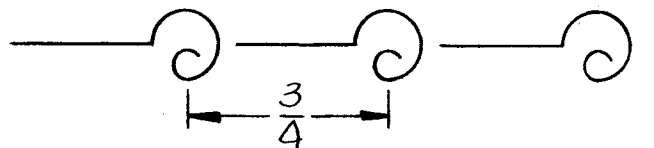
REVISIONS						
ZONE	LTR	DESCRIPTION	DATE	E.M.N.NO	DRAFT	CHKD APPD
	X	EXPERIMENTAL RELEASE	5.18.67		WHD	WHD
	Ø	ORIGINAL RELEASE FOR PRO	5-24-67		L.A.K	WHD

THIS SIDE ONLY:  
ITEM 6 IS NOT TO  
BE BUTTONED UP  
UNTILL INSTALLED  
IN SYSTEM.  
(SOLDER ONLY WIRES  
TO PINS.)

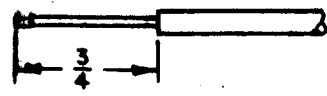


UNLESS OTHERWISE SPECIFIED:  
WIRES SHOULD BE PLACED IN  
CABLE IN NUMERICAL SEQUENCE.  
SPACE LACING APPROX  $\frac{3}{4}$  APART.

**SYMBOLS**  
 ○ ~ DENOTES ITEM NO'S  
 △ ~ DENOTES PIN NO'S



THIS SYMBOL DENOTES END OF INSULATION  
AND NAIL DRIVING POINT. WIRE MUST BE  
STRIPPED  $\frac{3}{4}$ " BEYOND THIS POINT AND  
TINNED  $\frac{1}{2}$ " UNLESS OTHERWISE SPECIFIED.



REQ'D	ITEM	PART NUMBER	FROM DESCRIPTION	TO	SYM.
X	11	BS100	SOLDER, TIN ALLOY		
X	10	CD101-1MW	CORD NYLON LACING		
2	9	MS3420-12A	BUSHING, RUBBER		
2	8	MS3420-8A	BUSHING, RUBBER		
2	7	MS3420-6A	BUSHING, RUBBER		
2	6	PL212-1	CONN, PLUG		
1	5	LA107-12-P6080	SLV, MARKER, CABLE SPLIT		
1	4	LA107-12-P8010	SLV, MARKER, CABLE SPLIT		
X	3	PX100-1-148	INS, SLVG, ELEC.		
	2	MWC20(7)U92	P6080 PIN-A	P8010 PIN L	
	1	MWC20(7)U2	P6080 PIN C	P8010 PIN C	

M. STURMER LIST OF MATERIAL

THE TECHNICAL MATERIEL CORP.  
MAMARONECK, NEW YORK

WIRING HARNESS-BRNCHD

SIZE	CODE IDENT. NO.	DWG NO.	ISSUE
B	82679	CA1345	Ø
SCALE	SHEET		OF

1	MSG-3I	
QTY / UNIT	MODEL USED ON	ASS'Y NO.
APPLICATION		
S401-451	CODE A	
NOTICE TO PERSONS RECEIVING THIS DRAWING THE TECHNICAL MATERIEL CORPORATION claims proprietary right in the material disclosed hereon. This drawing is issued in confidence for engineering information only and may not be reproduced or used to manufacture anything shown hereon without permission from THE TECHNICAL MATERIEL CORPORATION to the user. This drawing is loaned for mutual assistance and is subject to recall at any time.		

UNLESS OTHERWISE SPECIFIED DIMENSIONS ARE IN INCHES AND INCLUDE CHEMICALLY APPLIED OR PLATED FINISHES	FINAL APPR. <i>[Signature]</i>	DATE 5/24/67
MECH. DES.	ELECT. DES. <i>[Signature]</i>	DATE 5-24-67
DECIMALS .X ± .05 FRACTIONS 1/64 TOLS. ANGLES 0°-30'	CHECKED <i>[Signature]</i>	DATE 5-22-67
MATERIAL	DRAWN <i>[Signature]</i>	DATE 5.17.67
FINISH	M/L Allen	5/24/67