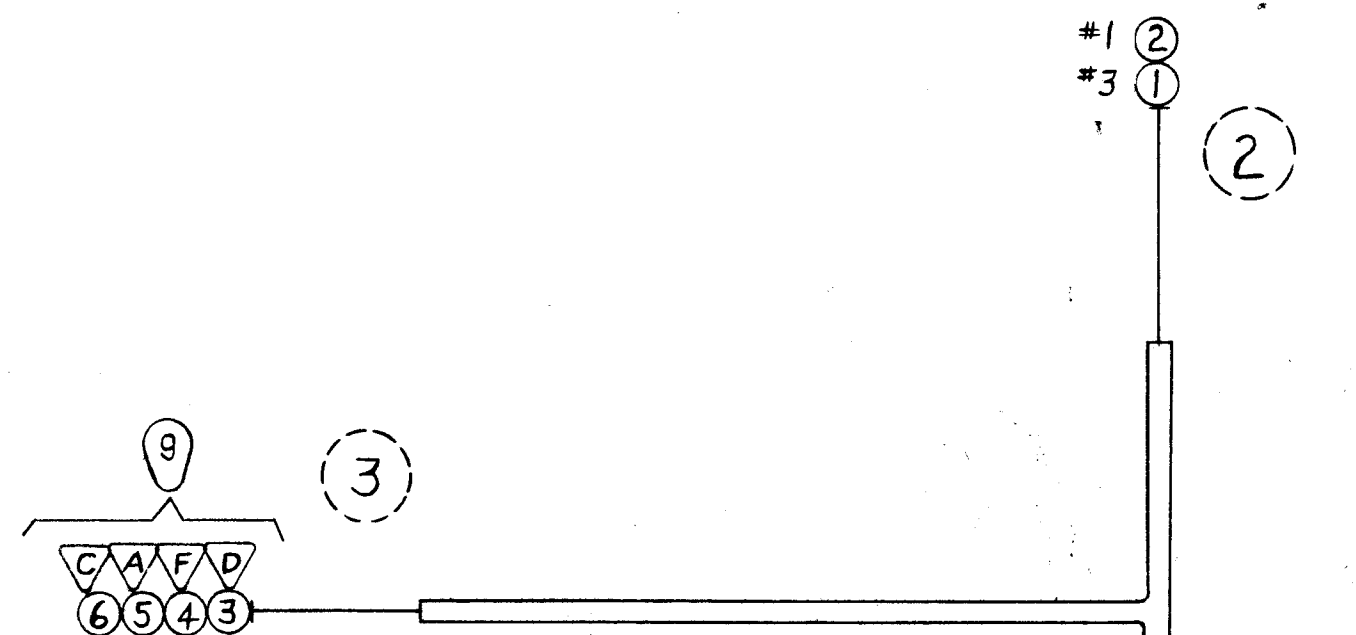
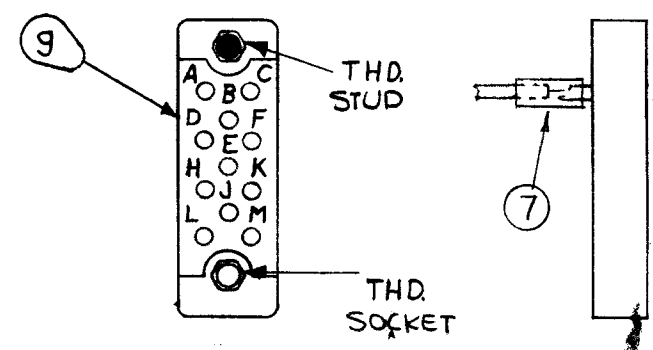


REVISIONS						
ZONE	LTR	DESCRIPTION	DATE	E.M.N.NO	DRAFT	CHKD APPD
	X	EXPERIMENTAL RELEASE	5-1-64		L.A.K.	<i>[Signature]</i>
	Ø	ORIG. REL. FOR PROD.	5-5-67	Ø	R.G.	



**SYMBOL-DENOTES**

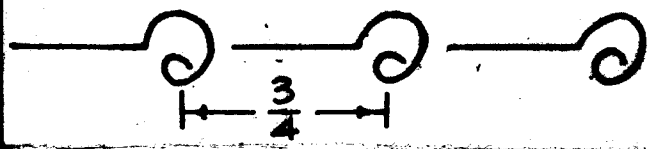
- BREAKOUTS
- = ITEM NO'S
- = PINS
- =CONNECTORS



UNLESS OTHERWISE SPECIFIED  
**WIRES SHOULD BE PLACED IN CABLE IN NUMERICAL SEQUENCE AS THEY APPEAR IN ITEM COLUMN BY CATEGORY.**

1. ALL R.F. CABLES
2. ALL SHIELDED CABLES
3. ALL OTHERS

SPACE LACING, APPROXIMATELY 3/4" APART.



**THIS SYMBOL DENOTES END OF INSULATION AND NAIL DRIVING POINT. WIRE MUST BE STRIPPED 3/4" BEYOND THIS POINT AND TINNED 1/2" UNLESS OTHERWISE SPECIFIED.**

FROM	TO	REQ'D	ITEM	PART NUMBER	FROM	TO	SYM.
		X	10	BS100	SOLDER, TIN, ALY		
		I	9	PL 247-1P	CONN, PL, ML		
		X	8	CD101-1M,W	CD, NYLON, LACING		
		X	7	PXB30-22-1	INS, SLVG, ELEC. SHRINK		BLK
3	1		6	MWC24(7)U7	PI-PIN C	A4484-TERM#6	
↑	↑		5		6	A	#5
↓	↓		4		9	F	#4
3			3		5	PI-PIN D	#3
2	↓		2		2	TBI-TERM#1	#2
2	1		1	MWC 24(7) U 0	TBI-TERM#3	A4484-TERM#1	

**BREAKOUTS FEATON LIST OF MATERIAL**

1	AK102A	
QTY / UNIT	MODEL USED ON	ASS'Y NO.
APPLICATION		
S401-451	CODE A	

**NOTICE TO PERSONS RECEIVING THIS DRAWING**  
 THE TECHNICAL MATERIEL CORPORATION claims proprietary right in the material disclosed hereon. This drawing is issued in confidence for engineering information only and may not be reproduced or used to manufacture anything shown hereon without permission from THE TECHNICAL MATERIEL CORPORATION to the user. This drawing is loaned for mutual assistance and is subject to recall at any time.

UNLESS OTHERWISE SPECIFIED DIMENSIONS ARE IN INCHES AND INCLUDE CHEMICALLY APPLIED OR PLATED FINISHES		FINAL APPROVAL <i>[Signature]</i> DATE 5/9/67
DECIMALS .X ± .05 .XX ± .01 .XXX ± .005	FRACTIONS 1/64 ANGLES 0°-30'	MECH. DES. <i>[Signature]</i> DATE 5/4/67
MATERIAL		ELECT. DES. <i>[Signature]</i> DATE 5-3-67
FINISH		CHECKED <i>[Signature]</i> DATE 5-1-64
		DRAWN L.KOLIBABEK

THE TECHNICAL MATERIEL CORP. MAMARONECK, NEW YORK			
CABLE, ELECTRICAL			
SIZE B	CODE IDENT. NO. 82679	DWG NO. CA1340	ISSUE Ø
SCALE 1:1		SHEET OF	