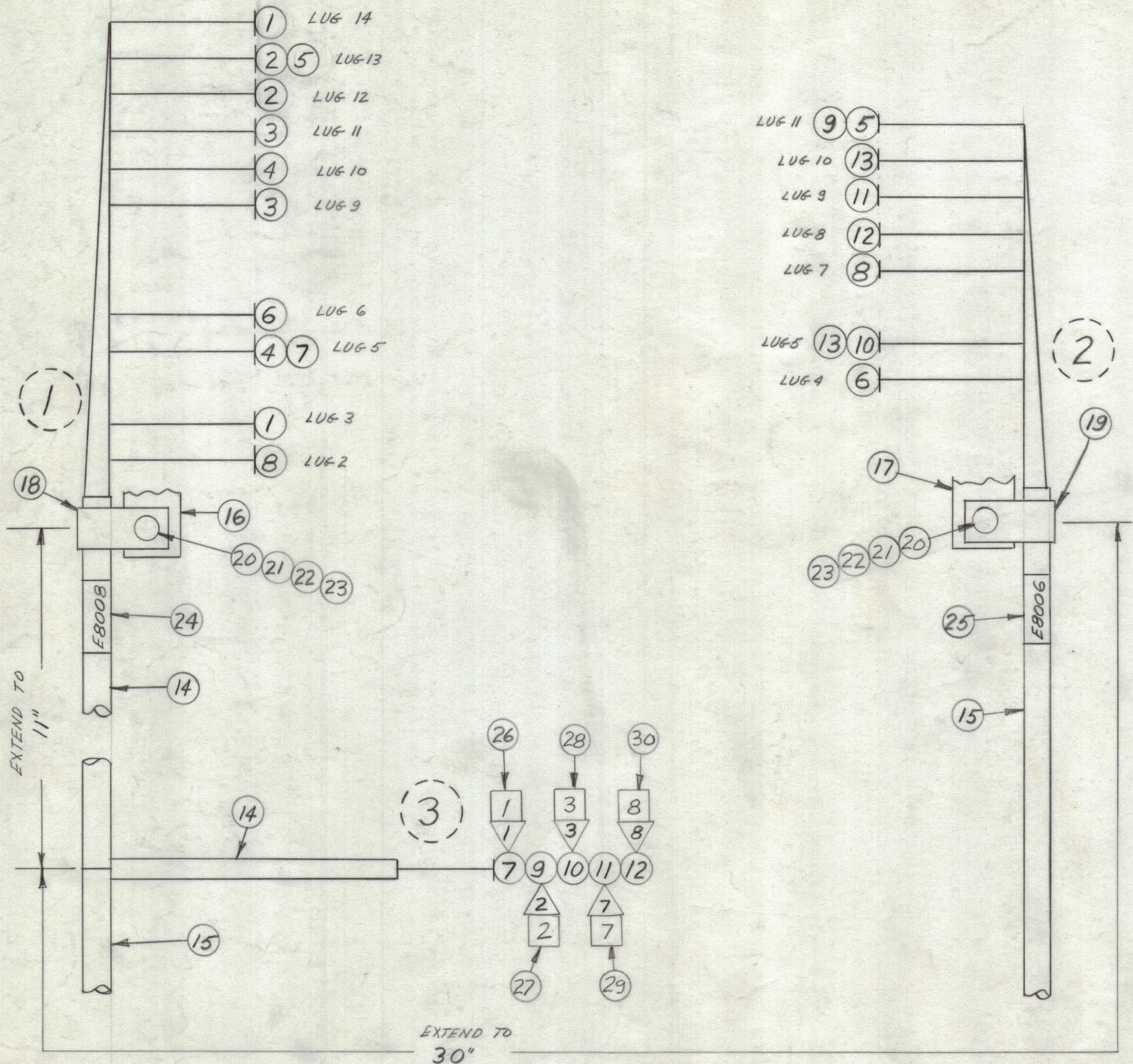


REVISIONS							
ZONE	SYM	DESCRIPTION	DATE	E.M.N. NO.	DRAFT	CHKD	APPD
A		REV. & REDRAWN (WAS "2" SIZE)	5-2-67	18159	HEP	MB	FB



QTY	UNIT	REQ'D.	ITEM	PART NUMBER	DESCRIPTION	FROM	TO	SYMBOL
X	33		TA101-1		INS, TAPE, EL-GL 1/4 W			
X	32		CD101-1MW		CORD, NYLON LACING			
X	31		BS100		SOLDER, TIN ALLOY			
I	30		LA101-8		BAND, MKR, CBL NO 8			
I	29		LA101-7		BAND, MKR, CBL NO 7			
I	28		↑-3		↑		3	
I	27		↓-2		↓		2	
I	26		LA101-1		BAND, MKR, CBL NO 1			
I	25		LA107-13-E8006		SLV, MKR, CBL			
I	24		LA107-12-E8008		SLV, MKR, CBL			
2	23		NTH0632BN8		NUT, PLAIN HEX			
2	22		LWEO6MRN		WASH, LK, EXT			
2	21		FWO6HBN		WASH, FLAT			
2	20		SCBP0632BN6		SCREW, MACH			
I	19		CUI02-3		CLP, LOOP			
I	18		CUI02-2		CLP, LOOP			
I	17		TMI05-11AL		TERM BD, FNG			
I	16		TMI05-14AR		TERM BD, FNG			
			15	PX100-1-264	INS, SLVG, BLK			
			14	PX100-1-208	INS, SLVG, BLK			
2	2		13	MWC22(7)U0	E8006-10 LUG 10	E8006-5	LUG 5	
3	2		12	MWC22(7)U7	XK8001 PIN 8	E8006-8	↑ 8	
3	2		11	↑ 92	↑ 7	E8006-9	↑ 9	
3	2		10	0	↓ 3	E8006-5	↓ 5	
3	2		9	2	XK8001 PIN 2	E8006-11	↓ 11	
I	2		8	8	E8008-13 LUG 2	E8006-7	LUG 7	
I	3		7	4	E8008-10 ↑ 5	XK8001	PIN 1	
I	2		6	6	E8008-9 ↑ 6	E8006-4	LUG 4	
I	2		5	2	E8008-2 ↑ 13	E8006-11	↑ 11	
I	1		4	4	E8008-5 ↑ 10	E8008-10	↑ 5	
I	1		3	3	E8008-4 ↑ 11	E8008-6	↑ 9	
I	1		2	↓ 2	E8008-2 ↓ 13	E8008-3	↓ 12	
I	1		1	MWC22(7)U1	E8008-1 LUG 14	E8008-12	LUG 3	

CA1331 A

THIS SYMBOL DENOTES END OF INSULATION AND NAIL DRIVING POINT. WIRE MUST BE STRIPPED 3/4" BEYOND THIS POINT AND TINNED 1/2" UNLESS OTHERWISE SPECIFIED.

SYMBOL = DENOTES

- = ITEM NO.'S.
- = TAGS
- (dashed) = BREAKOUTS
- ◇ = LUGS

UNLESS OTHERWISE SPECIFIED WIRES SHOULD BE PLACED IN CABLE IN NUMERICAL SEQUENCE AS THEY APPEAR IN ITEM COLUMN BY CATEGORY.

- ALL R.F. CABLES
- ALL SHIELDED CABLES
- ALL OTHERS

SPACE LACING APPROXIMATELY 3/4" APART.

GPTR-2.5EE		KIT-334	
QTY/UNIT	MODEL USED ON	ASS'Y. NO.	
SCALE 1:1	CODE A	S401-451	

THE CONTENTS OF THIS DRAWING ARE THE EXCLUSIVE PROPERTY OF THE TECHNICAL MATERIEL CORP. ITS UNAUTHORIZED USE OR REPRODUCTION IN WHOLE OR IN PART IS STRICTLY FORBIDDEN.

MATERIAL		THE TECHNICAL MATERIEL CORP.	
FINISH		MAMARONECK, NEW YORK	
UNLESS OTHERWISE SPECIFIED DIMENSIONS ARE IN INCHES AND INCLUDE CHEMICALLY APPLIED OR PLATED FINISHES		TITLE	
		CABLE, SPECIAL PURPOSE	
DRAWN	B.N.	DATE	5-2-67
CHECKED	[Signature]	DATE	5-4-67
ELECT. DES.	[Signature]	DATE	5-4-67
MECH. DES.	[Signature]	DATE	
DECIMALS .X ± .05 .XX ± .01 .XXX ± .005		FRACTIONS ± 1/64 ANGLES ± 0° 30'	
TOLERANCES		FINAL APPROVAL	
		[Signature]	
		DATE	
		5/5/67	
		SHEET	
		CA1331 A	
		REV. LTR.	

NOTES