

REVISIONS						
ZONE	LTR	DESCRIPTION	DATE	E.M.N. NO.	DRAFT	CHKD APPD
	X	EXP. RELEASE	8.26.68	11		
	Ø	ORIG. RELEASE	12.4.68			
	A	REV & UPDATED	1.16.69	19212	72	

UNLESS OTHERWISE SPECIFIED WIRES SHOULD BE PLACED IN CABLE IN NUMERICAL SEQUENCE AS THEY APPEAR IN ITEM COLUMN BY CATEGORY.

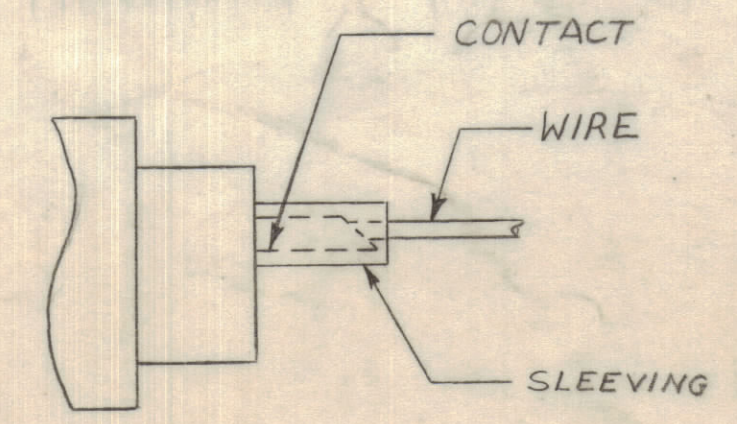
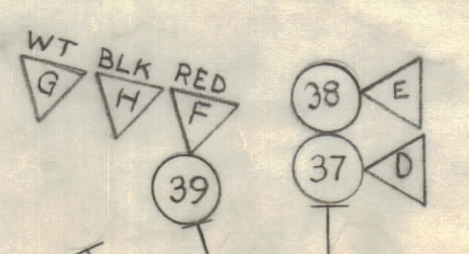
- ALL R.F. CABLES
- ALL SHIELDED CABLES
- ALL OTHERS

SPACE LACING APPROXIMATELY 3/4" APART.

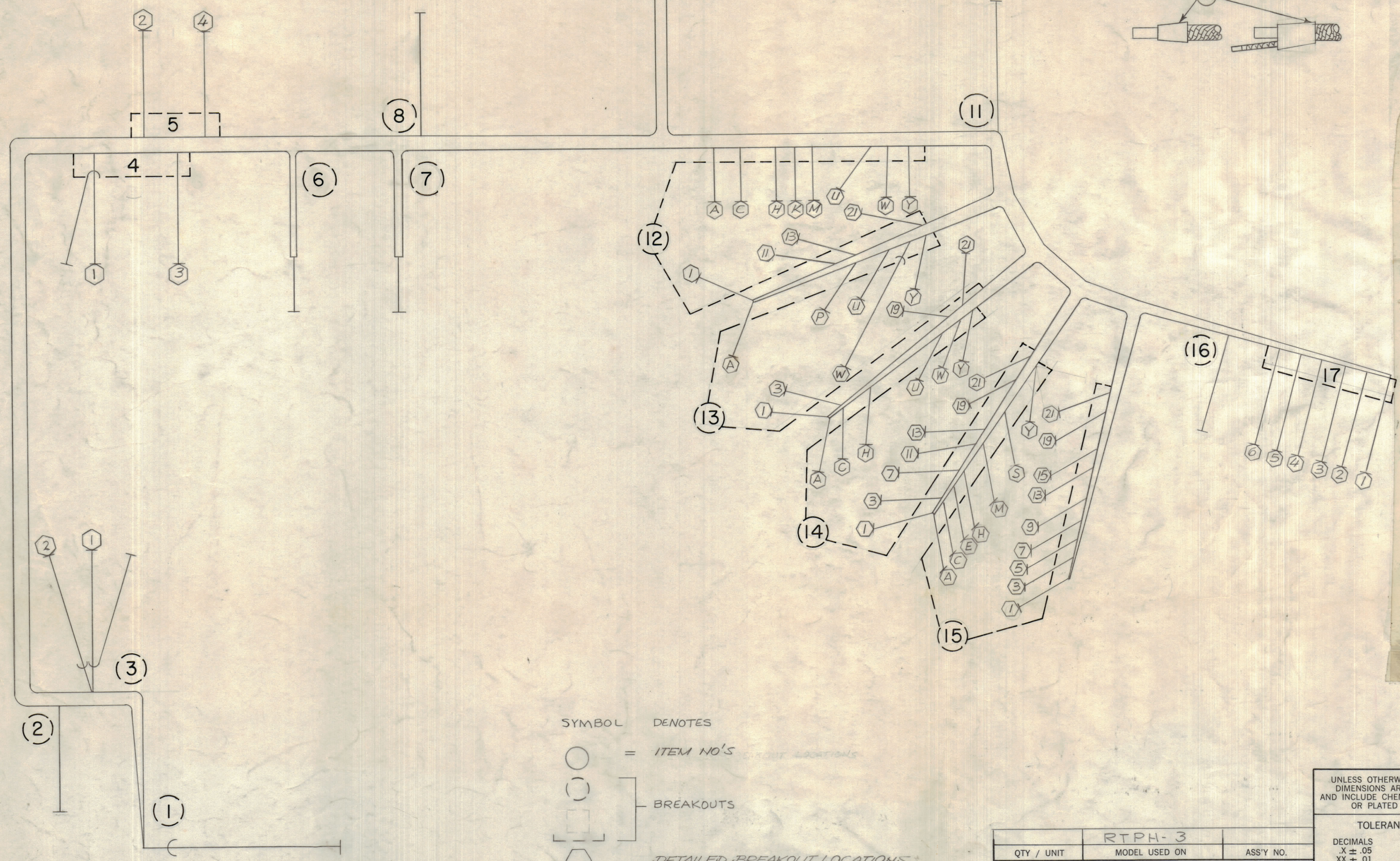
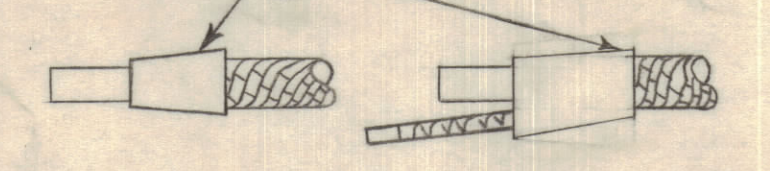
THIS SYMBOL DENOTES END OF INSULATION AND NAIL DRIVING POINT. WIRE MUST BE STRIPPED 3/4" BEYOND THIS POINT AND TINNED 1/2" UNLESS OTHERWISE SPECIFIED.

THIS SYMBOL INDICATES END OF SHIELDING.

THE ABOVE SYMBOL DENOTES END OF SHIELD, WHICH SHOULD BE TERMINATED AS SHOWN, LEAVING EXCESS SHIELDING AS A PIGTAIL. TIN PIGTAIL 1/4 INCH.



NOTE: TERMINATE JACKETS OF ITEMS (19) (20) (21) (39) WITH ITEM (55)



SYMBOL DENOTES

- = ITEM NO'S
- (with dashed line) = BREAKOUTS
- (with solid line) = DETAILED BREAKOUT LOCATIONS
- △ = CONNECTOR PIN NO'S

RTPH-3		
QTY / UNIT	MODEL USED ON	ASS'Y NO.
APPLICATION		
CODE		
NOTICE TO PERSONS RECEIVING THIS DRAWING		
THE TECHNICAL MATERIEL CORPORATION claims proprietary right in the material disclosed hereon. This drawing is issued in confidence for engineering information only and may not be reproduced or used to manufacture anything shown hereon without permission from THE TECHNICAL MATERIEL CORPORATION to the user. This drawing is loaned for mutual assistance and is subject to recall at any time.		

UNLESS OTHERWISE SPECIFIED DIMENSIONS ARE IN INCHES AND INCLUDE CHEMICALLY APPLIED OR PLATED FINISHES

TOLERANCES ON

DECIMALS	FRACTIONS
.X ± .05	± 1/64
.XX ± .01	ANGLES
.XXX ± .005	± 0° - 30'

QTY. REQ.	ITEM	PART NO.	DESCRIPTION	SYMBOL
LIST OF MATERIAL				
THE TECHNICAL MATERIEL CORP. MAMARONECK, NEW YORK				
WIRING HARNESS BRANCHED				
SIZE		CODE	IDENT. NO.	DWG. NO.
D		82679	CA1324	A
SCALE				SHEET OF



RTPH-3 CLASS II

REQ	ITEM	PART NUMBER	BREAKOUT		DESTINATION OR DESCRIPTION			
			FROM	TO	FROM	TO		
	1	MWC24 (7) U0 U4 U5 U6 U4 U94 U7 U92 U2 U2 U1 U91 U0 U0 U6 U0 U4 U4 MWC24 (7) U94 WI142-5(0-2) WI142-5(0-2) WI142-5(0-2) MWC24 (7) U0 U1 U2 U3 U4 U5 U6 U9 U8 U3 U5 U7 U1 U92 U4 U4 MWC24 (7) U94 WI142-3(2-9-0)	12-21	11	A1	PIN 22	GRD	PIN E
	2		12-11	8	A1	12	Q1	PIN B
	3		12-21	8	A1	21	Q1	PIN C
	4		12-13	8	A1	14	Q1	TERM 9
	5		12-M	5-2	A1	N	T1	TERM 10
	6		12-N	5-2	A1	U	T1	
	7		12-W	7	A1	W	T1	
	8		12-K	14-U	A1	L	C2 (-)	PIN U
	9		12-H	13-19	A1	H	A3	PIN 20
	10		12-C	6	A1	D	A2	
	11		12-A	4-3	A1	B	C1 (+)	
	12		12-1	4-3	A1	2	T1	TERM 5
	13		12-1	6	A1	1	T1	TERM 6
	14		12-1	11	A1	1	C1 (-)	
	15		12-13	7	A1	1	GRD	
	16		5-4	6	GRD	14	C2 (+)	
	17		2	5-2	DS1		C1 (-)	
	18		2	5-2	DS1		T1	TERM 9
	19		10	1	FL 1 & 2		T1	TERM 10
	20		1	3-1	FL 1 & 2		F 1 & 2	
	21		4-1	3-2	F1 1 & 2		S1	
	22		16	3-2	T1	1 & 4	S1	
	23		15-C	17-6	GRD		TB1	TERM 6
	24		15-13	17-1	A4	PIN C	1	1
	25		15-9	17-2	A4	13	2	2
	26		15-5	17-3	A4	9	3	3
	27		15-1	17-4	A4	6	4	4
	28		15-E	17-5	A4	2	5	5
	29		15-9	14-A	A4	F	TERM PIN	
	30		15-15	14-H	A4	10	PIN B	
	31		15-A	14-7	A2	16	H	
	32		15-7	14-11	A2	B	8	
	33		15-M	14-13	A2	16	12	
	34		15-H	14-C	A2	8	13	
	35		15-S	14-W	A2	M	C	
	36		13-U	14-U	A2	H	W	
	37		13-P	14-U	A2	T	U	
	38		13-21	9	A2	V	V	
	39		13-W	9	A2	R	D	
	40	13-1	13-21	A2	21	E		
	41	14-1	14-21	A3	U, X, Y	F, G, H		
	42	15-1	15-21	A4	1	22		
	43	13-Y	11	A2	1	22		
	44	14-Y	16	A3	1	PIN 22		
	45	15-Y	16	A4	Z			
	46	13-19	14-19	A2	Z	GRD		
	47	15-19	14-19	A4	Z	GRD		
	48	15-19	12-H	A4	Z	GRD		
	49	12-Y	14-3	A1	20	A3	PIN 20	
	50	15-3	14-3	A4	20	A3	H	
				A4	20	A1	4	
				A4	Y	A3	4	
				A4	PIN 4	A3	PIN 4	



## RTPH-3 CLASS II

REQ	ITEM	PART NUMBER	BREAKOUT		DESTINATION OR DESCRIPTION			
			FROM	TO	FROM	TO		
	51	MWC24 (7) U7	15-3	12-W	A4	PIN 4	A1	PIN X
	52	MWC24 (7) U7	13-3	12-U	A2	PIN 4	A1	PIN V
	53	CD101-1MW			CORD, NYLON LACING			
	54	BS100			SOLDER, TIN ALLOY			
	55	PX830-12-1			INS. SLVG. SHRINK			
	56	LA101			BAND, MARKER, CABLE			
	57	MS3102A-20-27P			CONN, RECP, ML (J2)			