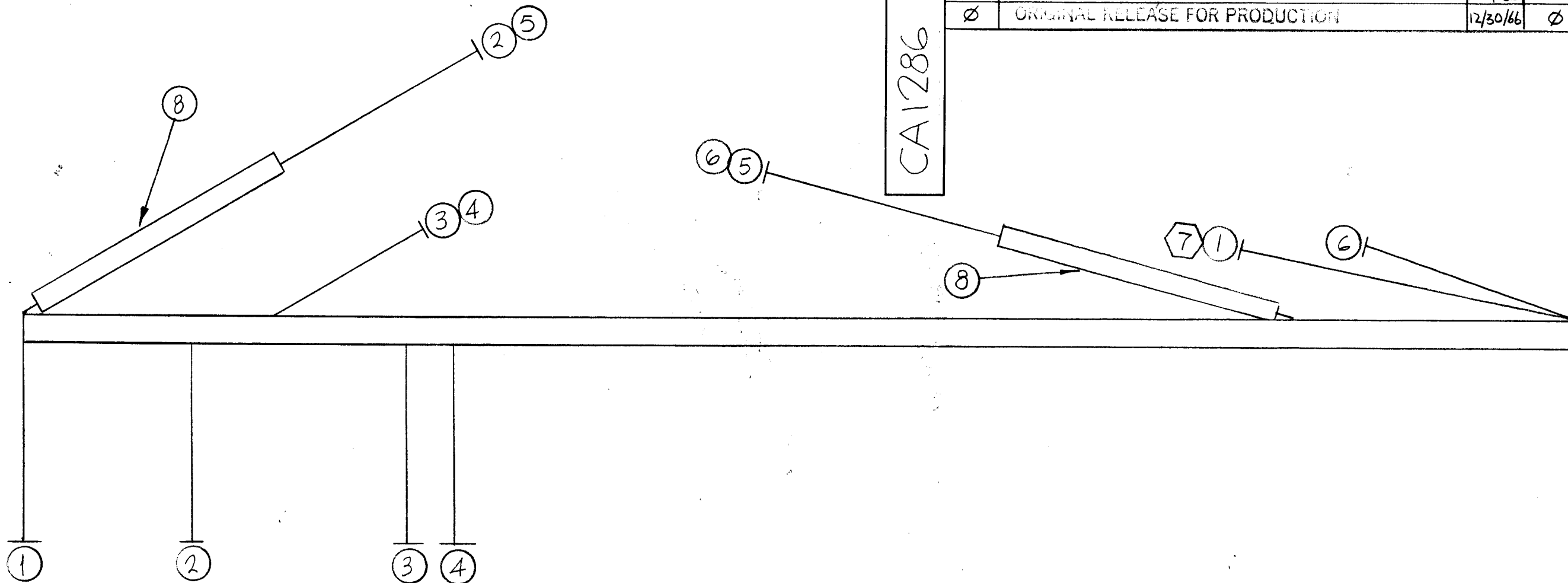


CA1286

REVISIONS						
SYM	DESCRIPTION	DATE	E.M.N. NO.	DRAFT	CHKD	APPD
X	EXP. RELEASE	10-4-66	X			
Ø	ORIGINAL RELEASE FOR PRODUCTION	12/30/66	Ø	RME		



THIS SYMBOL DENOTES END OF INSULATION AND NAIL DRIVING POINT. WIRE MUST BE STRIPPED 3/4" BEYOND THIS POINT AND TINNED 1/2" UNLESS OTHERWISE SPECIFIED.

SYMBOL DENOTES
 ○ = ITEM NO'S
 ⬡ = LUGS

UNLESS OTHERWISE SPECIFIED WIRES SHOULD BE PLACED IN CABLE IN NUMERICAL SEQUENCE AS THEY APPEAR IN ITEM COLUMN BY CATEGORY.

- ALL R.F. CABLES
- ALL SHIELDED CABLES
- ALL OTHERS

SPACE LACING APPROXIMATELY 3/4" APART.

REQ'D.	ITEM	PART NUMBER	DESCRIPTION	SYMBOL
	10	CD101-1MW	CORD, NYLON, LACING	
	9	BS100	SOLDER, TIN ALLOY	
	8	PX100-1-133	INSULATION SLVG, ELEC.	
1	7	TE120-2	TERM, LUG SPADE	
	6	MWC22(7) U4	S9000	CR9000
	5	U3	XF9000	S9000
	4	U6	E9000 TERM 14	J9000
	3	U5	12	J9000
	2	U2	7	XF9000
	1	MWC22(7)U90	E9000 TERM 3	DS9001

F. BUDETTI LIST OF MATERIAL

MATERIAL: THE TECHNICAL MATERIEL CORP.
MAMARONECK, NEW YORK

FINISH: CABLE, MAIN

UNLESS OTHERWISE SPECIFIED DIMENSIONS ARE IN INCHES AND INCLUDE CHEMICALLY APPLIED OR PLATED FINISHES

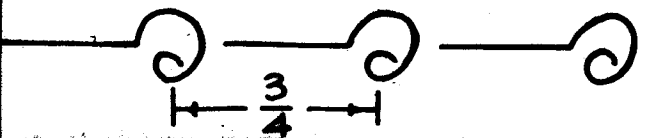
DRAWN	DATE	FINAL APPROVAL	DATE
CHECKED	10-4-66		12/30/66
ELECT. DES.	DATE	CA1286	Ø
MECH. DES.	DATE		

DECIMALS: .X ± .05, .XX ± .01, .XXX ± .005
 FRACTIONS: ± 1/64, ANGLES: ± 0° 30'

TOLERANCES

THE CONTENTS OF THIS DRAWING ARE THE EXCLUSIVE PROPERTY OF THE TECHNICAL MATERIEL CORP. ITS UNAUTHORIZED USE OR REPRODUCTION IN WHOLE OR IN PART IS STRICTLY FORBIDDEN.

1	AX-647	A5556
QTY./UNIT	MODEL USED ON	ASSY. NO.
SCALE 1:1	CODE A	



NOTES