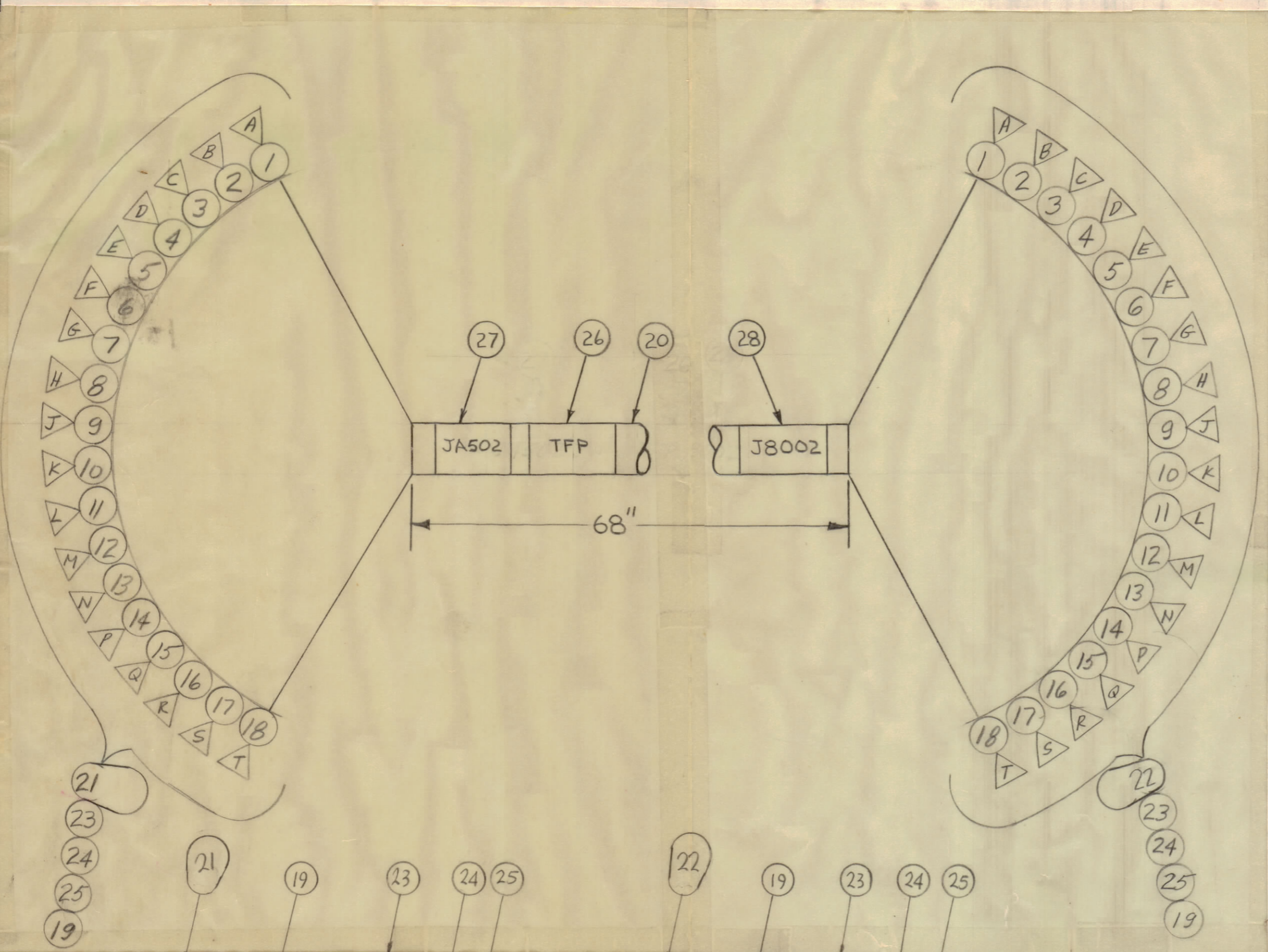
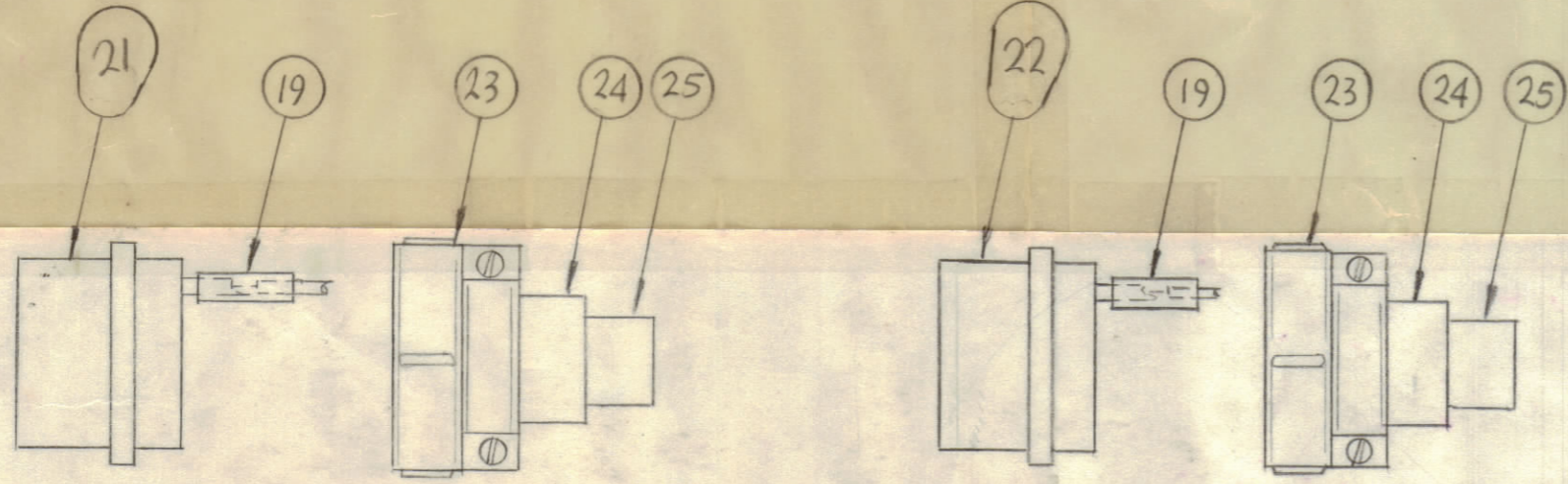


REVISIONS						
SYM	ZONE	DESCRIPTION	DATE	E.M.N.NO	DRAFT	CHKD APPD
X		EXPERIMENTAL RELEASE	9-26-66	X		BM BM
Ø		ORIGINAL RELEASE FOR PRODUCTION	3-20-67		L.A.K.	



QTY	ITEM	PART NO.	DESCRIPTION	SYMBOL
X	29	BS100	SOLDER, TIN ALLOY	
1	28	LA107-20-J8002	SLV, MARKER, CBL	
1	27	LA107-20-J4502	SLV, MARKER, CBL	
1	26	LA107-15-TFP	SLV, MARKER, CBL	
2	25	MS3420-12A	BUSH, RUB	
2	24	MS3420-8A	BUSH, RUB	
2	23	MS3057-16	CLP, CBL, EL CONN	
1	22	MS3106B24-28P	CONN, PL, ML 24/C	P8048
1	21	MS3106B24-28S	CONN, PL, FML 24/C	P8049
20	20	PX100-1-375	INS, SLVG	BLK
19	19	PX100-1-106	INS, SLVG	BLK
18	18	MWC16 (19)U0	P8049-T TCP J4502	P8048-T J8002
17	17	MWC22 (7)U97	-S	-S
16	16	96	-R	-R
15	15	95	-Q	-Q
14	14	94	-P	-P
13	13	93	-N	-N
12	12	92	-M	-M
11	11	91	-L	-L
10	10	90	-K	-K
9	9	9	-J	-J
8	8	8	-H	-H
7	7	7	-G	-G
6	6	6	-F	-F
5	5	5	-E	-E
4	4	4	-D	-D
3	3	3	-C	-C
2	2	2	-B	-B
1		MWC22 (7)U1	P8049-A TCP J4502	P8048-A J8002



SYMBOL - DENOTES
 ○ = ITEM NOS
 △ = PINS
 ◐ = CONNECTORS
 □ = TAGS

THIS SYMBOL DENOTES END OF INSULATION AND NAIL DRIVING POINT. WIRE MUST BE STRIPPED 3/4" BEYOND THIS POINT AND TINNED 1/2" UNLESS OTHERWISE SPECIFIED.

QTY	USED ON	DATE
1	RAK110-2G	

MAXIMUM ALLOWABLE TOLERANCES HAVE BEEN DETERMINED AND ANY DEVIATIONS WILL BE CAUSE FOR REJECTION.

UNLESS OTHERWISE SPECIFIED DIMENSIONS ARE IN INCHES TOLERANCES ON FRACTIONS DECIMALS ANGLES ±1/64 ±.005 ±1/2°

FINISH

APPROVED FOR BUSHIPS

CONTRACT NO.

QTY REQ	ITEM	PART NO.	DESCRIPTION	SYMBOL
BUDETTI BILL OF MATERIAL				
FINAL APPROVAL		DATE		
MECH. DES.		DATE		
ELECT. DES.		DATE		
CHECKED		DATE		
DRAWN		DATE		
APPROVED FOR BUSHIPS		CODE	SIZE	DWG. NO.
		82679	C	CA1274
CONTRACT NO.		SCALE	SHEET OF	

THE TECHNICAL MATERIEL CORP.
MAMARONECK, NEW YORK

CABLE, SPECIAL PURPOSE

ISSUE