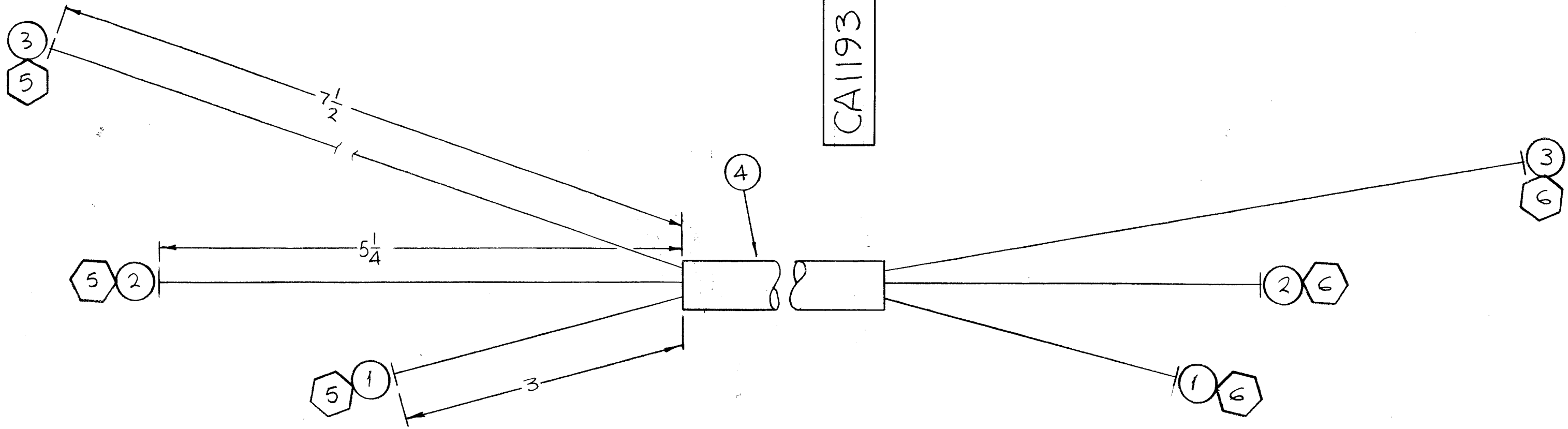


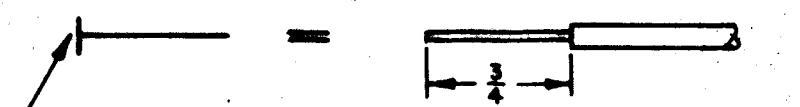
CA1193

REVISIONS						
SYM	DESCRIPTION	DATE	E.M.N. NO.	DRAFT	CHKD	APPD
Ø	ORIGINAL RELEASE FOR PRODUCTION	3/14/66	Ø	ALA		<i>[Signature]</i>




SYMBOL - DENOTES

- = ITEM NO'S
- = LUG NO'S

 THIS SYMBOL DENOTES END OF INSULATION AND NAIL DRIVING POINT. WIRE MUST BE STRIPPED 3/4" BEYOND THIS POINT AND TINNED 1/2" UNLESS OTHERWISE SPECIFIED.

NOTES

1	GPT-40K	
Q'TY./UNIT	MODEL USED ON	ASS'Y. NO.
SCALE 	CODE A	
THE CONTENTS OF THIS DRAWING ARE THE EXCLUSIVE PROPERTY OF THE TECHNICAL MATERIEL CORP. ITS UNAUTHORIZED USE OR REPRODUCTION IN WHOLE OR IN PART IS STRICTLY FORBIDDEN.		

REQ'D.	ITEM	PART NUMBER	DESCRIPTION	SYMBOL
X	7	BS100	SOLDER, TIN, ALLOY	
3	6	TE197-6-50	TERM, LUG, INS.	
3	5	TE197-6-25	TERM, LUG, INS.	
42"	4	PX100-1-625	INS., SLVG. ELECT.	
56"	3	HWC6(127)B90	WIRE, ELECT BRD	
52"	2	HWC6(127)B92	WIRE, ELECT BRD	
48"	1	HWC6(127)B9	WIRE, ELECT BRD	

F. BUDETTI LIST OF MATERIAL				
MATERIAL		THE TECHNICAL MATERIEL CORP. MAMARONECK, NEW YORK		
FINISH		TITLE CABLE, ASS'Y ELECTRICAL		
UNLESS OTHERWISE SPECIFIED DIMENSIONS ARE IN INCHES AND INCLUDE CHEMICALLY APPLIED OR PLATED FINISHES		DRAWN <i>[Signature]</i>	DATE 11-22-65	FINAL APPROV. <i>[Signature]</i>
DECIMALS .X ± .05 .XX ± .01 .XXX ± .005		CHECKED <i>[Signature]</i>	DATE 3-14-66	DATE 3/14/66
FRACTIONS ± 1/64 ANGLES ± 0° 30'		ELECT. DES. <i>[Signature]</i>	DATE 3-14-66	REV. LTR. Ø
TOLERANCES		MECH. DES.	DATE	SHEET