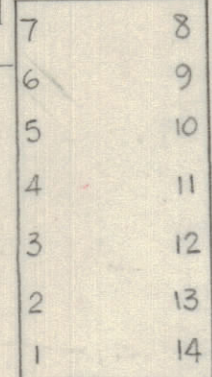
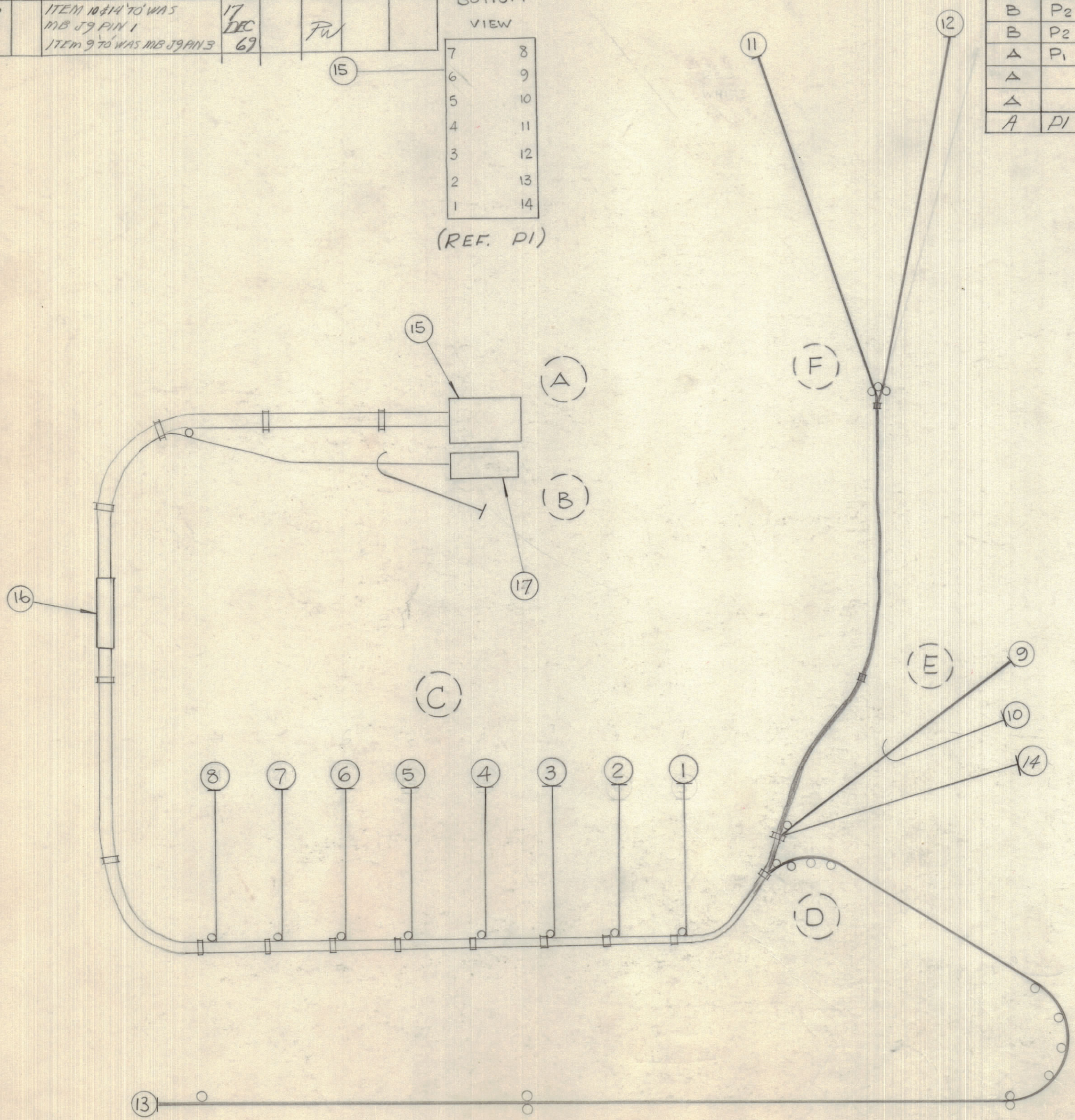


IF IT IS FOUND DESIRABLE TO CHANGE ANY TOLERANCE OR OTHER DETAIL SPECIFIED ON THIS DRAWING NOTIFY THE PURCHASER PROMPTLY.		DIMENSIONS IN INCHES UNLESS OTHERWISE SPECIFIED					
MAXIMUM ALLOWABLE TOLERANCES HAVE BEEN DETERMINED AND DEVIATIONS WILL BE CAUSE FOR REJECTION. REMOVE ALL BURRS AND SHARP EDGES.							
ISSUE	ITEM	CHANGED FROM	DATE	CN. NO.	DRAFTS	CHECKER	ENG. APP.
X		ENG REL	AUG 21-69		AHa		
X1		ITEM 9 & 10 TO BNOT WAS D' ITEM 11 & 12 TO BNOT WAS E' ITEM 17 WAS ITEM 14 NEW ITEM 14 ADDED ITEM 13 WAS 'BLK'	15 DEC 69		PW		
X2		ITEM 10 & 14 TO WAS MB J9 PIN 1 ITEM 9 TO WAS MB J9 PIN 3	17 DEC 69		PW		

BOTTOM VIEW

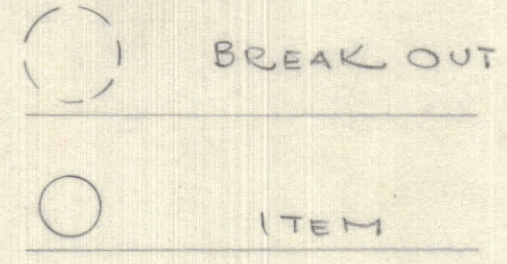


(REF. P1)



BREAK OUT	FROM	BREAK OUT	TO	REQ.	ITEM	PART NO.	DESCRIPTION	SYMBOL
A	P1 PIN # 6	C	MB (REC) # 3	1		LW-C-24-7-J-1	WIRE ELECT.	
A	7	C	6	2				
A	8	C	9	3				
A	9	C	12	4				
A	10	C	15	5				
A	11	C	18	6				
A	12	C	21	7				
A	13	C	24	8				
B	P2 COND.	E	MB PIN 30	9		RG/174U		
B	P2 SCREEN GRD	E	MB PIN 31	10		SCREEN		
A	P1 PIN # 1	F		11		LW-C-24-7-J-29	WIRE ELECT.	
A	2	F		12		LW-C-24-7-J-39		
A	3	D	J PIN "G"	13		LW-C-24-7-J-9		
A	P1 PIN 4	E	MB PIN 31	14		LW-C-24-7-J-0		

1	15	PL 10010	CONN. PLUG	
1	16	PX100-5-186	SLEEVING MARKED CA 10562 C/W LATEST REV. LETTER	
1	17	PL159	CONN. PLUG	



CA 10562 X2

THIS SYMBOL DENOTES END OF INSULATION AND NAIL DRIVING POINT. WIRE MUST BE STRIPPED 1/2" BEYOND THIS POINT AND TINNED 1/4" UNLESS OTHERWISE SPECIFIED.

THE ABOVE SYMBOL DENOTES END OF SHIELD, WHICH SHOULD BE TERMINATED AS SHOWN, LEAVING EXCESS SHIELDING AS A PIGTAIL. TIN PIGTAIL 1/4 INCH.

TOLERANCES		SCALE:
ALL OTHERS	DEC DIM. ± 1/64 FRAC DIM. ± 1/64 ANGULAR DIM. ± 0°30'	.X=.08 .XX=.01 .XXX=.008 DRILL, PUNCH, COMMERCIAL STOCK SIZES AND MANUFACTURERS TOLERANCES ARE NOT INCLUDED.

MTR 16	087-69	AUG 21-69
MODEL	PROJECT NO.	DATE

STOCK SIZE		TMC (Canada) LIMITED OTTAWA ONTARIO	
MATERIAL		CABLE, HARNESS RX	
WEIGHT PER PC.		AHa	
TYPE & TEMPER		DRAWN	ELEC. DES. APP.
HEAT TREAT. SPEC.		CHECKED	MECH. DES. APP.
FINISH & SPEC. NO.		FINAL APPROVAL	
		CA 10562 X2	