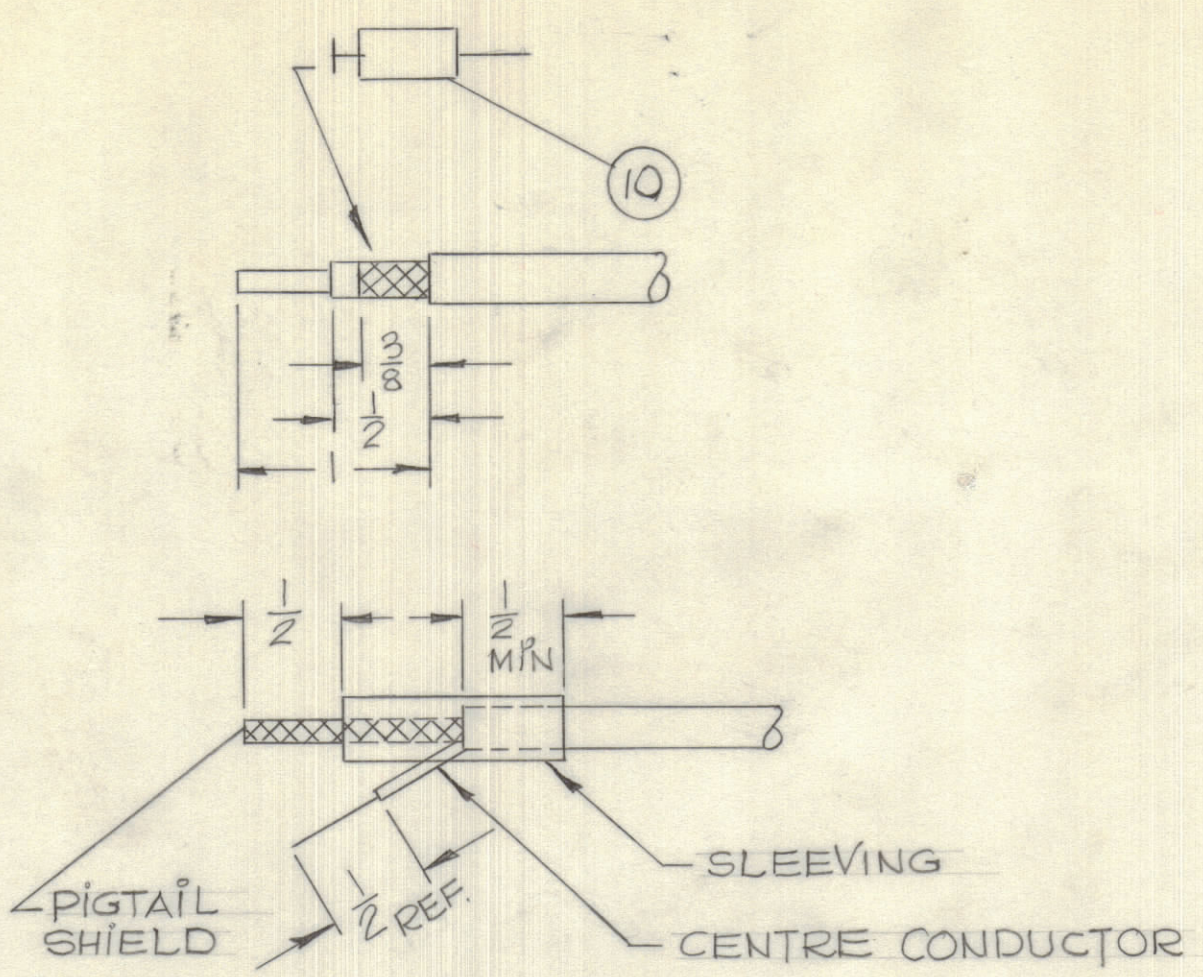


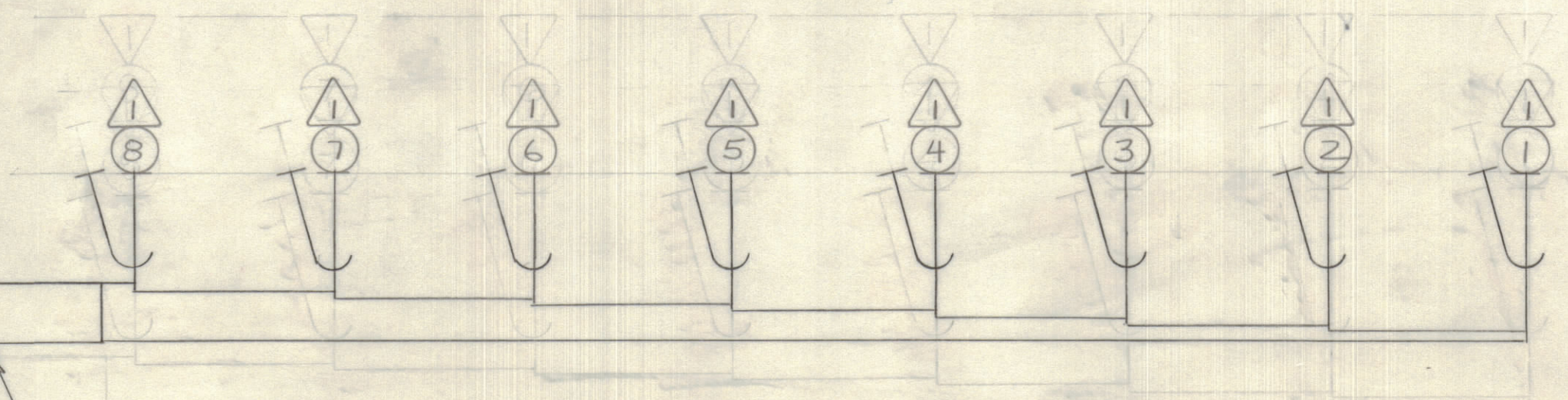
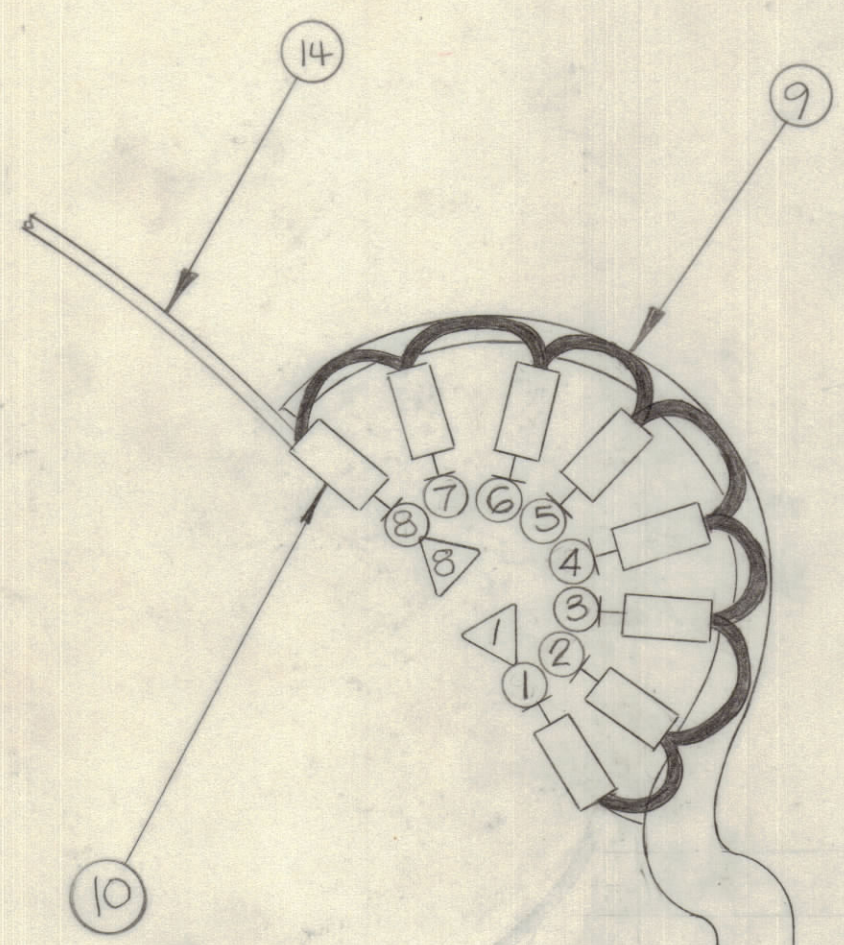
IF IT IS FOUND DESIRABLE TO CHANGE ANY TOLERANCE OR OTHER DETAIL SPECIFIED ON THIS DRAWING NOTIFY THE PURCHASER PROMPTLY.		DIMENSIONS IN INCHES UNLESS OTHERWISE SPECIFIED					
MAXIMUM ALLOWABLE TOLERANCES HAVE BEEN DETERMINED AND DEVIATIONS WILL BE CAUSE FOR REJECTION. REMOVE ALL BURRS AND SHARP EDGES.							
ISSUE	ITEM	CHANGED FROM	DATE	CN. NO.	DRAFTS	CHECKER	ENG. APP.
Ø		REL TO PROD.	JUNE 12/68		RPL	JW	JW

REQ.	ITEM	PART NO.	DESCRIPTION	SYMBOL
	1	RG174/U	CABLE, COXIAL	
	2	↑	↑	↑
	3	↑	↑	↑
	4	↑	↑	↑
	5	↑	↑	↑
	6	↑	↑	↑
	7	↓	↓	↓
	8	RG174/U	CABLE, COXIAL	
	7	9	CA10519-1	CABLE SINGLE WIRE
	8	10	CU-100IG-1	FERRULE, INSULATED.
	1"	11	PX100-9-330	INSULATION SLEEVING, ELECT.
AR	12	CU142-8	STRAP, CABLE ADJUSTABLE PLASTIC	
AR	13	BS-100	SOLDER, SOFT.	
	1	14	CA10519-2	CABLE SINGLE WIRE



THE ABOVE SYMBOL DENOTES END OF SHIELD, WHICH SHOULD BE TERMINATED AS SHOWN, LEAVING EXCESS SHIELDING AS A PIGTAIL. TIN PIGTAIL 1/4 INCH.

SYMBOLS DENOTES:
 ○ ITEM NO'S
 ▽ PIN NO'S



CA10518 Ø

TOLERANCES		SCALE: 1:1
ALL OTHERS	DEC. DIM. ± 1/64	DRILL, PUNCH, COMMERCIAL STOCK SIZES AND MANUFACTURERS TOLERANCES ARE NOT INCLUDED.
	FRAC. DIM. ± 1/64	
	ANGULAR DIM. ± 0° 30'	

SMR-5	061/68	MAR-6/68
MODEL	PROJECT NO.	DATE

TMC (Canada) LIMITED
 OTTAWA ONTARIO

CABLE ASSEMBLY
 (ANTENNA INPUT)

DRAWN: *John Tom* ELEC. DES. APP. MECH. DES. APP. JW

CHECKED: *[Signature]* FINAL APPROVAL

CA10518 Ø