

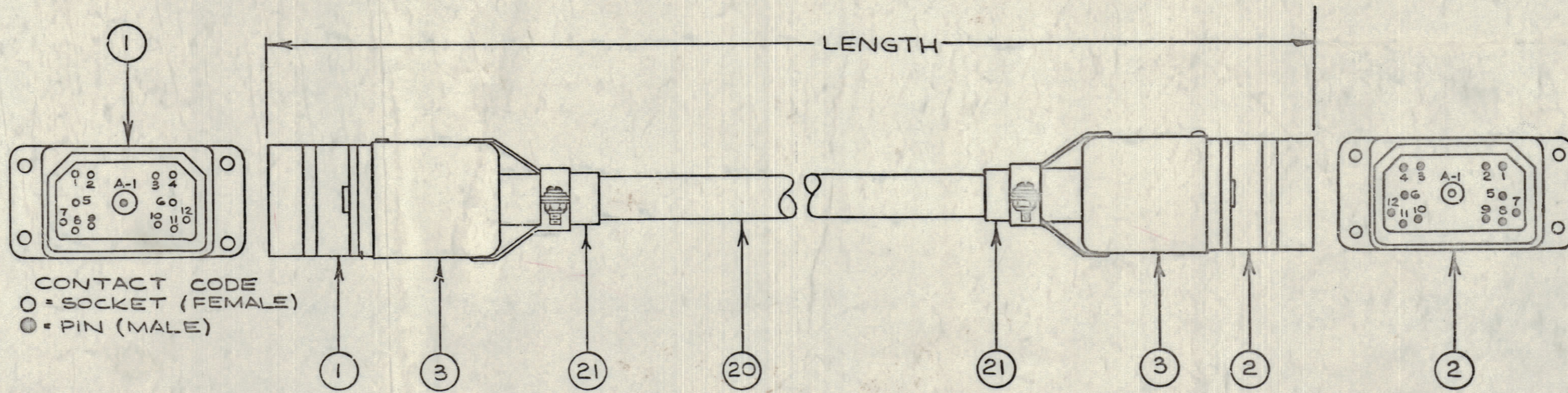
IF IT IS FOUND DESIRABLE TO CHANGE ANY TOLERANCE OR OTHER DETAIL SPECIFIED ON THIS DRAWING NOTIFY THE PURCHASER PROMPTLY.

MAXIMUM ALLOWABLE TOLERANCES HAVE BEEN DETERMINED AND DEVIATIONS WILL BE CAUSED FOR REJECTION. REMOVE ALL SHARP AND CHAMF EDGES

NOTICE TO PERSONS RECEIVING THIS DRAWING

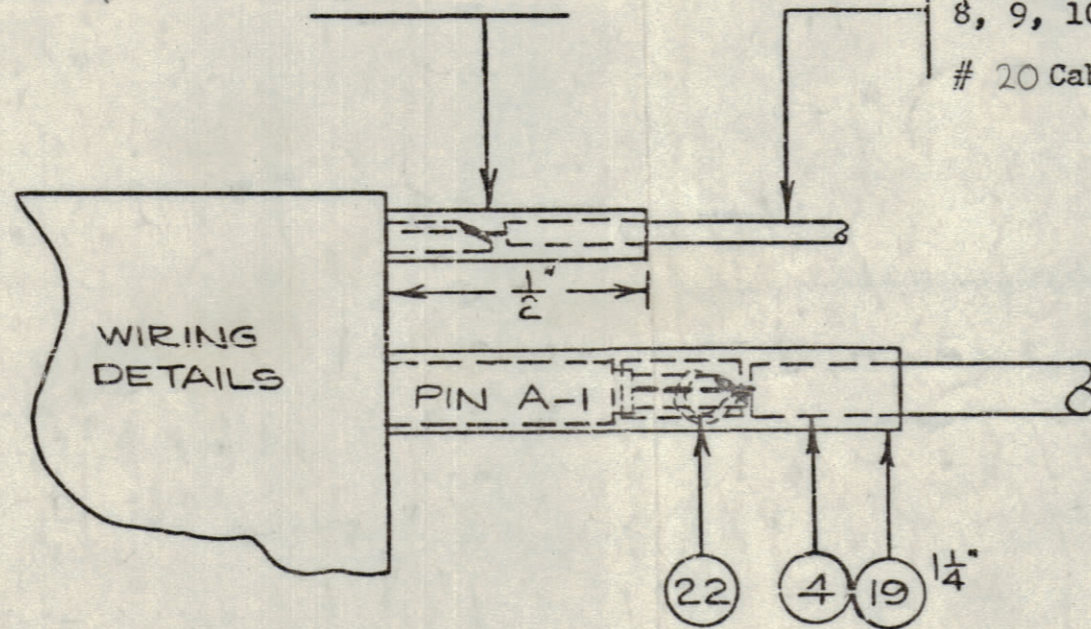
THE TECHNICAL MATERIEL CORPORATION claims proprietary right in the material disclosed hereon. This drawing is issued in confidence for engineering information only and may not be re-used or used to manufacture anything shown hereon without permission from THE TECHNICAL MATERIEL CORPORATION to the user. This drawing is loaned for mutual assistance and is subject to recall at any time.

Property of:
THE TECHNICAL MATERIEL CORPORATION
MAMARONECK, NEW YORK



ITEM # 18 sleeving for all #16 #20 & #22 CABLE.

22 Cable (as per Chart) for Pins 1, 3, 4, 5, 6, 8, 9, 10, 11, 12,
20 Cable for Pins 2&7.



WIRING CHART		
ITEM NO	CONNECT	PINS
4	A-1 to A-1	
5	1 to 1	
6	2 to 2	
7	3 to 3	
8	4 to 4	
9	5 to 5	
10	6 to 6	
11	7 to 7	
12	8 to 8	
13	9 to 9	
14	10 to 10	
15	11 to 11	
16	12 to 12	

CA10136 D

NOTE: After soldering, wind three turns of tape (item 22) around connection, then slip sleeving (item 19) on as shown. (PIN A-1 ONLY) After taping, there will be NO BARE WIRE showing.

TYPE DESIGNATION TO BE AS FOLLOWS

CA10136-72

TMC DRAWING NO.

REQUIRED LENGTH (INCHES)

(Length will always be expressed to the nearest inch.)

-	23	BS-100	Solder, soft	
-	22	TA-100-1	Tape, vinyl plastic, 1/4 wide	Blk.
2	21	MS3420-12A	Bushing, Cable (.541 ID)	Blk.
-	20	PX-100-1-438	Insulation, sleeving (S.7/16)	Blk.
2 1/2	19	PX830-18-1	Insulation, sleeving SHRINK	Blk.
1	18	PX830-6-1	Insulation, sleeving SHRINK	Blk.
-	17	DELETED		
-	16	MWC22(7)U90	Cable, ins., stranded	Wh/Blk.
-	15	MWC22(7)U92	" " "	Wh/Red
-	14	MWC22(7)U9	" " "	White
-	13	MWC22(7)U8	" " "	Grey
-	12	MWC22(7)U7	" " "	Viol.
-	11	MWC22(7)U6	" " "	Blue
-	10	MWC22(7)U5	" " "	Grn.
-	9	MWC22(7)U4	" " "	Yell.
-	8	MWC22(7)U3	" " "	Or.
-	7	MWC22(7)U2	" " "	Red
-	6	MWC22(7)U1	" " "	Brn.
-	5	MWC22(7)U0	" " "	Blk.
-	4	WT-126-1	Wire, heavy duty Size 18	Red
2	3	PC-150-1	Shell, Connector	
1	2	PL-160-P	Connector, Plug, male	P102
1	1	PL-160-S	Connector, Plug, female	P101

ISSUE	ITEM	CHANGED FROM	DATE	CH. NO.	DRAFTS	CHECKER	ENG. APP.
D		WIRING DETAIL NOTE #16	1/26/66	17504	WHD	JCP	JF
C		IT. 15 WAS PINK	2-2-66	15617	WHD	JCP	JF
B		B/M: IT.(17) DELE; IT.(18) WAS PX100-1-118; IT.(19) WAS PX100-1-263; IT.(21) WAS AN3420-12A; PICT: IT.(18) FOR #22 CABLE WAS 17	1/14/65	13133	JF	@	JCP
A		CA10136A WAS CA367A	JAN. 23/61		JPC		KH

PSP-500	028/66		DEC.16/66
PSP-350			JAN.23/61
MODEL	PROJECT NO.	ASS'Y. NO.	DATE
USED ON			

REQ.	ITEM	PART NO.	DESCRIPTION	SYMBOL
TMC (Canada) LIMITED				
STOCK SIZE		OTTAWA ONTARIO		
MATERIAL		CABLE ASS'Y, POWER		
WEIGHT PER PC.		(PSP350 TO RFA-1)		
TYPE & TEMPER		JPC		
HEAT TREAT. SPEC.		DRAWN ELEC. DES. APP. MICH. DES. APP.		
FINISH & SPEC. NO.		CHECKED FINAL APPROV. L		

CA10136 D