

IF IT IS FOUND DESIRABLE TO CHANGE ANY TOLERANCE OR OTHER DETAIL SPECIFIED ON THIS DRAWING NOTIFY THE PURCHASER PROMPTLY.

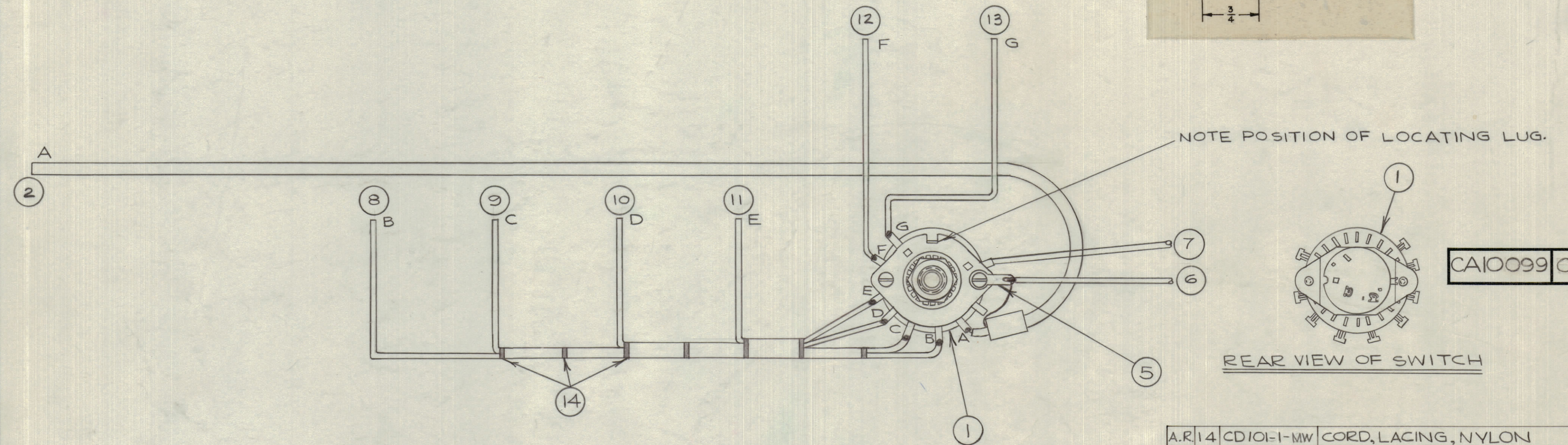
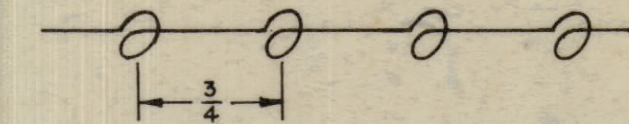
MAXIMUM ALLOWABLE TOLERANCES HAVE BEEN DETERMINED AND DEVIATIONS WILL BE CAUSE FOR REJECTION. REMOVE ALL BURRS AND SHARP EDGES

**NOTICE TO PERSONS RECEIVING THIS DRAWING**

THE TECHNICAL MATERIEL CORPORATION claims proprietary right in the material disclosed hereon. This drawing is issued in confidence for engineering information only and may not be reproduced or used to manufacture anything shown hereon without permission from THE TECHNICAL MATERIEL CORPORATION to the user. This drawing is loaned for mutual assistance and is subject to recall at any time.

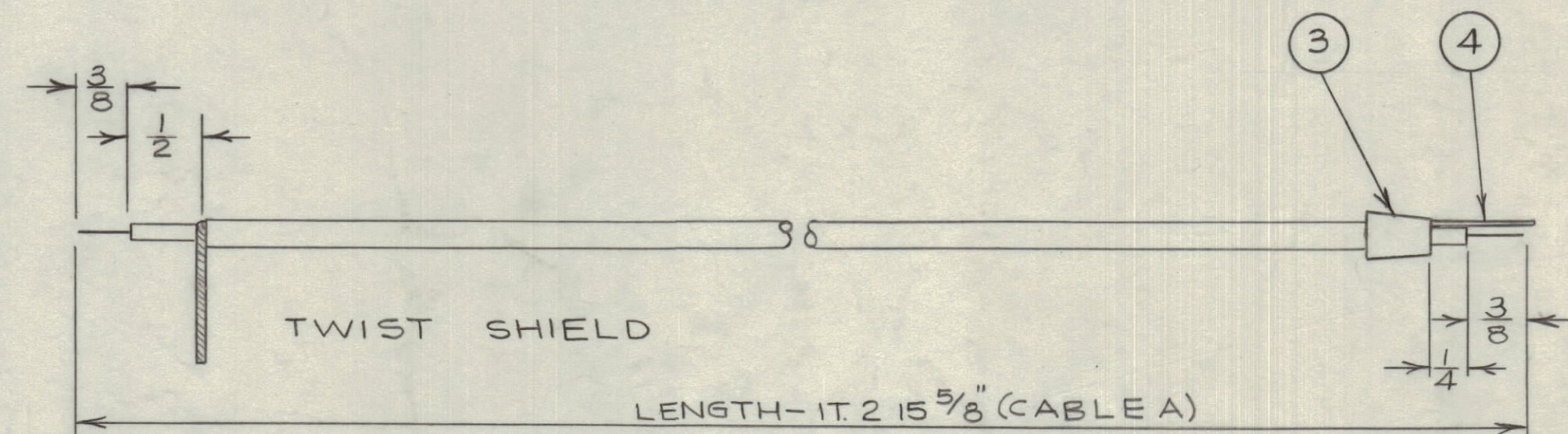
Property of:  
THE TECHNICAL MATERIEL CORPORATION  
MAMARONECK, NEW YORK

WIRES SHOULD BE PLACED IN CABLE IN NUMERICAL SEQUENCE AS THEY APPEAR IN ITEM COLUMN. SPACE LACING APPROXIMATELY 3/4" APART.



CA10099 C

REAR VIEW OF SWITCH



A.R. 14	CD101-1-MW	CORD, LACING, NYLON
6"	13 MWC22(7)U96	WIRE (WH/BLU.)
4 1/2"	12	(WH/GRN.)
5 1/8"	11	(WH/YEL.)
6 3/4"	10	(WH/OR.)
8 3/4"	9	(WH/RED)
10 3/4"	8	(WH/BRN.)
9 1/2"	7	(RED)
9 1/2"	6	(BLACK)
1	5 TE110-2	SOLDER LUG
1	4 WL100-7	WIRE #22 TINNED COPPER
1	3 TE10010	CONNECTOR, BURNDY
2	WI-129-21-597	MINIATURE, COAXIAL CABLE
1	1 SW10010	SWITCH

REQ.	ITEM	PART NO.	DESCRIPTION	SYMBOL
<b>TMC (Canada) LIMITED</b> OTTAWA ONTARIO				
<b>METER SW HARNESS</b>				
MATERIAL		WEIGHT PER PC.		
TYPE & TEMPER		JPC		
HEAT TREAT. SPEC.		DRAWN		
FINISH & SPEC. NO.		ELEC. DES. APP. MECH. DES. APP.		
		CHECKED		
		FINAL APPROVAL		

C	1	ITEM (2) WAS 5-21-597 ITEM (14) WAS CD-100-2	10-24-63	0277	G.D.L.	mt	QJB
B		REDRAWN USED FROM SERIAL # 5425 ONWARDS	JAN 9 1961		JPC		W. K.
ISSUE	ITEM	CHANGED FROM	DATE	CN. NO.	DRAFTS	CHECKER	ENG. APP.
TOLERANCES			SCALE:				
ALL OTHERS	DEC. DIM. ±	FRAC. DIM. ±	ANGULAR DIM. ±	DRILL, PUNCH, COMMERCIAL STOCK SIZES AND MANUFACTURERS TOLERANCES ARE NOT INCLUDED.			

AMC 6-5	CE-646		JAN. 9/61
MODEL	PROJECT NO.	ASS'Y. NO.	DATE
USED ON			