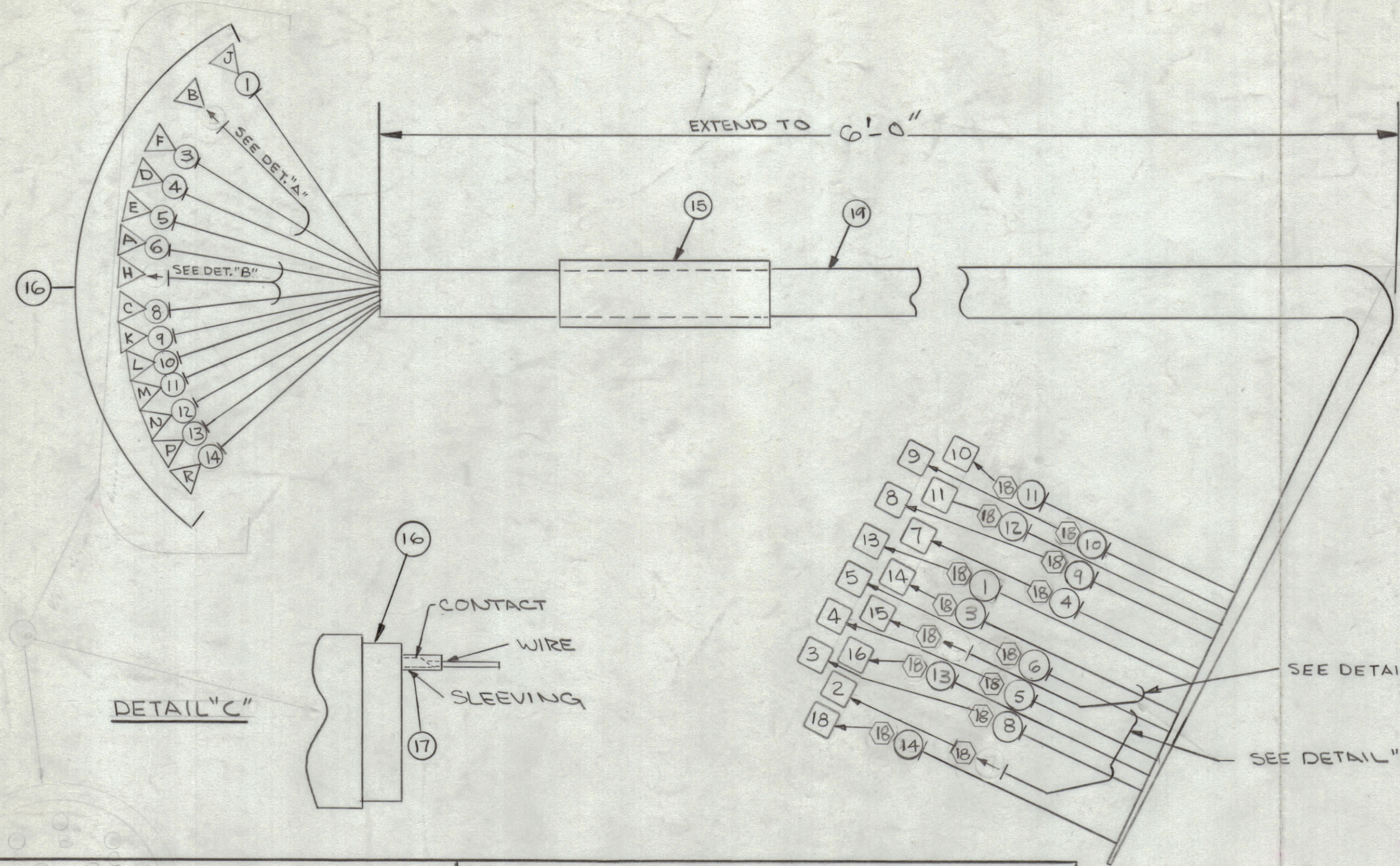


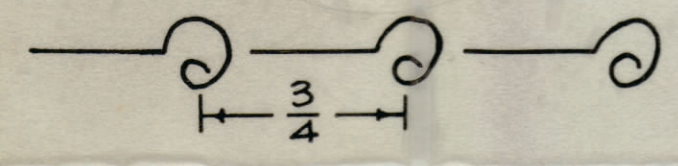
REVISIONS					
ZONE	SYM	DESCRIPTION	DATE	E.M.N. NO.	DRAFT
	Ø	ORIGINAL RELEASE FOR PRODUCTION	10/25/65		
	A	ON PICT. DELE. IT. 2 & 7; ON B/M. UPDATED. IT. 15, 16, 18, 19	2/25/65	15742	HCA [Signature]



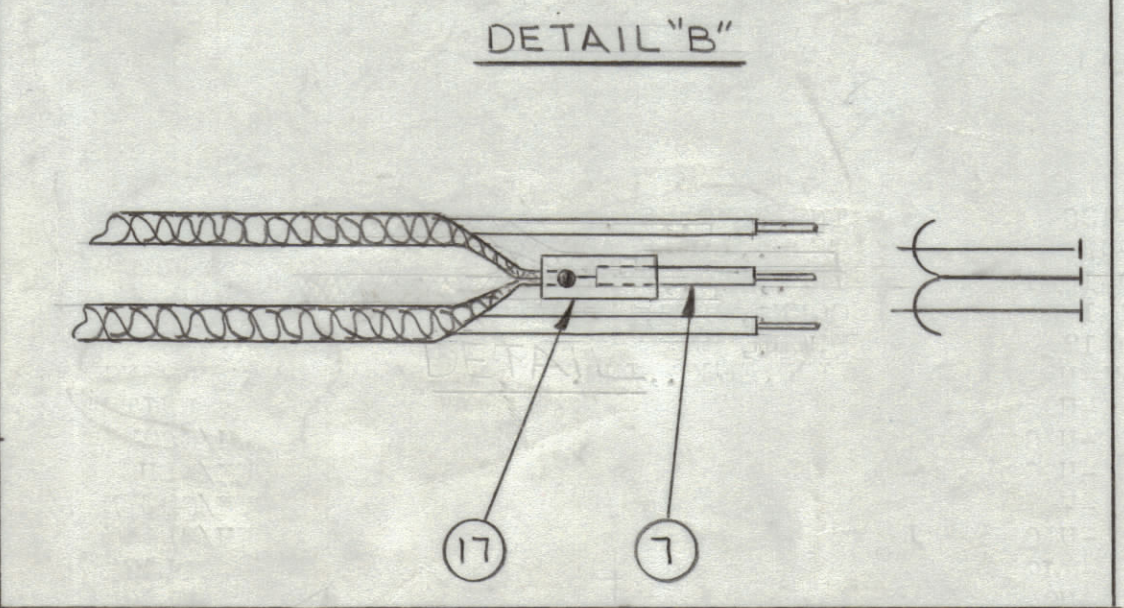
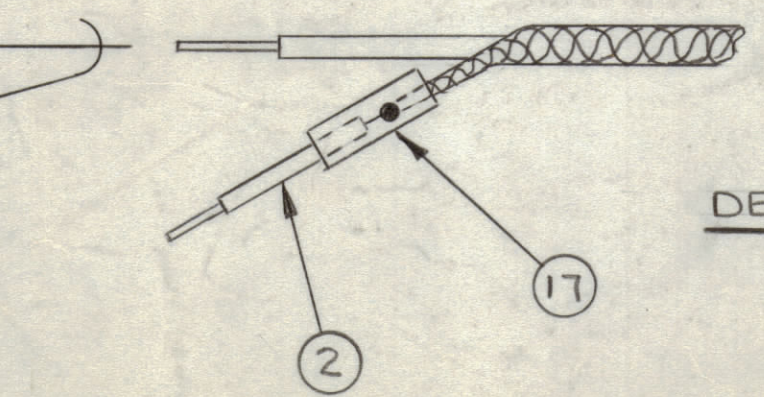
UNLESS OTHERWISE SPECIFIED WIRES SHOULD BE PLACED IN CABLE IN NUMERICAL SEQUENCE AS THEY APPEAR IN ITEM COLUMN BY CATEGORY.

1. ALL R.F. CABLES
2. ALL SHIELDED CABLES
3. ALL OTHERS

SPACE LACING APPROXIMATELY 3/4" APART.



THIS SYMBOL DENOTES END OF INSULATION AND NAIL DRIVING POINT. WIRE MUST BE STRIPPED 3/4" BEYOND THIS POINT AND TINNED 1/2" UNLESS OTHERWISE SPECIFIED.



SYMBOLS

- DENOTES ITEM NO.'S
- △ DENOTES PIN NO.'S
- ◇ DENOTES TERM. LUG PLACEMENT
- DENOTES CONNECTIONS ON TPC-1 TERM. BD

NOTES

1	TPC-1	A5034
Q'TY./UNIT	MODEL USED ON	ASS'Y. NO.
SCALE	CODE	

THE CONTENTS OF THIS DRAWING ARE THE EXCLUSIVE PROPERTY OF THE TECHNICAL MATERIEL CORP. ITS UNAUTHORIZED USE OR REPRODUCTION IN WHOLE OR IN PART IS STRICTLY FORBIDDEN.

REQ'D.	ITEM	PART NUMBER	DESCRIPTION	SYMBOL
	20	BS100	SOLDER, TIN ALLOY	
	19	PX100-1-438	INS. SLVG., SZ.	
14	18	TE120-2	TERM., LUG-SPADE	
	17	PX-830-18-1	INS. SLVG., SHRINK	
1	16	PL-212-1	CONN., PLUG, FEMALE	
1	15	MS3420-12	BUSH., RUBBER	
	14	MWC20-7-U3	WIRE, ELEC., INS.	
	13	-U9		ORANGE
	12	-U98		WHITE
	11	-U96		WH/GRAY
	10	-U95		WH/BLUE
	9	-U90		WH/GREEN
	8	-SJO		WH/BLACK
	7	DELETED		BLACK
	6	-S75		GREEN
	5	-U97		WH/VIOLET
	4	-U6		BLUE
	3	-S74		YELLOW
	2	DELETED		
	1	MWC20-7-U7	WIRE, ELEC., INS.	VIOLET

LIST OF MATERIAL			
MATERIAL	THE TECHNICAL MATERIEL CORP. MAMARONECK, NEW YORK		
FINISH	TITLE WIRING HARNESS		
UNLESS OTHERWISE SPECIFIED DIMENSIONS ARE IN INCHES AND INCLUDE CHEMICALLY APPLIED OR PLATED FINISHES	DRAWN	DATE	FINAL APPROVAL
	EAENZA	9-22-65	[Signature]
	CHECKED	DATE	
	J.L.	9/23/65	
DECIMALS .X ± .05 .XX ± .01 .XXX ± .005	TOLERANCES	FRACTIONS ± 1/64 ANGLES ± 0° 30'	DATE
			10/23/65
			CA1095
			A

CA1095 A