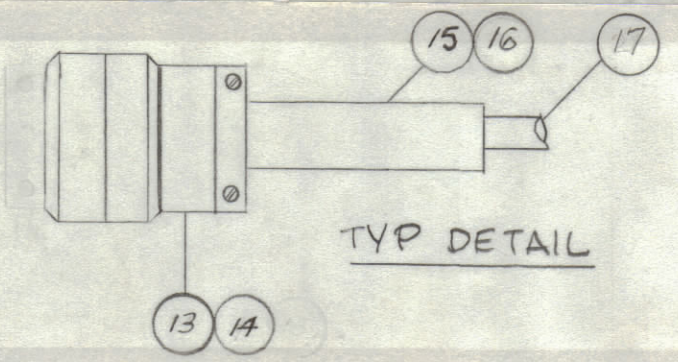
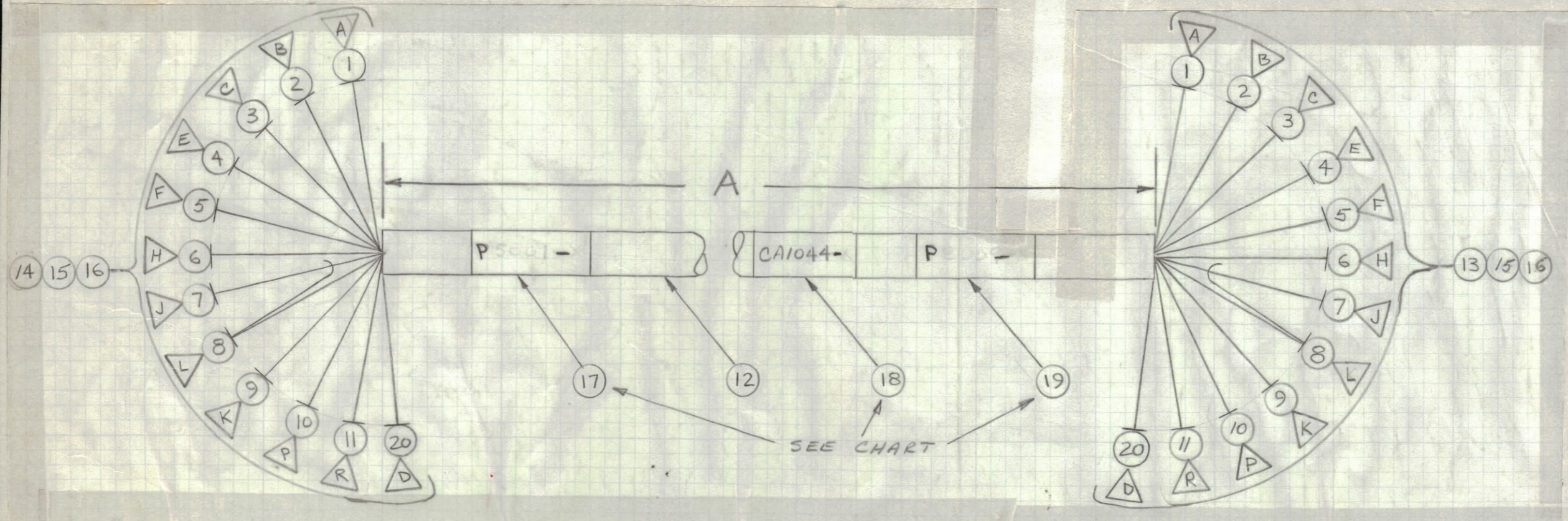


REVISIONS						
ZONE	SYM	DESCRIPTION	DATE	E.M.N. NO.	DRAFT	CHKD
X		CHART REVISED, PLUG DETAIL ADDED	4/17/65			
Ø		ORIGINAL RELEASE FOR PRODUCTION	4/12/65		CJL	
A		IT 9, 10, 11, ADDED MODELS DDR-5L, DDR-5M ADDED	8/2/65	14513	R.V.K.	J.C.S. M.H.



TMC P/N	DIM A	ITEM 17	ITEM 18	ITEM 19
CA 1044 -1	62	LA107-20-P500H	LA107-15-CA1044H	LA107-20-P8009H
-2	62	2	-2	-2
-3	62	3	-3	-3
-4	62	4	-4	-4
-5	62	5	-5	-5
-6	62	6	-6	-6
-7	62	7	-7	-7
-8	62	LA107-20-P5001-8	LA107-15-CA1044-B	LA107-20-P8009-8
-9	72	-P5001-1	NOT USED	P8009-1
-10	72	-P5001-2	NOT USED	P8009-2
-11	85	LA107-20-P5001	NOTE USED	LA107-20-P8009?

REQ'D.	ITEM	PART NUMBER	DESCRIPTION	SYMBOL
X	24	TA100-1	INS TAPE, EL-FEST	
X	23	CD101-1-MW	CORD, NYLON, LACING	
X	22	BS100	SOLDER, TIN ALLOY	
X	21	PX100-1-.095	INSULATED, SLEEVING-SZ 11	
	20	MWC20(7) U96	WIRE, ELEC, INSULATED	
1	19	LA107-20-(SEE CHART)	SLEEVING, MARKER, CABLE	
1	18	LA107-15-(SEE CHART)	SLEEVING, MARKER, CABLE	
1	17	LA107-20-(SEE CHART)	SLEEVING, MARKER, CABLE	
2	16	M53420-12A	BUSHING, RUBBER	
2	15	M53420-8A	BUSHING, RUBBER	
1	14	PL212-2	CONN, PLUG, FEMALE	P5001
1	13	PL212-1	CONN, PLUG, MALE	P8009
	12	PX100-1-.375	INS, SLEEVING-SZ 3/8	
	11	MWC20(7) U9	WIRE, ELEC, INSULATED	
	10	90		
	9	2		
	8	MWC20(7) U0	WIRE, ELEC, INSULATED	
	7	MWC22(7) SJ 5	CABLE, SP, SHLD/JKT	
	6	MWC20(7) U7	WIRE, ELEC, INSULATED	
	5	91		
	4	-1		
	3	6		
	2	98		
	1	MWC20(7) U8	WIRE, ELEC, INSULATED	

THIS SYMBOL DENOTES END OF INSULATION AND NAIL DRIVING POINT. WIRE MUST BE STRIPPED 3/4" BEYOND THIS POINT AND TINNED 1/2" UNLESS OTHERWISE SPECIFIED.



THE ABOVE SYMBOL DENOTES END OF SHIELD, WHICH SHOULD BE TERMINATED AS SHOWN, LEAVING EXCESS SHIELDING AS A PIGTAIL. TIN PIGTAIL 1/4 INCH.

○ DENOTES ITEM No.
△ DENOTES PIN No.

DDR-5M	
DDR-5L	
DDR-5K	
DDR-506	
Q'TY./UNIT	MODEL USED ON
SCALE	CODE
	ASS'Y. NO.

LIST OF MATERIAL			
MATERIAL		THE TECHNICAL MATERIEL CORP.	
FINISH		MAMARONECK, NEW YORK	
		TITLE	
		CABLE ASSY. 3P, 12/C	
		AFC-HFP	
UNLESS OTHERWISE SPECIFIED DIMENSIONS ARE IN INCHES AND INCLUDE CHEMICALLY APPLIED OR PLATED FINISHES		DRAWN	DATE
		3-2-65	
		CHECKED	DATE
		J.L.	4/14/65
DECIMALS		ELECT. DES.	
.X ± .05		DATE	
.XX ± .01		4-13-65	
.XXX ± .005		DATE	
TOLERANCES		SHEET	
± 1/64		CA1044	
ANGLES ± 0° 30'		REV. LTR.	
		A	

NOTES

THE CONTENTS OF THIS DRAWING ARE THE EXCLUSIVE PROPERTY OF THE TECHNICAL MATERIEL CORP. ITS UNAUTHORIZED USE OR REPRODUCTION IN WHOLE OR IN PART IS STRICTLY FORBIDDEN.