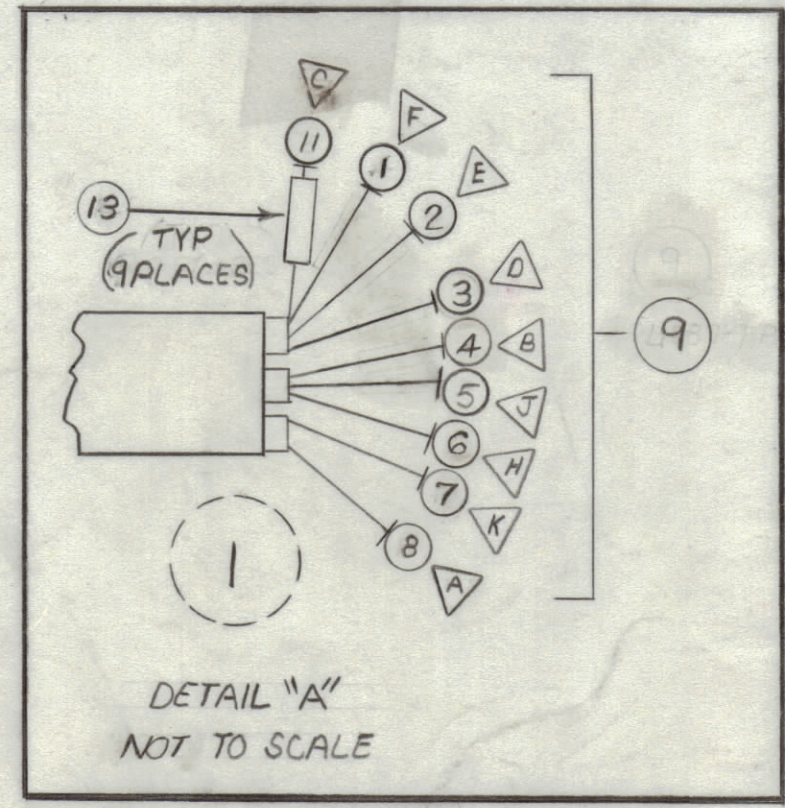
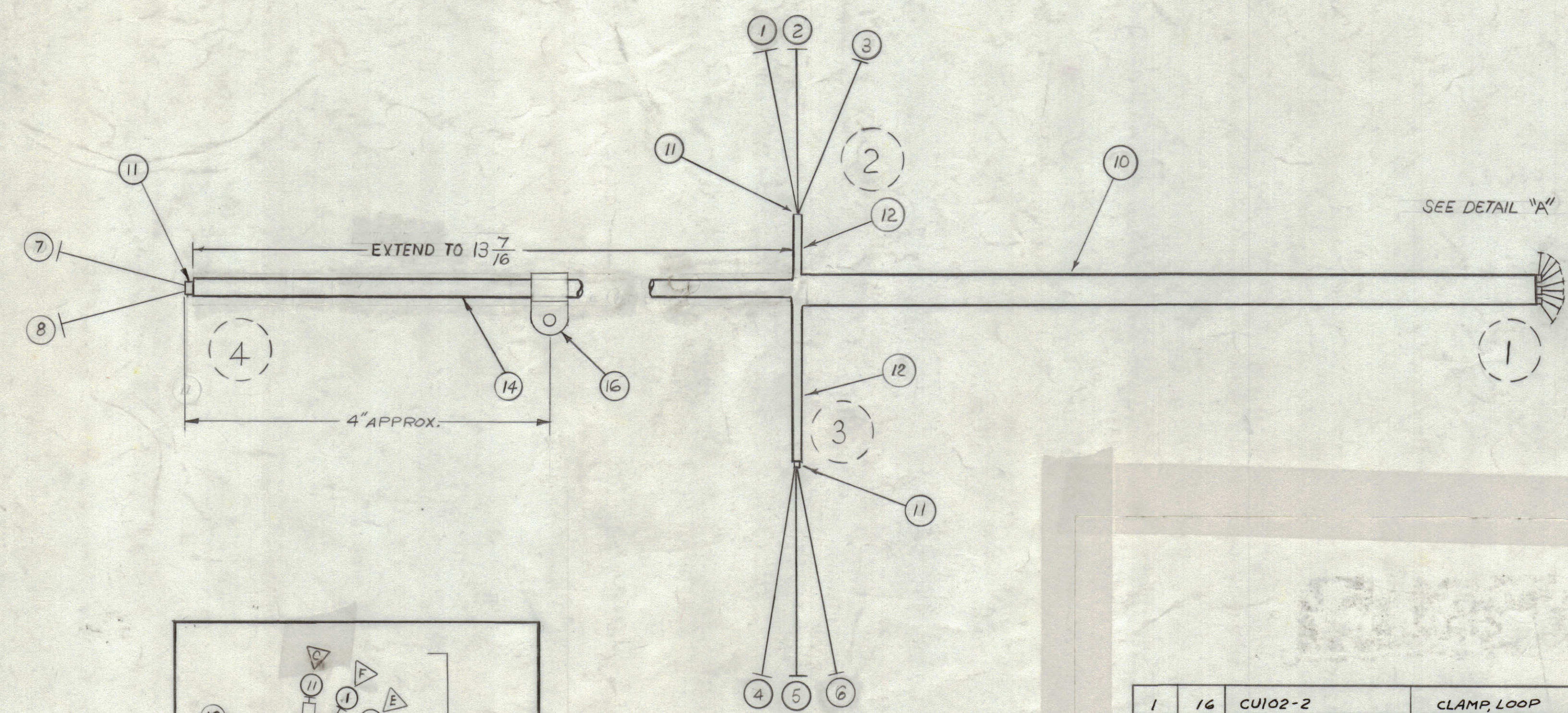


REVISIONS						
ZONE	SYM	DESCRIPTION	DATE	E.M.N. NO.	DRAFT	CHKD APPD
	X	EXP. RELEASE	4-23-66		CJL	
	Ø	ORIGINAL RELEASE FOR PRODUCTION	4-29-65		CJL	
F5	A	IT.16 CUI02-2 ADDED	12/1/65	15309	H.V.V.	<i>[Signature]</i>



THIS SYMBOL DENOTES
 END OF INSULATION & NAIL DRIVING
 POINT. WIRE MUST BE STRIPPED 3/4"
 BEYOND THIS POINT & TINNED 1/2"
 UNLESS OTHERWISE SPECIFIED,

DENOTES BREAKER POINT

 DENOTES PIN NO.

 DENOTES ITEM NO.

FROM	TO	REQ'D.	ITEM	PART NUMBER	DESCRIPTION	SYMBOL
1	4	8	LWC26 (7) U9	S5001 C	P5017 A	
1	4	7	LWC26 (7) U3	S5001 A	P5017 K	
1	3	6	LWC26 (7) U1	B5010 BROWN	P5017 H	
1	3	5	LWC26 (7) U5	B5010 GREEN	P5017 J	
1	3	4	LWC26 (7) U6	B5010 BLUE	P5017 B	
1	2	3	LWC26 (7) U7	R5132	P5017 D	
1	2	2	LWC26 (7) U2	R5132 CT	P5017 E	
1	2	1	LWC26 (7) U4	R5132	P5017 F	

BREAKOUTS: POSE
 LIST OF MATERIAL

AFCR-3		
Q'TY./UNIT	MODEL USED ON	ASS'Y. NO.
SCALE 1:1	CODE A	

UNLESS OTHERWISE SPECIFIED
 DIMENSIONS ARE IN INCHES AND INCLUDE
 CHEMICALLY APPLIED OR PLATED FINISHES

DECIMALS: .X ± .05, .XX ± .01, .XXX ± .005
 FRACTIONS: ± 1/64
 ANGLES: ± 0° 30'

THE TECHNICAL MATERIEL CORP. MAMARONECK, NEW YORK			
TITLE: CABLE, MAIN, BRANCHED, REMOTE AFCR-3			
DRAWN: <i>C. Longo</i>	DATE: 4-28-65	FINAL APPROVAL: <i>[Signature]</i>	DATE: 5/19/65
CHECKED: <i>[Signature]</i>	DATE: 5/17/65		
ELECT. DES. <i>[Signature]</i>	DATE: 5/19/65	CA1039	
MECH. DES.	DATE:	SHEET	REV. LTR. A

NOTES

THE CONTENTS OF THIS DRAWING ARE THE EXCLUSIVE PROPERTY OF THE TECHNICAL MATERIEL CORP. ITS UNAUTHORIZED USE OR REPRODUCTION IN WHOLE OR IN PART IS STRICTLY FORBIDDEN.

CA1039
A