

IF IT IS FOUND DESIRABLE TO CHANGE ANY TOLERANCE OR OTHER DETAIL SPECIFIED ON THIS DRAWING NOTIFY THE PURCHASER PROMPTLY.

MAXIMUM ALLOWABLE TOLERANCES HAVE BEEN DETERMINED AND DEVIATIONS WILL BE CAUSE FOR REJECTION. REMOVE ALL BURRS AND SHARP EDGES

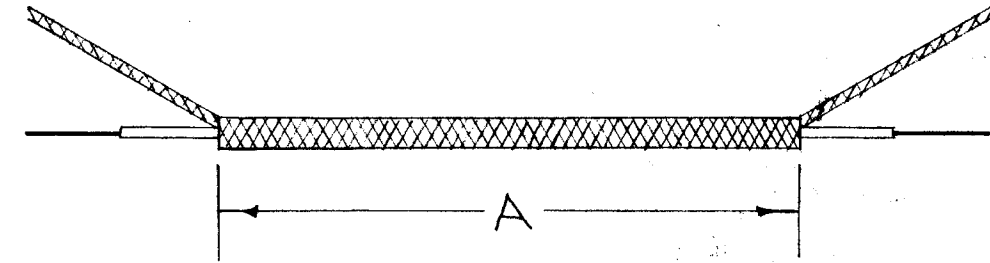
NOTICE TO PERSONS RECEIVING THIS DRAWING

THE TECHNICAL MATERIEL CORPORATION claims proprietary right in the material disclosed hereon. This drawing is issued in confidence for engineering information only and may not be reproduced or used to manufacture anything shown hereon without permission from THE TECHNICAL MATERIEL CORPORATION to the user. This drawing is loaned for mutual assistance and is subject to recall at any time.

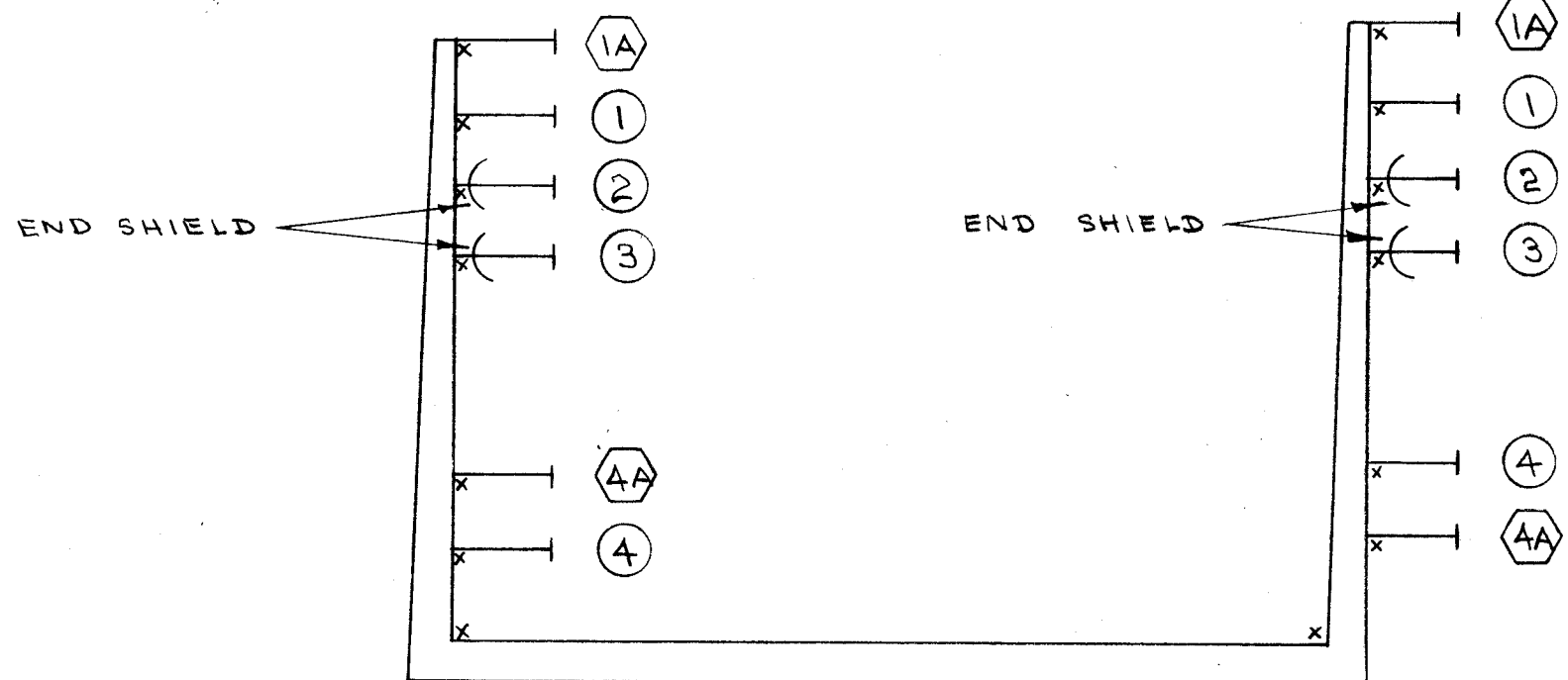
Property of:

THE TECHNICAL MATERIEL CORPORATION
MAMARONECK, NEW YORK

CA-149 A



ITEM	LENGTH A
1	10 1/2
2	9 3/4
3	9
4	5 3/4



PREPARE SHIELDS AS SHOWN ABOVE.
CUT CABLE LENGTHS AS SHOWN BELOW

NO'S. IN ○ INDICATE WIRE
NO'S IN ⬡ INDICATE SHIELD

CRIMP ON ITEM 5 AFTER LACING

X	7	GD-100-1	CORD LACING, NYLON	
X	6	BS-100	SOLDER, SOFT	
12	5	TE-120-2	LUG, SPADE	
8 1/2	4	WI-101-1	CABLE, SHIELD FLEX.	
10 3/4	3	WI-101-1	CABLE, SHIELD FLEX.	
11 1/2	2	WI-101-1	CABLE, SHIELD FLEX.	
13 1/4	1	WI-101-1	CABLE, SHIELD FLEX.	

REQ.	ITEM	PART NO.	DESCRIPTION	SYMBOL
	4		THE TECHNICAL MATERIEL CORP. MAMARONECK, NEW YORK	
	4	4	CABLE, FFR & AMD	
			EXTERNAL CONNECTIONS	
			C.D.D. 3-17-53	
			RE DRAWN	ELEC. DES. APP. MECH. DES. APP.
			4/22/54	
			1/26/53	
			CHECKED	FINAL APPROVAL
				CA-149 A

A	2	ITEM 5 WAS TE-120-1	3/17/53	1	CDD	JAR	PJG
	1	REDRAWN					
ISSUE	ITEM	CHANGED FROM	DATE	CN. NO.	DRAFTS	CHECKER	ENG. APP.
TOLERANCES		SCALE: #					
ALL OTHERS	DEC. DIM. ±	DRILL, PUNCH, COMMERCIAL STOCK SIZES AND MANUFACTURERS TOLERANCES ARE NOT INCLUDED.					
	FRAC. DIM. ± 1/4						
	ANGULAR DIM. ±						

1	AMD-2		A-736	4/22/54
1	FFR-AMD	104		1/26/53
REQ. QTY. ONLY	MODEL	PROJECT NO.	ASS'Y. NO.	DATE
USED ON				