

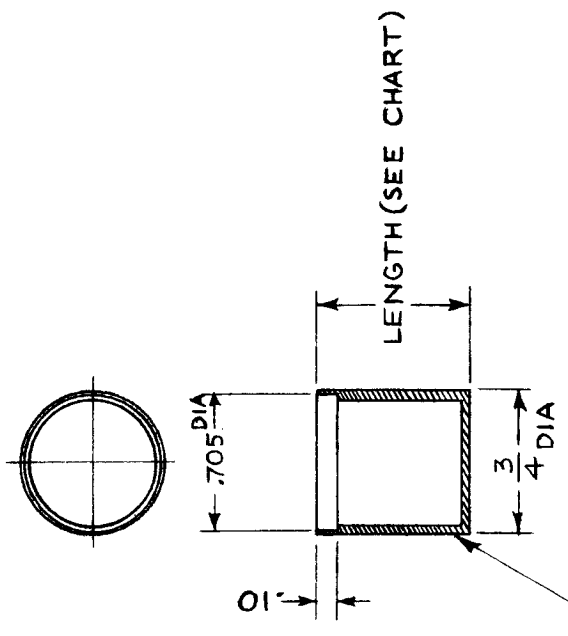
STANDARD DRAWING

BX-204

REQ. PER UNIT	1
USED ON	TRX-1
MODEL	TRX-1
ASS'Y. NO.	2-27-63
DATE	2-27-63

THE CONTENTS OF THIS DRAWING ARE THE EXCLUSIVE PROPERTY OF THE TECHNICAL MATERIEL CORP. ITS UNAUTHORIZED USE FOR REPRODUCTION IN WHOLE OR IN PART IS STRICTLY FORBIDDEN.

TMC PART NO.	MFGR PART NO.	LENGTH	COLOR
BX-204-1	E1041-1	5/8	BLACK
BX-204-2	E1041-2	3/4	BLACK
BX-204-3	E1041-3	1/2	BLACK
BX-204-4	E1041-4	7/16	BLACK



MATING HEADER: TMC P/N PO-261

SPECIFICATIONS

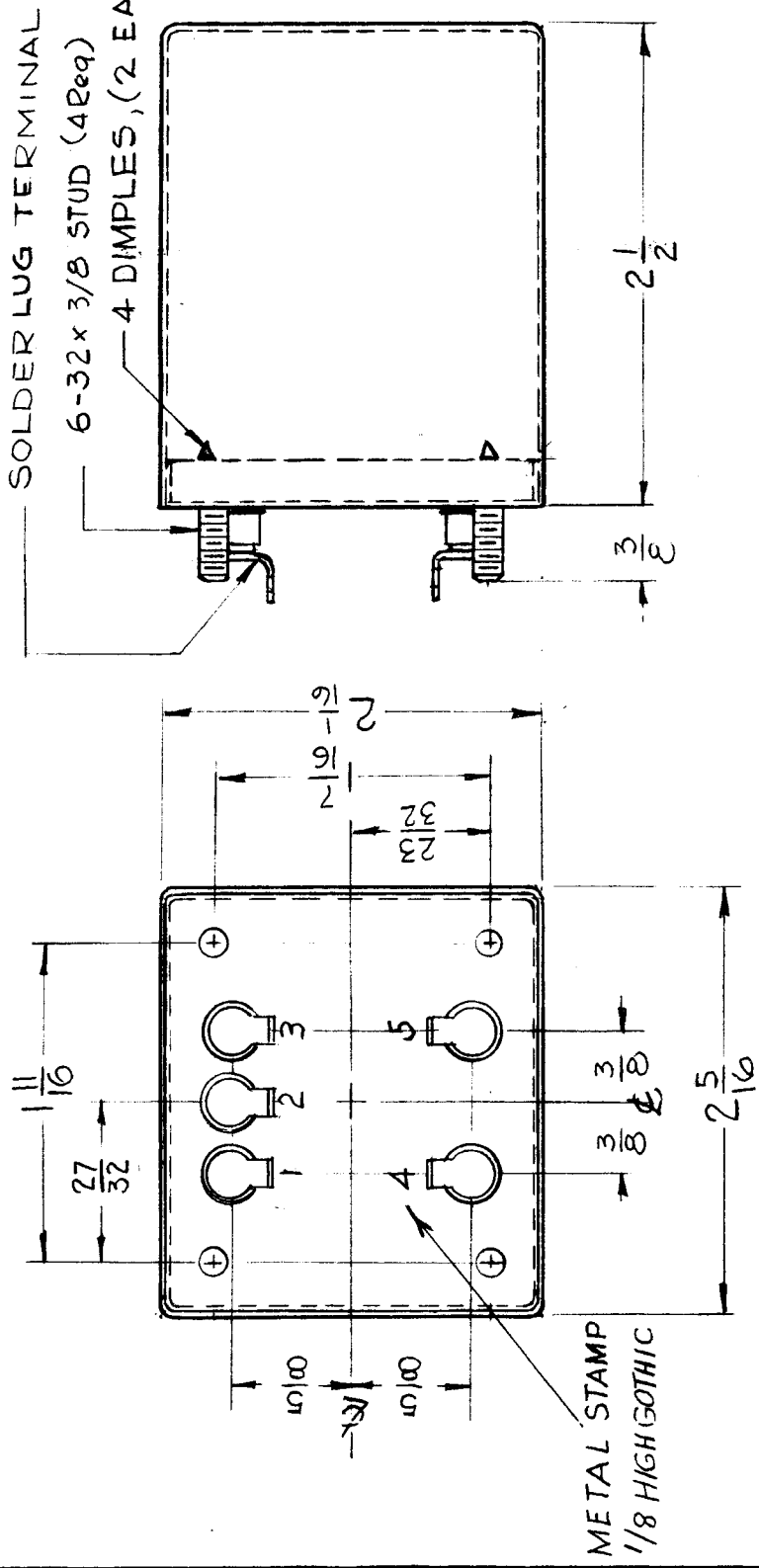
ELECTRICAL:

1. TEMP. RANGE: CONTINUOUS OPERATION UP TO 400°F.

REQ. ITEM	PART NO.	J. STRUMER DESCRIPTION	SYMBOL
	#	THE TECHNICAL MATERIEL CORP. MAMARONECK. NEW YORK	
	EPOXY #105	CASE, CYLINDRICAL	
		PLASTIC	
TYPE & TEMPER	HEAT TREAT. SPEC.	DRAWN	CHECKED
SEE CHART		<i>JMA</i>	<i>JMA</i>
FINISH & SPEC. NO.		DATE	FINAL APPROVAL
		3/19/63	<i>BP</i>
			BX-204

THE CONTENTS OF THIS DRAWING ARE THE EXCLUSIVE PROPERTY OF THE TECHNICAL MATERIEL CORP. ITS UNAUTHORIZED USE FOR REPRODUCTION IN WHOLE OR IN PART IS STRICTLY FORBIDDEN.			REQ. PER UNIT 1	USED ON			BX-207	A
			MODEL TR-181	ASSY. NO. A-3170	DATE 5-31-63			

TMC PART NO. TE-134
 SOLDER LUG TERMINAL, 5 REQ'D
 6-32 x 3/8 STUD (4Req)
 4 DIMPLES, (2 EA. SIDE)



REF: BX 100-8S

REQ. ITEM	PART NO.	DESCRIPTION	SYMBOL
.025 THK		POSE	
STEEL		THE TECHNICAL MATERIEL CORP. MAMARONECK. NEW YORK	
MATERIAL		CASE & COVER	
HOT TINNED		G.D.L. <i>[Signature]</i> 4T4 6.14.63	
FINISH & SPEC. NO.	HEAT TREAT. SPEC.	CHECKED	FINAL APPROVAL
		<i>[Signature]</i>	BX-207 A
DATE	CH. NO.	DRAFTS	CHECKER
2/18/64	10895	AM.	T.R. <i>[Signature]</i>
DESCRIPTION		SCALE	
A SEE EMN# 10895		1:1	
UNLESS OTHERWISE SPECIFIED DIMENSIONS ARE IN INCHES AND INCLUDE CHEMICALLY APPLIED OR PLATED FINISHES			
TOLERANCES		FRACTIONS	
±.05		± 1/64	
.XX ± .01		ANGLES	
.XXX ± .005		± 0° 30'	

THE CONTENTS OF THIS DRAWING ARE THE EXCLUSIVE PROPERTY OF THE TECHNICAL MATERIEL CORP. ITS UNAUTHORIZED USE FOR REPRODUCTION IN WHOLE OR IN PART IS STRICTLY FORBIDDEN.

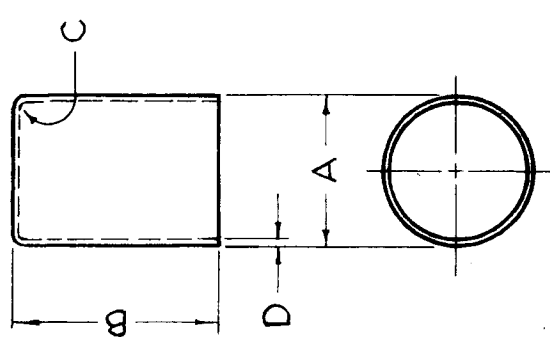
REQ. PER UNIT

USED ON

BX-208 0

TMC PT. NO. MFG. PT. NO. A B C D MATERIAL FINISH

BX-208-1 HU-1523 15/16 55/64 1/16 .019 2 NONE

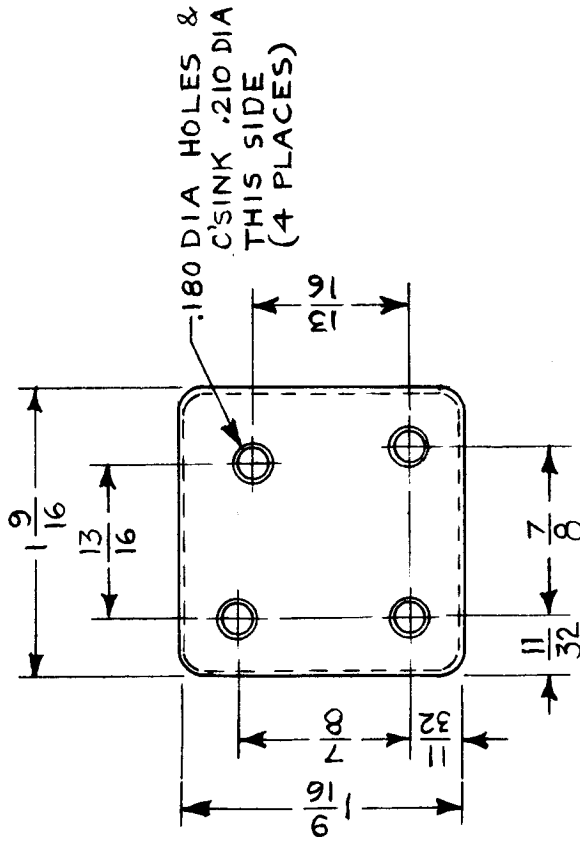


MATERIAL CHART

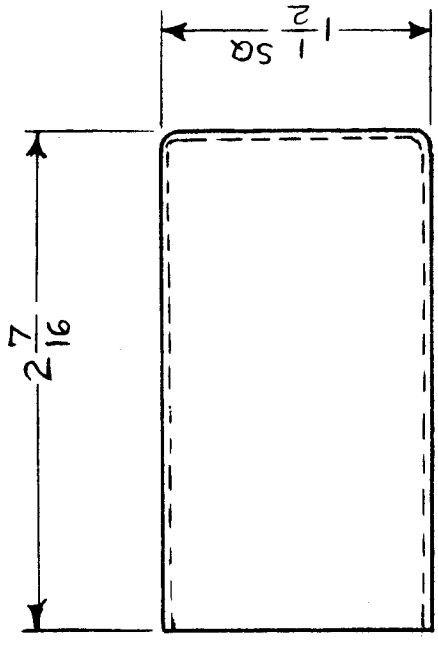
1	ALUMINUM	5	MUMETAL
2	BRASS	6	STAINLESS STEEL
3	COPPER	7	NICKEL SILVER
4	STEEL		

REQ. ITEM	PART NO.	F. BUDETTI	DESCRIPTION	SYMBOL		
			THE TECHNICAL MATERIEL CORP. MAMARONECK, NEW YORK			
	STOCK SIZE		CASE, ROUND			
	MATERIAL					
	TYPE & TEMPER	John C. Biele	DRAWN	AA		
	HEAT TREAT. SPEC.		CHECKED	APC		
	FINISH & SPEC. NO.		ELEC. DES. APP. MECH. DES. APP.	BX-208 0		
SYM	DESCRIPTION	DATE	CH. NO.	DRAFTS	CHECKER	ENG. APP.
0	ORIGINAL RELEASE	5.18.64		ASB		NONE
UNLESS OTHERWISE SPECIFIED DIMENSIONS ARE IN INCHES AND INCLUDE CHEMICALLY APPLIED OR PLATED FINISHES						
DECIMALS						
FRACTIONS						
TOLERANCES						
SCALE						
CODE						
S.401-26						

REQ. PER UNIT	1	USED ON	BX-210	A
MODEL	FX-196	ASSY. NO.	A-3300	DATE
		9/18/63		



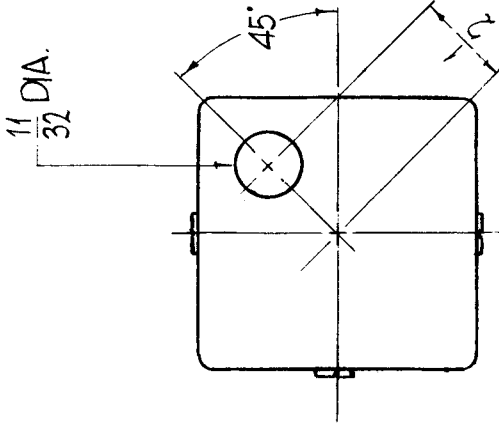
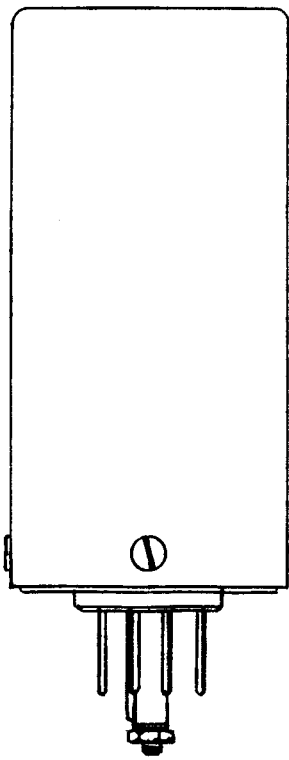
COVER



CASE

4	1	PL-217-1-9	PLUG, TIP, SUB-MINIATURE	SYMBOL
REQ. ITEM	PART NO.	M. GELLMAN DESCRIPTION		
STOCK SIZE		THE TECHNICAL MATERIEL CORP. MAMARONECK, NEW YORK		
BRASS		CASE & COVER ASSY		
MATERIAL				
TYPE & TEMPER	HEAT TREAT. SPEC.	DRAWN	CHECKED	FINAL APPROVAL
FINISH & SPEC. NO.		M. R. Bates	11/14/63	B. J.
S-401-28 (HU-4500)		BX-210		
C		A		

REQ. PER UNIT	USED ON	BX-2110	
1	MODEL	GPT-200K (AT-05)	
	ASSY. NO.	A-3257	
	DATE	10-14-63	



NOTE - REMOVE COVER BEFORE DRILLING

1	1	PO-106-3T	PLUG IN SOCKET, TURRET	SYMBOL
REQ. ITEM	PART NO.	DESCRIPTION		
		THE TECHNICAL MATERIEL CORP. MAMARONECK, NEW YORK		
	STOCK SIZE	MODIFICATION		
	MATERIAL	PLUG IN SOCKET, TURRET		
	TYPE & TEMPER	HEAT TREAT. SPEC	DRAWN	CHECKED
			John C Biele	aa
	FINISH & SPEC. NO.			FINAL APPROVAL
				aa
				MECH. DES. APP.
				BX-2110
				MECH. DES. APP.

0 ORIGINAL RELEASE FOR PRODUCTION

DATE 5-13-64

CH. NO. 0

DRAFTS A.M.

SCALE 1" = 1"

DESCRIPTION

UNLESS OTHERWISE SPECIFIED DIMENSIONS ARE IN INCHES AND INCLUDE CHEMICALLY APPLIED OR PLATED FINISHES

TOLERANCES

FRACTIONS ± 1/64 ANGLES ± 0° 30'

DECIMALS .X ± .05 .XX ± .01 .XXX ± .005

CODE A

REQ. PER UNIT
CSS-2 (RAK44)

USED ON
ASSY. NO. 10-27-64

MODEL
DATE

DATE

DATE

DATE

DATE

DATE

DATE

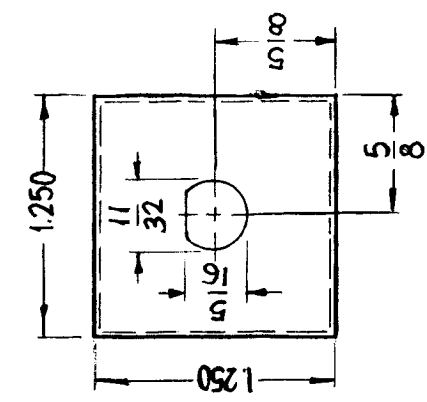
DATE

DATE

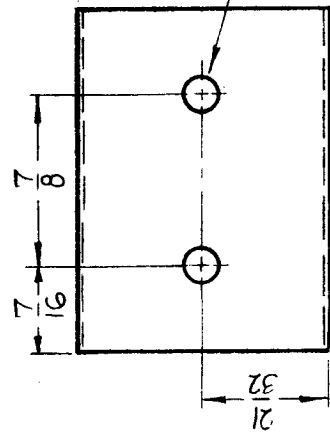
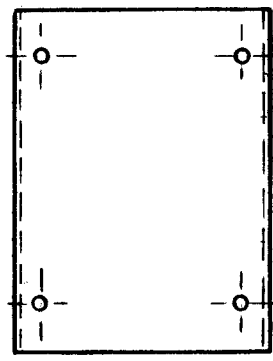
DATE

DATE

DATE



COVER
(2 REQ.)

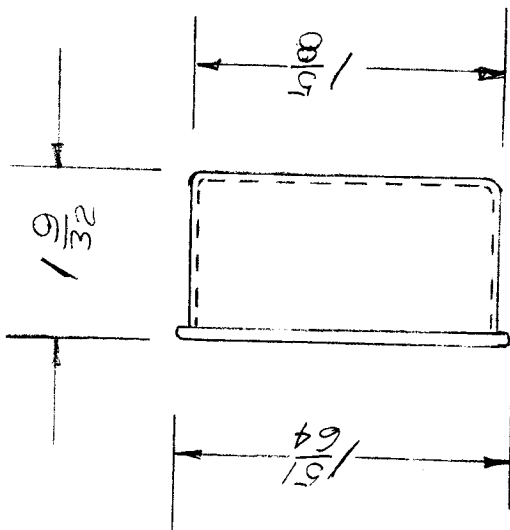


BOX (1 REQ.)

NOTE: USE CASE BX100-3, NO COVERS

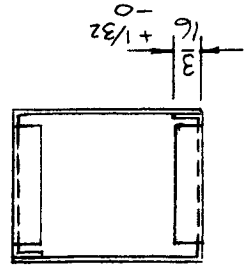
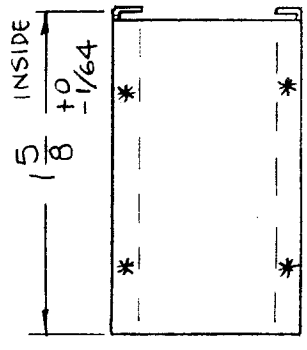
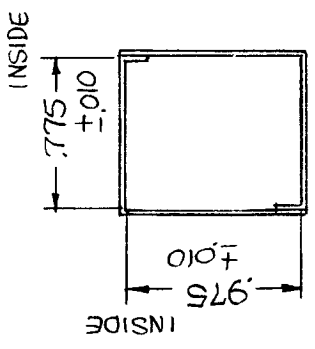
SYM	DESCRIPTION	DATE	CH. NO.	DRAFTS	CHECKER	ENG. APP.	
Ø	OR ORIGINAL RELEASE FOR PRODUCTION	10-29-64	Ø	1/2			
X	EXP. RELEASE						
UNLESS OTHERWISE SPECIFIED DIMENSIONS ARE IN INCHES AND INCLUDE CHEMICALLY APPLIED OR PLATED FINISHES		SCALE 1:1					
TOLERANCES	FRACTIONS	CODE					
.X ± .05	± 1/64	A					
.XX ± .01	ANGLES ± 0° 30'						
.XXX ± .005							
REQ. ITEM		PART NO.		DESCRIPTION			SYMBOL
2		1 NT129-440-1		NUT, PLAIN, SPLAIN			
				M.BELLEFEVILLE			
Ø		.019-.025 GAUGE		STOCK SIZE			THE TECHNICAL MATERIEL CORP. MAMARONECK. NEW YORK
				STEEL			CASE # COVERS
				MATERIAL			
TYPE & TEMPER		HEAT TREAT. SPEC.	DRAWN		CHECKED	FINAL APPROVAL	
		HOT-TINNED					
FINISH & SPEC. NO.		FINISH & SPEC. NO.					
							BX 214 Ø

REQ. PER UNIT 1	MODEL COPA	USED ON ASS'Y. NO.	DATE 12-7-64	Bx215	Ø



SYM	DESCRIPTION	DATE	CH. NO.	DRAFTS	CHECKER	ENG. APP.	REQ. ITEM	PART NO.	DESCRIPTION	SYMBOL
Ø	ORIGINAL RELEASE	12/14/65	Ø						THE TECHNICAL MATERIEL CORP. MAMARONECK. NEW YORK	
	UNLESS OTHERWISE SPECIFIED DIMENSIONS ARE IN INCHES AND INCLUDE CHEMICALLY APPLIED OR PLATED FINISHES	SCALE						ALUMINUM	CAN	
	DECIMALS .X ± .05 .XX ± .01 .XXX ± .005									
	FRACTIONS ± 1/64 ANGLES ± 0° 30'									
	TOLERANCES	CODE	S 401-28 (HU 8085-1932AL)							
		TYPE & TEMPER								
		HEAT TREAT. SPEC.								
		MATERIAL								
		DRAWN								
		CHECKED								
		FINAL APPROVAL								
		ELEC. DES. APP.								
		MECH. DES. APP.								
		FINISH & SPEC. NO.								

REQ. PER UNIT	USED ON	BX 218	Ø
MODEL	ABBY. NO.	DATE	
KMCU-1		12-13-65	



REQ. ITEM	PART NO.	DESCRIPTION	SYMBOL
	.025 THK	BUTLER	
	STOCK SIZE	THE TECHNICAL MATERIEL CORP. MAMARONECK. NEW YORK	
	H-NON MAG.	CAN, RELAY	
	MATERIAL		
	HYDROGEN ANNEALED	<i>MS</i>	<i>MS</i>
	TYPE & TEMPER	DRAWN	CHECKED
	HEAT TREAT. SPEC.		FINAL APPROVAL
	FINISH & SPEC. NO.		BX 218
	ELEC. DES. APP.		MECH. DES. APP.

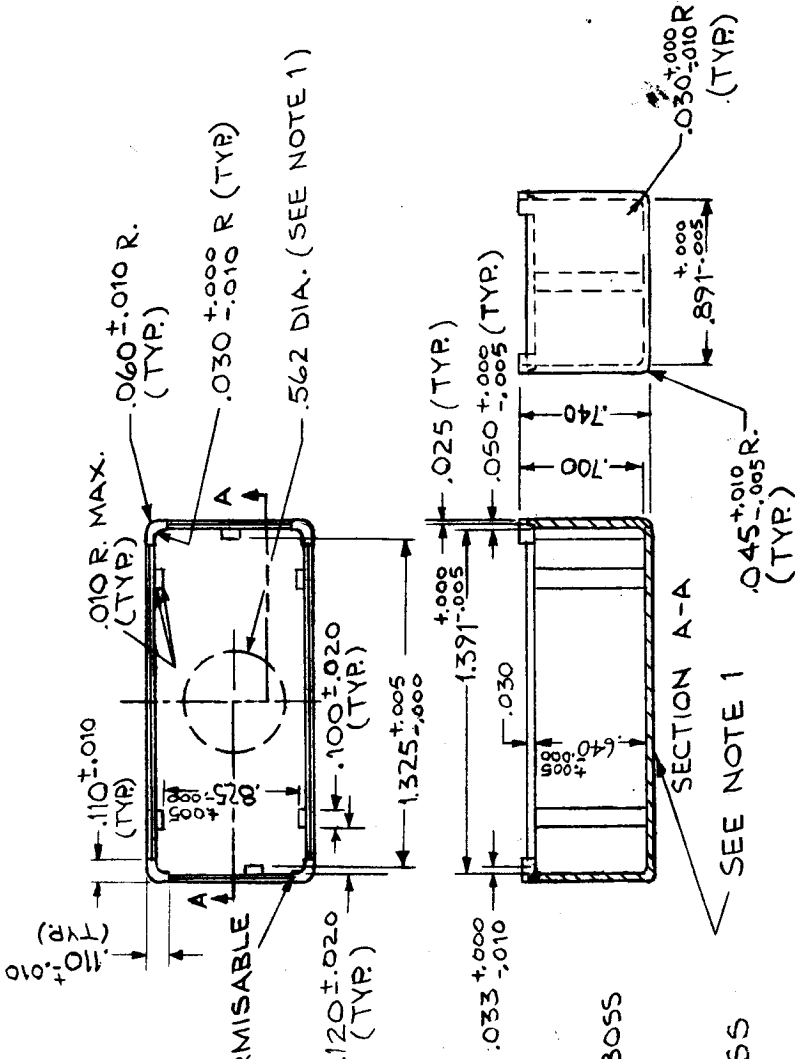
DATE	2.10.67	CH. NO.	X	DRAFTS	RME	CHECKER	ENG. APP.
SCALE	1:1						
CODE	S401-448						
	(A-101025)						

DESCRIPTION	ORIGINAL RELEASE FOR PRODUCTION
DESCRIPTION	EXP. RELEASE
UNLESS OTHERWISE SPECIFIED DIMENSIONS ARE IN INCHES AND INCLUDE CHEMICALLY APPLIED OR PLATED FINISHES	
FRACTIONS	± 1/64
ANGLES	± 0° 30'
TOLERANCES	
DECIMALS	.X ± .05
	.XX ± .01
	.XXX ± .005

STANDARD DRAWING

REQ. PER UNIT	MODEL	USED ON
		ASSY. NO.
		DATE
		7-15-66

BX 219 Ø



RADIUS PERMISSIBLE (TYR)

NOTES:

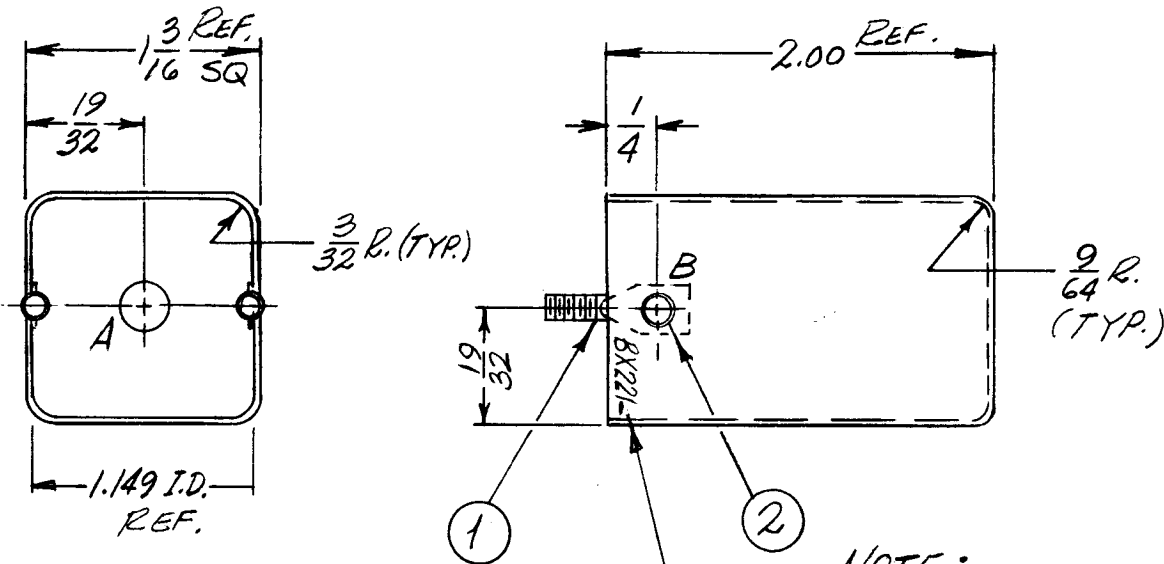
- 1 - TO BE PLAIN AS SHOWN OR HAVE EMOSS NUMBERS IN THIS AREA.
- 2 - MATERIAL : DIALLYL PHTHALATE, GLASS FILLED MIL - M - 18794
- 3 - FINISH : COLOR BLACK

REQ. ITEM	PART NO.	DESCRIPTION	SYMBOL
		THE TECHNICAL MATERIEL CORP. MAMARONECK. NEW YORK	
		CASE, PLASTIC	
		SEE NOTE 2	
		MATERIAL	
		STOCK SIZE	
		TYPE & TEMPER	
		HEAT TREAT. SPEC.	
		DRAWN	
		CHECKED	
		FINAL APPROVAL	
		FINISH & SPEC. NO.	
		ELEC. DES. APP.	
		MECH. DES. APP.	

ORIGINAL RELEASE 12-13-66
 COMPLETELY REVISED 1-6-67 X1 RME
 SCALE DO NOT SCALE
 CODE C
 S 401-341 (50130)
 TOLERANCES ± 1/64 ANGLES ± 0° 30'

APPLICATION			REVISIONS						
QTY	MODEL USED ON	ASS'Y NO.	LTR	DESCRIPTION	DATE	E.M.N.NO	DRAFT	CHKD	APPD
12	VLEC-1	A4644	X	EXP. RELEASE	10-2-67	-	HLL	MW	MW
			Ø	ORIG. RELEASE FOR PROD.	10-12-67	Ø	R.G.	MW	

HOLE	DESCRIPTION	REQ.
A	1/4 DIA.	1
B	.141 DIA.	2



MARK TMC PT. NO. 1/8 HIGH
GOTHIC W/LATEST REV. LETTER.

NOTE:

ASSEMBLE ITEM (1) TO
INSIDE WALLS OF CASE
WITH ITEM (2). (TYP. 2 PLACES)

MFG. CODE: S401-28 (HU4380 BR 2.00) BLANK CAN

MATERIAL - .019 THK. SOFT BRASS PER QQ-B-613-COMP. 4

REF:	QTY	QTY	PART NUMBER	DESCRIPTION	SYM.
M55204 (COVER)	2	2	EY100-1	EYELET, METAL	
	2	1	SC106-1	BOLT, EYE-SPADE	

UNLESS OTHERWISE SPECIFIED
DIMENSIONS ARE IN INCHES
AND INCLUDE CHEMICALLY APPLIED
OR PLATED FINISHES

DECIMALS	FRACTIONS
.X ± .05	1/64
.XX ± .01	TOLS. ANGLES
.XXX ± .005	0° .30'

MATERIAL	SEE NOTE
FINISH	BRASS PLATED
	S401-451

MARTINENGO	
FINAL APPROVAL	DATE
MECH. DES.	DATE
ELECT. DES.	DATE
CHECKED	DATE
DRAWN	DATE

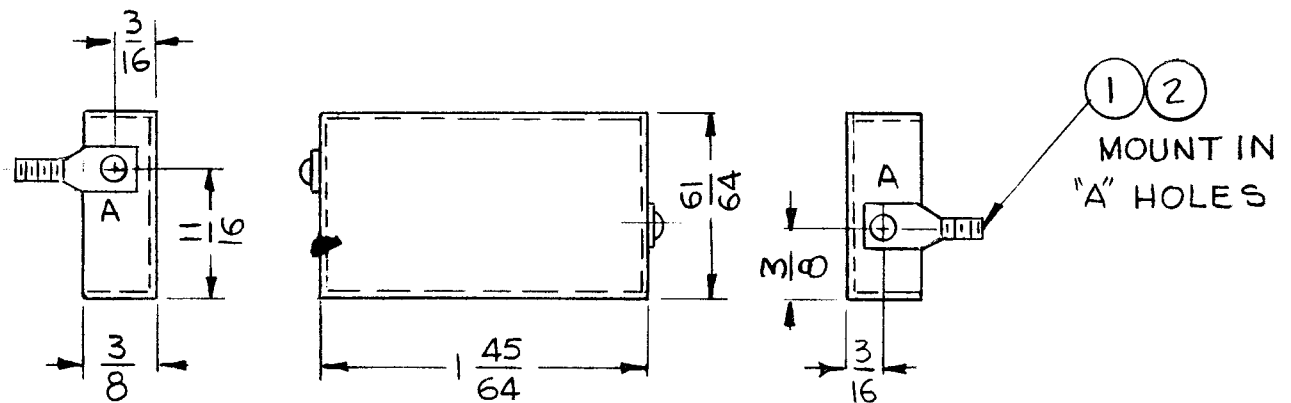
LIST OF MATERIAL

THE TECHNICAL MATERIEL CORP.
MAMARONECK, NEW YORK

CASE, TUNING COIL

NOTICE TO PERSONS RECEIVING THIS DRAWING: THE TECHNICAL MATERIEL CORPORATION claims proprietary right in the material disclosed herein. This drawing is issued in confidence for engineering information only and may not be reproduced or used to manufacture anything shown herein without permission from THE TECHNICAL MATERIEL CORPORATION to the user. This drawing is loaned for mutual assistance and is subject to recall at any time.				SIZE	CODE IDENT. NO.	DWG NO.	ISSUE
				A	82679	BX221	Ø
SCALE		1:1		SHEET		OF	

APPLICATION			REVISIONS							
QTY	MODEL USED ON	ASS'Y NO.	LTR	DESCRIPTION	DATE	E.M.N.NO	DRAFT	CHKD	APPD	
1	MMX-()	A4505	X	EXP RELEASE	6.6.67	A	WHW	WHW	WHW	
1	CHG-()4	A4505	X1	NOTE "OBSOLETE" ADDED	8-2-67	A	G.D.L	WHW	WHW	
			Ø	ORIG RELEASE FOR PROD	8-2-67	Ø	RG	WHW	WHW	
			A	COMPLETELY REVISED & UP DATED. NOTE OBSOLETE DEL.	12-29-67	18685	G.D.L	WHW	OP	



- HOLE -
A - .067 DIA. 2 REQ.

UNLESS OTHERWISE SPECIFIED:

1. USE MATERIAL THICKNESS FOR MAXIMUM RADIUS ON ALL BENDS
2. ALL ANGULAR BENDS 90 DEGREES
3. REMOVE ALL BURRS AND SHARP EDGES
4. MOUNT INSERTS AFTER FINISHING

REQ'D	ITEM	PART NUMBER	DESCRIPTION	SYM.
2	2	EY101-5	EYELET, MTL	A
2	1	SC106-3	BOLT, EYE SPADE	A

O. POSE		LIST OF MATERIAL SK3246 MS 3		
FINAL APPROVAL	DATE	THE TECHNICAL MATERIEL CORP. MAMARONECK, NEW YORK SHIELD, OUTPUT, RF		
MECH. DES.	DATE			
ELECT. DES.	DATE			
CHECKED	DATE			
DRAWN	DATE			

UNLESS OTHERWISE SPECIFIED DIMENSIONS ARE IN INCHES AND INCLUDE CHEMICALLY APPLIED OR PLATED FINISHES

DECIMALS FRACTIONS
.X ± .05 TOLS. 1/64
.XX ± .01 ANGLES
.XXX ± .005 0°-30'

MATERIAL
.022 C.R. COPPER

FINISH
TIN PLATE

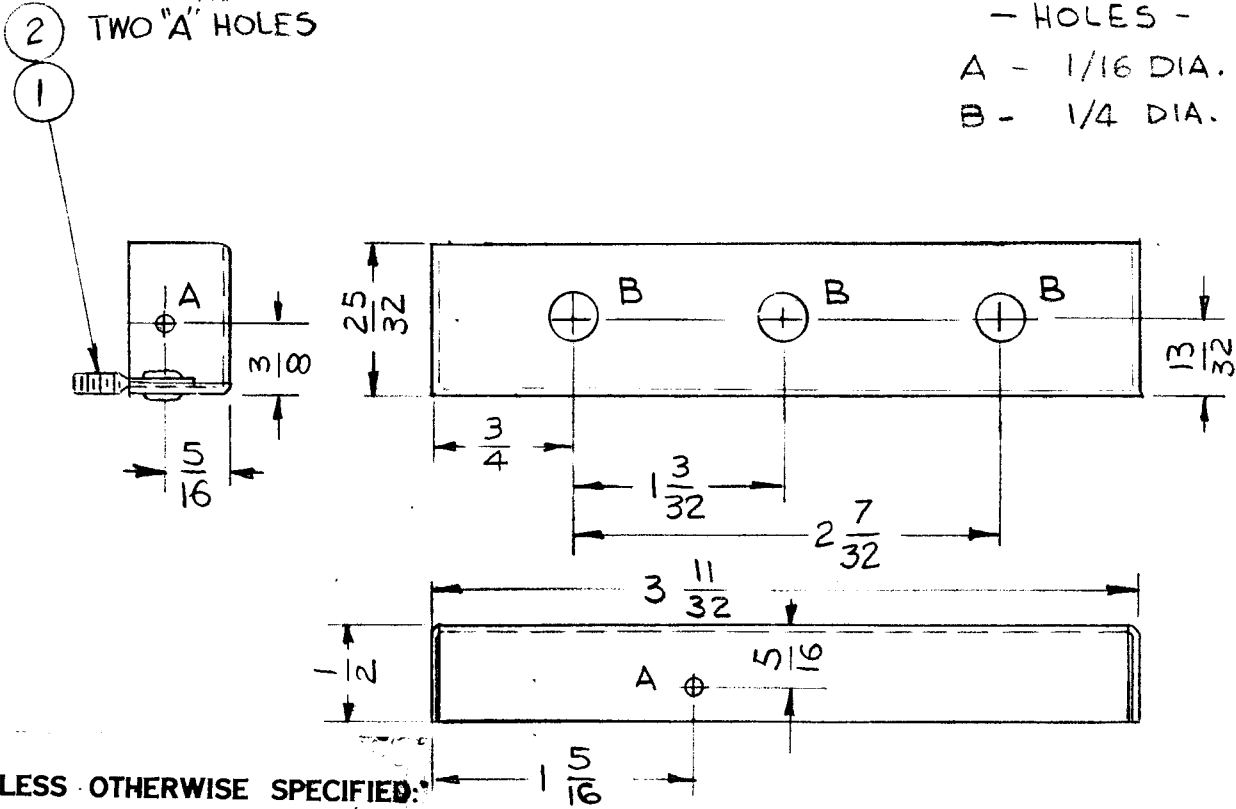
S401-451

NOTICE TO PERSONS RECEIVING THIS DRAWING THE TECHNICAL MATERIEL CORPORATION claims proprietary right in the material disclosed hereon. This drawing is issued in confidence for engineering information only and may not be reproduced or used to manufacture anything shown hereon without permission from THE TECHNICAL MATERIEL CORPORATION to the user. This drawing is loaned for mutual assistance and is subject to recall at any time.	SIZE	CODE IDENT. NO.	DWG NO.	ISSUE
	A	82679	BX224	A
SCALE 1:1		SHEET		OF

APPLICATION			REVISIONS						
QTY	MODEL USED ON	ASS'Y NO.	LTR	DESCRIPTION	DATE	E.M.N.NO	DRAFT	CHKD	APPD
1	MMX-()	4504	X	EXP. RELEASE	12-20-67	-	GDL		
1	CHG-() 4	4504	Ø	ORIG. RELEASE FOR PROD.	1-10-68		R.G.		
1	VOX-7	4504	A	MODIFY	9-22-77	21578	PH	K.P.	

MOUNT IN TWO "A" HOLES

- HOLES -
 A - 1/16 DIA. 2REQ.
 B - 1/4 DIA. 3REQ.



UNLESS OTHERWISE SPECIFIED:

1. USE MATERIAL THICKNESS FOR MAXIMUM RADIUS ON ALL BENDS
2. ALL ANGULAR BENDS 90 DEGREES
3. REMOVE ALL BURRS AND SHARP EDGES
4. MOUNT INSERTS AFTER FINISHING

REQ'D	ITEM	PART NUMBER	DESCRIPTION	SYM.
2	2	EY101-5	EYELET, MTL	A
2	1	SC106-3	BOLT, EYE-SPADE	A

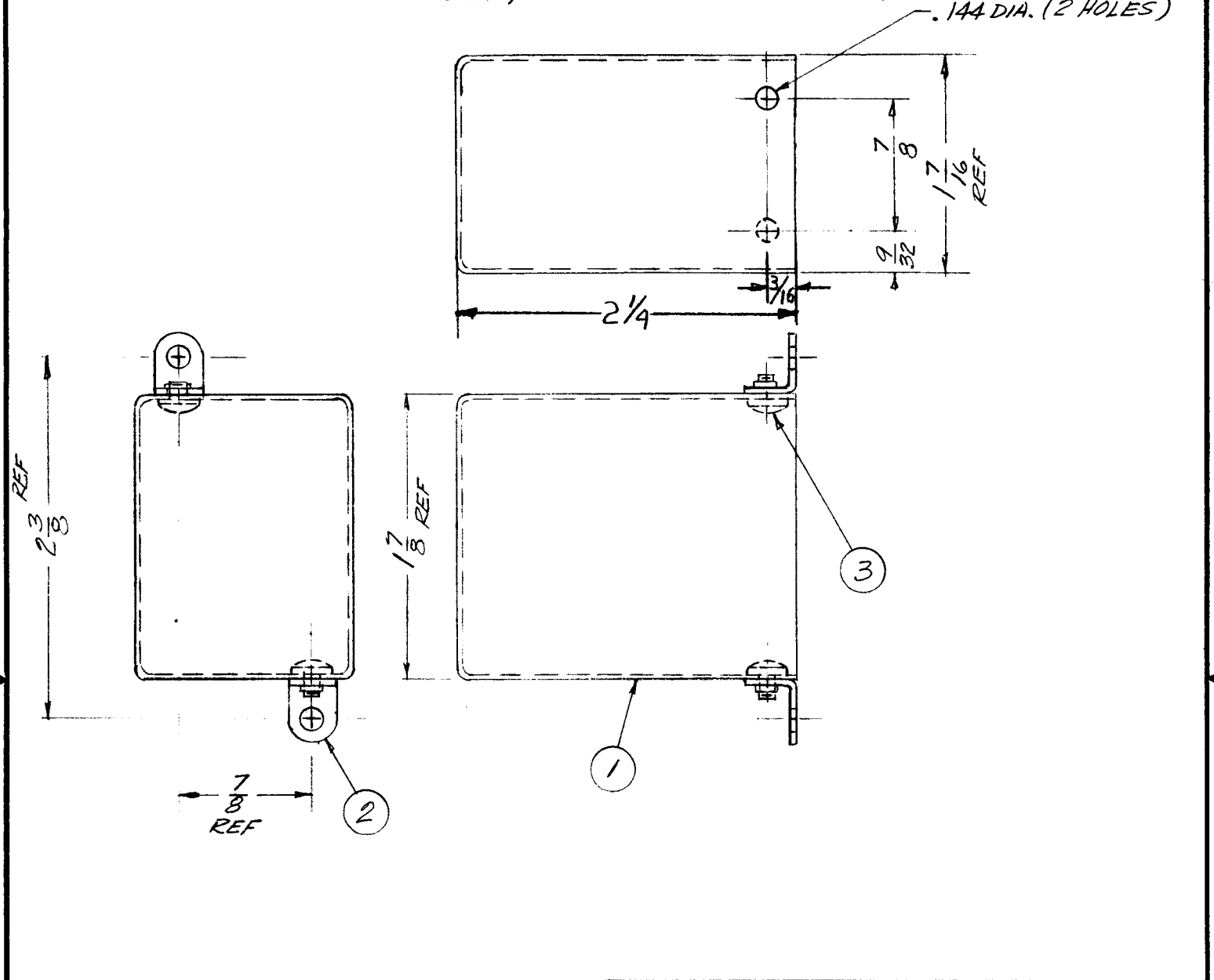
UNLESS OTHERWISE SPECIFIED DIMENSIONS ARE IN INCHES AND INCLUDE CHEMICALLY APPLIED OR PLATED FINISHES

O. POSE		LIST OF MATERIAL		SK 3246-C2
FINISH APPROVAL	DATE	THE TECHNICAL MATERIEL CORP.		
MECH. DES.	DATE	MAMARONECK, NEW YORK		
ELECT. DES.	DATE	COVER, SHIELD RF		
CHECKED	DATE			
DRAWN	DATE			

MATERIAL .022 C.R COPPER
 FINISH TIN PLATE
 S401-451

NOTICE TO PERSONS RECEIVING THIS DRAWING THE TECHNICAL MATERIEL CORPORATION claims proprietary right in the material disclosed hereon. This drawing is issued in confidence for engineering information only and may not be reproduced or used to manufacture anything shown hereon without permission from THE TECHNICAL MATERIEL CORPORATION to the user. This drawing is loaned for mutual assistance and is subject to recall at any time.	SIZE	CODE IDENT. NO.	DWG NO.	ISSUE
	A	82679	BX 227	A
SCALE 1:1		S401-451	SHEET	OF

APPLICATION			REVISIONS							
QTY	MODEL USED ON	ASS'Y NO.	LTR	DESCRIPTION	DATE	E.M.N.NO	DRAFT	CHKD	APPD	
1	GPTR10K ()	AF109	Ø	ORIGINAL RELEASE	5/3/73		CS			



REQ'D	ITEM	PART NUMBER	DESCRIPTION	SYM.
2	3	SCBP0632BN3	SCREW	
2	2	TE 167	LUG, ANGLE, THREADED	
1	1	BX 102-1	CAN	

UNLESS OTHERWISE SPECIFIED DIMENSIONS ARE IN INCHES AND INCLUDE CHEMICALLY APPLIED OR PLATED FINISHES

DECIMALS	FRACTIONS
.X ± .05	1/64
.XX ± .01	ANGLES
.XXX ± .005	0° - 30'

MATERIAL

FINISH S404
YELLOW IRIDIOTE

LIST OF MATERIAL			
FINAL APPROVAL	DATE	THE TECHNICAL MATERIEL CORP. MAMARONECK, NEW YORK SHIELD CAN ASSY	
MECH. DES. J. ANGER	DATE 9/23/69		
ELECT. DES.	DATE		
CHECKED	DATE		
DRAWN J. ANGER	DATE 9/23/69		

NOTICE TO PERSONS RECEIVING THIS DRAWING THE TECHNICAL MATERIEL CORPORATION claims proprietary right in the material disclosed hereon. This drawing is issued in confidence for engineering information only and may not be reproduced or used to manufacture anything shown hereon without permission from THE TECHNICAL MATERIEL CORPORATION to the user. This drawing is loaned for mutual assistance and is subject to recall at any time.	SIZE A	CODE IDENT. NO. 82679	DWG NO. BX 232	ISSUE Ø
	SCALE 1 : 1		SHEET OF	