

5

4

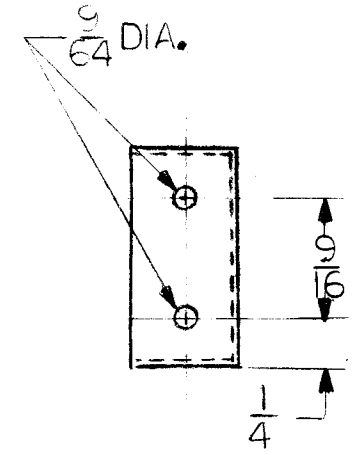
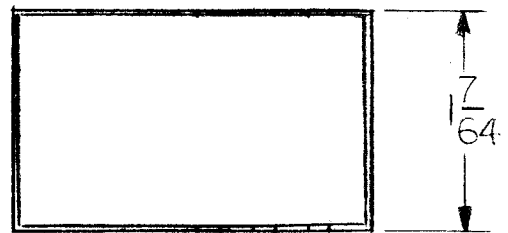
3

2

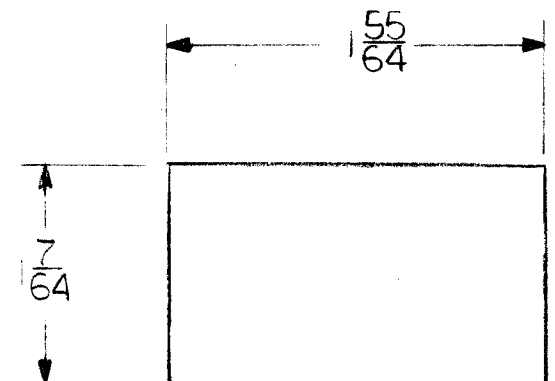
1

REVISIONS							
E.M.N. NO.	DRAFT	CHKD	ZONE	LTR	DESCRIPTION	DATE	APPROVED

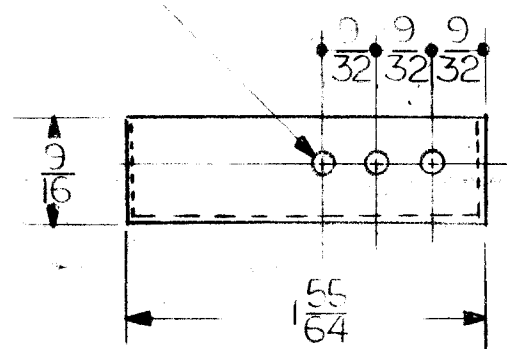
CASE



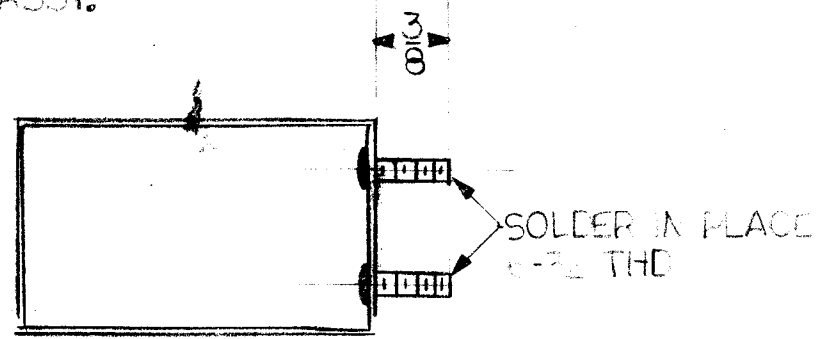
COVER



.161 TYP. DIA. (6 REG.)  
MTG. TE 169H  
BOTH SIDES



STUD ASSY.



CASE & COVER  
.025 THICK STEEL  
HOT TIN PLATE

REQ'D	ITEM	PART NUMBER	DESCRIPTION	SYM.

LIST OF MATERIAL

QTY / UNIT	MODEL USED ON	ASS'Y NO.
<b>APPLICATION</b>		

**NOTICE TO PERSONS RECEIVING THIS DRAWING**  
THE TECHNICAL MATERIEL CORPORATION claims proprietary right in the material disclosed hereon. This drawing is issued in confidence for engineering information only and may not be reproduced or used to manufacture anything shown hereon without permission from THE TECHNICAL MATERIEL CORPORATION to the user. This drawing is loaned for mutual assistance and is subject to recall at any time.

UNLESS OTHERWISE SPECIFIED  
DIMENSIONS ARE IN INCHES  
AND INCLUDE CHEMICALLY APPLIED  
OR PLATED FINISHES

DECIMALS	FRACTIONS	TOLS.
.X ± .05	1/64	
.XX ± .01	ANGLES	0° - 30'
.XXX ± .005		

MATERIAL	FINISH

FINAL APPROVAL	DATE
MECH. DES.	DATE
ELECT. DES.	DATE
CHECKED	DATE
DRAWN	DATE

**THE TECHNICAL MATERIEL CORP.**  
MAMARONECK, NEW YORK

CASE & COVER  
TF 455 PULSE XFMR.

SIZE	CODE IDENT. NO.	DWG NO.	ISSUE
B	82679	BX-237	
SCALE 1:1		SHEET OF	

5

4

3

2

1