

5

4

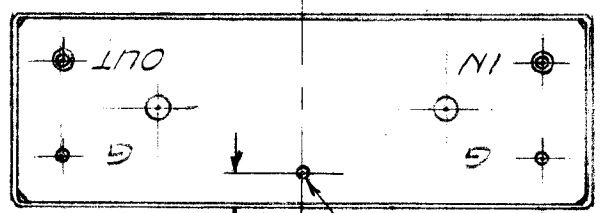
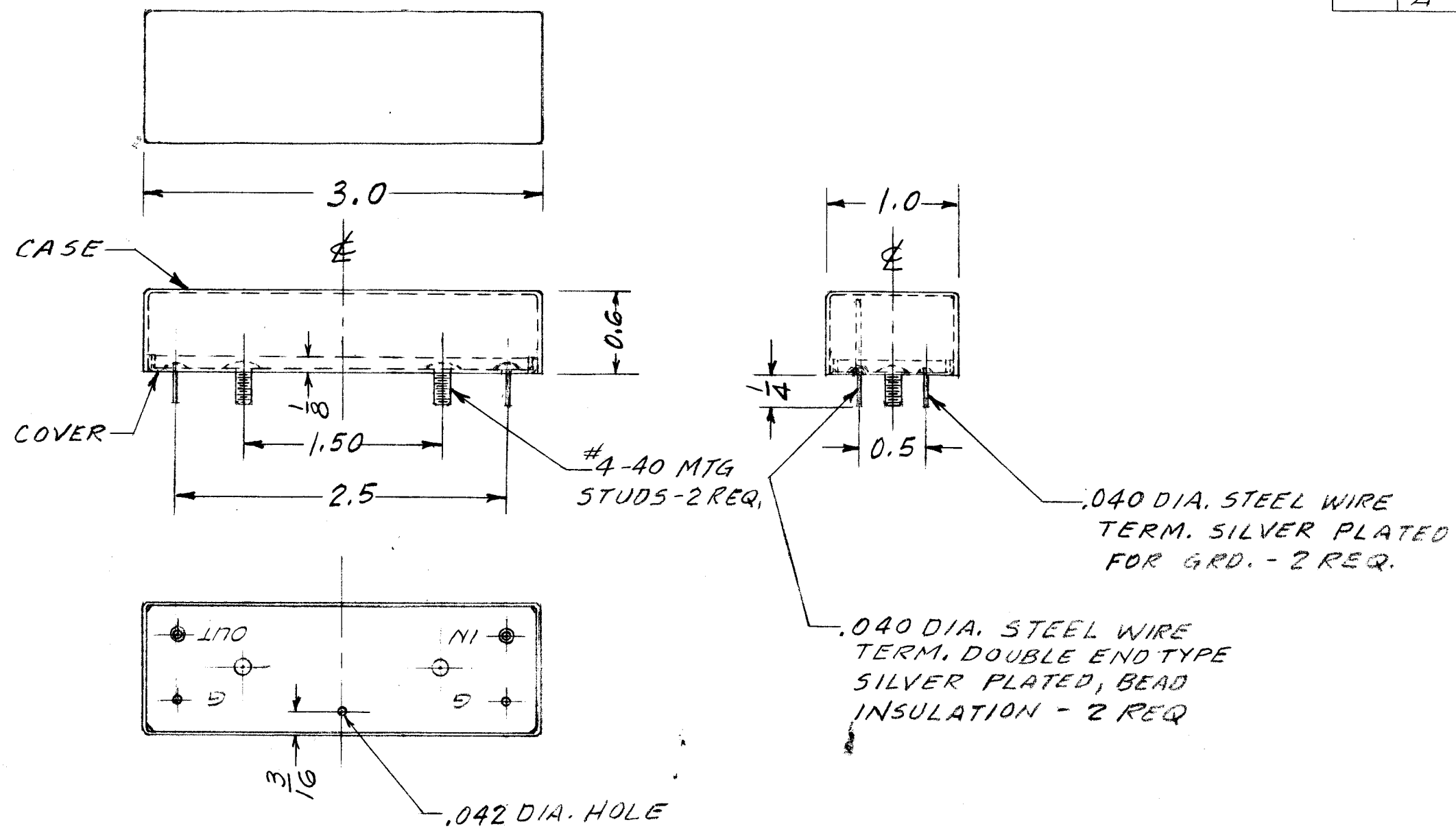
3

2

1

REVISIONS

ZONE	LTR	DESCRIPTION	DATE	E.M.N.NO	DRAFT	CHKD	APPD
	X	EXPERIMENTAL RELEASE	9/2/69	X	DAC	JDA	
	Ø	ORIGINAL RELEASE	9/3/69		W		
	A	REPOSITION LETTERING	9.8.70	19968	GE	W	W/CP



QTY / UNIT	MMX-()	ASS'Y NO.
APPLICATION		
	CODE	

NOTICE TO PERSONS RECEIVING THIS DRAWING
 THE TECHNICAL MATERIEL CORPORATION claims proprietary right in the material disclosed hereon. This drawing is issued in confidence for engineering information only and may not be reproduced or used to manufacture anything shown hereon without permission from THE TECHNICAL MATERIEL CORPORATION to the user. This drawing is loaned for mutual assistance and is subject to recall at any time.

UNLESS OTHERWISE SPECIFIED DIMENSIONS ARE IN INCHES AND INCLUDE CHEMICALLY APPLIED OR PLATED FINISHES	
DECIMALS .X ± .05 .XX ± .01 .XXX ± .005	FRACTIONS 1/64 ANGLES 0° - 30'
MATERIAL .032 STEEL FINISH POWDER BLASTED BRIGHT NICKEL	

REQ'D	ITEM	PART NUMBER	DESCRIPTION	SYM.
			LIST OF MATERIAL SK3246 BX 101	
THE TECHNICAL MATERIEL CORP. MAMARONECK, NEW YORK				
CASE & COVER				
SIZE	CODE IDENT. NO.	DWG NO.	ISSUE	
B	82679	BX 231	A	
SCALE	SHEET		OF	

5

4

3

2

1