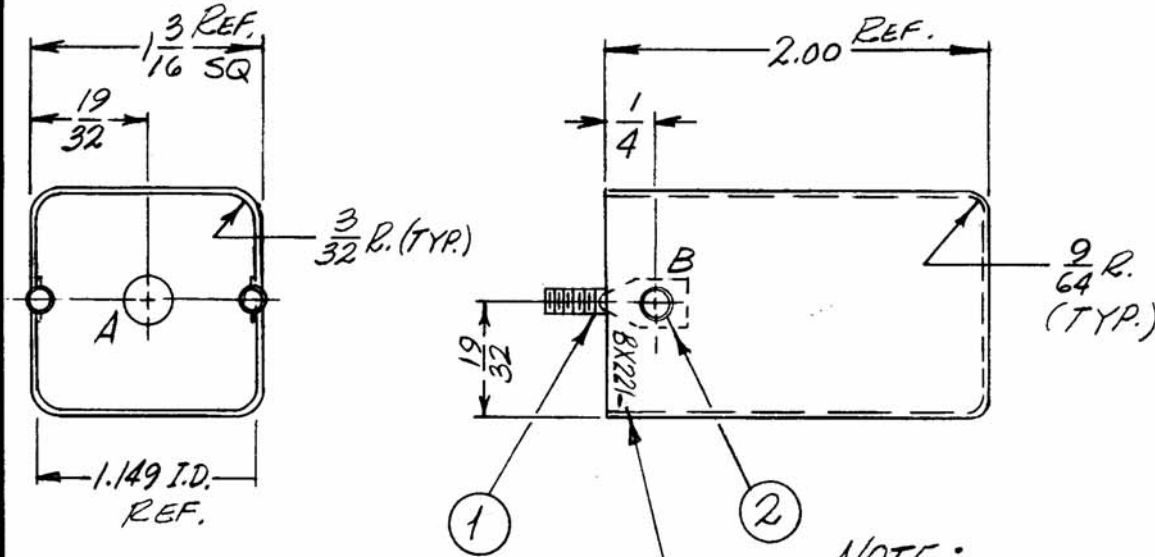


APPLICATION			REVISIONS						
QTY	MODEL USED ON	ASS'Y NO.	LTR	DESCRIPTION	DATE	E.M.N.NO	DRAFT	CHKD	APPD
12	VLEC-1	A4644	X	EXP. RELEASE	10-2-67	-	HLR	MPS	APD
			Ø	ORIG. RELEASE FOR PROD.	10-12-67	Ø	R.G.	APD	

HOLE	DESCRIPTION	REQ.
A	1/4 DIA.	1
B	.141 DIA.	2



MARK TMC PT. NO. 1/8 HIGH
GOTHIC W/LATEST REV. LETTER.

NOTE:
ASSEMBLE ITEM (1) TO
INSIDE WALLS OF CASE
WITH ITEM (2). (TYP. 2 PLACES)

MFG. CODE: S401-28 (HU4380 BR 2.00) BLANK CAN

MATERIAL - .019 THK. SOFT BRASS PER QQ-B-613-COMP. 4

REF:	QTY	QTY	PART NUMBER	DESCRIPTION	SYM.
M55204 (COVER)	2	2	EY100-1	EYELET, METAL	
	2	1	SC106-1	BOLT, EYE-SPADE	

UNLESS OTHERWISE SPECIFIED DIMENSIONS ARE IN INCHES AND INCLUDE CHEMICALLY APPLIED OR PLATED FINISHES		DECIMALS		FRACTIONS	
		X ± .05	1/64	TOLS.	ANGLES
		.XX ± .01	1/64		0° - 30°
		.XXX ± .005			
MATERIAL		SEE NOTE			
FINISH		BRASS PLATED			
S401-451					

REQ'D	ITEM	PART NUMBER	DESCRIPTION	SYM.

FINAL APPROVAL		DATE
MARTINENGO	[Signature]	10-10-67
MECH. DES.	[Signature]	DATE
ELECT. DES.	[Signature]	DATE
CHECKED	[Signature]	DATE 10-16-67
DRAWN	H. AUSTIN	DATE 10-2-67

LIST OF MATERIAL			
THE TECHNICAL MATERIEL CORP. MAMARONECK, NEW YORK			
CASE, TUNING COIL			

SIZE	CODE IDENT. NO.	DWG NO.	ISSUE
A	82679	BX221	Ø

SCALE	SHEET	OF
1:1		

NOTICE TO PERSONS RECEIVING THIS DRAWING: THE TECHNICAL MATERIEL CORPORATION claims proprietary right in the material disclosed hereon. This drawing is issued in confidence for engineering information only and may not be reproduced or used to manufacture anything shown hereon without permission from THE TECHNICAL MATERIEL CORPORATION to the user. This drawing is loaned for mutual assistance and is subject to recall at any time.