

5

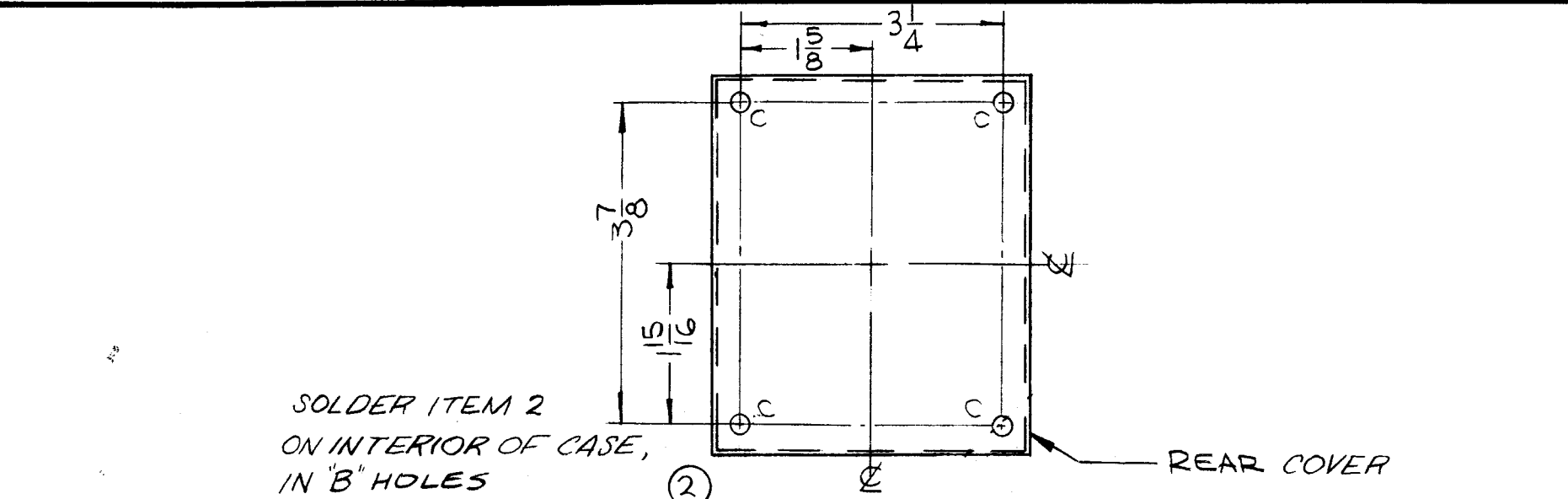
4

3

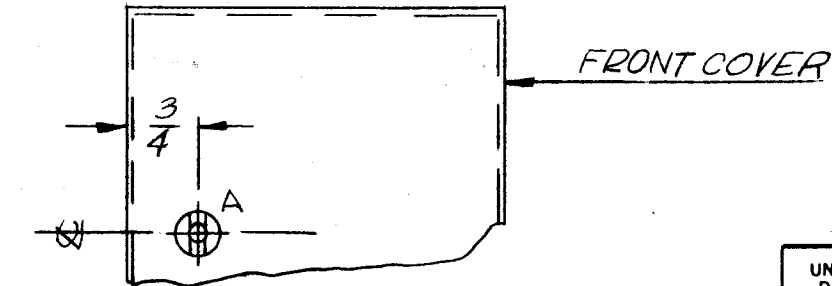
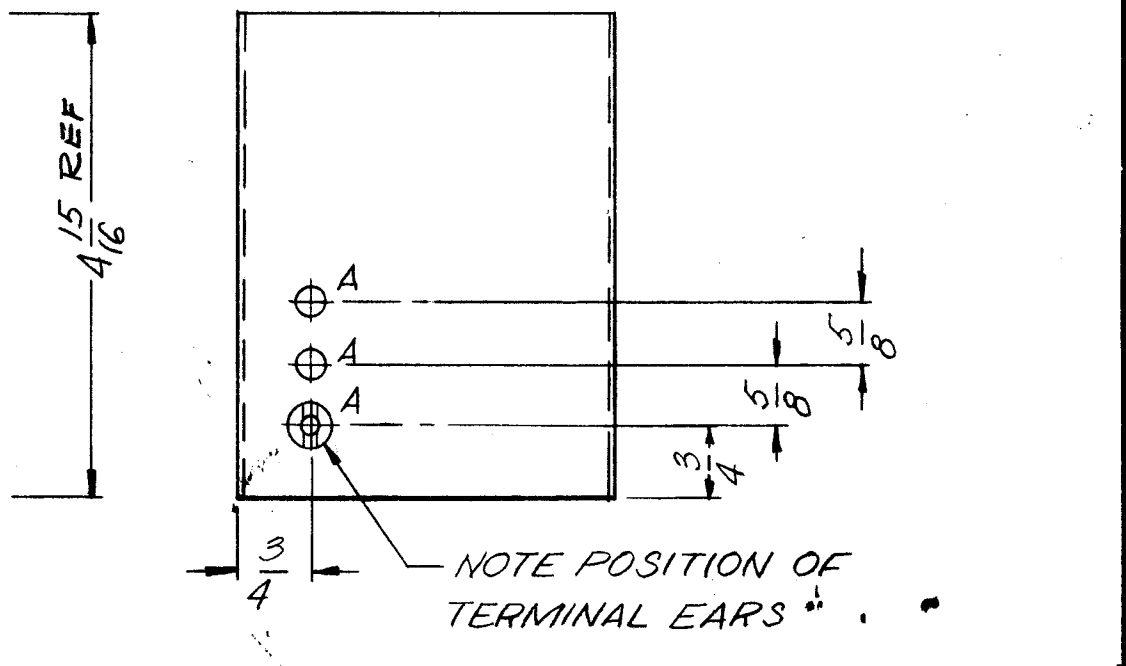
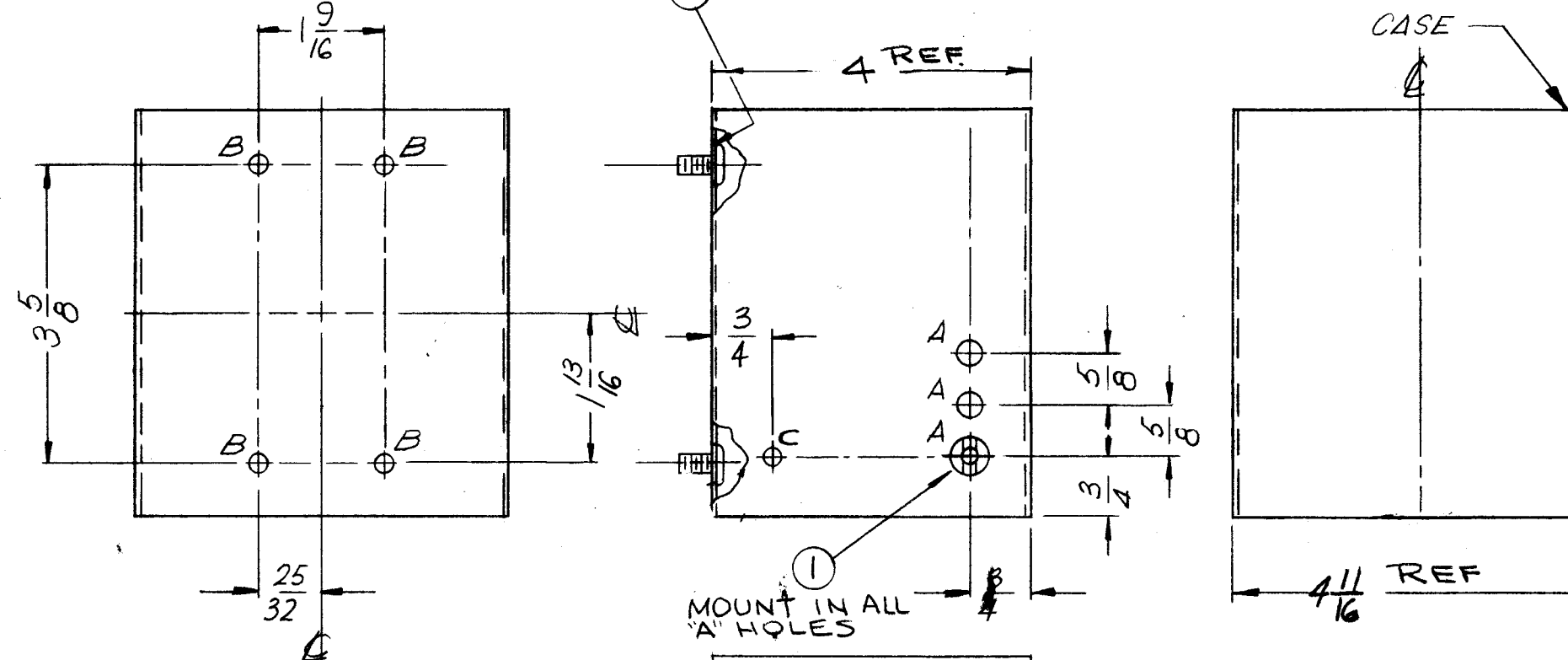
2

1

REVISIONS						
ZONE	LTR	DESCRIPTION	DATE	E.M.N.NO	DRAFT	CHKD APPD
	X	EXP RELEASE	2-22-67		LHW	
	X1	4C HOLES, 4 ITEM 2, 1 ITEM 3 ADDED	4-6-67		LHW	
	X2	4 1/16 WAS 4.625	4-10-67		LHW	
	Ø	ORIG. RELEASE FOR PROD.	4-13-67		LHW	



HOLE	DESCRIPTION	REQ
A	17/64 (.265) DIA	7
B	3/16 (.187) DIA	4
C	13/64 (.203) DIA	5



REQ'D	ITEM	PART NUMBER	DESCRIPTION	SYM.
4	2	SCBPO832BN6	SCREW, MACHINE	B
7	1	TE101-4	TERMINAL, FEED-THRU, INS	A

L. BUTLER		LIST OF MATERIAL	
THE TECHNICAL MATERIEL CORP. MAMARONECK, NEW YORK			
CASE AND COVERS			
SIZE	CODE IDENT. NO.	DWG NO.	ISSUE
B	82679	BX220	Ø
SCALE 1:2		SHEET 1 OF 1	

1	TR-162A	A1218-2
QTY / UNIT	MODEL USED ON	ASS'Y NO.
APPLICATION		
CODE		
NOTICE TO PERSONS RECEIVING THIS DRAWING THE TECHNICAL MATERIEL CORPORATION claims proprietary right in the material disclosed hereon. This drawing is issued in confidence for engineering information only and may not be reproduced or used to manufacture anything shown hereon without permission from THE TECHNICAL MATERIEL CORPORATION to the user. This drawing is loaned for mutual assistance and is subject to recall at any time.		

UNLESS OTHERWISE SPECIFIED DIMENSIONS ARE IN INCHES AND INCLUDE CHEMICALLY APPLIED OR PLATED FINISHES	
DECIMALS .X ± .05 .XX ± .01 .XXX ± .005	FRACTIONS 1/64 ANGLES 0° .30'
MATERIAL .032/.037 STEEL	FINISH NONE

FINAL MECH. DES.	DATE
ELECT. DES.	DATE
CHECKED	DATE
DRAWN	DATE

NOTES:  
1- CAN AND COVERS SIMILAR TO BX100-20 EXCEPT AS NOTED SEE DETAIL OF COVER.