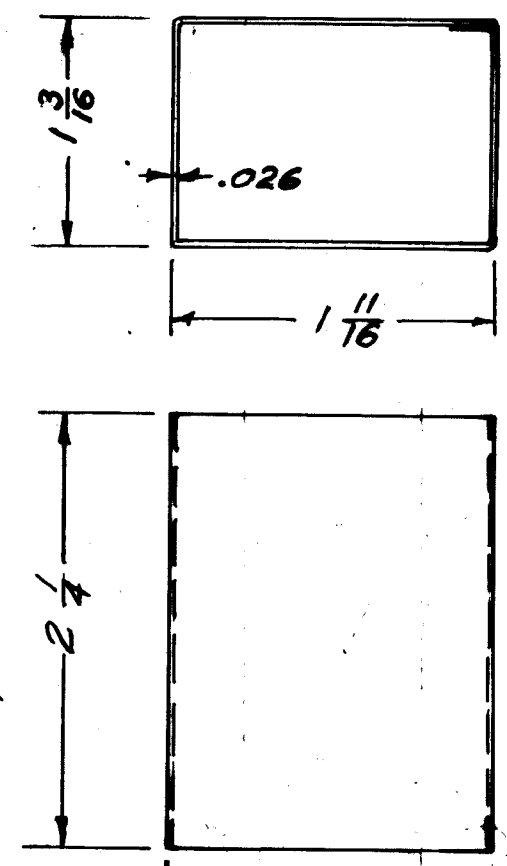
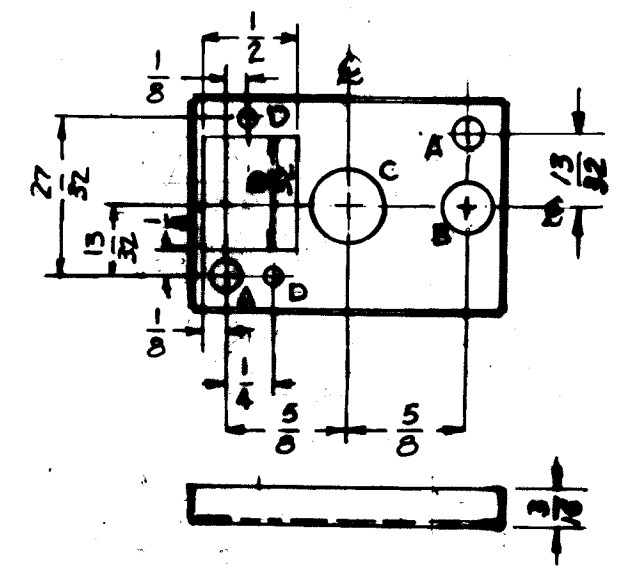


BX 217 A

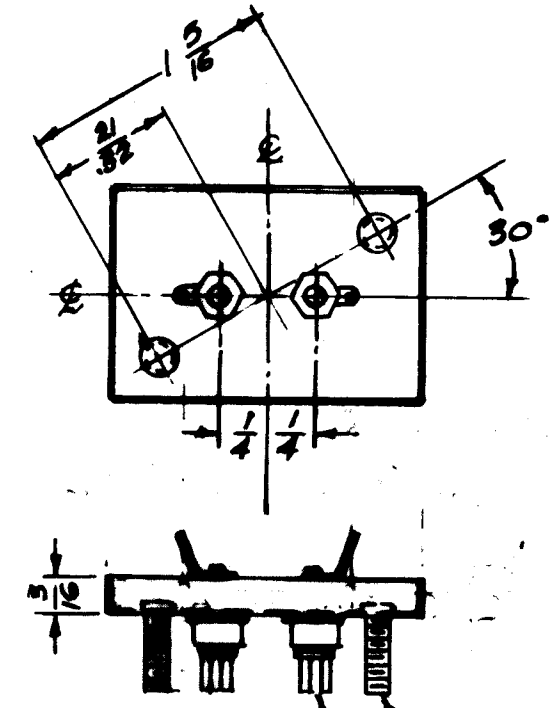
CAN



TOP

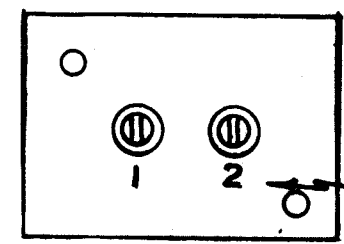


BOTTOM



Single End Stud - 6-32 x 3/8 - Class 2 2 Req.

TERMINAL No. - TMC-TE-101-1 2 Req.
HELDOR - 250-D



HOLES

- A - 5/32 (.156) D 2 Req.
- B - 9/32 (.281) D. 1 Req.
- C - 3/8 (.375) D. 1 Req.
- D - 7/64 DIA. 2 Req.

Blank Can # - 136-YY

Ref - Helder Bushing & Term. Co.

ISSUE	ITEM	CHANGED FROM	DATE	CH. NO.	DRAFTS	CHECKER	ENG. APP.
A		B HOLE WAS 3/16 DIA	3-8-67	17941			
		ORIGINAL RELEASE	4-15-64			GDL	

TOLERANCES SCALE: FL1LL

DEC. DIM. ±
FRAC. DIM. ±
ANGULAR DIM. ±

MAXIMUM ALLOWABLE TOLERANCES HAVE BEEN DETERMINED AND ANY DEVIATIONS WILL BE CAUSE FOR REJECTION.
REMOVE ALL BURRS AND SHARP EDGES

1	SBE-2A	A 4230	4-14-65
REQ. PER UNIT	MODEL	PROJECT NO.	DATE

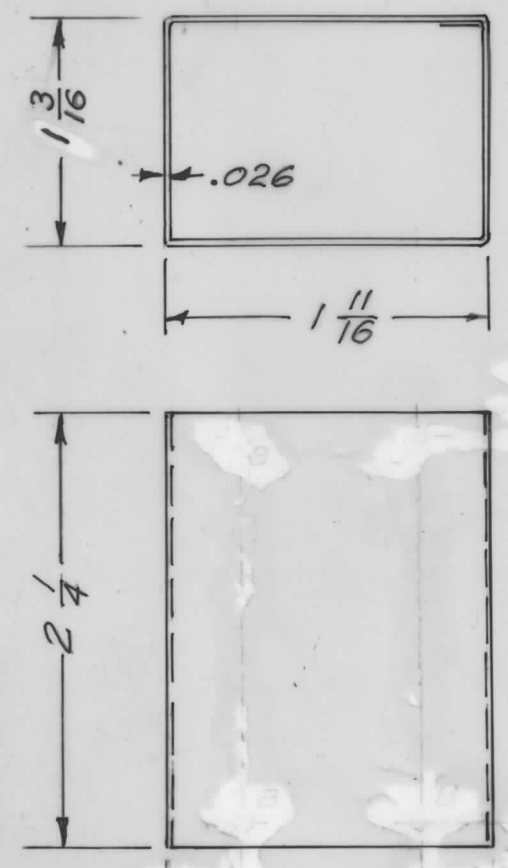
REQ. ITEM	PART NO.	DESCRIPTION	SYMBOL
	.025 THK	STEEL SIZE	
	Steel	MATERIAL	
		THE TECHNICAL MATERIEL CORP. MAMARONECK, NEW YORK	
		CASE & COVERS	
		Hot Tinned	

TYPE & TEMPER HEAT TREAT. SPEC. DRAWN G.D.L. 4-14-65

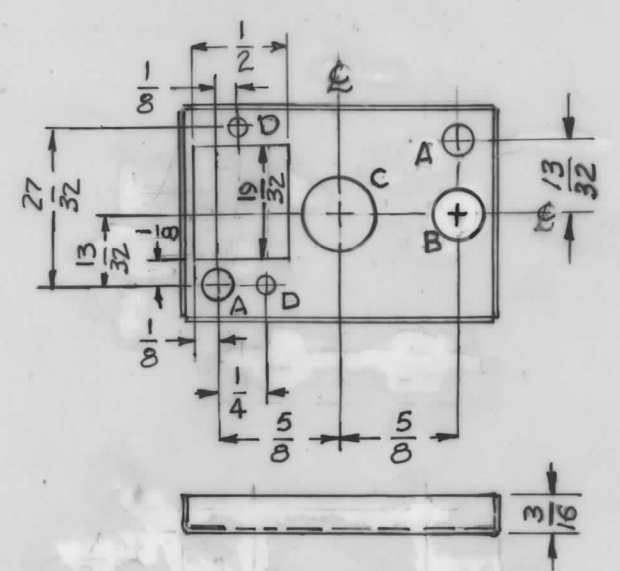
FINAL APPROVAL [Signature] BX 717 A

BX 217 A

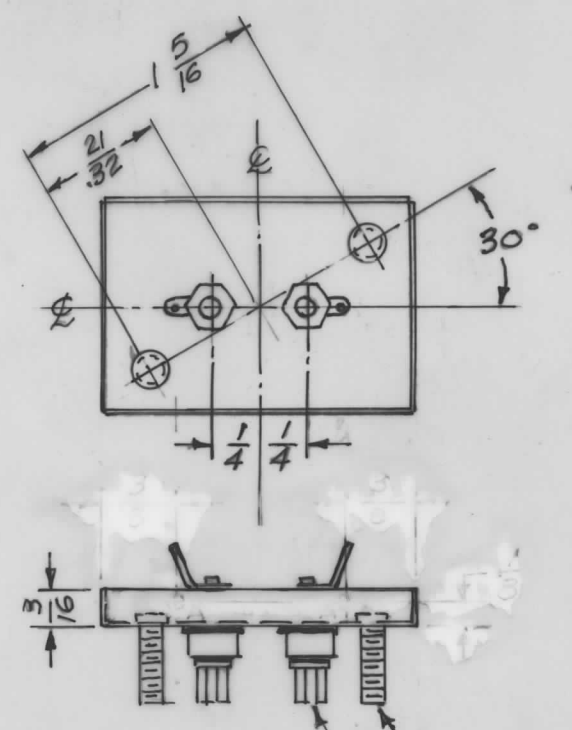
CAN



TOP

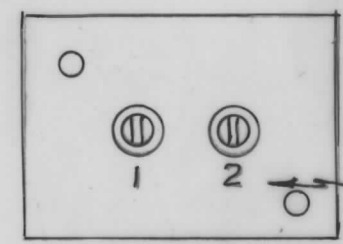


BOTTOM



Single End Stud - 6-32 x 3/8 - Class 2 2 Req.

TERMINAL No. - TMC-TE-101-1 2 Req.
 HELDOR-250-D



$\frac{1}{8}$ high Metal Stamp

HOLES

- A - 5/32 (.156) D 2 Req.
- B - 9/32 (.281) D. 1 Req.
- C - 3/8 (.375) D. 1 Req.
- D - 7/64 DIA. 2 Req.

Ref- Heldor Bushing & Term. Co. Blank Can # 136-YY

ISSUE ITEM	CHANGED FROM	DATE	CH. NO.	DRAFTS	CHECKER	ENG. APP.
A	B HOLE WAS 3/16 DIA	3-8-67	17941		GDL	
Ø	ORIGINAL RELEASE	4-15-65			GDL	
TOLERANCES		SCALE: FULL				
DEC. DIM. ±	MAXIMUM ALLOWABLE TOLERANCES HAVE BEEN DETERMINED AND ANY DEVIATIONS WILL BE CAUSE FOR REJECTION.					
FRAC. DIM. ±	REMOVE ALL BURRS AND SHARP EDGES					
ANGULAR DIM. ±						

1	SBE-2A	A 4230	4-14-65
REQ. PER UNIT	MODEL	PROJECT NO.	DATE
		ASS'Y. NO.	USED ON

REQ. ITEM	PART NO.	DESCRIPTION	SYMBOL
	.025 Thk	THE TECHNICAL MATERIEL CORP.	
	STEEL	MAMARONECK, NEW YORK	
	Steel	CASE & COVERS	