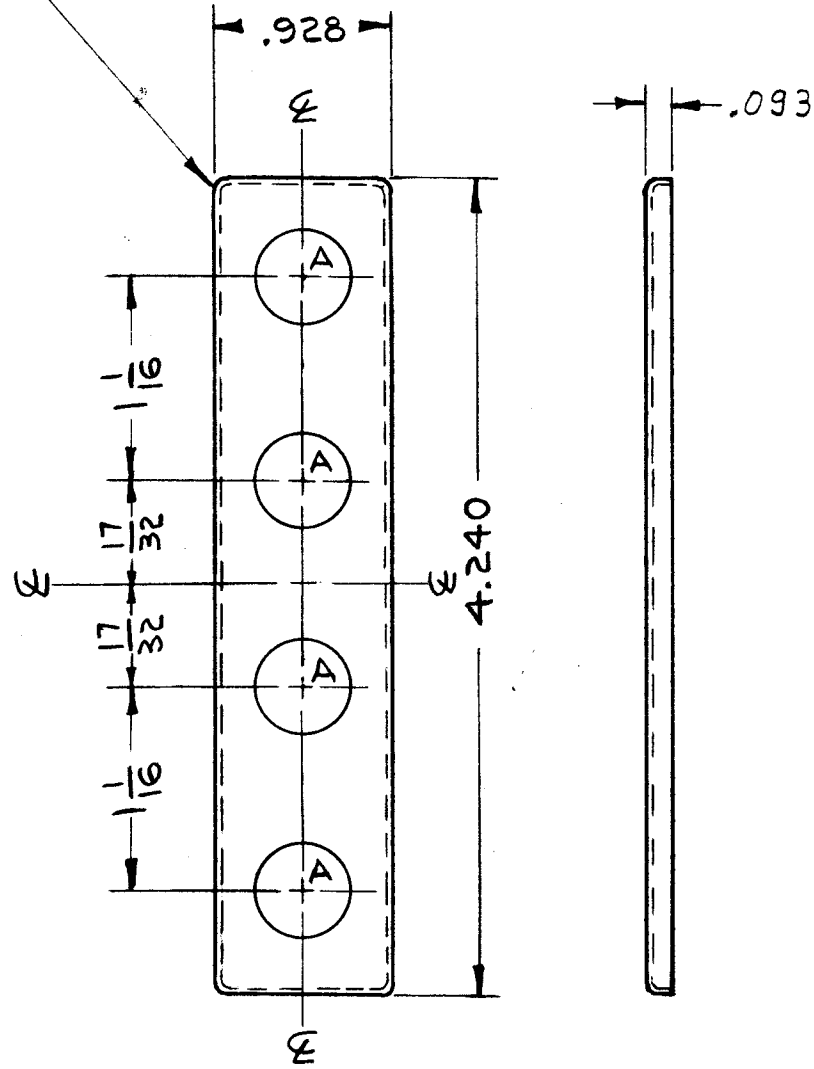


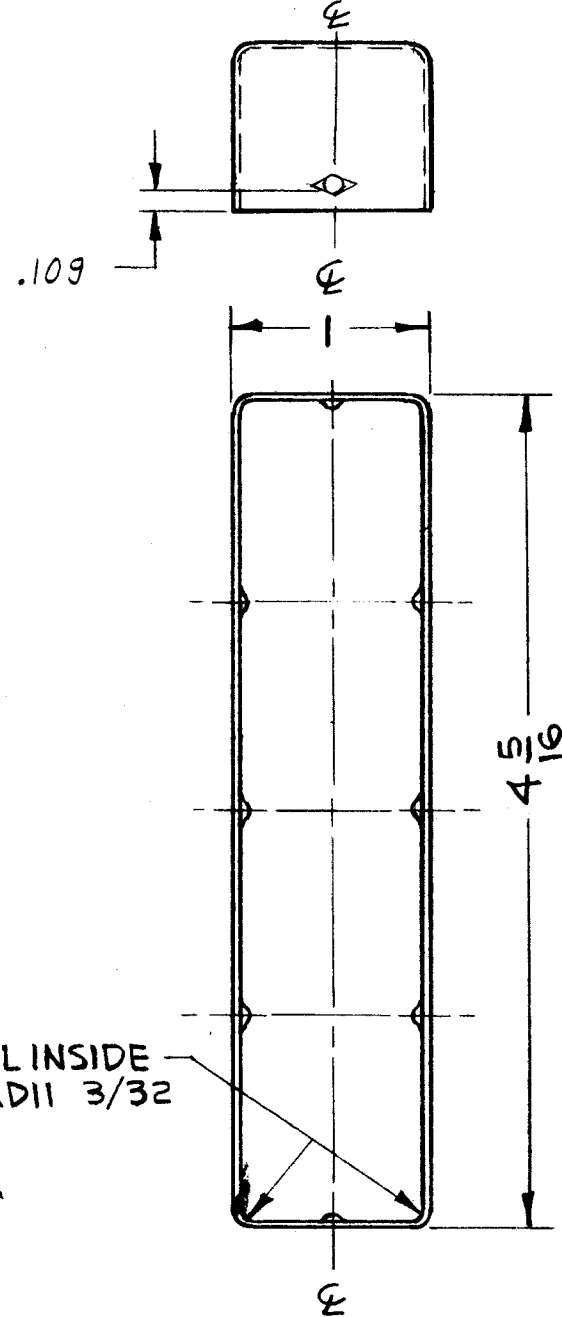
A = .500 DIA HOLE, 4 REQ'D

ALL OUTSIDE CORNER RADII 3/32



COVER
MUST FIT
INSIDE OF CAN

DIMPLE & LOCATION IDENTICAL BOTH ENDS

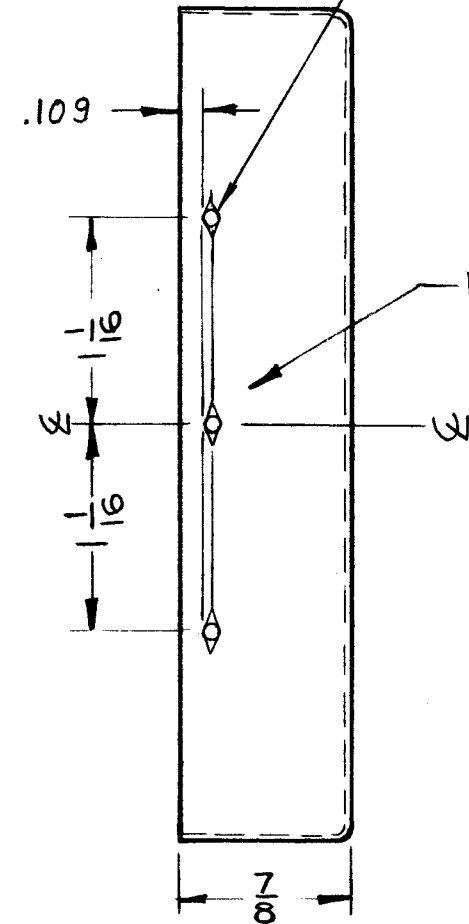


ALL INSIDE RADII 3/32

CAN

.063 DIA X .032 MAX DEEP INTERNAL DIMPLE, 8 PLACES AS SHOWN. (DIAMOND DIMPLE) OPTIONAL

DIMPLES & LOCATION IDENTICAL BOTH SIDES



REVISIONS

SYM	DESCRIPTION	DATE	E.M.N. NO.	DRAFT	CHKD	APPD
A	ADD. "BRIGHT DIP" FINISH; .500 DIA. WAS 3/164	4-11-66	16087	HCA	JCB	MM
B	ADDED NOTE (DIAMOND DIMPLE) OPTIONAL, .093 WAS 1/8, .109 WAS .125, MATERIAL WAS .063	4-12-67	18105	L.A.K.	MM	MM

REQ'D.	ITEM	PART NUMBER	DESCRIPTION	SYMBOL
A. MARTINENGO LIST OF MATERIAL				
MATERIAL		THE TECHNICAL MATERIEL CORP. MAMARONECK, NEW YORK		
FINISH		TITLE		
BRIGHT DIP		CAN & COVER		
UNLESS OTHERWISE SPECIFIED DIMENSIONS ARE IN INCHES AND INCLUDE CHEMICALLY APPLIED OR PLATED FINISHES		DRAWN	DATE	FINAL APPROVAL
		FILE	3-29-63	MM
		CHECKED	DATE	DATE
		FILE	4-1-63	4/1/63
		ELECT. DES.	DATE	
		MECH. DES.	DATE	
		MM	4-1-63	
DECIMALS .X ± .05 .XX ± .01 .XXX ± .005				SYMBOL
FRACTIONS ± 1/64 ANGLES ± 0° 30'				BX-205 B
TOLERANCES				REV. LTR.
				SHEET

NOTES

THE CONTENTS OF THIS DRAWING ARE THE EXCLUSIVE PROPERTY OF THE TECHNICAL MATERIEL CORP. ITS UNAUTHORIZED USE OR REPRODUCTION IN WHOLE OR IN PART IS STRICTLY FORBIDDEN.