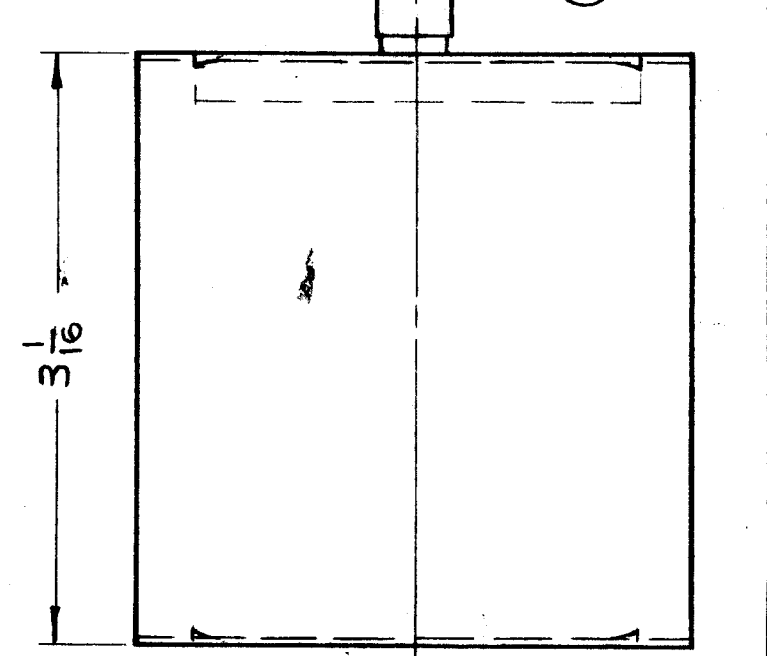
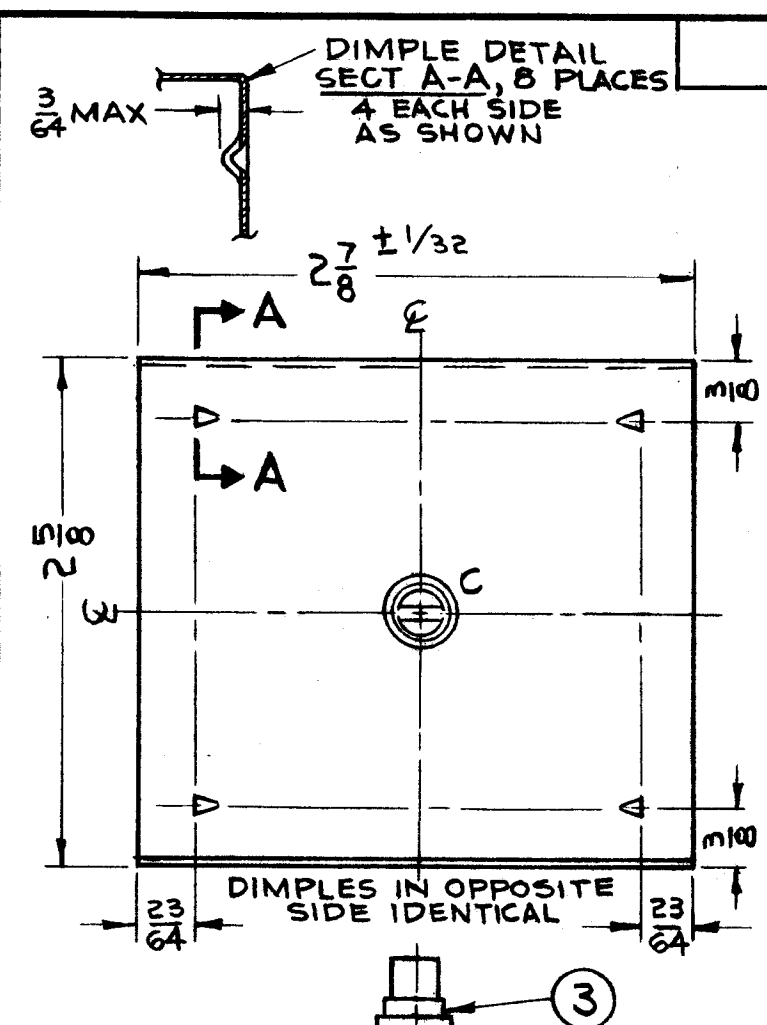
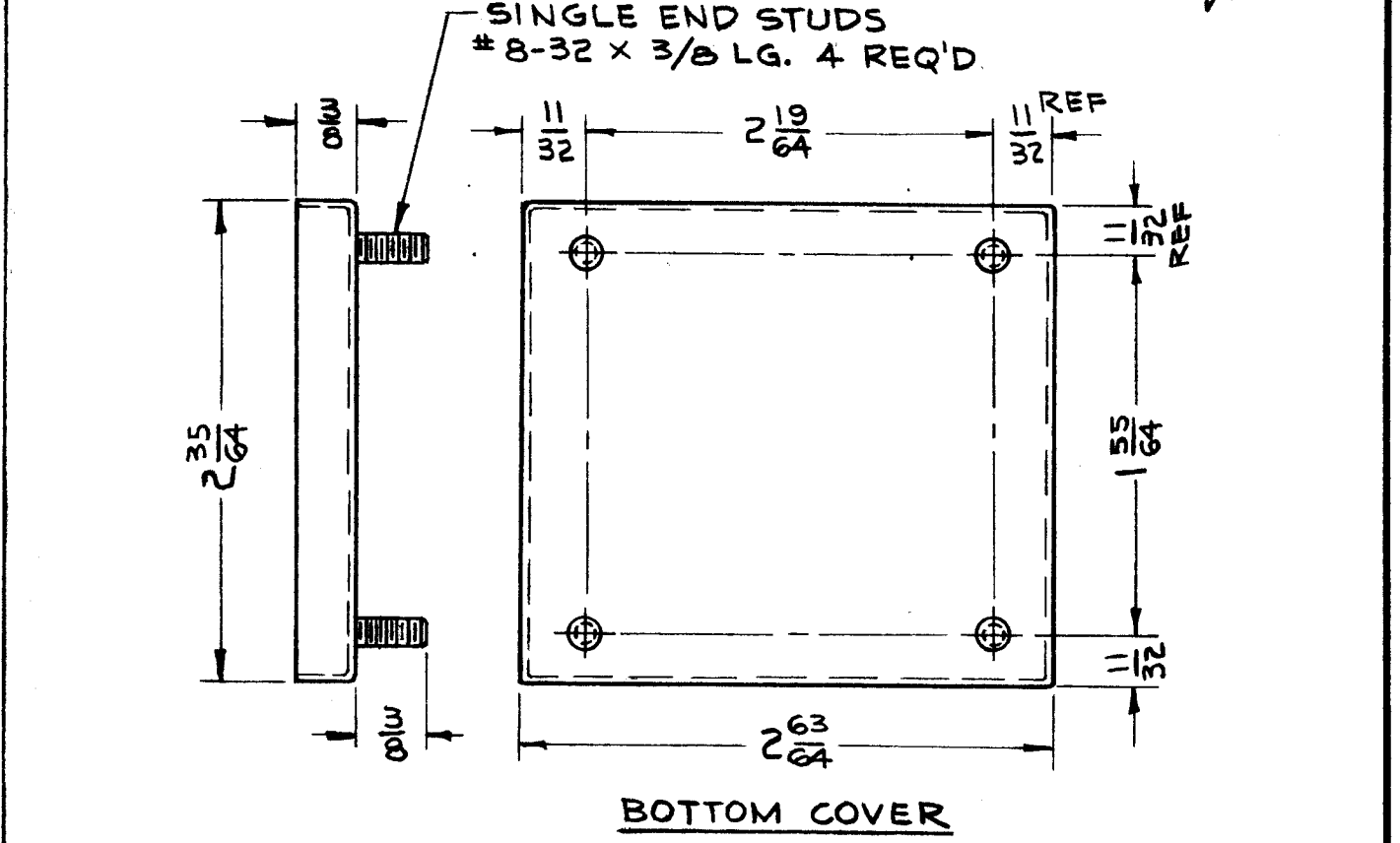


**CLIP MTG DETAIL**  
 SOLDER LUGS, NEOPRENE GLAND, TOP & BOTTOM STEATITE, LOCKWASHER & NUT ARE PART OF TE-101-2 ITEM #4. REPLACE STUD WITH ITEM #2 AS SHOWN.



REVISIONS					
SYM	DESCRIPTION	DATE	E.M.N. NO.	DRAFT	CHKD APPD
A	2 HOLES 7/32 DIA. ADDED TO TOP COVER.	11-19-64	12960	9R	
B	IT. 1 WAS FC-102-X-C.	3-27-65	15418	7V	



HOLE	DESCRIPTION	REQ'D
A	9/64 DIA	1
B	7/32 DIA	4
C	17/64 DIA	1

REQ'D.	ITEM	PART NUMBER	DESCRIPTION	SYMBOL
X	5	BS-100	SOLDER, SOFT	
4	4	TE-101-2	BUSHING, SLOTTED	
1	3	TE-101-3	BUSHING, SLOTTED	
4	2	SCBP0440BN16	SCREW, MACHINE	
4	1	FC-102-1XN	FUSE CLIP, EARS.	

MATERIAL		LIST OF MATERIAL	
.032/.037 STEEL		THE TECHNICAL MATERIEL CORP. MAMARONECK, NEW YORK	
FINISH HOT TINNED		TITLE CASE & COVERS ASSEMBLY	
UNLESS OTHERWISE SPECIFIED DIMENSIONS ARE IN INCHES AND INCLUDE CHEMICALLY APPLIED OR PLATED FINISHES		DRAWN: <i>JMS</i> CHECKED: <i>JLO</i> ELECT. DES. MECH. DES.	DATE: 2-26-63 DATE: 3-6-63 DATE: 3/12/63
DECIMALS .X ± .05 .XX ± .01 .XXX ± .005		FINAL APPROVAL: <i>BP</i> DATE: SHEET: BX-202	
FRACTIONS ± 1/64 ANGLES ± 0° 30'		REV. LTR. B	

Q'TY./UNIT	MODEL USED ON	ASS'Y. NO.
1	TR-177	A-3110
SCALE	CODE	

**NOTES**  
 THE CONTENTS OF THIS DRAWING ARE THE EXCLUSIVE PROPERTY OF THE TECHNICAL MATERIEL CORP. ITS UNAUTHORIZED USE OR REPRODUCTION IN WHOLE OR IN PART IS STRICTLY FORBIDDEN.