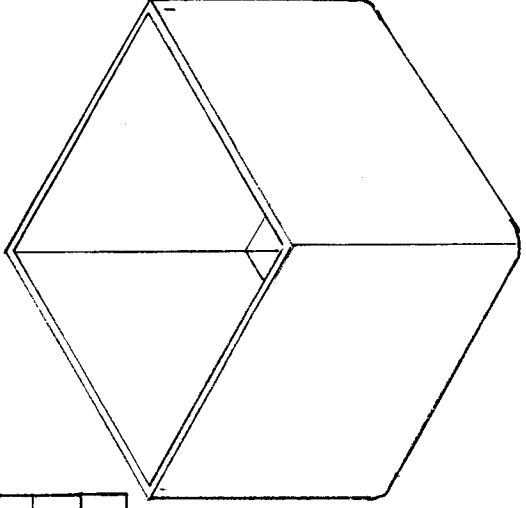


STANDARD DRAWING

USED ON	DATE	BX-102 H
ASSY. NO.		
MODEL		
REQ. PER UNIT		

IS - INSIDE
OS - OUTSIDE

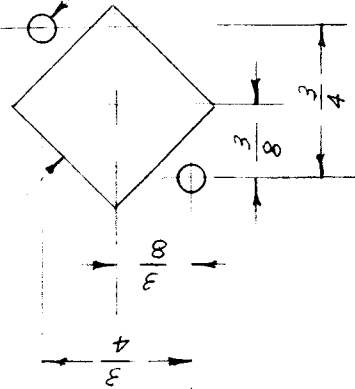


TMC NO.	CAT. NO.	SIZE-WIDTH & LENGTH	HEIGHT	MAT. GAUGE
BX-102-1	01821	1 7/8 x 1 7/8 OS	4 IS	.0201
-2	03090	1 1/8 x 1 1/8 IS	3 IS	.0159
-3				
-4	03254	1 1/4 x 1 1/4 IS	3 IS	.0159
-5	03279	1 1/4 x 1 1/4 IS	3 1/4 IS	.0159
-6		1 1/4 x 1 1/4 IS	1 1/2 IS	.0159
-7	03444	1 3/8 x 1 3/8 IS	2 3/4 IS	.0201
-8	01816	1 3/8 x 1 3/8 IS	2 IS	.0201
-9	03313	1 1/4 x 1 1/4 IS	2 1/4 IS	.0159
-10		1 3/8 x 1 3/8 IS	2 1/4 IS	.0201

REF. ALUMINUM GOODS MFG. CO.

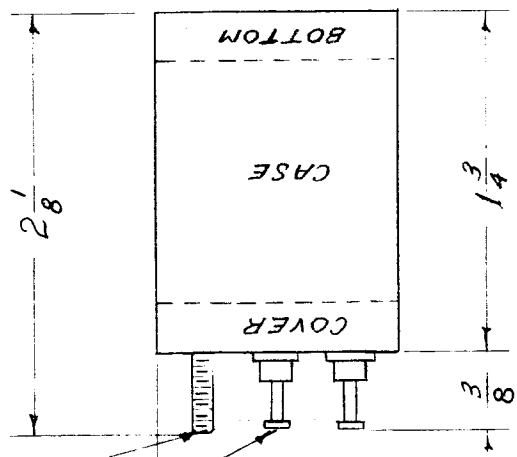
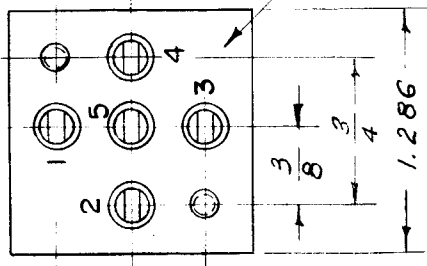
REQ. ITEM	REQ. ITEM	PART NO.	DESCRIPTION	SYMBOL		
H 1	BX-102-10 ADDED	8-20-63 9818 AK				
Z	BX-102-9 ADDED					
G 1	BX-102-5, 03313 DELETED HT. WAS 2 1/4	11-22-61 5945 GG	THE TECHNICAL MATERIEL CORP. MAMARONECK. NEW YORK			
F 1	BX-102-8 ADDED	10/10/66 6	CAN			
F 1	DIM. REVISED	9/21/66 5				
ISSUE ITEM	CHANGED FROM	DATE	CH. NO.	DRAFTS	CHECKER	ENG. APP.
		9/21/66	5	CSO	JINDE	WJC
TOLERANCES						
SCALE:						
MAXIMUM ALLOWABLE TOLERANCES HAVE BEEN DETERMINED AND ANY DEVIATIONS WILL BE CAUSE FOR REJECTION. REMOVE ALL BURRS AND SHARP EDGES						
DEC. DIM. ±						
FRAC. DIM. ±						
ANGULAR DIM. ±						
	TYPE & TEMPER	HEAT TREAT. SPEC.	DRAWN	CHECKED	FINAL APPROVAL	
			CSO 9/21/66	JINDE	WJC	
	FINISH & SPEC. NO.	ELEC. DES. APP. MECH. DES. APP.				
		WJC BX-102 H				

MOUNTING DETAIL
 $\frac{3}{4}$ SQUARE



TE-126 5 REQ.

6-32 STUDS 2 REQ'D. SINGLE END



DIMENSIONS FOR REF. ONLY

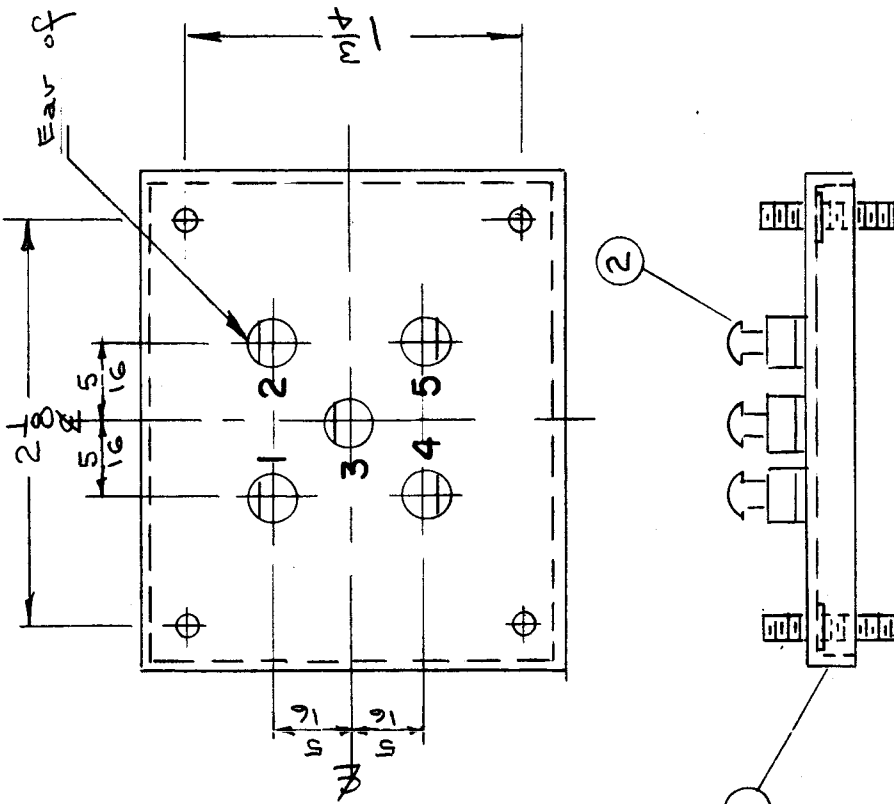
METAL STAMP AS SHOWN 1 TO 5

REF: HELDOR MFG. CO. CAT. NO. 102-AK MOD.

REQ. PER UNIT		MODEL		USED ON ASSY. NO.		DATE		BX-104 C	
REQ. ITEM	PART NO.	DESCRIPTION	SYMBOL						
	.019-.025	THE TECHNICAL MATERIEL CORP.							
	STEEL	MAMARONECK. NEW YORK							
	STEEL	CASE, TRANSFORMER							
	11	11							
	TYPE & TEMPER	HEAT TREAT. SPEC.							
	HOT TINNED								
	FINISH & SPEC. NO.								
ISSUE ITEM	CHANGED FROM	DATE	CH. NO.	DRAFTS	CHECKER	ENG. APP.			
C 1	FINISH W/NS ELECTRO TIN	8-3-55	3		JAD	WJZ			
X	REDRAWN	5-12-55	11		P.B.	WJZ			
TOLERANCES									
DEC. DIM. ±									
FRAC. DIM. ± 1/64									
ANGULAR DIM. ±									
							APR. 5-12-55	JAD	FINAL APPROVAL
								WJZ	BX-104 C

IF IT IS FOUND DESIRABLE TO CHANGE ANY TOLERANCE OR OTHER DETAIL SPECIFIED ON THIS DRAWING NOTIFY THE PURCHASER PROMPTLY.

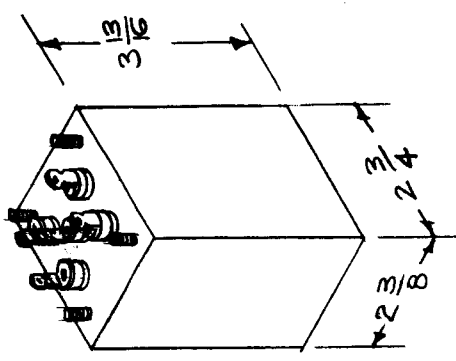
MAXIMUM ALLOWABLE TOLERANCES HAVE BEEN DETERMINED AND DEVIATIONS WILL BE CAUSE FOR REJECTION. REMOVE ALL BURRS AND SHARP EDGES



Ear of Lugs Here

NOTE:
Metal Stamp Lettering
AS SHOWN. 1-2-3-4-5,

REF: HELDOR MFG. CO.
CAN #104-GA
TERMINALS - #250E



BX-111 C

REQ. PER UNIT		USED ON		
MODEL	PROJECT NO.	ASSY. NO.	DATE	
FD-116	170	A-750	7-17-53	
FD-117	170	A-751	7-17-53	
FX-154		A-1424	6-20-57	
FX-155		A-1427	6-20-57	

REQ. ITEM	PART NO.	DESCRIPTION	SYMBOL
5 2	TE-134	LUG, TERMINAL	
1 1	BX-100-9D	CASE	

STEEL		THE TECHNICAL MATERIEL CORP.	
MATERIAL		MAMARONECK, NEW YORK	
TYPE & TEMPER		CASE & COVERS	
HEAT TREAT. SPEC.		DRAWN: <i>VAID</i>	
FINISH & SPEC. NO.		ELEC. DES. APP.:	
HOT TINNED		MECH. DES. APP.:	
SUPER SIZES		CHECKED: <i>WJL</i>	
EM 1-228		FINAL APPROVAL:	
BX-111		C	

ISSUE ITEM	CHANGED FROM	DATE	CN. NO.	DRAFTS CHECKER	ENG. APP.
C 1	O/A. DIM. CHG'D FROM 2.300 x 2.670 to conform with New MIL-T-27A	1/3/58	3	WJL	
B 1	CAN DETAIL ADDED - TITLE WAS DISCREP. CAN.	9/20/57	2	WJL	
A 1	FINISH WAS ELECTROTIN	8/3/55	1	WJL	

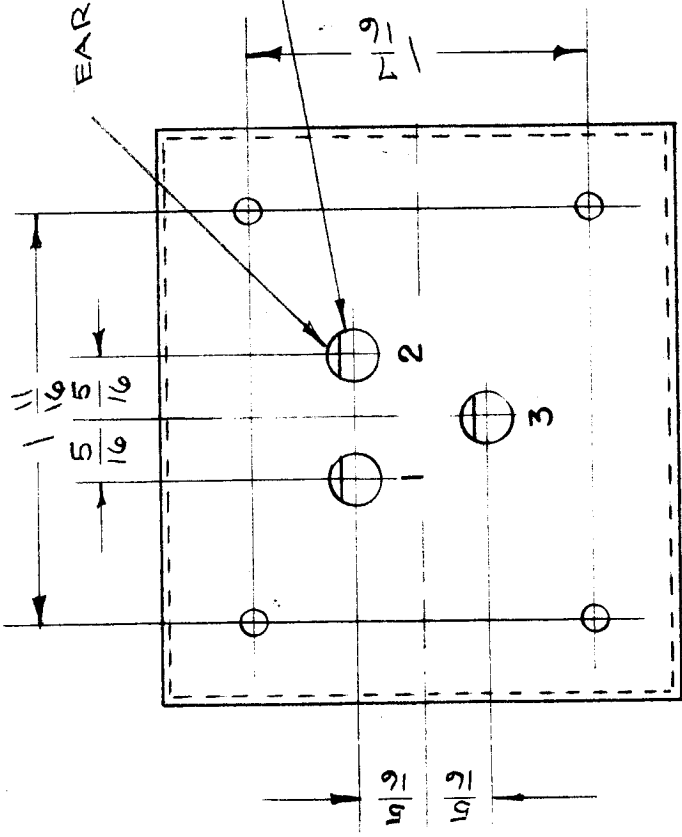
TOLERANCES
SCALE
DRILL, PUNCH, COMMERCIAL STOCK SIZES AND MANUFACTURERS TOLERANCES ARE NOT INCLUDED.

BX-112 A

USED ON	
MODEL	PROJECT NO.
FX-134	
ASSY. NO.	DATE

IF IT IS FOUND DESIRABLE TO CHANGE ANY TOLERANCE OR OTHER DETAIL SPECIFIED ON THIS DRAWING NOTIFY THE PURCHASER PROMPTLY.

MAXIMUM ALLOWABLE TOLERANCES HAVE BEEN DETERMINED AND DEVIATIONS WILL BE CAUSE FOR REJECTION. REMOVE ALL BURRS AND SHARP EDGES

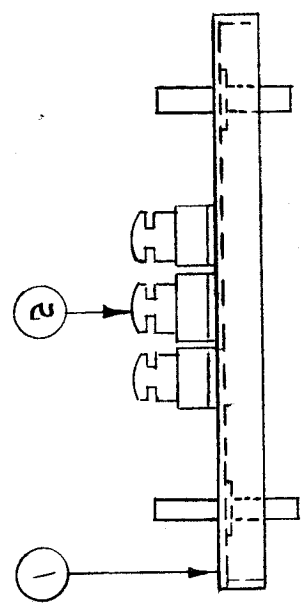


EAR OF LUGS HERE

+0.000
-0.005

.172 D. 3 HOLES REQ.

METAL STAMP 1/8 HIGH AS SHOWN
1-2 & 3.



3	2	TE-134	LUG, TERMINAL	SYMBOL
1	1	BX-100-8D	CASE, TRANSFORMER	
REQ. ITEM	PART NO.	DESCRIPTION	SYMBOL	
		THE TECHNICAL MATERIEL CORP. MAMARONECK, NEW YORK		
		TERMINAL ASSEMBLY		
		DRILLING PLAN		
MATERIAL	WEIGHT PER PC.			
TYPE & TEMPER				
HEAT TREAT. SPEC.				
FINISH & SPEC. NO.				

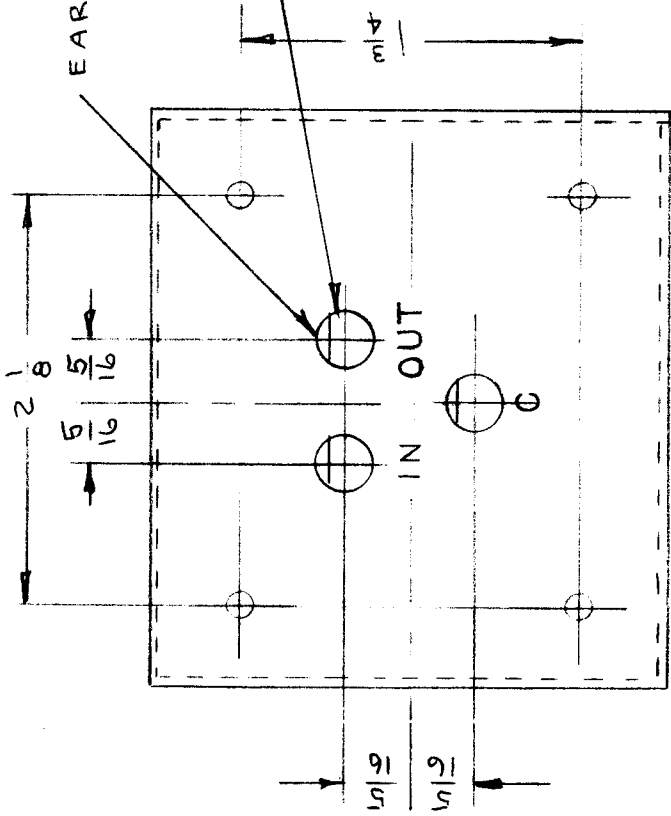
A	1	STUDS CHANGED TO AGREE WITH BX-100	7-18-63	9606	998
ISSUE ITEM	CHANGED FROM	DATE	CN. NO.	DRAFTS CHECKER	ENG. APP.
TOLERANCES					
DEC. DIM. ±	DRILL, PUNCH, COMMERCIAL STOCK				
ALL OTHERS	SIZES AND MANUFACTURERS				
	TOLERANCES ARE NOT INCLUDED.				

CHECKED
SuperCades
A-472

FINAL APPROVAL
BX-112 A

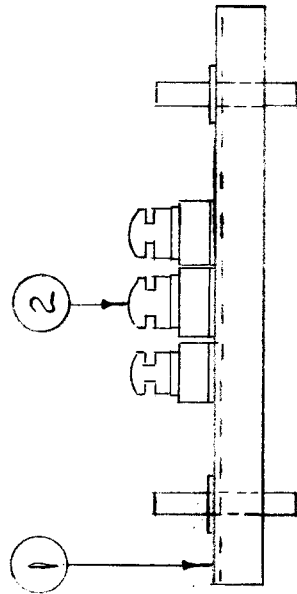
IF IT IS FOUND DESIRABLE TO CHANGE ANY TOLERANCE OR OTHER DETAIL SPECIFIED ON THIS DRAWING NOTIFY THE PURCHASER PROMPTLY.

MAXIMUM ALLOWABLE TOLERANCES HAVE BEEN DETERMINED AND DEVIATIONS WILL BE CAUSE FOR REJECTION. REMOVE ALL BURRS AND SHARP EDGES



$\pm .005$
 $\pm .000$
.172 D. 3 HOLES REQ.

METAL STAMP IN-OUT - C
SHOWN. 1/8 HIGH.



BX-113

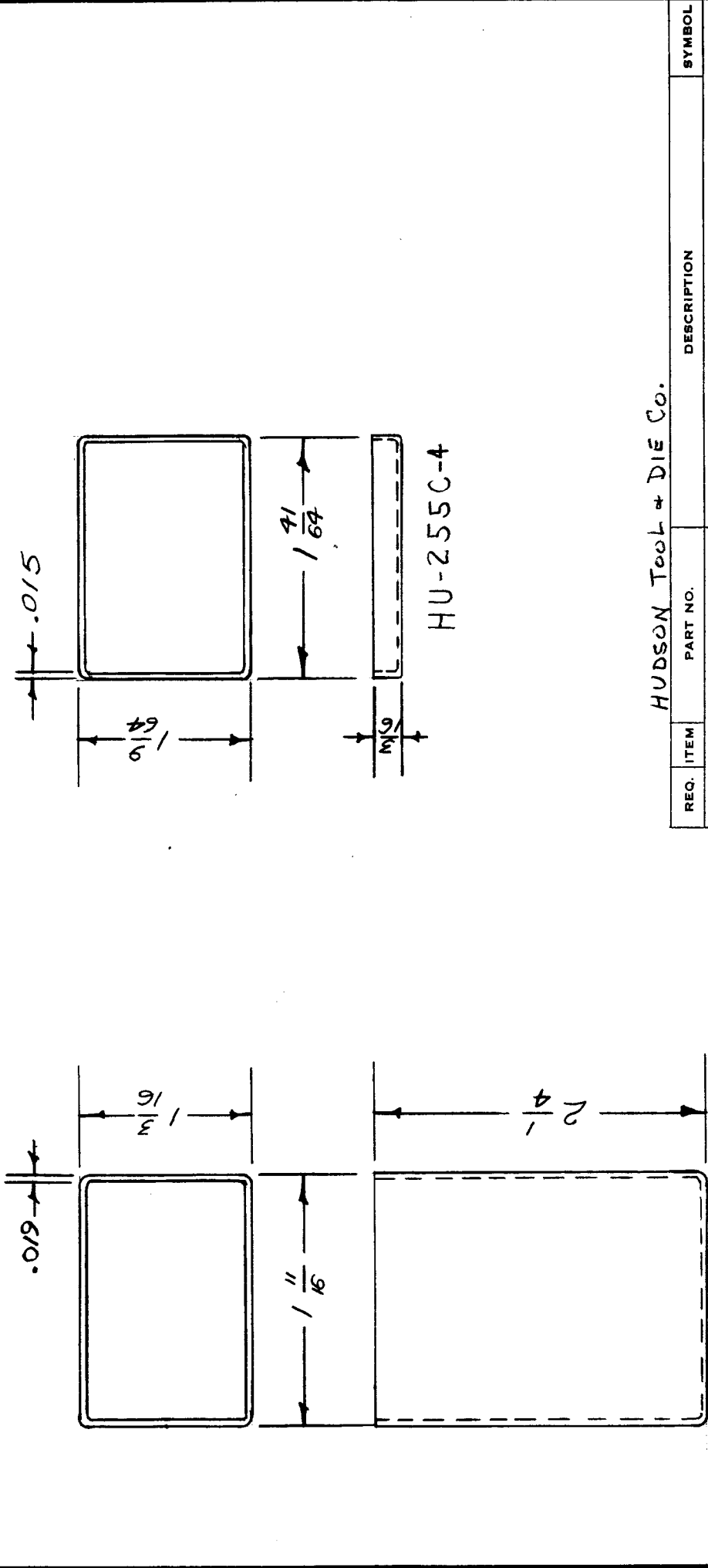
USED ON	
MODEL	PROJECT NO.
	ASSY. NO.
	DATE

3	2	TE-134	LUG, TERMINAL	
1	1	BX-100-9D	CASE, TRANSFORMER	
REQ. ITEM		PART NO.	DESCRIPTION	SYMBOL
		#	THE TECHNICAL MATERIEL CORP. MAMARONECK. NEW YORK	
			TERMINAL ASSEMBLY (DRILLING PLAN)	
			M.H.S. 5-22-53 A. J. Jo	
			DRAWN	ELEC. DES. APP.
			CHECKED	MECH. DES. APP.
			SUPERVISOR	FINAL APPROVAL
			A-471	BX-113

ISSUE ITEM	CHANGED FROM	DATE	CN. NO.	DRAFTS	CHECKER	ENG. APP.
TOLERANCES						
SCALE #						
ALL	DEC. DIM. \pm	DRILL, PUNCH, COMMERCIAL STOCK				
OTHERS	FRAC. DIM. \pm	SIZES AND MANUFACTURERS				
	ANGULAR DIM. \pm	TOLERANCES ARE NOT INCLUDED.				

IF IT IS FOUND DESIRABLE TO CHANGE ANY TOLERANCE OR OTHER DETAIL SPECIFIED ON THIS DRAWING NOTIFY THE PURCHASER PROMPTLY.

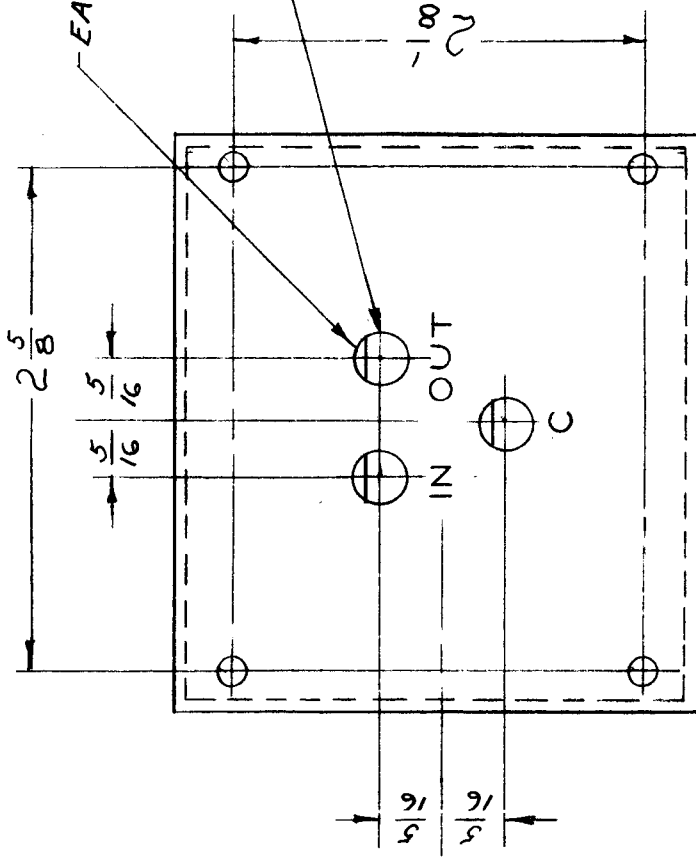
MAXIMUM ALLOWABLE TOLERANCES HAVE BEEN DETERMINED AND DEVIATIONS WILL BE CAUSE FOR REJECTION. REMOVE ALL BURRS AND SHARP EDGES



<p>IF IT IS FOUND DESIRABLE TO CHANGE ANY TOLERANCE OR OTHER DETAIL SPECIFIED ON THIS DRAWING NOTIFY THE PURCHASER PROMPTLY.</p>		<p>MAXIMUM ALLOWABLE TOLERANCES HAVE BEEN DETERMINED AND DEVIATIONS WILL BE CAUSE FOR REJECTION. REMOVE ALL BURRS AND SHARP EDGES</p>	
<p>USED ON</p>		<p>PROJECT NO.</p>	
<p>MODEL</p>		<p>ASSY. NO.</p>	
<p>DATE</p>		<p>DATE</p>	
<p>THE TECHNICAL MATERIEL CORP. MAMARONECK, NEW YORK</p>			
<p>CAN & COVER</p>			
<p>REQ. ITEM</p>			
<p>PART NO.</p>			
<p>DESCRIPTION</p>			
<p>SYMBOL</p>			
<p>STEEL</p>			
<p>STOCK SIZE</p>			
<p>MATERIAL</p>			
<p>WEIGHT PER PC.</p>			
<p>TYPE & TEMPER</p>			
<p>CHECKED</p>			
<p>HEAT TREAT. SPEC.</p>			
<p>FINISH & SPEC. NO.</p>			
<p>HUDSON TOOL & DIE CO.</p>			
<p>THE TECHNICAL MATERIEL CORP. MAMARONECK, NEW YORK</p>			
<p>CAN & COVER</p>			
<p>16-1-8-54</p>			
<p>DRAWN</p>			
<p>MECH. DES. APP.</p>			
<p>CHECKED</p>			
<p>FINAL APPROVAL</p>			
<p>BX-116</p>			
<p>A</p>			

IF IT IS FOUND DESIRABLE TO CHANGE ANY TOLERANCE OR OTHER DETAIL SPECIFIED ON THIS DRAWING NOTIFY THE PURCHASER PROMPTLY.

MAXIMUM ALLOWABLE TOLERANCES HAVE BEEN DETERMINED AND DEVIATIONS WILL BE CAUSE FOR REJECTION. REMOVE ALL BURRS AND SHARP EDGES



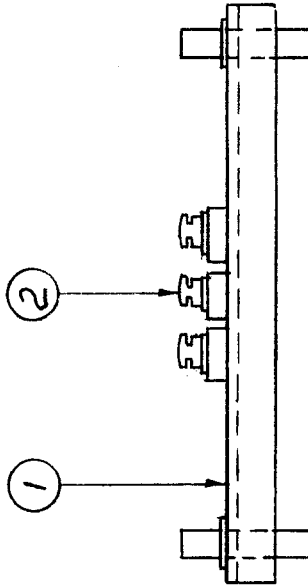
METAL STAMP IN, OUT & C AS SHOWN. 1/8 HIGH

BX-121

USED ON

REQ. PER UNIT	MODEL	PROJECT NO.	ASSY. NO.	DATE
1	FX-147		A-888	11/8/54

3	2	TE-134	LUG TERMINAL	SYMBOL
1	1	BX-100-14 D	CASE TRANSFORMER	
REQ. ITEM		PART NO.	DESCRIPTION	SYMBOL
			THE TECHNICAL MATERIEL CORP.	
		STOCK SIZE	MAMARONECK. NEW YORK	
		MATERIAL	TERMINAL ASSEMBLY	
		WEIGHT PER PC.	(DRILLING PLAN)	
		TYPE & TEMPER		
		HEAT TREAT. SPEC.		
		FINISH & SPEC. NO.		
DRAWN		ELEC. DES. APP.	MECH. DES. APP.	
P.B. 11-154		A.S.J.	M.H.S.	
CHECKED				
Supercedes				
A-971				
				BX-121



ISSUE ITEM	CHANGED FROM	DATE	CN. NO.	DRAFTS	CHECKER	ENG. APP.
TOLERANCES						
SCALE						
DEC. DIM. ±						
FRAC. DIM. ±						
OTHERS						
ANGULAR DIM. ±						
DRILL, PUNCH, COMMERCIAL STOCK SIZES AND MANUFACTURERS TOLERANCES ARE NOT INCLUDED.						

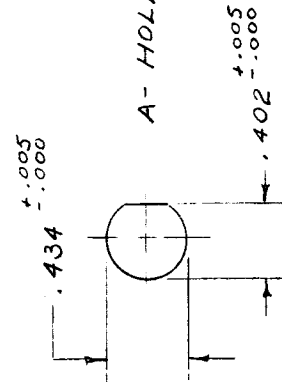
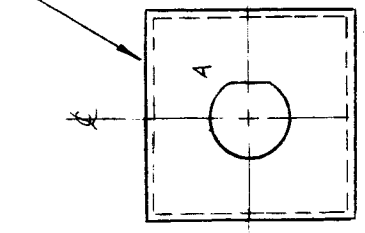
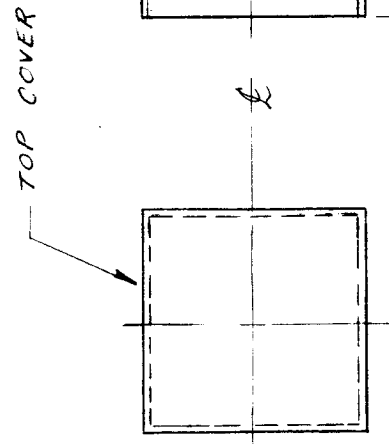
IF IT IS FOUND DESIRABLE TO CHANGE ANY TOLERANCE OR OTHER DETAIL SPECIFIED ON THIS DRAWING NOTIFY THE PURCHASER PROMPTLY.

MAXIMUM ALLOWABLE TOLERANCES HAVE BEEN DETERMINED AND DEVIATIONS WILL BE CAUSE FOR REJECTION. REMOVE ALL BURRS AND SHARP EDGES

BX-131 A

USED ON	
REQ. PER UNIT	PROJECT NO.
1	RBT-1
MODEL	ASSY. NO.
RBT-1	A-947
	DATE
	3-3-55

A947



NOTE:
NO STUDS ON TOP OR BOTTOM COVERS

REF: TMC-NO. # BX-100-3 (HELDOR CAT. NO. 102-AK)

REQ. ITEM	PART NO.	DESCRIPTION	SYMBOL
.019	.025	THE TECHNICAL MATERIEL CORP.	
STEEL		MAMARONECK. NEW YORK	
		CASE TRANSFORMER	
		WEIGHT PER PC.	
		TYPE & TEMPER	
		CHECKED	
		HEAT TREAT. SPEC.	
		FINISH & SPEC. NO.	
		DRAWN	
		ELEC. DES. APP.	
		MECH. DES. APP.	
		FINAL APPROVAL	

ISSUE ITEM	CHANGED FROM	DATE	CN. NO.	DRAFTS CHECKER	ENG. APP.
A 1	FINISH WAS ELECTRO TIN	8/3/55	1	WAD	WAD
TOLERANCES					
DEC. DIM. \pm					
ALL OTHERS					
FRAC. DIM. $\pm 1/64$					
ANGULAR DIM. \pm					
DRILL, PUNCH, COMMERCIAL STOCK SIZES AND MANUFACTURERS TOLERANCES ARE NOT INCLUDED.					

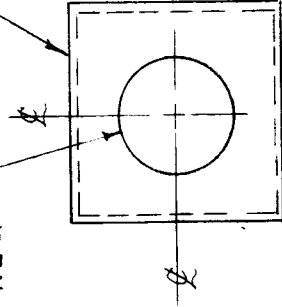
IF IT IS FOUND DESIRABLE TO CHANGE ANY TOLERANCE OR OTHER DETAIL SPECIFIED ON THIS DRAWING NOTIFY THE PURCHASER PROMPTLY.

MAXIMUM ALLOWABLE TOLERANCES HAVE BEEN DETERMINED AND DEVIATIONS WILL BE CAUSE FOR REJECTION. REMOVE ALL BURRS AND SHARP EDGES

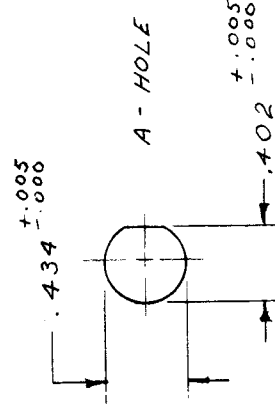
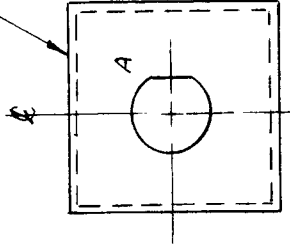
BX-132 A

USED ON	
REQ. PER UNIT	PROJECT NO.
1	A-948
MODEL	DATE
KBT-2	3-3-55

39/64 (.609) DRILL
1 HOLE REQ.



BOTTOM COVER



NOTE
NO STUDS ON TOP OR
BOTTOM COVERS

REF: TMC NO. # BX-100-3 (HELDOR CAT. NO. # 102 AK)

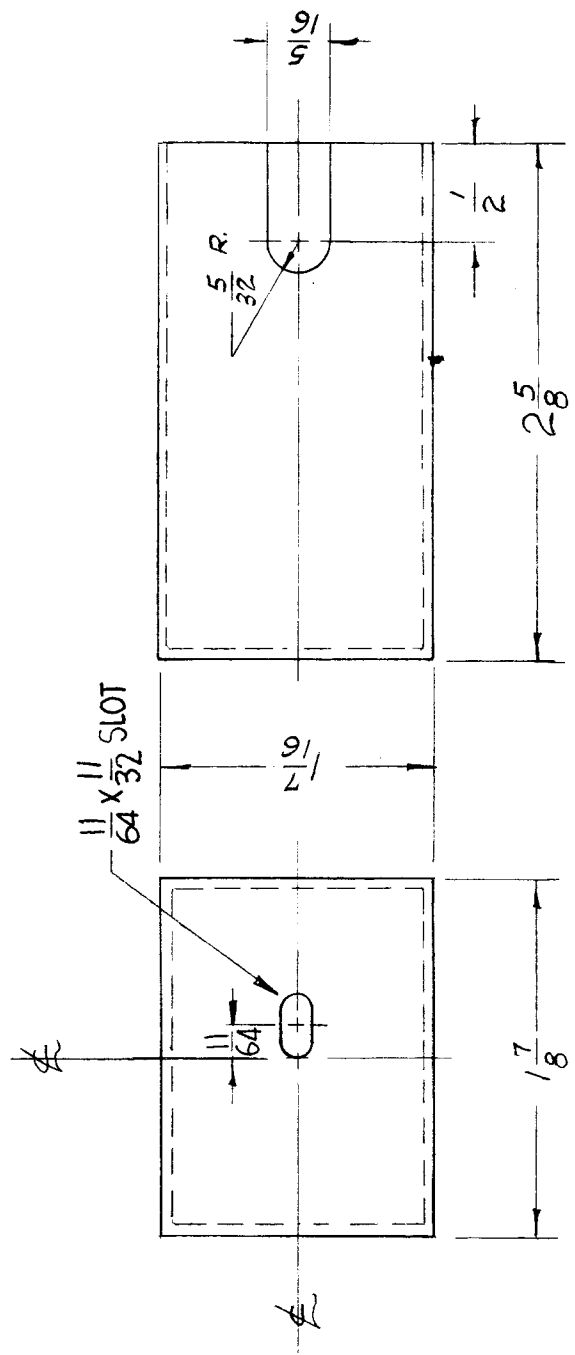
REQ. ITEM	PART NO.	DESCRIPTION	SYMBOL
.019 - .025		THE TECHNICAL MATERIEL CORP.	
STEEL		MAMARONECK. NEW YORK	
		CASE TRANSFORMER	
		WEIGHT PER PC.	
		TYPE & TEMPER	
		HEAT TREAT. SPEC.	
		FINISH & SPEC. NO.	

ISSUE ITEM	CHANGED FROM	DATE	CN. NO.	DRAFTS	CHECKER	ENG. APP.
A 1	FINISH WAS ELECTRO TIN.	0800	1			
SCALE						
TOLERANCES						
DEC. DIM. ±						
FRAC. DIM. ± 1/64						
OTHERS ANGULAR DIM. ±						
DRILL, PUNCH, COMMERCIAL STOCK SIZES AND MANUFACTURERS TOLERANCES ARE NOT INCLUDED.						

DRAWN	P.B. 3-3-55	ELEC. DES. APP.	WB
CHECKED	JAS	MECH. DES. APP.	CRB
FINAL APPROVAL			
		BX-132 A	

BX-142 B

RE. PER UNIT	MODEL	USED ON
1	GPR(S)(R)	ASSY. NO.
		DATE
		8-29-55



MODIFY BX-102-1 AS SHOWN

REQ. ITEM	PART NO.	DESCRIPTION	SYMBOL
BX-102-1		THE TECHNICAL MATERIEL CORP. MAMARONECK, NEW YORK	B
	STOCK SIZE	DUST COVER	
	MATERIAL	AUDIO SELECTIVE NETWORK	
	TYPE & TEMPER	1/8 8-29-55	
	HEAT TREAT. SPEC.	CHECKED	WDC
	FINISH & SPEC. NO.	DRAWN	WDC
		ELEC. DES. APP. MECH. DES. APP.	BX-142 B
			FINAL APPROVAL

ISSUE ITEM	CHANGED FROM	DATE	CH. NO.	DRAFTS	CHECKER	ENG. APP.
B	SLOT WAS 3/16D HOLE	5/24/61	4943	DM	JCS	WDC
A	NOTCH MOVED	12-22-47	1	RS	JCS	WDC

SCALE:

TOLERANCES

MAXIMUM ALLOWABLE TOLERANCES HAVE BEEN DETERMINED AND ANY DEVIATIONS WILL BE CAUSE FOR REJECTION.

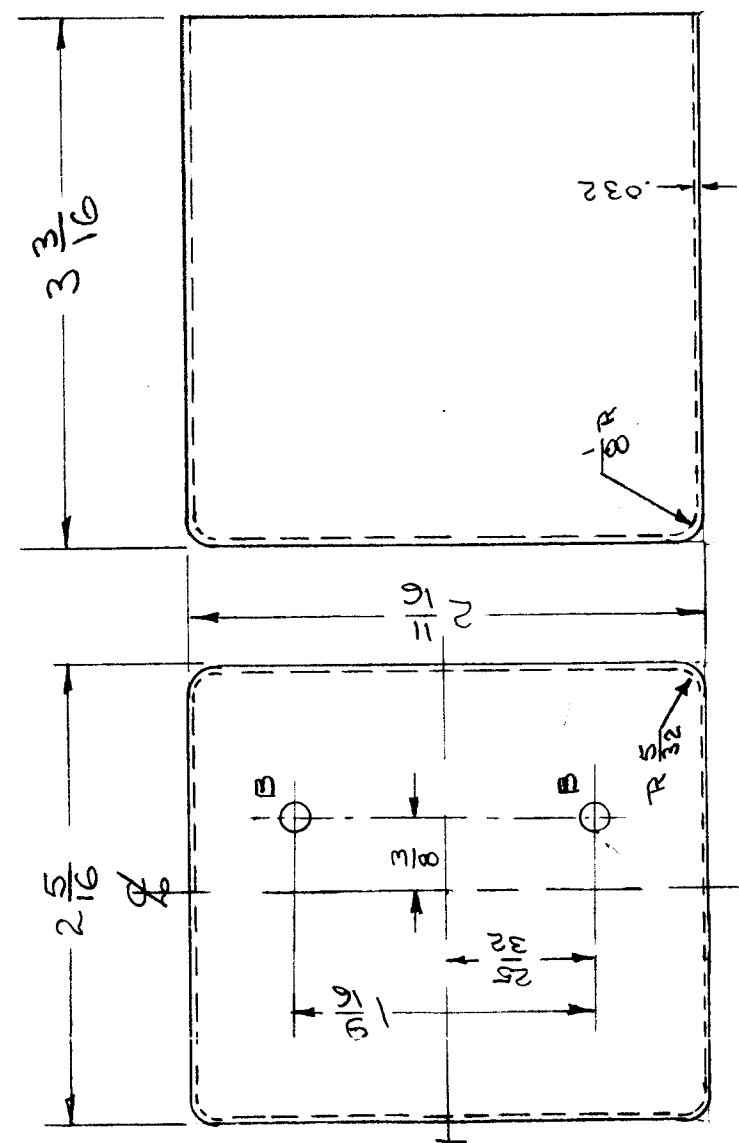
REMOVE ALL BURRS AND SHARP EDGES

DEC. DIM. ±

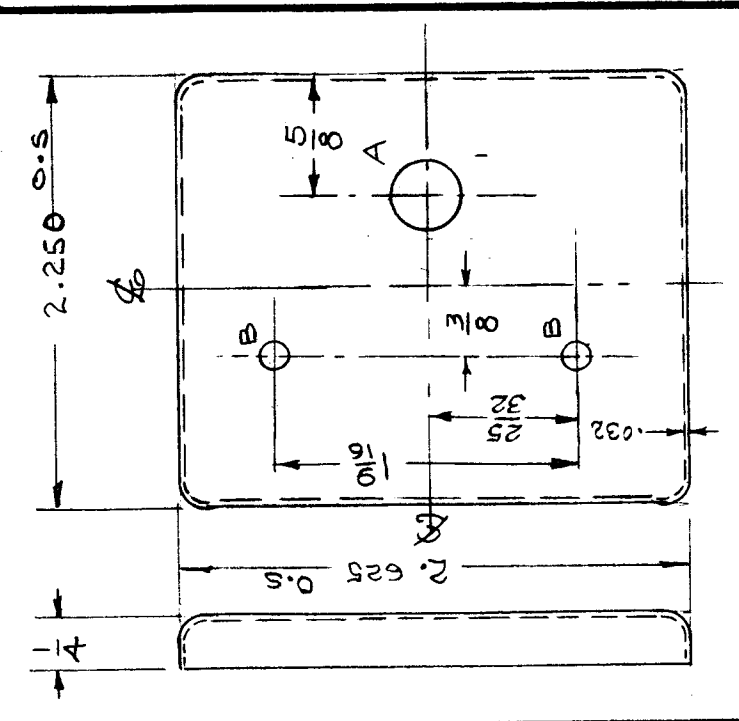
FRAC. DIM. ± 1/64

ANGULAR DIM. ±

REQ. PER UNIT	MODEL	USED ON
1	FX-151	ASS'Y. NO.
		DATE
		3-1-57
		BX-151
		B



CASE



COVER

A = 3/8 D - 1 HOLE
 B = 5/32 D - 4 HOLES

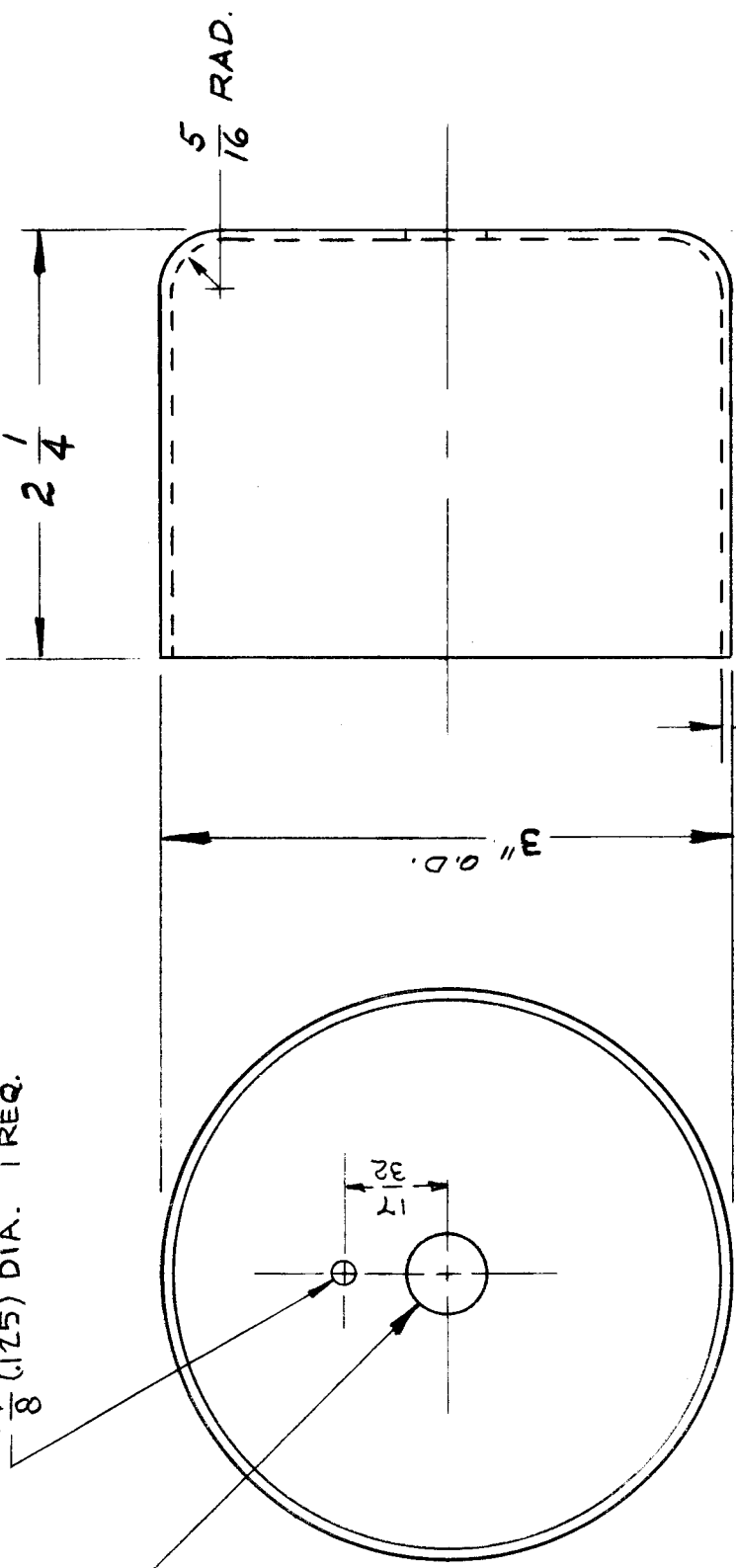
REF: HUDSON TOOL & DIE CO. { CASE: HU-742-1
 COVER: HU-151C-1

REQ. ITEM	PART NO.	DESCRIPTION	SYMBOL
	.032	STOCK SIZE	
		ALUMINUM	
		MATERIAL	
		TYPE & TEMPER	HEAT TREAT. SPEC.
		S-114 ZINC CHROMATE	
		S-115 TMC GRAY	
		FINISH & SPEC. NO.	
ISSUE ITEM	CHANGED FROM	DATE	CH. NO.
1	finish was S-107	6/10/57	3
A	"B" HOLES RELOCATED	3-8-57	2
	"A" HOLE RELOCATED		1
		DATE	CH. NO.
		DRAFTS	CHECKER
		ENG. APP.	
SCALE:			
TOLERANCES			
MAXIMUM ALLOWABLE TOLERANCES HAVE BEEN DETERMINED AND ANY DEVIATIONS WILL BE CAUSE FOR REJECTION.			
REMOVE ALL BURRS AND SHARP EDGES			
DEC. DIM. ±			
FRAC. DIM. ±	VGA		
ANGULAR DIM. ±			
		DRAWN	CHECKED
		MECH. DES. APP.	MECH. DES. APP.
		ELEC. DES. APP.	ELEC. DES. APP.
		FINAL APPROVAL	FINAL APPROVAL
		BX-151	B

REQ. PER UNIT	MODEL	USED ON ASSY. NO.	DATE
1	RTP-2	BX-169	10-16-58

1/8 (125) DIA. 1 REQ.

25/64 DIA.



REF: ZERO - PART NO ZR48-36

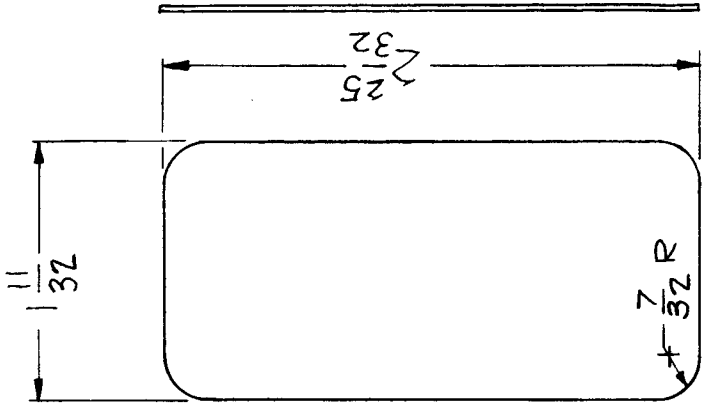
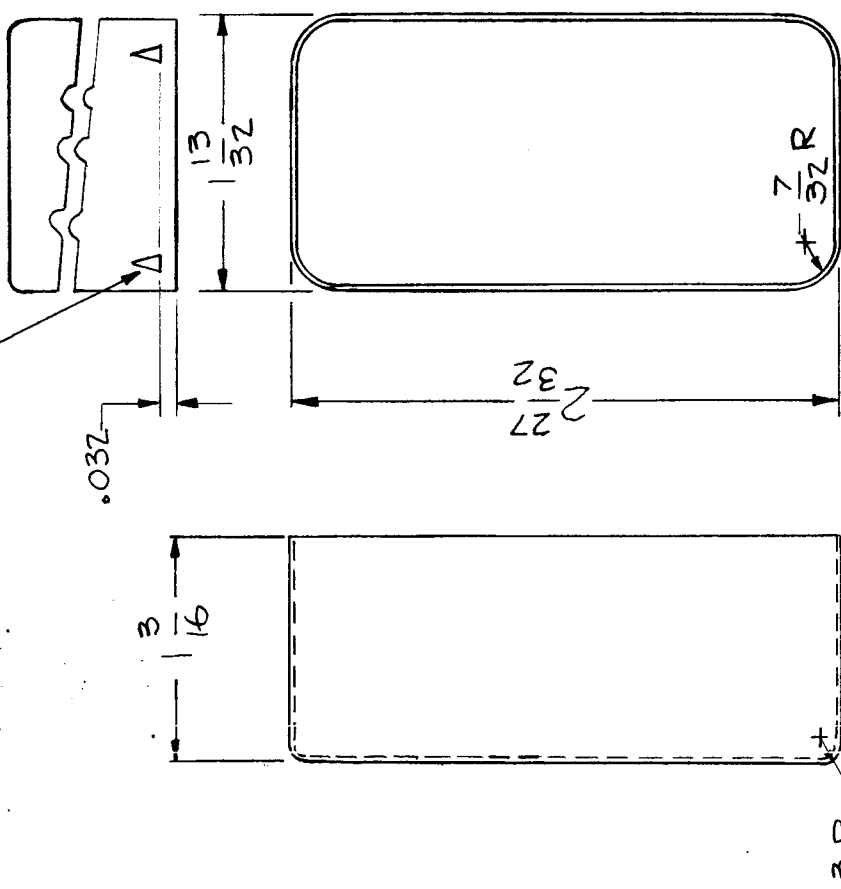
REQ. ITEM	PART NO.	DESCRIPTION	SYMBOL
B 1	.051	THE TECHNICAL MATERIEL CORP. MAMARONECK. NEW YORK	B
A 1	ALUMINUM	ROUND CAM	B
ISSUE ITEM	MATERIAL	RTP-2	
CHANGED FROM	3003	TOBLES	
DATE	CH. NO.	DRAFTS	CHECKER
11/058	1	JCB	ENG. APP.
12-9-59	1001	P	
SCALE:			
MAXIMUM ALLOWABLE TOLERANCES HAVE BEEN DETERMINED AND ANY DEVIATIONS WILL BE CAUSE FOR REJECTION. REMOVE ALL BURRS AND SHARP EDGES			
DEC. DIM. ±			
FRAC. DIM. ±	1/64		
ANGULAR DIM. ±			
TYPE & TEMPER		HEAT TREAT. SPEC.	FINISH & SPEC. NO.
S404 IRIDITE			10-16-58
FINISH & SPEC. NO.		ELEC. DES. APP.	MECH. DES. APP.
		MEC	REB
		DRAWN	CHECKED
		10-16-58	10-16-58
		MEC	REB
		FINAL APPROVAL	
			BX-169

REQ. PER UNIT
1

MODEL
BX-173

USED ON
ASSY. NO. - 20-39
DATE

FOR COVER DIMPS
DIMPLE BOTH SIDES.



NOTE ~
COVER MUST FIT
INSIDE OF CAN.

REF ~ HUDSON # 384-2 | COVER (HU-384-2H)

REQ. ITEM	PART NO.	DESCRIPTION	SYMBOL
		THE TECHNICAL MATERIEL CORP. MAMARONECK, NEW YORK	
		BLANK, CASE AND COVER	
		MATERIAL	
		BRASS	
		STOCK SIZE	
		.025 THICK	
ISSUE ITEM	CHANGED FROM	DATE	CH. NO.
		DRAFTS	CHECKER
		ENG. APP.	
TOLERANCES			
SCALE:			
MAXIMUM ALLOWABLE TOLERANCES HAVE BEEN DETERMINED AND ANY DEVIATIONS WILL BE CAUSE F R REJECTION: REMOVE ALL BURRS AND SHARP EDGES			
DEC. DIM. ±			
FRAC. DIM. ±			
ANGULAR DIM. ±			
		J.C. BIELE	
		DRAWN	
		CHECKED	
			FINAL APPR VAL
			BX-173
		ELEC. DES. APP	
		MECH. DES. APP	

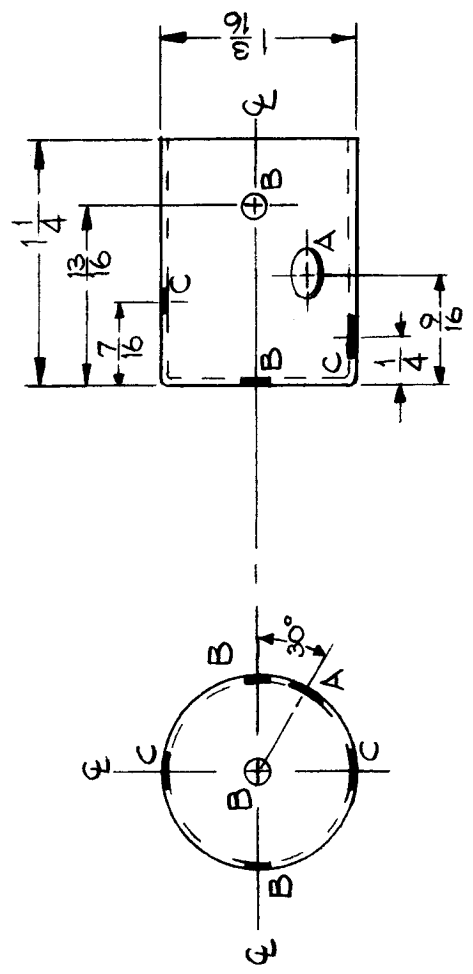
REQ. PER. UNIT	MODEL	USED ON	DATE
2	CU-2	A-179S	11-2-59
			BX-187
			A

HOLES REQ'D.

A ~ 3/32 (.093) Dia. 1

B ~ 1/8 (.125) " 3

C ~ 17/64 (.266) " 2

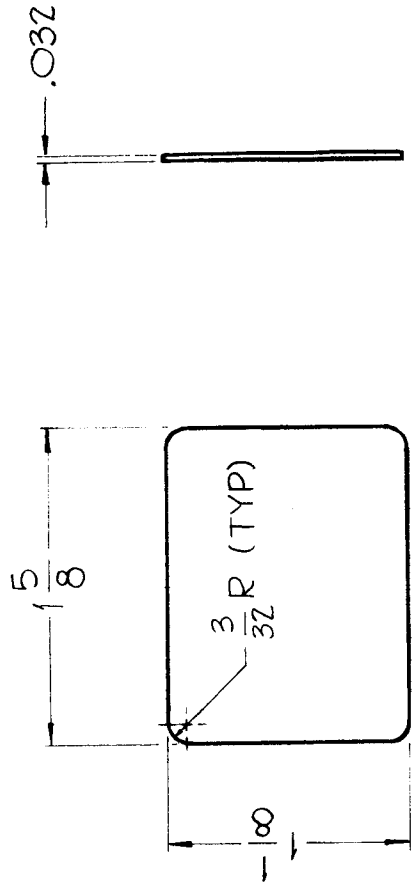


REF~HUDSON TOOL & DIE CO.

REQ. ITEM	PART NO.	DESCRIPTION	SYMBOL
	.019 THICK	THE TECHNICAL MATERIEL CORP.	
	STOCK SIZE	MAMARONECK, NEW YORK	
	BRASS	CAN, ROUND	
	MATERIAL		
	HEAT TREAT. SPEC.		
	NONE		
	FINISH & SPEC. NO.		
ISSUE ITEM	CHANGED FROM	D.MANCUSO	
A 1	"C" holes were 7/32 DIA.	Checked	
DATE	CH. NO.	DRAFTS	
3/29/61	4958	DRM	
CHECKER	ENG. APP.		
JMS			
SCALE: DO NOT SCALE			
TOLERANCES			
MAXIMUM ALLOWABLE TOLERANCES HAVE BEEN DETERMINED AND ANY DEVIATIONS WILL BE CAUSE FOR REJECTION. REMOVE ALL BURRS AND SHARP EDGES			
DEC. DIM. ±			
FRAC. DIM. ± 1/64			
ANGULAR DIM. ±			
		DRAWN	CHECKED
		ME	JMS
		FINAL APPROVAL	
			BX-187
			A

REQ. PER. UNIT	MODEL	USED ON ASSY. NO.	DATE
		BX-191	

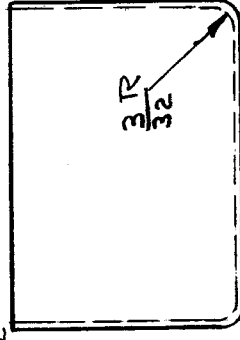
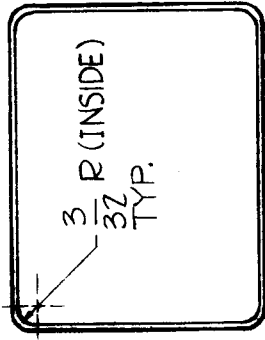
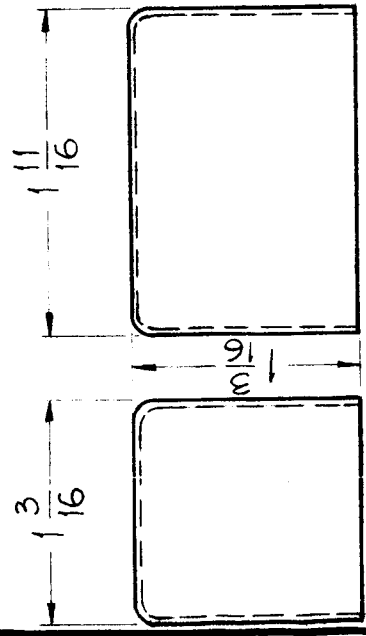
NOTE
COVER MUST FIT INSIDE OF CASE.



COVER

MAT'L - .032 THICK BRASS
MFG. NO. - HU 255 C-2

REF. HUDSON TOOL & DIE CO.



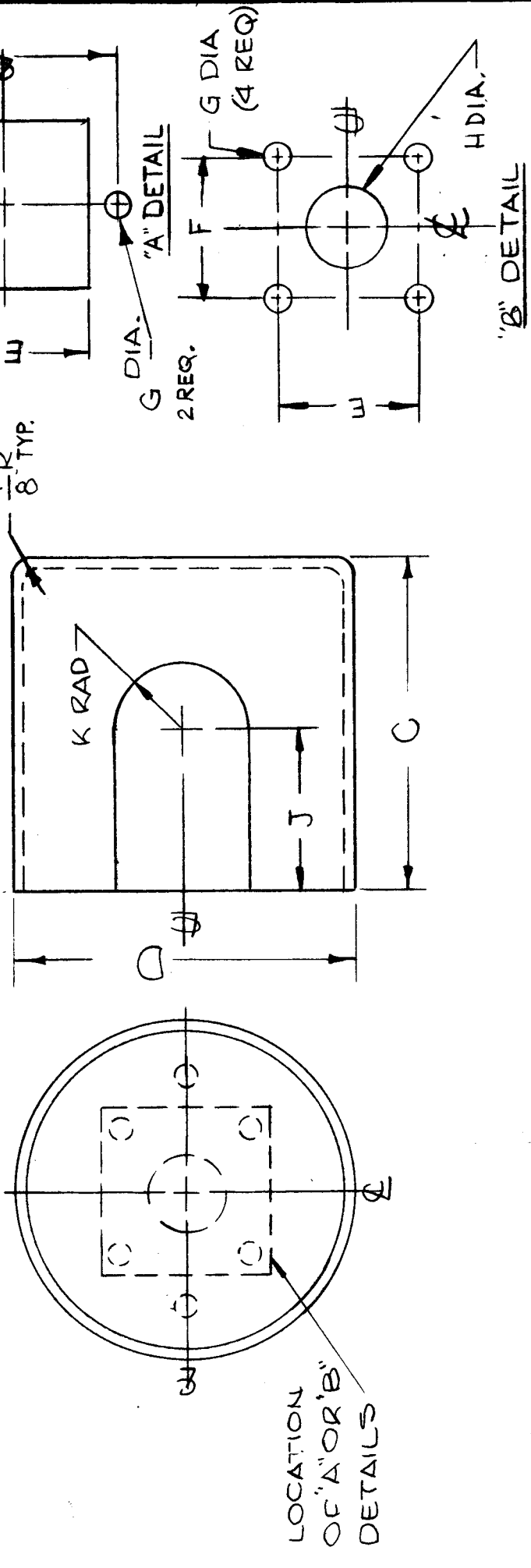
CASE

MAT'L .C19 TH'K
BRASS
MFG. NO.: HU255-2

REQ. ITEM	PART NO.	DESCRIPTION	SYMBOL
		THE TECHNICAL MATERIEL CORP. MAMARONECK, NEW YORK	
		CAN & COVER	
ISSUE ITEM	CHANGED FROM	CHECKED	FINAL APPROVAL
		John C. Biele	C
TOLERANCES		DRAWN	
DEC. DIM. ±		16	BX-191
FRAC. DIM. ± 1/64			
ANGULAR DIM. ±			
SCALE: FULL - DO NOT SCALE		ELEC. DES. APP. MECH. DES. APP.	
MAXIMUM ALLOWABLE TOLERANCES HAVE BEEN DETERMINED AND ANY DEVIATIONS WILL BE CAUSE FOR REJECTION. REMOVE ALL BURRS AND SHARP EDGES			

REQ. PER. UNIT: 1
 MODEL: RAK-9
 USED ON: BX-192 C
 ASS'Y. NO.:
 DATE: 6-19-61

PART/NO.	DETAIL	C	D	E	F	G	H	J	K	R
BX 192	A	2-7/32	2-1/4	1-1/8	1-1/2	11/64				
BX 192-2	B	2-3/8	2-1/4	15/16	15/16	11/64	17/32			
BX 192-3	A	2-3/16	2-1/4	1-5/16	1-3/4	9/64				1/8R
BX 192-4	A	2-5/16	2-1/4	1-5/16	1-3/4	9/64		1-1/16	7/16	1/8R



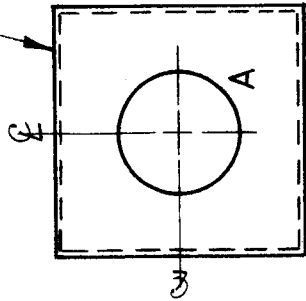
REQ. ITEM	DESCRIPTION	SYMBOL
	THE TECHNICAL MATERIEL CORP. MAMARONECK, NEW YORK	
	R.F. SHIELD CAN	
	5052-H32	
	ALUMINUM	
	S404 YELLOW IRIDITE	
	5401-28	
	MAXIMUM ALLOWABLE TOLERANCES HAVE BEEN DETERMINED AND ANY DEVIATIONS WILL BE CAUSE FOR REJECTION. REMOVE ALL BURRS AND SHARP EDGES	
	DEC. DIM. ±	
	FRAC. DIM. ± 1/64	
	ANGULAR DIM. ±	

A - $\frac{5}{8}$ DIA 2 HOLES

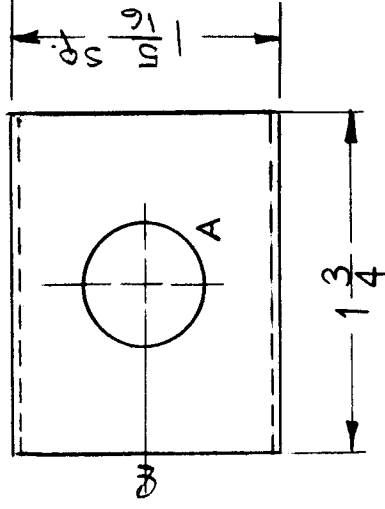
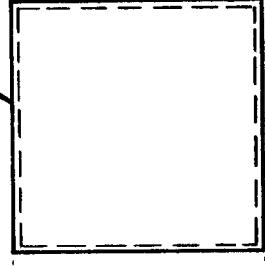
REQ. PER. UNIT	MODEL	USED ON
1	RBT-4	ASSY. NO.
		DATE
		6-26-61

BX-193

TOP COVER



BOTTOM COVER



NOTE~
NO STUDS ON TOP OR
BOTTOM COVERS.

REF: TMC # BX-100-3

REQ. ITEM	PART NO.	DESCRIPTION	SYMBOL
	.019-.025	THE TECHNICAL MATERIEL CORP.	
	STOCK SIZE	MAMARONECK, NEW YORK	
	STEEL	CASE TRANSFORMER	
	MATERIAL		
	TYPE & TEMPER	DRAWN	CHECKED
	HOT TINNED	W.A.F.	J.S.
	HEAT TREAT. SPEC.		
	FINISH & SPEC. NO.	C.G.	
		ELEC. DES. APP.	MECH. DES. APP.
			FINAL APPROVAL
			BX-193

SCALE: FULL (Do Not Scale).
MAXIMUM ALLOWABLE TOLERANCES HAVE BEEN DETERMINED AND ANY DEVIATIONS WILL BE CAUSE FOR REJECTION. REMOVE ALL BURRS AND SHARP EDGES

TOLERANCES
DEC. DIM. ±
FRAC. DIM. ± 1/64
ANGULAR DIM. ±