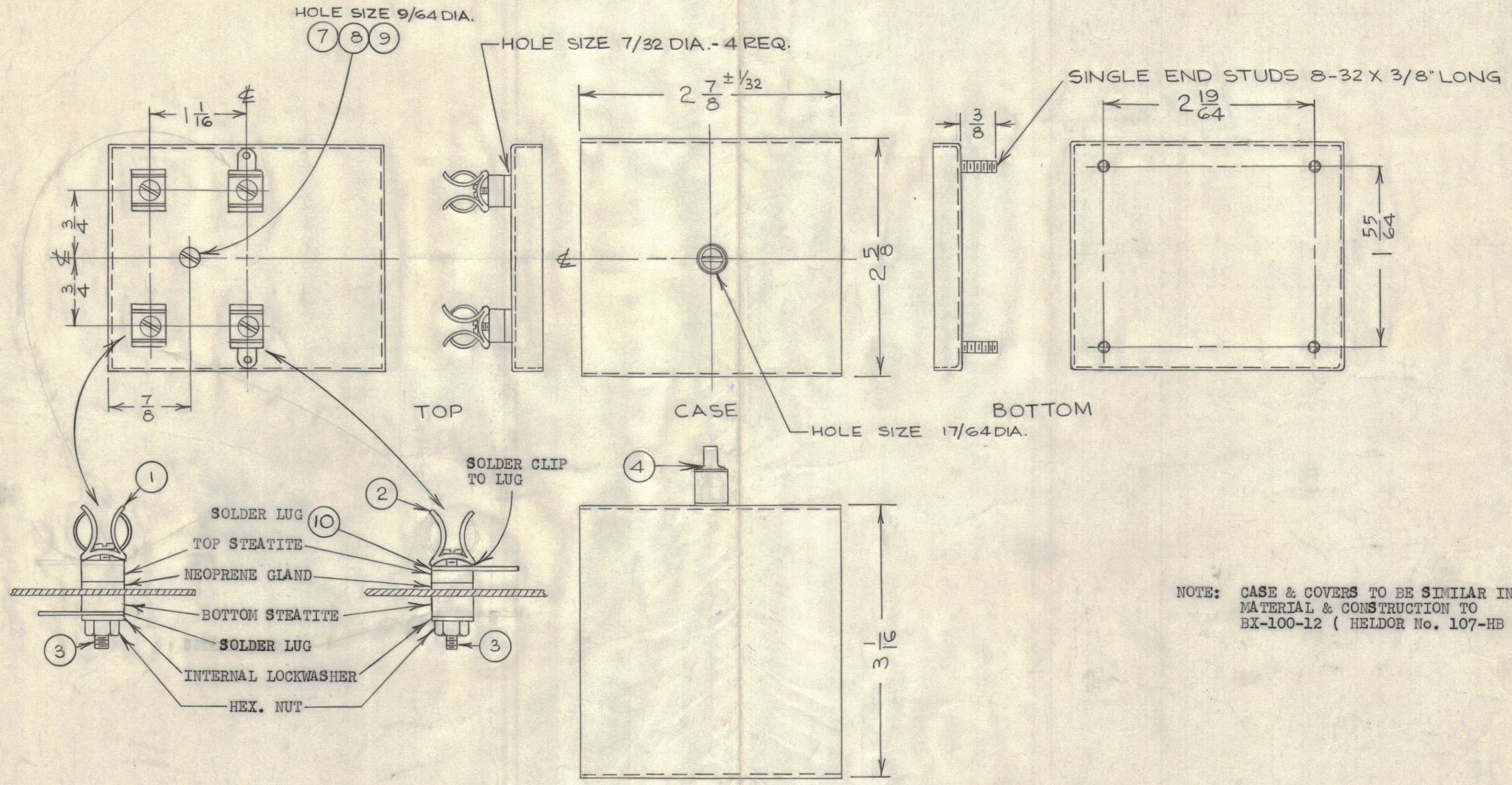


IF IT IS FOUND DESIRABLE TO CHANGE ANY TOLERANCE OR OTHER DETAIL SPECIFIED ON THIS DRAWING NOTIFY THE PURCHASER PROMPTLY.		DIMENSIONS IN INCHES UNLESS OTHERWISE SPECIFIED					
MAXIMUM ALLOWABLE TOLERANCES HAVE BEEN DETERMINED AND DEVIATIONS WILL BE CAUSE FOR REJECTION. REMOVE ALL BURRS AND SHARP EDGES.							
ISSUE	ITEM	CHANGED FROM	DATE	CN. NO.	DRAFTS	CHECKER	ENG. APP.

REQ.	ITEM	PART NO.	DESCRIPTION	SYMBOL
2	1	FC-102-1-XX-C	FUSE CLIP, EARLESS	
2	2	FC-102-1-X-C	FUSE CLIP, EARS	
4	3	SCBS0440BN16	SCREW, MACHINE	
1	4	TE-101-3	BUSHING, SLOTTED	
4	5	TE-101-2	BUSHING, SLOTTED	
X	6	BS-100	SOLDER, SOFT	
1	7	SCBS0632BN4	SCREW	
1	8	NTH0632BN4	NUT	
1	9	TE-104-2	SOLDER LUG	
1	10	TE-104-1	SOLDER LUG	



BX197

NOTE: CASE & COVERS TO BE SIMILAR IN MATERIAL & CONSTRUCTION TO BX-100-12 (HELDOR No. 107-HB)

REF : HELDOR MFG. CO.

DETAIL - CLIP MOUNTING

NOTE : SOLDER LUGS, NEOPRENE GLAND, TOP & BOTTOM STEATITE, LOCK WASHER & NUT ARE PART OF TE -101-2 (HELDOR No. 312-A). REPLACE STUD WITH ITEM 2 AS SHOWN.

NOTICE TO PERSONS RECEIVING THIS DRAWING

THE TECHNICAL MATERIEL CORPORATION claims proprietary right in the material disclosed hereon. This drawing is issued in confidence for engineering information only and may not be reproduced or used to manufacture anything shown hereon without permission from THE TECHNICAL MATERIEL CORPORATION to the user. This drawing is loaned for mutual assistance and is subject to recall at any time.

Property of:
THE TECHNICAL MATERIEL CORPORATION
MAMARONECK, NEW YORK

TRO88	E 2570-1	AUG 30/61
MODEL	PROJECT NO.	DATE

.032/.037 TK.	TMC (Canada) LIMITED OTTAWA ONTARIO	
STEEL	COVER & CASE ASS'Y	
HOT TIN DIPPED	JPC	M. W.
NONE	DR. J. L.	M. W.
	CHECKED	FINAL APPROVAL
		BX197