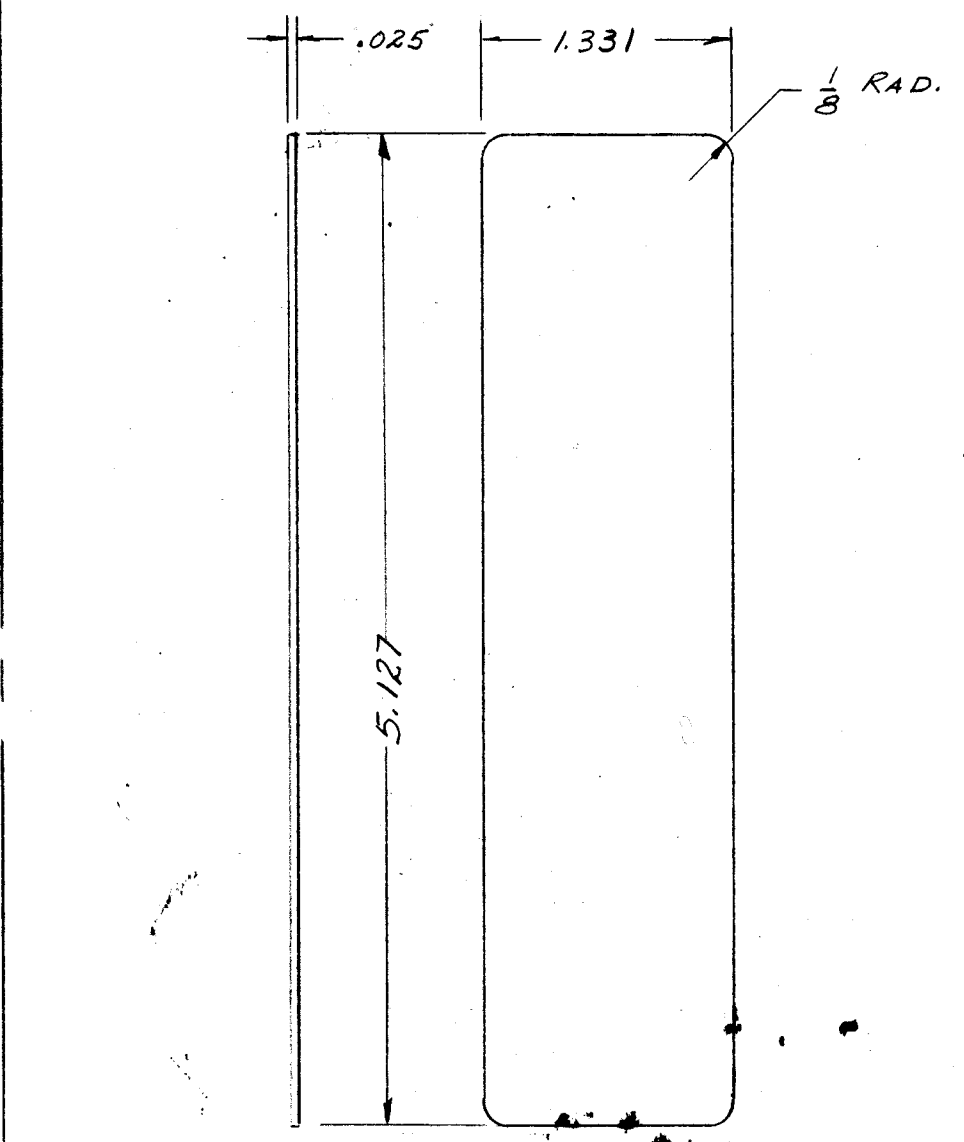
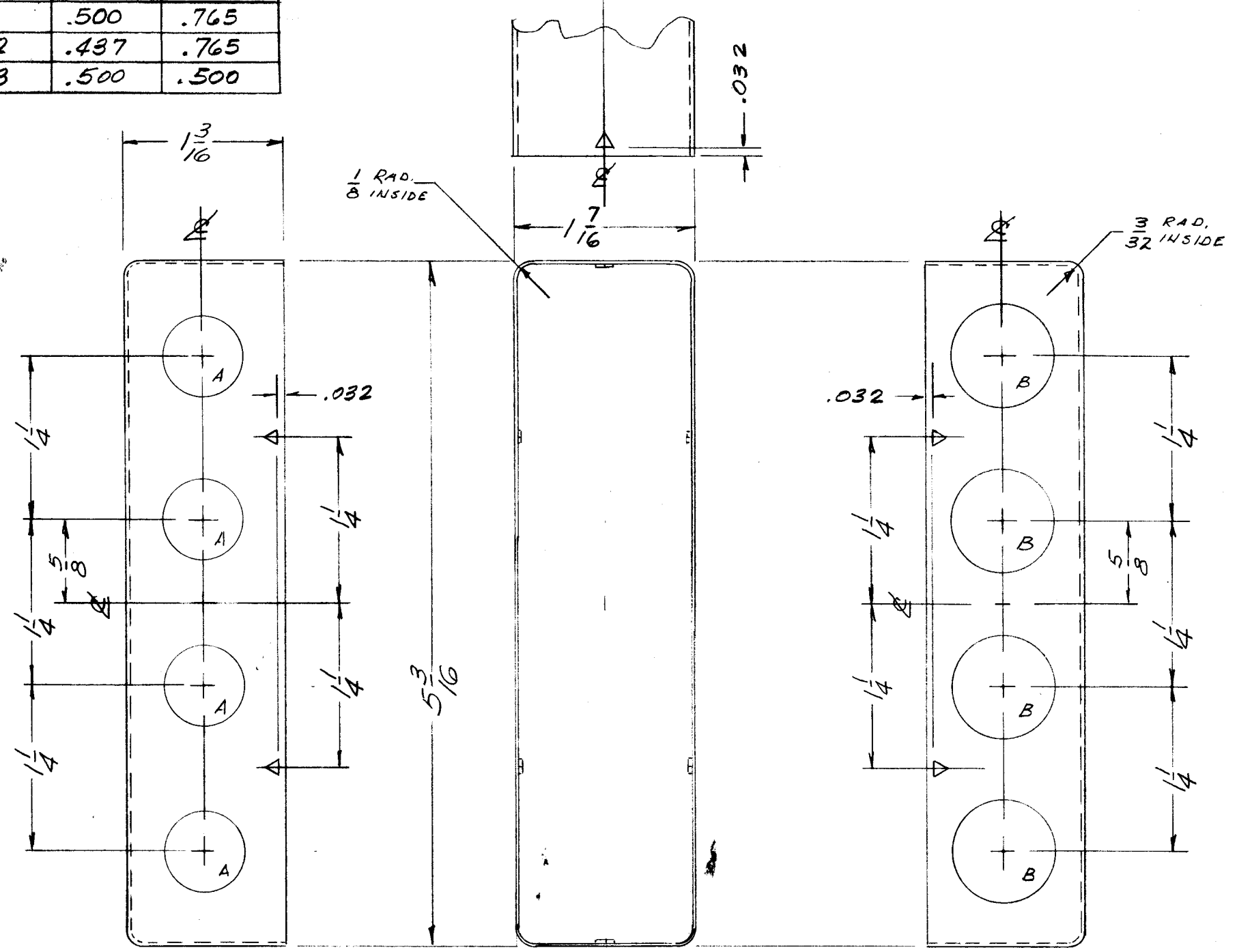
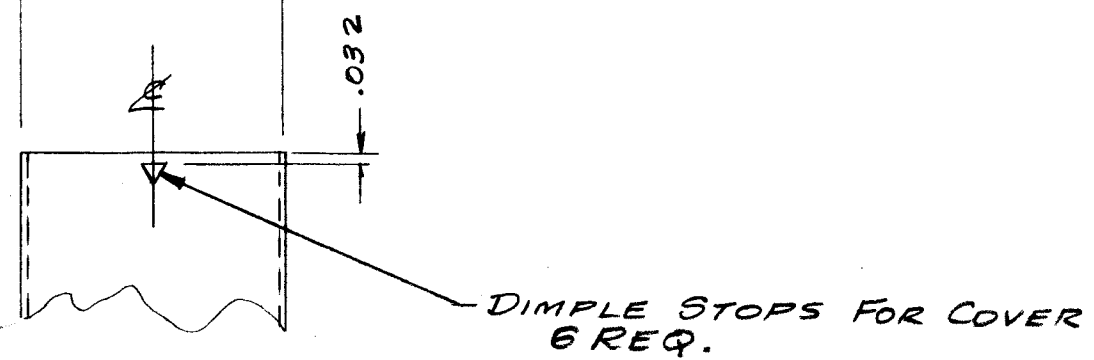


BX 179

TMC PART NO.	"A" DIA.	"B" DIA.
BX 179	.500	.765
BX 179-2	.437	.765
BX 179-3	.500	.500



NOTE: COVER MUST FIT INSIDE CASE



ISSUE	ITEM	CHANGED FROM	DATE	CH. NO.	DRAFTS	CHECKER	ENG. APP.
A		ADD. PIN CHART; .032 WAS .025; REV FINISH	4/11/66	16078	HLA	JCB	MMA

TOLERANCES: DEC. DIM. ± .005, FRAC. DIM. ± 1/64, ANGULAR DIM. ±

SCALE: C10

MAXIMUM ALLOWABLE TOLERANCES HAVE BEEN DETERMINED AND ANY DEVIATIONS WILL BE CAUSE FOR REJECTION. REMOVE ALL BURRS AND SHARP EDGES

1	JB-104			4-11-66
1	JB-101			4-23-59
REQ. PER UNIT	MODEL	PROJECT NO.	ASS'Y. NO.	DATE
USED ON				

REQ. ITEM	PART NO.	DESCRIPTION	SYMBOL
AS NOTED		THE TECHNICAL MATERIEL CORP. MAMARONECK, NEW YORK	CASE & COVER
STOCK SIZE			
BRASS		MATERIAL	
		4-23-59	
BRIGHT DIP		TYPE & TEMPER	HEAT TREAT. SPEC.
FINISH & SPEC. NO.		DRAWN	CHECKED
		FINAL APPROVAL	
		ELEC. DES. APP.	MECH. DES. APP.
		BX 179	A