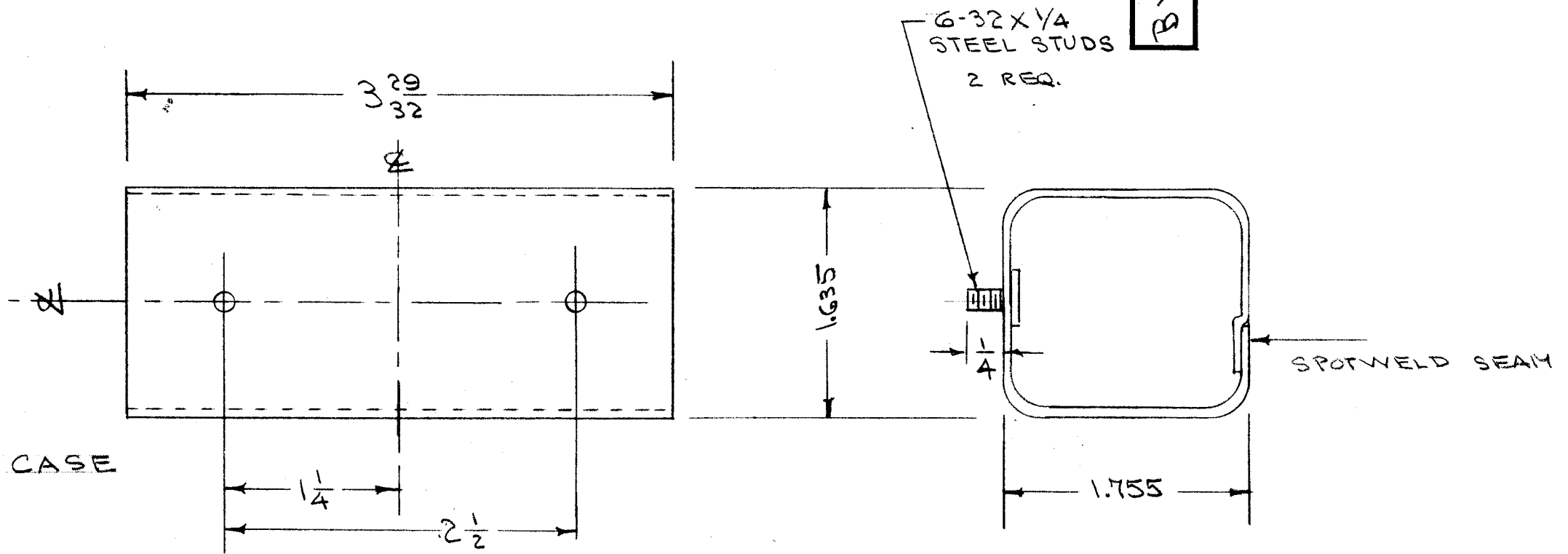


IF IT IS FOUND DESIRABLE TO CHANGE ANY TOLERANCE OR OTHER DETAIL SPECIFIED ON THIS DRAWING NOTIFY THE PURCHASER PROMPTLY.

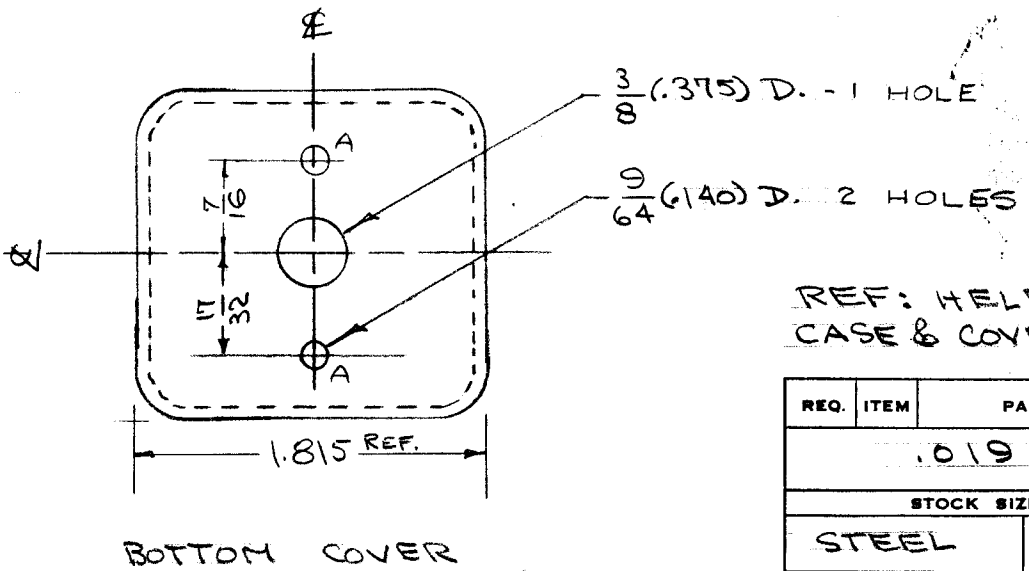
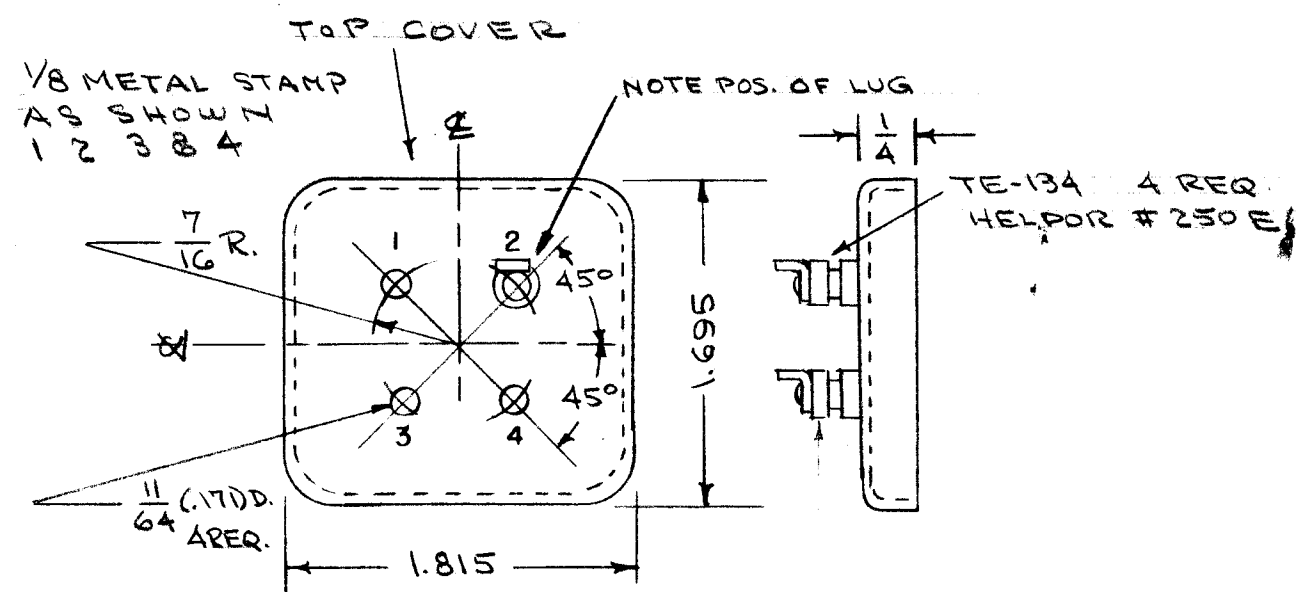
MAXIMUM ALLOWABLE TOLERANCES HAVE BEEN DETERMINED AND DEVIATIONS WILL BE CAUSE FOR REJECTION. REMOVE ALL BURRS AND SHARP EDGES

BX-122 E



NOTICE TO PERSONS RECEIVING THIS DRAWING
 THE TECHNICAL MATERIEL CORPORATION claims proprietary right in the material disclosed hereon. This drawing is issued in confidence for engineering information only and may not be reproduced or used to manufacture anything shown hereon without permission from THE TECHNICAL MATERIEL CORPORATION to the user. This drawing is loaned for mutual assistance and is subject to recall at any time.

Property of:
 THE TECHNICAL MATERIEL CORPORATION
 MAMARONECK, NEW YORK



REF: HELDOR MFG. CO. NO. 170
 CASE & COVERS MODIFIED AS SHOWN

ISSUE	ITEM	CHANGED FROM	DATE	CN. NO.	DRAFTS	CHECKER	ENG. APP.
E	1	'A' HOLE ADDED (1)	3-6/56	5	13	WJE	WJE
D	1	FINISH WAS ELECTRO TIN.	8/3/55	4	CDG	WJE	WJE
C	1	LETTERING ADDED	12-10-54	3	M.H.S.	WJE	KZ
B	1	STUDS MOVED	11/21/54	2	CDG	WJE	KZ
A	1	13/16 WAS 1/2	10/11/54	1	CDG	WJE	WJE

TOLERANCES		SCALE:	
ALL OTHERS	DEC. DIM. ± FRAC. DIM. ± ANGULAR DIM. ±	DRILL, PUNCH, COMMERCIAL STOCK SIZES AND MANUFACTURERS TOLERANCES ARE NOT INCLUDED.	

1	NF-104	170	A-847	9-26-54
MODEL	PROJECT NO.	ASS'Y. NO.	DATE	

REQ.	ITEM	PART NO.	DESCRIPTION	SYMBOL
		.019	THE TECHNICAL MATERIEL CORP. MAMARONECK, NEW YORK	
	STEEL	—	CAN, FREQ. DET. NETWORK	
			RSC-2	
			CDG 9/29/54	WJE
			DRAWN	ELEC. DES. APP.
			HEAT TREAT. SPEC.	MECH. DES. APP.
			HOT-TINNED	
			FINISH & SPEC. NO.	

CHECKED: J.A.D. 11/4/54
 FINAL APPROVAL: A.J.J.
 BX-122 E