

IF IT IS FOUND DESIRABLE TO CHANGE ANY TOLERANCE OR OTHER DETAIL SPECIFIED ON THIS DRAWING NOTIFY THE PURCHASER PROMPTLY.

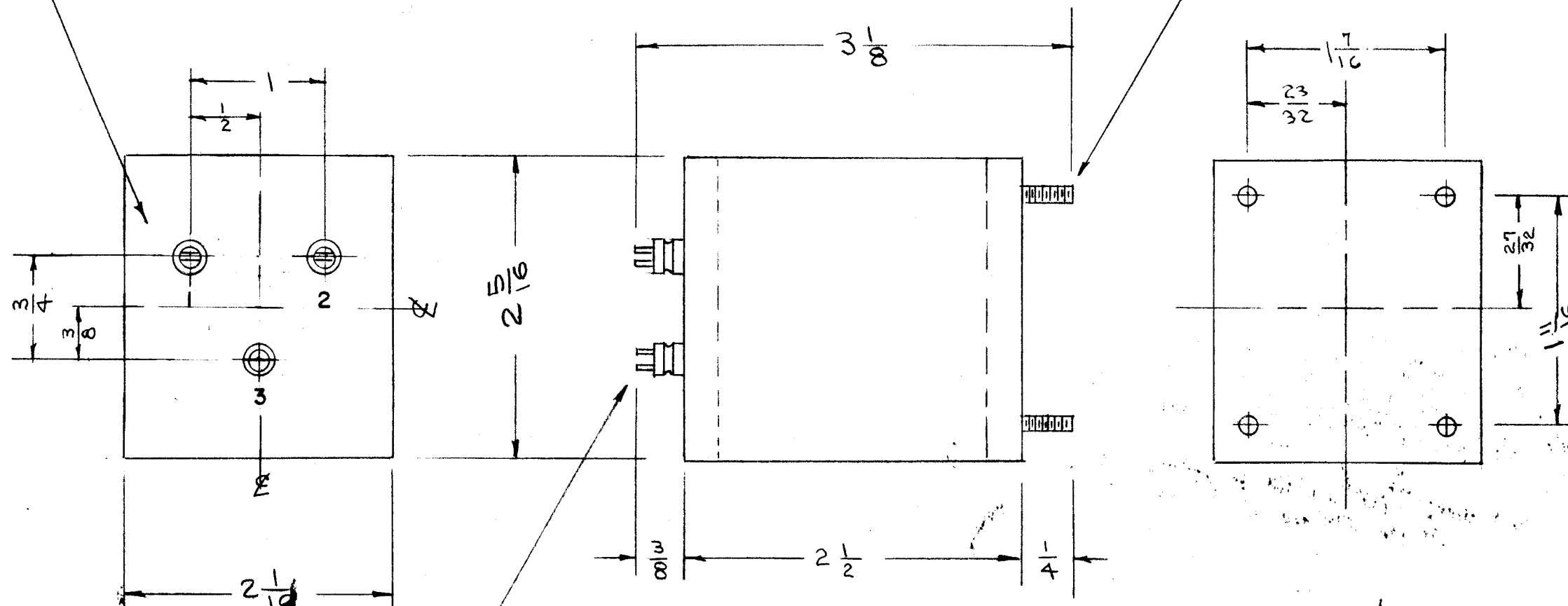
MAXIMUM ALLOWABLE TOLERANCES HAVE BEEN DETERMINED AND DEVIATIONS WILL BE CAUSE FOR REJECTION. REMOVE ALL BURRS AND SHARP EDGES

NUMERALS TO BE 1/8 HIGH METAL STAMP

BX-120 D

METAL STAMP AS SHOWN 1-2-3

6-32 x 1/4, SINGLE END - 4 REQ.



**NOTICE TO PERSONS RECEIVING THIS DRAWING**

THE TECHNICAL MATERIEL CORPORATION claims proprietary right in the material disclosed hereon. This drawing is issued in confidence for engineering information only and may not be reproduced or used to manufacture anything shown hereon without permission from THE TECHNICAL MATERIEL CORPORATION to the user. This drawing is loaned for mutual assistance and is subject to recall at any time.

Property of:

THE TECHNICAL MATERIEL CORPORATION  
MAMARONECK, NEW YORK

TE-101-2 3 REQ.  
7/32 (.218) D. MTG. HOLE  
(HELDOR No. 312-A)

REF: HELDOR MFG. CO CAT # 108 FB MODIFIED

ISSUE	ITEM	CHANGED FROM	DATE	CN. NO.	DRAFTS	CHECKER	ENG. APP.
D	1	O/A DIM. CHGD FROM 2.012 X 2.240 TO 2-1/16 X 2-5/16 ACC. TO MIL-T-27A	1/6/58	4	16	JAL	AM
C	1	FINISH WAS ELECTRO TIN	8/3/57	3	ESD	JAL	JAL
B	1	STAMPING OF TR... NO DELETED	9/10/57	2	ESD	JAL	AMP
A	1	DIM. OF MTG. HOLE ADD.	1/3/55	1	P.B.	JAL	JAL

TOLERANCES		SCALE:	
ALL DIMS	DEC. DIM. ±	DRILL, PUNCH, COMMERCIAL STOCK SIZES AND MANUFACTURERS TOLERANCES ARE NOT INCLUDED.	
	FRAC. DIM. ±		
	ANGULAR DIM. ±		

REQ.	ITEM	PART NO.	DESCRIPTION	SYMBOL
		.019 - .025	THE TECHNICAL MATERIEL CORP.	
		STEEL	MAMARONECK. NEW YORK	
		MATERIAL	CASE, TRANSFORMER	
		WEIGHT PER PC.		
		TYPE & TEMPER	JAL	AMP
		HEAT TREAT. SPEC.	ESD	AMP
		FINISH & SPEC. NO.	CHECKED	FINAL APPROVAL
				BX-120 D

MODEL	TR. NO.	ASS'Y. NO.	DATE

USED ON